

# Customer Newsletter

**INSIDE THIS ISSUE:**

## UPDATE ON REGIONAL SOLID WASTE PLANNING

**Regional joint-county solid waste planning is set to begin this month.** The primary purposes of a solid waste plan are to:

1. *Ensure sufficient processing and disposal capacity for at least **10 years**.*
2. *Ensure a full, fair and **open discussion** of alternative methods of processing or disposal.*
3. *Ensure maximum feasible waste reduction and recycling.*

After a competitive bid process, a consulting team is in place and ready to begin preparation of the plan. The counties involved in the plan are Lycoming, Columbia, Montour, Snyder, and Union counties. The deadline for submission is January 7, 2012.

**Public representation** in the form of a planning committee is required as a part of the process. The committee will be made up of representatives from each of five stakeholder groups. There will be a

stakeholder group representing: municipalities, citizens, business and industry, private haulers, recycling industry. Each stakeholder group will be comprised of a minimum of 4 representatives from each of the participating counties.

### Stakeholder groups are forming now

To take advantage of **the opportunity to have your voice heard** regarding how waste will be managed in this region for the next 10 years, contact your local county Planning Representative:

**Columbia County:** (570) 389-9146

Bob Aungst ([raungst@columbiapa.org](mailto:raungst@columbiapa.org))

**Lycoming County:** (570) 320-2130

Kevin McJunkin ([kmcjunkin@lyco.org](mailto:kmcjunkin@lyco.org))

**Montour County:** (570) 271-3028

Betsy Hack ([mhsbhack@montourco.org](mailto:mhsbhack@montourco.org))

**Snyder County:** (570) 837-4257

Gwen Jones or Debbie Wolf

**Union County:** (570) 524-3840

Shawn McLaughlin or Bob Huntington

([smclaughlin@unionco.org](mailto:smclaughlin@unionco.org))

([rhuntington@unionco.org](mailto:rhuntington@unionco.org))

Traffic patterns during scale replacement construction 2

Repairs Planned at Transfer Station 2



[www.lcrms.com](http://www.lcrms.com)



Commissioners:  
**REBECCA A. BURKE**  
*Chairperson*  
**ERNEST P. LARSON**  
*Vice-Chairman*  
**JEFF C. WHEELAND**  
*Secretary*

[www.lyco.org](http://www.lyco.org)

### 2010 HOLIDAY SCHEDULE

(LANDFILL CLOSED)

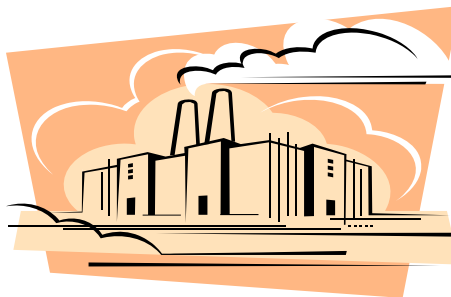
- ◆ *Memorial Day:*  
Monday, May 31, 2010
- ◆ *Independence Day:*  
Monday, July 5, 2010
- ◆ *Labor Day, Monday,*  
September 6, 2010
- ◆ *Thanksgiving:*  
Thursday, November 25, 2010
- ◆ *Christmas: Saturday,*  
December 25, 2010

## TRASH TO ENERGY TAX CREDITS

We have received several calls from customers asking questions about tax credits for disposing of their trash at a waste-to-energy (WTE) plant. We have researched this subject and while tax credits for the production of renewable energy from geothermal, solar, wind and biomass sources (WTE, as well as land-fill gas-to-energy, are included in the biomass category) are provided, we can find no information that a similar type of tax credit is available to the waste generator who uses a WTE plant for disposal.

The added cost of disposal at a WTE plant may be acceptable as a part of a "Zero Landfill" corporate initiative, but it won't reduce the waste generator's taxes.

We hope this answers your questions and facilitates your disposal option decisions.



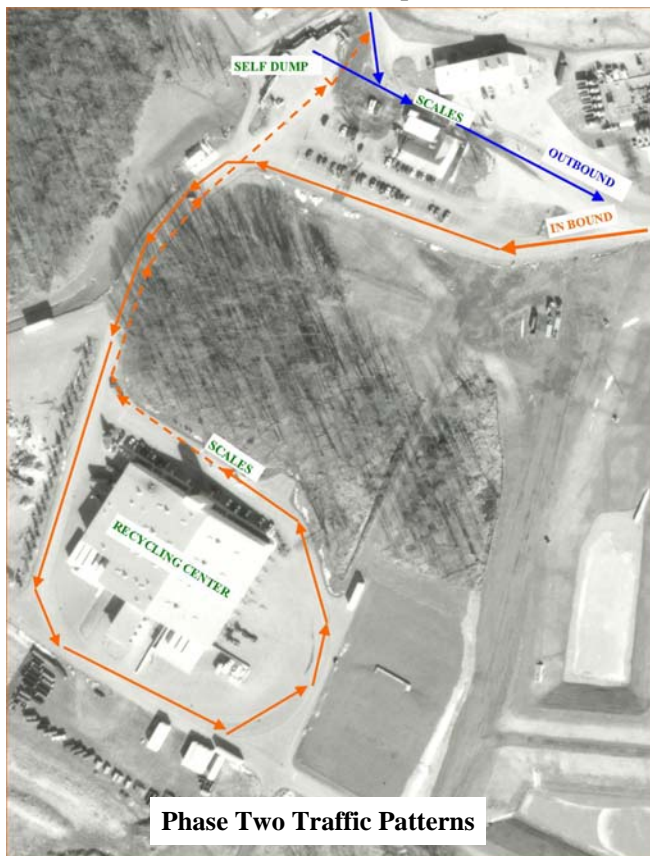
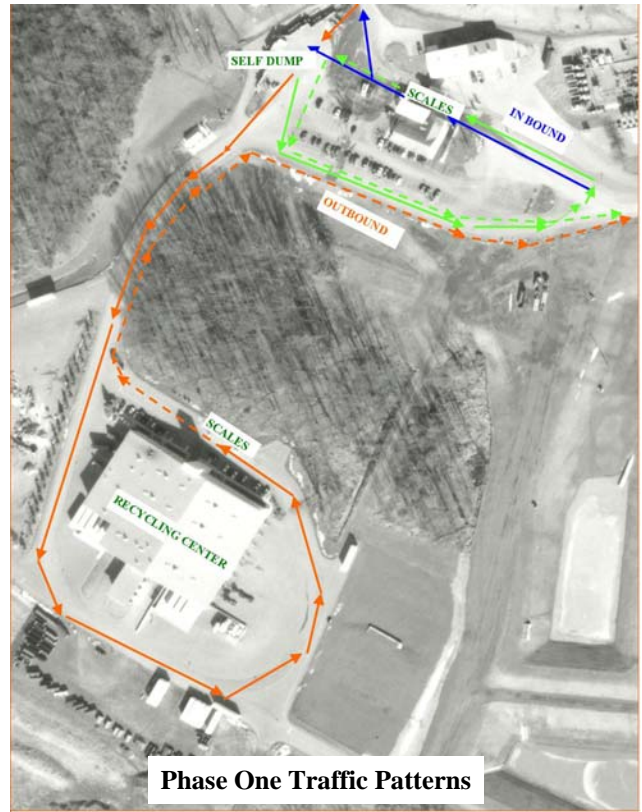
### LANDFILL TRAFFIC PATTERNS DURING CONSTRUCTION

Work will begin on May 17, 2010 on a two-phase construction project that will affect in-bound and out-bound traffic patterns at the landfill.

**PHASE ONE:** replacement of the outbound scale at the main scale house. The work is scheduled to be complete by the end of June. During this portion of the project, all vehicles will weigh in as usual. For outbound weights, all stickered vehicles will be directed to the scale at the Recycling Center. A temporary scale house will be located there to facilitate transactions. Vehicles without landfill stickers will be directed around the

Administration Building to weigh out on the inbound scale. All Saturday transactions will use the Landfill Scale. Traffic patterns are diagrammed on the photo at the right.

**PHASE TWO:** replace the asphalt approach to the inbound scale with concrete. This work will begin July 12, 2010 and will take approximately 2 weeks. During this project **all** vehicles will be directed to the scales at the Recycling Center for inbound weights. Outbound weights will be taken on the outbound scale at the main scale house. Traffic patterns for this phase of the work are diagrammed on the photo below.



#### REPAIRS PLANNED AT TRANSFER STATION

The small concrete channel at the end of the tipping floor that collects storm water and drips from trucks is in need of repair. Plans for the job are currently being developed with minimal inconvenience to our customers. In the best case, the project will be completed in sections so that access into the building will be restricted to three lanes occasionally over six weeks. The worst case will require closing the transfer station for a maximum of two days. If the fast curing concrete is available on the weekend, the job will be completed with no disruption to service.

Timing will be coordinated with the upcoming construction at the landfill (see page 2). **Information will be posted once scheduling is finalized.**

#### MEMORIAL DAY HOLIDAY

The Landfill and the Transfer Station will be closed on Monday, May 31, 2010 for the Memorial Day Holiday. For your convenience, the Landfill will open on Tuesday, June 1st at 6:00 AM; the Transfer Station will open at 7:30 AM.

