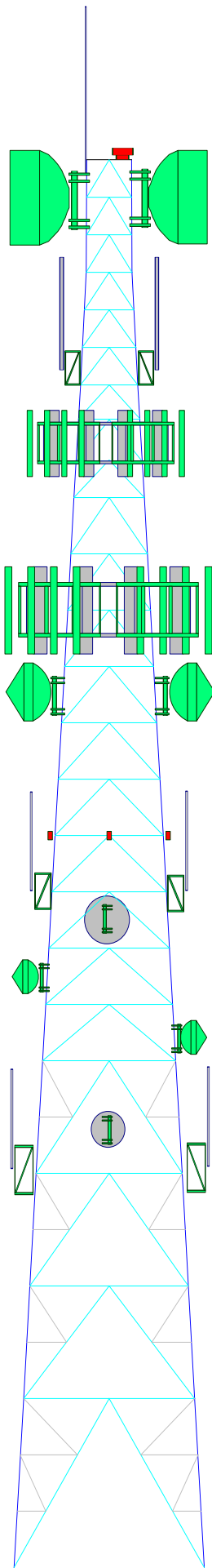


250.0 ft
230.0 ft
210.0 ft
190.0 ft
170.0 ft
150.0 ft
130.0 ft
110.0 ft
90.0 ft
70.0 ft
50.0 ft
30.0 ft
0.0 ft



DESIGNED APPURTENANCE LOADING

TYPE	ELEV	COAX	TYPE	ELEV	COAX
5/8"x 18' Lightning Rod	250		6' - 6GHz High Performance dish	112	EW63 2.5" oval
L-865/L864 LED FAA Beacon	250	3/4" mc cable	4" heavy duty pipe mount	112	
10' - 6GHz High Performance dish	240	EW63 3.5" oval	4' - 6GHz High Performance dish	107	EW63 2.5" oval
4" heavy duty pipe mount	240		4" heavy duty pipe mount	107	
10' - 6GHz High Performance dish	240	EW63 3.5" oval	4' - 11GHz High Performance dish	92	EW90 1.5" oval
4" heavy duty pipe mount	240		4" heavy duty pipe mount	92	
18" SC439 or equiv. omni whip	212	LDF6-50A 1 1/4"	4' - 11GHz High Performance dish	75	EW90 1.5" oval
MTS 24" Stand off Bracket	212		4" heavy duty pipe mount	75	
18" SC439 or equiv. omni whip	212	LDF6-50A 1 1/4"	20' PD-220 or equiv. omni whip	70	LDF5-50A 7/8"
MTS 24" Stand off Bracket	212		3' Stand Off Mount	70	
Pirod 12' T-Frame Sector Mount (3)	200		20' PD-220 or equiv. omni whip	70	LDF5-50A 7/8"
12 - 6' x 1' panel antennas	200	12 LDF7-50A 1-3/8"	3' Stand Off Mount	70	
Pirod 12' T-Frame Sector Mount (3)	170				
12 - 8' x 1.5' panel antennas	170	12 LDF7-50A 1-3/8"			
6' - 6GHz High Performance dish	155	EW63 2.5" oval			
4" heavy duty pipe mount	155				
6' - 6GHz High Performance dish	155	EW63 2.5" oval			
4" heavy duty pipe mount	155				
20' PD-220 or equiv. omni whip	118	LDF5-50A 7/8"			
3' Stand Off Mount	118				
20' PD-220 or equiv. omni whip	118	LDF5-50A 7/8"			
3' Stand Off Mount	118				

TOWER DESIGN NOTES

1. Tower is located in Lycoming County, Pennsylvania.
2. Tower designed for appropriate exposure category to the TIA-222-H Standard.
3. Tower designed for proper topographic category and crest height for the TIA-222-H Standard.
4. Tower designed for basic wind in accordance with the TIA-222-H Standard.
5. Tower designed for basic wind and ice loading in accordance with the TIA-222-H Standard.
6. Deflections are based upon a 60 mph wind.
7. Tower Risk Category III.
8. TOWER DESIGNED TO BE AT LESS THAN 75% CAPACITY WITH PROPOSED LOADING

Job: Hughesville 250' SS Tower		
Project: Lycoming County Tower Mapping - Design loading		
Code: TIA-222-H	Date: 11/16/2020	Scale: NTS
Coordinates: 41-15-15.65N 76-43-15.65W elev. 1002ft		