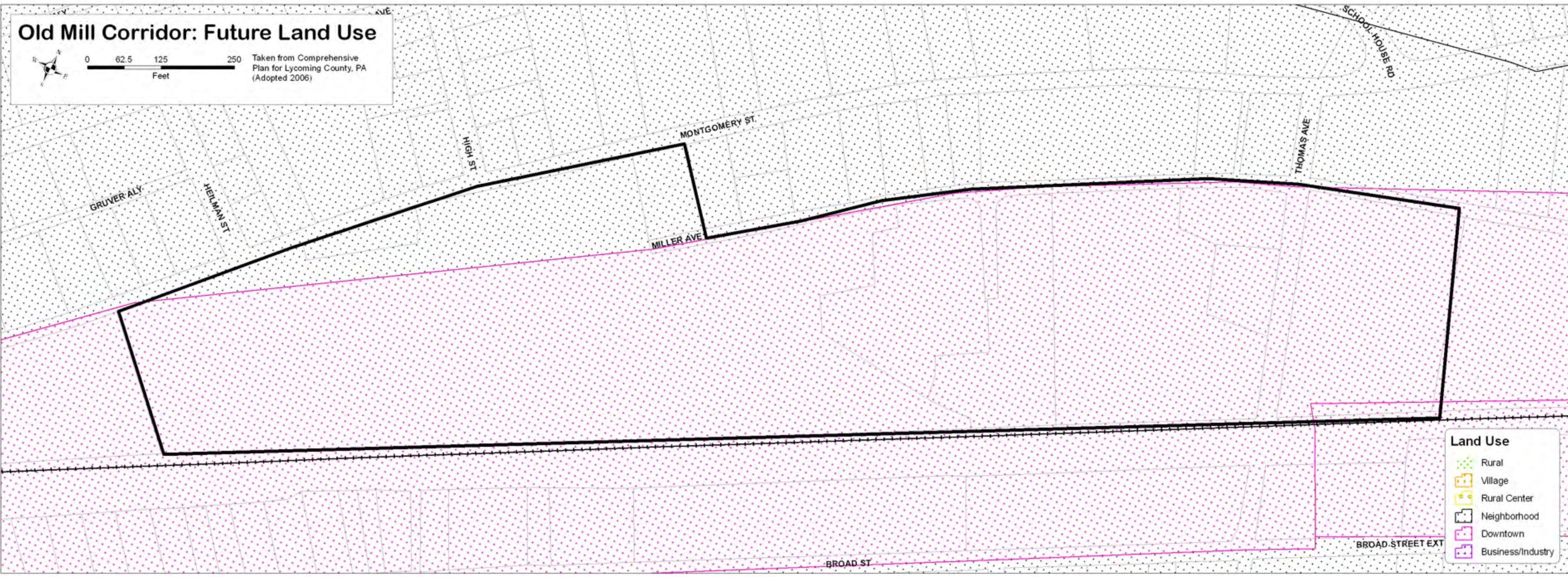


Old Mill Corridor: Future Land Use



0 62.5 125 250
Feet

Taken from Comprehensive
Plan for Lycoming County, PA
(Adopted 2006)



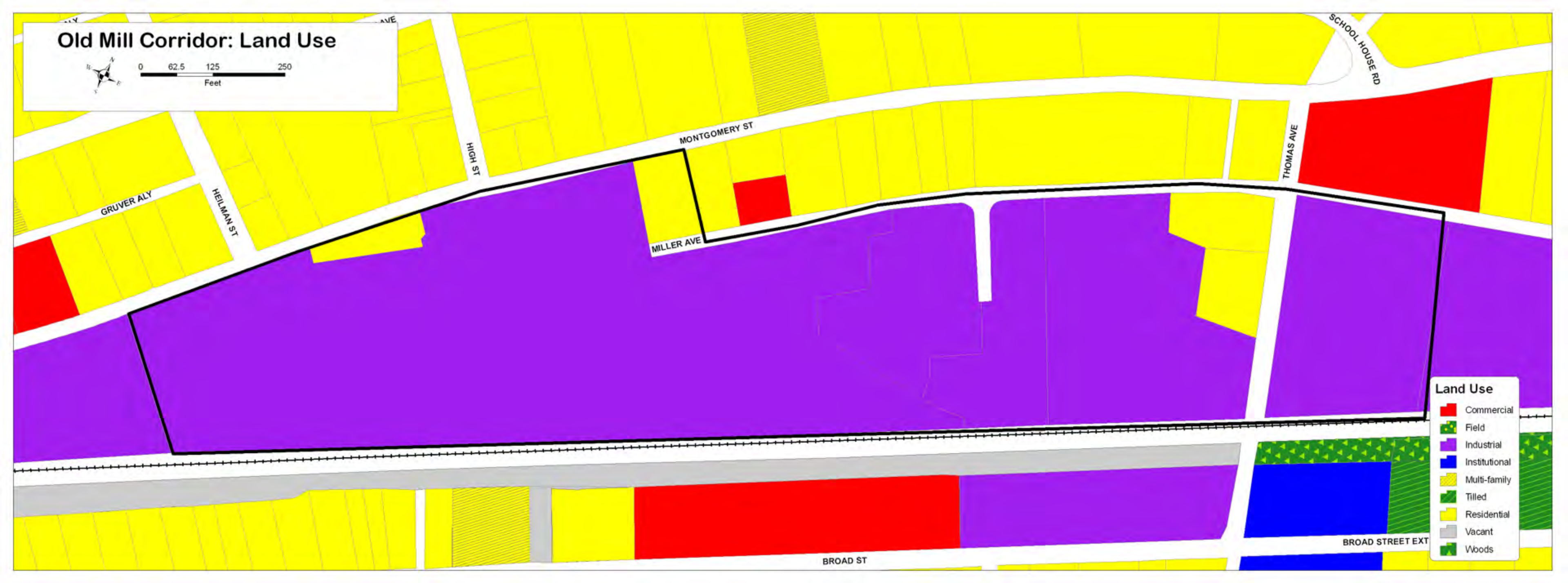
Land Use

- Rural
- Village
- Rural Center
- Neighborhood
- Downtown
- Business/Industry

Old Mill Corridor: Land Use



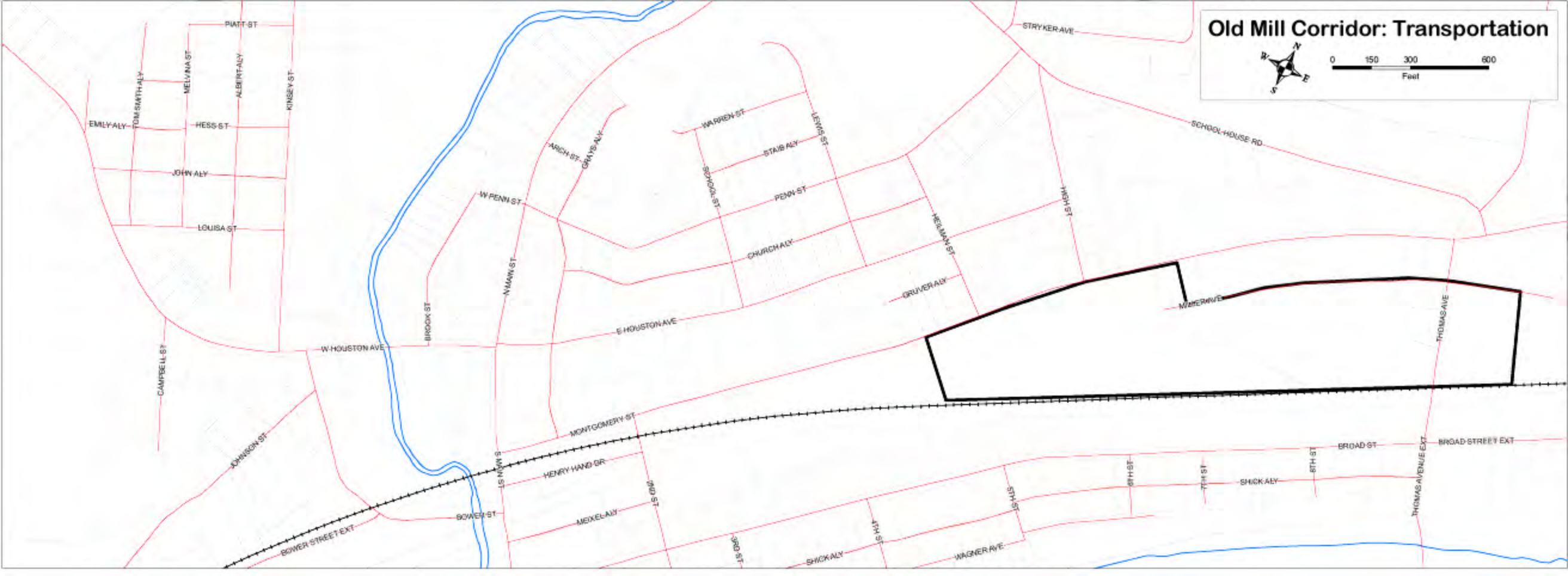
0 62.5 125 250
Feet



Land Use

- Commercial
- Field
- Industrial
- Institutional
- Multi-family
- Tilled
- Residential
- Vacant
- Woods

Old Mill Corridor: Transportation



Map showing the Old Mill Corridor (highlighted in black) and surrounding streets. The corridor runs from the intersection of W Houston Ave and E Houston Ave in the west, eastward along E Houston Ave, then north along Montgomery St, and east along Broad St and Broad Street Ext. A dashed line runs parallel to the corridor in the southern part of the map.

Streets shown include:

- W Penn St
- W Houston Ave
- E Houston Ave
- Montgomery St
- Broad St
- Broad Street Ext
- Warren St
- Stair Aly
- Penn St
- Church Aly
- Gruber Aly
- Lehigh
- Thomas Ave
- Johnson St
- Henry Hand Dr
- Mexel Aly
- Shick Aly
- Wagner Ave
- Emily Aly
- Hess St
- John Aly
- Louisa St
- Brook St
- N Main St
- Arch St
- Grays Aly
- School St
- Belmont St
- Gruber Aly
- Lehigh
- Johnson St
- Henry Hand Dr
- Mexel Aly
- Shick Aly
- Wagner Ave
- Emily Aly
- Hess St
- John Aly
- Louisa St
- Brook St
- N Main St
- Arch St
- Grays Aly
- School St
- Belmont St
- Gruber Aly
- Lehigh
- Johnson St
- Henry Hand Dr
- Mexel Aly
- Shick Aly
- Wagner Ave

Old Mill Corridor: Zoning



RESIDENTIAL

RESIDENTIAL

COMMERCIAL

RESIDENTIAL-SINGLE FAMILY

INDUSTRIAL

RESIDENTIAL-SINGLE FAMILY

RESIDENTIAL-HIGH DENSITY

