

LYCOMING COUNTY CLEAN WATER PLAN NEWSLETTER

July, 2021

Park Complex

Archaeological
Excavation

Corridor

Habitat
Restoration



BMP Showcase: Rotational Grazing

Rotational grazing generally means dividing a pasture into sub-pastures, or “paddocks”.

The basic premise with rotational grazing is that it will allow the pasture plants a rest period to regrow before being grazed again.

Other advantages include: placing livestock on a more even plane of nutrition as compared to continuous grazing; more drought resistance in the pasture; more total pounds of dry matter produced in a season compared to continuous grazing; and a more stable pasture botanical composition.

Learn more from Penn State Extension [here!](#)

Lycoming Co. Conserva- tion Dist. 65th Anniversary

In 2021, the Conservation District of Lycoming County acknowledges a 65-year history of serving Lycoming County. The District, also known as the Lycoming County Soil & Water Conservation, was established on July 20, 1956. The District was created to coordinate all soil conservation efforts, making possible local watershed protection, give farmers and land owners federal support in planning and executing soil improvements.

The District continues to provide the following programs: Watershed Management, Dirt & Gravel Roads for townships, Nutrient Management & ACT Program, Chesapeake Bay Program, Vector Borne Disease Control Program, No-till Drill Rental, Ag Land Preservation, Erosion & Sedimentation Control and Education & Outreach. It is our privilege and honor serving Lycoming County in the past, present and future.

The mission of the Conservation District is to encourage using Best Management Practices to conserve the natural resources essential to the quality of life for the county's citizens, through development and implementation of technical, educational and financial assistance programs.

Learn more on their website [here](#), and check out these [1956 newspaper articles](#) about the District!

CAP News

1. We did MUCH better in our latest CAST run. We're up to 41% N (up 925% from 4%), 71% P (up 1,083% from 6%). To achieve these results, we changed our reporting strategy to include more detailed BMPs.

2. Based on a recent meeting with DEP, we learned that we CAN include MS4 projects in our CAP, which is great news! This means we can incorporate MS4 projects in our BMP template for future CAST runs, and we can include recommendations to the State for additional resources for MS4 initiatives.

3. We'll be eligible for block implementation grant money for projects ready in the next 12-24 months starting in October. Stay tuned at lyco.org/CWAP!

Testimonies

It's a way to take action and move new and existing efforts forward

"I think of the CAP as a structure through which we ensure that all of our local partners are getting credit for projects that they're already doing. The CAP can help identify natural partners and act as an amplifier for support—attracting resources and leading to the greatest results possible. If we're going to succeed, we have to get out there and make sure everything's being counted and verified. Practices only count if they're counted, and the CAP helps make sure conservation practices are getting attention."

-Elizabeth Grant, Cumberland County Planning Department

Announcements

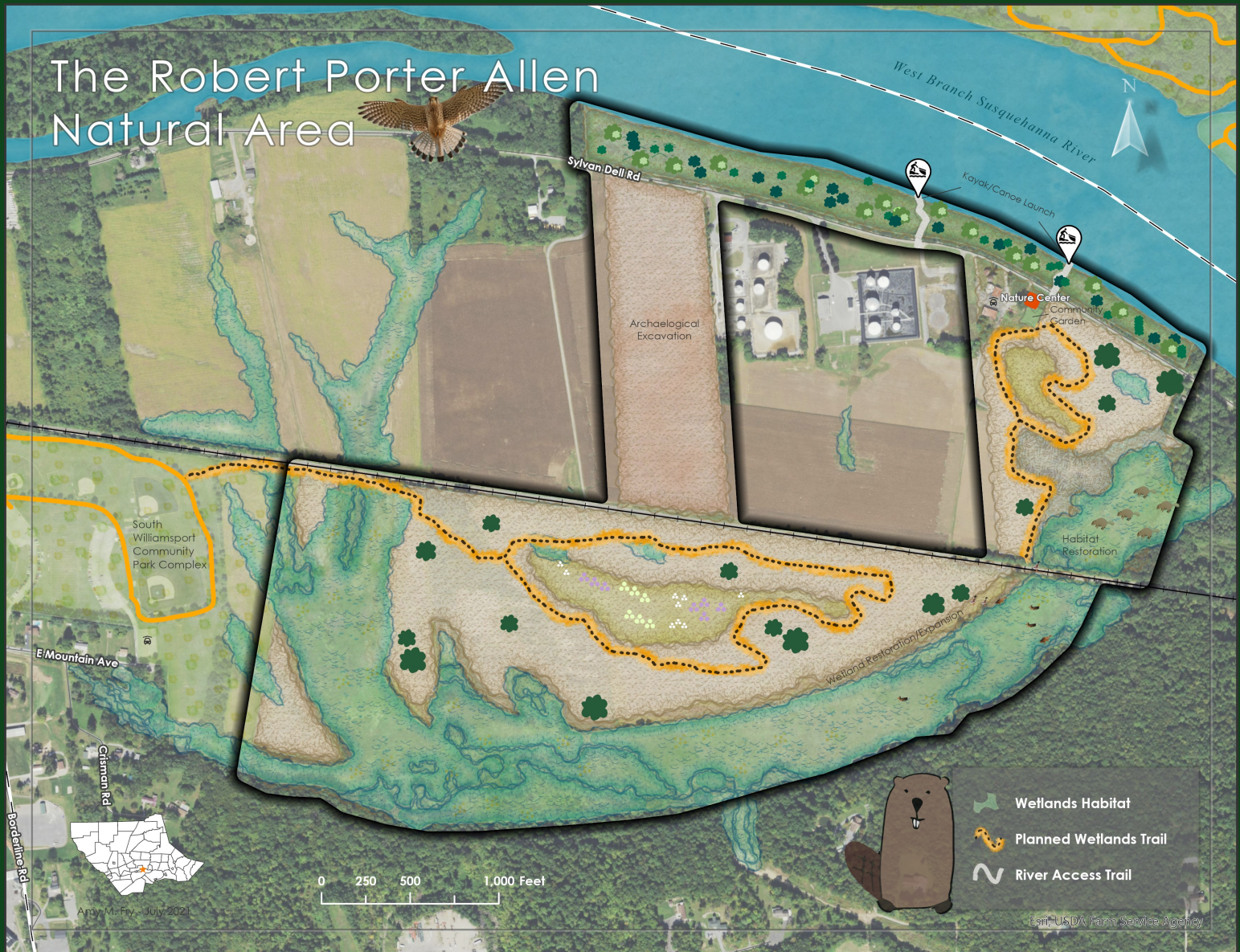
-We're coming into our last 2 months of our CAP's planning phase, and will move into our implementation phase in October. Here is a roadmap of our final planning phase milestones:

- 8/9—3rd BMP submission
- 8/23—DEP CAP review meeting
- 9/13—Final BMP template submission
- 9/28—Announce CAP finalization at Commissioners' public meeting
- 9/30—Final CAP submission to DEP

Visit lyco.org/CWAP for more updates and information!



Cartographer's Notes



About the Map

The Robert Porter Allen Natural Area

South Williamsport native, Robert Porter Allen (1905-1963), was at one time one of the country's leading naturalists, serving as president of the National Audubon Society. His childhood experience birding at Sylvan Dell influenced his career in ornithology. The natural area memorializing Allen will be located on a 227 acre farmstead, and will include a nature park, enhanced wildlife habitat, and improved access to nature for residents and visitors. The site contains river frontage, riparian forests, farmland, and the largest remaining floodplain wetland along the West Branch Susquehanna River. Future plans include the restoration and expansion of wetland, establishment of oak savanna grasslands and enhanced forested riparian buffers, walking and biking trails, canoe/kayak river access, and demonstration gardens. Read the July 21st Webb Weekly article about this project [here!](#) -Amy M. Fry

Coordinator's Notes

We're moving in a positive direction, and it's all thanks to our dedicated stakeholders and partners; a special shout-out in thanks to the Lycoming County Conservation District staff for their ongoing engagement and commitment to this work! While we're wrapping up our CAP planning documents, our focus will be to

capture the needs of the community to ensure the plan is effective for years to come.

Eve Adrian, Lycoming County Natural Resource Planner
eadrian@lyco.org

