

LYCOMING COUNTY CLEAN WATER PLAN NEWSLETTER

April, 2021



BMP Showcase: Cover Crops

Whether it's a grass, a legume, or a brassica, cover crops can grant farmers enormous benefits. As you travel throughout Lycoming County you'll see vast fields of diverse cover cropping, and it's a smart strategy! Some advantages to cover cropping include building soil health, retaining nutrients, controlling erosion, and reduces hard-to-kill weeds. Farm fields will always be growing *something*, and with cover crops farmers can be in control over what that *something* is between growing seasons.



Clean Streams Fund Proposed for Water Cleanup

State Sen. Gene Yaw is working with Republican Senate colleagues to seek \$250 million of the state's allocation from the American Rescue Plan Act to establish a Clean Streams Fund.

Yaw said the plan could improve some 85,000 miles of rivers and other streams.

Allocations for specific streams would need to be worked out during the budget process and with legislative leaders.

American Rescue Plan Act money cannot be used to reduce taxes or fund government pension systems.

States can use the funding for only certain actions to mitigate the impacts of the pandemic on households, businesses, and government operations, or to make new investments in water, sewer or broadband infrastructure, Yaw noted.

The state's total allocation is expected to be \$7 billion and is only available through 2024.

"The investments made in rehabilitating and improving Pennsylvania's waterways provide tangible economic benefits to local communities, while enhancing recreational activities for anglers and boaters and preserving these valuable resources for future generations," state Sen. Dan Laughlin, R-Erie, said. "Pennsylvania is committed to protecting and restoring the natural beauty of our waterways and the Clean Streams Fund would provide a substantial boost to those efforts." - [Williamsport Sun Gazette, April 12, 2021](#)

CAP News

The first draft of Lycoming County's CAP has been submitted to DEP!

The listed projects will be entered into the Chesapeake Assessment Scenario Tool (CAST) Model, and we can expect to have estimated nutrient load reductions soon.

This is the first of three drafts that will be submitted to ensure Lycoming County stays on track to hit its pollution reduction targets.

Draft 2 will be due at the end of June, and draft 3 will be due at the end of July.

A final draft will be submitted to DEP September 30, 2021.

Peer Groups have been meeting regularly to solidify projects, identify resources and partnerships, and plan for future implementation strategies.

Testimonies

"Since writing our CAP we've become more aware of the funding that's available, because there's a lot of funding supporting water quality improvement efforts for the Chesapeake bay. We've spent time trying to tease out which ones are the right ones for York County to pursue, and work out all of the dynamics that go with making a successful application-- administering the funding and getting what you want at the end."

-Felicia Dell, Director, York County Planning Commission

Announcements

- The first press release announcing the CAP was released April 15. The release was also submitted to DEP for distribution.

- As decided by its members, the Resource Peer Group will be absorbed into other Peer Groups as planning efforts progress.

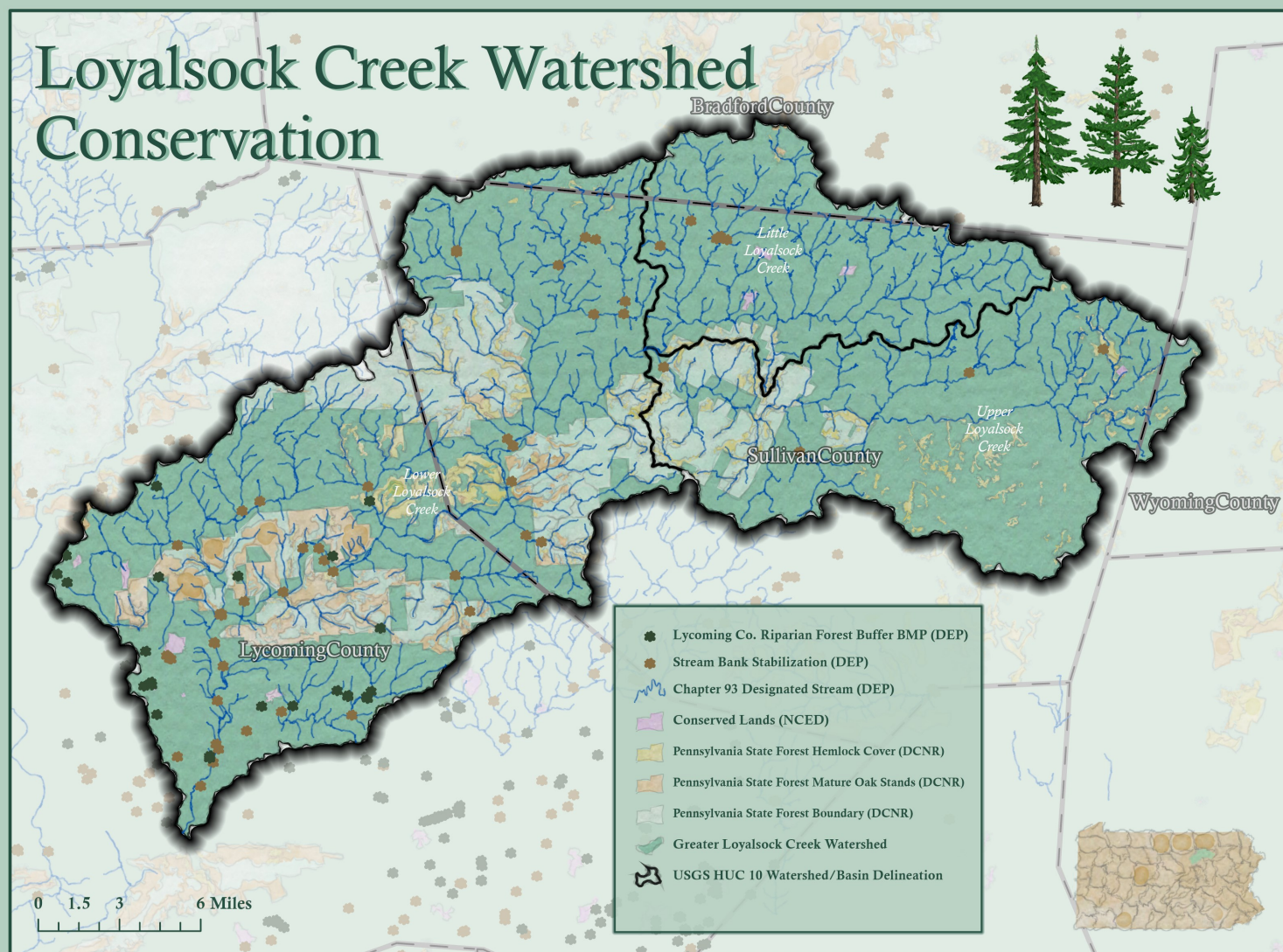
-Meetings will be on the Lyco Planning page calendar [here](#).

-Recordings, presentations, and notes from monthly stakeholder check-in meetings will be located [here](#).

Visit www.lyco.org/CWAP for more updates and information!



Cartographer's Notes



About the Map

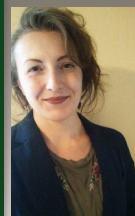
Loyalsock Creek Watershed Conservation

In the spirit of Earth Day (April 22) and Arbor Day (April 30), this month's map highlights conservation projects and arboreal environmental factors that contribute to water quality improvements in the Loyalsock Creek Watershed. Riparian forest buffers and stream bank stabilization projects both aid streams by providing erosion and runoff control. Quality streams come from quality tree cover and root systems, and the trees surrounding these pristine streams are especially important because they serve a specialized role in conserving the quality of the aquatic and riparian ecosystem in the watershed!

For more information on this map, please visit lyco.org/CWAP! -Amy M. Fry

Coordinator's Notes

Draft 1 - done! I'm eagerly awaiting the results of our CAP to see how much nutrient reduction we can achieve with the projects we have listed so far. Our projects are vast and diverse, and include lots of different partners. As we move further into our planning phase, I'm more and more excited about what we can accomplish in the future. *Thank you!!!*



Eve Adrian, Lycoming County Natural Resource Planner
eadrian@lyco.org