

LYCOMING COUNTY CLEAN WATER PLAN NEWSLETTER

March, 2021

BMP

Showcase:

Floodplain Restoration

Swatara Creek in Pine Grove, Schuylkill County is prone to flooding. Thanks to a project completed in 2020, the excess water from flood events is able to flow into a restored floodplain instead of nearly 180 homes nearby.

The project stretches over 10 acres of wetlands, and was put to the test in December, 2020 when heavy rains caused creeks and streams to rise. Thankfully, the newly-restored floodplain saved the town from what would previously have been a disaster.

To learn more about this success story, visit WNEP's article on the project [here](#). Or visit PA Homepage's article [here](#).

Sen. Yaw's fertilizer bill passes through committee

State Senator Gene Yaw's bill to establish best management practices for use of fertilizer to lawns and turf has been approved by the state Senate Agriculture and Rural Affairs Committee.

Yaw said the bill will certainly help in the fight to maintain clean water in the state as nutrient run-off from agricultural lands into waterways continues to be an issue.

The legislation will establish best management practices for the use of fertilizer; create a certification program for commercial and public applicators of fertilizer; promote homeowner and private agricultural fertilizer education through public outreach; enhance required labeling of all fertilizer products;

provide for the exemption of local laws and regulations; re-establish enhanced reporting requirements and provide a broad-based increase of fees, while repealing the separate classification for small package fees for inspections.

The certification process and other components of the bill, Yaw noted, will make it easier for best practices of fertilizer application to be regulated.—[Williamsport Sun](#)

[Gazette, March 26, 2021](#)

CAP News

Lycoming County is in the early stages of the planning phase of its clean water plan. Formally known as the Countywide Action Plan (CAP), this plan will contain diverse strategies to reduce pollution throughout the county.

The large stakeholder group has been split into seven Peer Groups—Agriculture, Resources, Watershed, Policy, Recreation, Municipal, and Implementation.

Initial meetings with the Peer Groups have begun, and will continue throughout the life of the project to discuss planning and implementation goals.

Larger monthly check-in meetings with stakeholders are recorded and can be reviewed at lyco.org/CWAP.

Testimonies

"Having a CAP has helped us be more prepared for grants before they come out. We know what the rolling grants are, and we know what projects we want to put on the ground, so we created a spreadsheet of landowners that have an interest in doing projects. The goal is to plan projects with them in advance so we can submit as soon as the grant RFP comes out."

—Caitlin Lucas, CAP Coordinator, Franklin County

Announcements

—The Ag Peer Group will be meeting twice per month in the evenings until further notice.

—The Implementation Peer Group will comprise of representatives from each Peer Group. Reps will be determined in future meetings.

—Meetings will be on the Lyco Planning page calendar [here](#).

—Recordings, presentations, and notes from monthly stakeholder check-in meetings will be located [here](#).

Visit www.lyco.org/CWAP for more updates and information!



Cartographer's Notes



Pennsylvania Fish and Boat Commission 2021 Trout Season



Numbered Fishing/Boating Access Locations

- | | | | |
|--------------------------------|---------------------------|--|---------------------------|
| 1 Clark Farm | 7 Rose Valley Lake | 13 Linden Access | 19 Torbert Canoe Access |
| 2 Black Walnut Bottom | 8 Jersey Shore Boat Club | 14 Montgomery | 20 Riverside Campground |
| 3 Hamilton Bottom | 9 Greevy | 15 CLOSED: Muncy UNSAFE WATER CONDITIONS | 21 Susquehanna Campground |
| 4 Little Pine Creek State Park | 10 Montoursville | 16 Gamble Run | 22 Bonnell Flats |
| 5 Rose Valley Lake | 11 West Branch Motor Club | 17 Ross Run | 23 Rattlesnake Rock |
| 6 Rose Valley Lake | 12 Susquehanna State Park | 18 Slate Run | 24 Susquehanna Boat Club |

Amy M. Fry
Lycoming County Planning & Community Development GIS

Earthstar Geographics, Airbus, USGS, NGA, NASA, CGIAR, NCEAS, NLS, OS, NMA, Geodatastyrelsen, GSA, GSI and
Data, PA Fish & Boat Commission, PASDA services
ESRI Cartographer John Nelson Imhof Design Style Project Template
the GIS User Community

About the Map

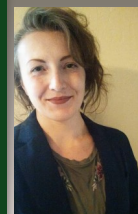
Pennsylvania Fish and Boat Commission 2021 Trout Season

Happy Fishmas! The PA Fish and Boat Commission (PFBC) is operating on a consolidated statewide schedule this year, and April 3rd is the opening day of Trout season in PA! To help in your quest for the perfect fishing spot, this map shows high-quality trout streams classified as Class A or Natural Reproduction Streams, and includes designated access areas (keep in mind that some access points may be located on private property).

This map also showcases an artistic style recently produced by ESRI cartographer John Nelson. It's designed to replicate the style of legendary Swiss cartographer Eduard Imhof, who specialized in hillshade relief. This mapping style is the result of aerial imagery overlaid with both a multi-directional color palette for topography and elevation data. For more information on this map, please visit lyco.org/CWAP! -Amy M. Fry

Coordinator's Notes

I have been so thankful for the overwhelming interest in this important initiative for clean water planning. The outpouring (no pun intended) of support and feedback has made it abundantly clear that this issue is on the minds of the people who live here in Lycoming County. Our work has just begun, and I look forward with optimism for what the future of this effort holds!



Eve Adrian, Lycoming County Natural Resource Planner
eadrian@lyco.org