

Montour County – Montour County provides assistance to its communities concerning recycling, composting and solid waste management whenever possible. However, it does not provide any County sponsored special programs or drop-off collections, although JAWS Recycling, Danville, does offer a drop-off for many recyclable items. (See section 6.1 for a more detailed description of the JAWS facility.) The Montour County communities of Danville and Mahoning Twp receive credit for the tonnage brought to the drop-off site on designated days, although anyone may use the facility during its hours of operation. The County recycling coordinator provides education to schools and community groups through a variety of programs and outreach programs.

Snyder County – Snyder County provides its residents with a number of County-sponsored drop-off recycling locations, as well as providing recycling education and a special event collection for “difficult-to-recycle” materials. There is one materials processing facility in the County (ABC Recycling, which is a scrap dealer), and the Snyder County Solid Waste Management Authority provides assistance to its municipalities to facilitate collection. Through a cooperative effort between Snyder County and its municipalities, Snyder County residents are given various options for the collection of recyclables. The majority of the County is served by the LCRMS, although McClure Borough works with Pheasant Valley Recycling, and Spring Township works with Cocolamus Creek Disposal.

There are 21 municipalities in Snyder County and only Selinsgrove Borough (with a population of 5,432 in 2009) is mandated to recycle. Selinsgrove provides curbside recycling, as well as composting services, to its residents. The majority of the County’s recycling is done through a system of drop-offs at various locations. There is limited recycling available in the western portion of the County, as the population density is sparse. McClure Borough and Spring Township have programs in place; however, many of the residents can drop off recyclables at more centrally located facilities.

There are 4 recycling drop-off locations operated as a cooperative effort between the municipalities and the Snyder County Solid Waste Management Authority (SWMA). These are located in Kreamer (Middlecreek Township), Middleburg/Franklin Township, Penn Township, and Port Trevorton (Chapman and Union Townships). They are hauled by the LCRMS at a nominal cost to Snyder County and its municipalities. There are also other drop-off centers located throughout the County which are not operated with SWMA assistance (beyond educational support for residents and municipal officials), including those in; Monroe Twp, Selinsgrove Boro, Spring Twp (in conjunction with Adams, West Beaver, and Beavertown Boro), Shamokin Dam, and at the Selinsgrove Center (a state facility which accepts various paper products for recycling).

There are various composting sites located in Snyder County, including sites operated by Penn Township, which will accept material from any County resident. Selinsgrove operates a composting site for the use of its residents, only. Two private landscapers allow residents to drop off brush and yard waste: Shaffer Landscapes Inc, (Middleburg Borough) and Hawk’s Landscaping and Nursery (Monroe Township). Mahlon Boop on Route 204 offers residents a site to drop-off brush and yard waste. As with recycling

5.21 Recycling Revenues and Fees

From the County perspective, revenue associated with recycling is dependent on how recycling is conducted, and by whom. For instance, within the Region:

- Columbia County has a vital recycling program run by the Town of Bloomsburg, and 2 private companies (Team Green Recycling and JAWS), but the County was forced to discontinue 13 municipal recycling programs when they experienced revenue shortfalls from the loss of the landfill administrative fee. Revenues in Bloomsburg are reinvested in solid waste management issues for the Town, but the County receives no revenue from recycling.
- Lycoming County has a complex solid waste management program led by the LCRMS, which includes a recycling MRF and a waste disposal landfill. The LCRMS provides recycling services throughout the County, but also services drop-off sites in Union and Snyder Counties. Revenues associated with recycling are combined with revenues generated by the landfill for use in helping offset recycling program operational costs and in supporting expanded general solid waste management services.
- Montour County relies primarily on a private solid waste company (JAWS) to address recycling needs throughout the County, although the County receives no revenue associated with these recycled materials.
- Snyder County relies primarily on the LCRMS for recycling drop-off collections, although some communities contract with private recycling companies. The County receives no revenue associated with these recycled materials. Due to a lack of revenue and funding, Snyder County was forced to close recycling programs in the western region, discontinued some special collections and educational programs, and cut back on staff time.
- Union County has several curbside collection programs, as well as numerous drop-off locations. All of the drop-off locations are serviced by the LCRMS, and the County receives no revenue from recycling.
- A local hauling company has recently introduced an optional single-stream recycling collection program as part of its subscription contract offering. This new opportunity may increase recycling in some portions of the Region, although the revenue associated with this program will be retained by the private hauler.

The value of recycled materials is difficult to estimate, given that: the commodity price changes continuously, some recyclable materials have little or no value, and that (as discussed above) the actual revenue is collected by private, municipal or county entities, depending on location. However, in order to show the magnitude of recycling value in the Region, the individual recycling commodity tonnages for the five-County Region were obtained for 2011, and using average prices per commodity type, a total value was computed. Based on these values, the total recycling tonnage for 2011 was estimated at roughly 11,819 tons of material. The average commodity price for all recycling streams was approximately \$100/ton, resulting in an estimated 2011 recycling value of \$1.18 million. (See Table B.17 in Appendix B.)

As noted above, this revenue was distributed across multiple private and public entities, and the costs associated with the collection and processing of the recycled materials is not readily

The LCRMS provides periodic informational newspaper ads and pamphlets indicating the types of material collected at the recycling facility, as well as information regarding upcoming special collection events. (See items B.10 and B.11 in Appendix B).

JAWS Recycling, Railroad Avenue, Danville, processes the majority of recyclables collected in Montour County's residences and businesses, and also processes materials from surrounding counties. The Center accepts a wide variety of items, including 3 colors of glass, #1 and #2 plastic bottles, aluminum and steel cans, newsprint and magazines, corrugated cardboard and chipboard, and various grades of office paper. They would like to expand collection to include electronics if resources are available.

JAWS also accepts materials at its recycling center site drop-off, on Thursdays, Fridays and Saturdays. Mahoning Township, in Montour County, gets credit for the tonnage on Thursdays and Fridays, while Danville Borough, Montour County, gets the credit from Saturday drop-off, although residents from other municipalities may bring material on those days. There are no mandated municipalities in Montour County although Danville Borough and Mahoning Township both have populations exceeding 4,000, and offer their residents curbside recycling. JAWS collects recyclables curbside once each month from these townships through a municipal contract. (Trash collection is supplied by subscription with individual haulers.)

JAWS processes material from a wide variety of locations, including Berwick Borough, in Columbia County, where the company also collects curbside recyclables through a municipal contract, and hauls material from the municipal drop-off. The recycling center processes recyclables from the Geisinger Medical Center, one of the Commonwealth's largest medical facilities, as well as from Valley Township, Montour County, which has its drop-off on the first Friday of every month at the Valley Township Fire Company. It also collects and processes material from Anthony Township whose drop-off is the third Wednesday each month at the township's municipal building. JAWS purchases various grades of plastics from other recyclers and bales the material at this location. It also collects some hard-back books, and bale plastic bags. It collects and bales material from many commercial establishments throughout the north-central region.

JAWS moved into its first building in 1989, and acquired the second building, located nearby, just ten years later. It accepts only source separated materials, although commercial accounts should contact them for guidelines. The JAWS Center is not at capacity and is able to accept and process more material, provided it meets their quality standards.

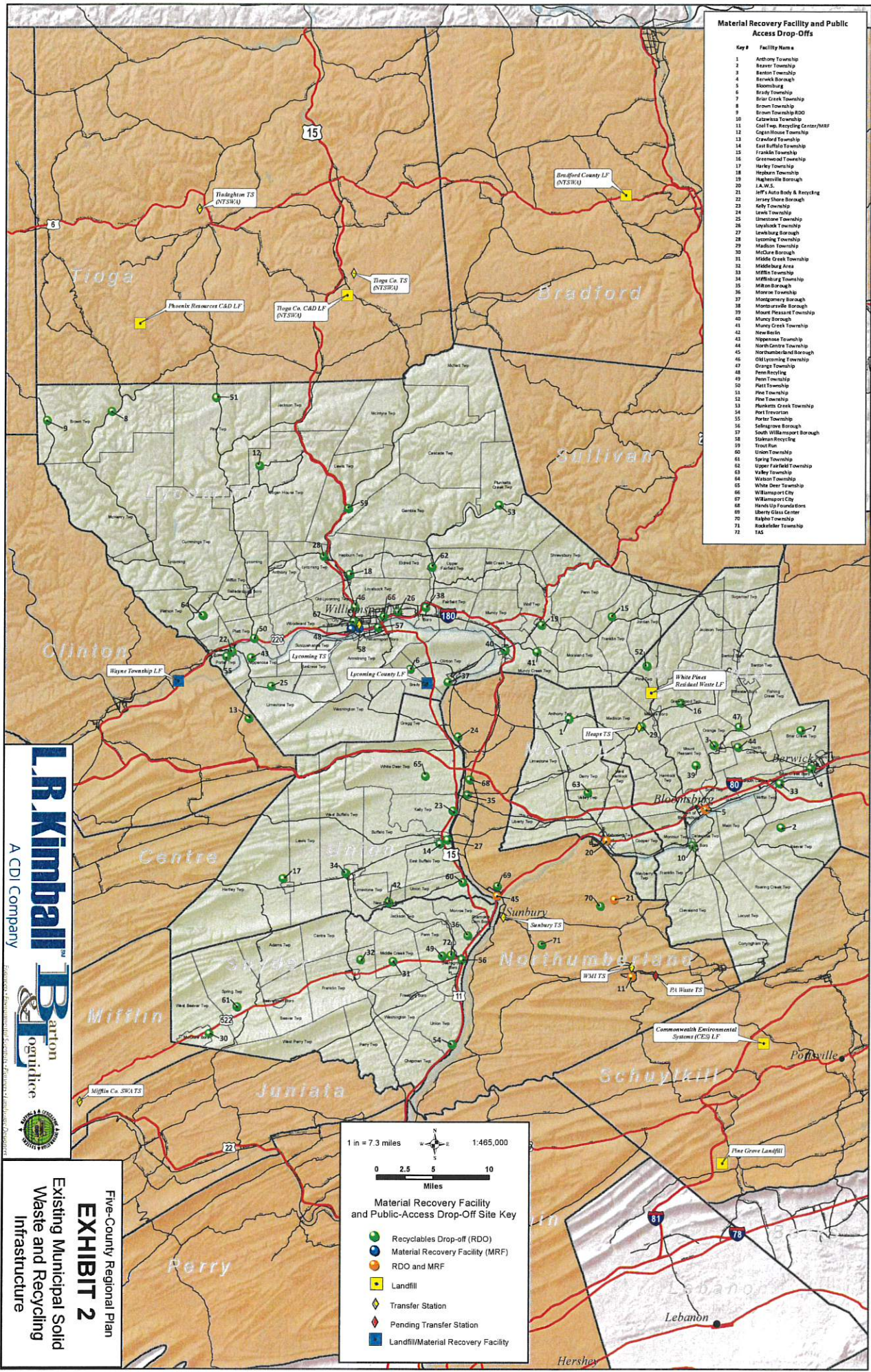
6.2 Solid Waste Disposal Facilities

Detailed discussions of the disposal facilities that have been used in the past 10 years are included in Section 5.1, and these facilities are geographically located on Exhibits 1 and 5.

B.3
Mountour County Municipal Recycling

| Municipality | Mandated or Not (Yes or No) | Residential Collection Method | Recycling Method | Composting Site (Yes or No) |
|----------------------|--------------------------------|-------------------------------|---|--------------------------------|
| Anthony Twp | No | Private subscription | drop-off site operated by JAWS | No |
| Cooper Twp | No | Private subscription | | No |
| Danville Boro | No* | Private subscription | Boro contract for curbside collection supplements with drop-off boxes | Yes |
| Derry Twp | No | Private subscription | | No |
| Liberty Twp | No | Private subscription | | No |
| Limestone Twp | No | Private subscription | | No |
| Mahoning Twp | No | Private subscription | Twp Contract for curbside collection supplemented by drop-off boxes | Yes |
| Mayberry Twp | No | Private subscription | | No |
| Valley Twp | No | Private subscription | drop-off site operated by JAWS | No |
| Washingtonville Boro | No | Private subscription | | No |
| West Hemlock Twp | No | Private subscription | | No |

* Note - Danville was mandated in 1990 but the current population has dropped below 5,000, although it is currently treated as Mandated



Material Recovery Facility and Public Access Drop-Offs

- | Key # | Facility Name |
|-------|--------------------------------|
| 1 | Andover Township |
| 2 | Beaver Township |
| 3 | Barton Township |
| 4 | Barwick Borough |
| 5 | Bloomburg |
| 6 | Brady Township |
| 7 | Butler Creek Township |
| 8 | Brown Township |
| 9 | Brown Township R/O |
| 10 | Catawissa Township |
| 11 | Coal Twp. Recycling Center/MRF |
| 12 | Cogan House Township |
| 13 | Crawford Township |
| 14 | East Buffalo Township |
| 15 | Franklin Township |
| 16 | Greenwood Township |
| 17 | Harley Township |
| 18 | Harpur Township |
| 19 | Hawthorne Borough |
| 20 | J.A.W.S. |
| 21 | Jeff's Auto Body & Recycling |
| 22 | Jervis Shore Borough |
| 23 | Kelly Township |
| 24 | Lewis Township |
| 25 | Liscomb Township |
| 26 | Loyalsock Township |
| 27 | Lehigh Valley Borough |
| 28 | Lyscoming Township |
| 29 | Madison Township |
| 30 | McClure Borough |
| 31 | Middle Creek Township |
| 32 | Middleburg Area |
| 33 | Mifflin Township |
| 34 | Mifflin Township |
| 35 | Milton Borough |
| 36 | Moore Township |
| 37 | Montgomery Borough |
| 38 | Montoursville Borough |
| 39 | Mount Pleasant Township |
| 40 | Muncy Borough |
| 41 | Muncy Creek Township |
| 42 | New Berlin |
| 43 | Nippenose Township |
| 44 | North Centre Township |
| 45 | Northumberland Borough |
| 46 | Old Lyscoming Township |
| 47 | Orange Township |
| 48 | Penn Township |
| 49 | Perry Township |
| 50 | Pott Township |
| 51 | Pine Township |
| 52 | Pine Township |
| 53 | Shickles Creek Township |
| 54 | Port Trevorton |
| 55 | Potters Township |
| 56 | Seligman Borough |
| 57 | South Williamsport Borough |
| 58 | Staten Recycling |
| 59 | Troun Run |
| 60 | Union Township |
| 61 | Spring Township |
| 62 | Upper Fairfield Township |
| 63 | Valley Township |
| 64 | Watson Township |
| 65 | White Deer Township |
| 66 | Williamsport City |
| 67 | Williamsport City |
| 68 | Windsor Township |
| 69 | Liberty Glass Center |
| 70 | Right Township |
| 71 | Rockville Township |
| 72 | TAS |

L.R. Kimball
A CDI Company
Barton
Logistics

Five-County Regional Plan
EXHIBIT 2
Existing Municipal Solid
Waste and Recycling
Infrastructure

1 in = 7.3 miles 1:465,000

0 2.5 5 10 Miles

Material Recovery Facility and Public-Access Drop-Off Site Key

- Recyclables Drop-off (RDO)
- Material Recovery Facility (MRF)
- RDO and MRF
- Landfill
- ◆ Transfer Station
- ◆ Pending Transfer Station
- Landfill/Material Recovery Facility

