

Mentions of
JAWS
Recycling
and drop off
sites in
Danville
Boro/
Mahoning
Twp
removed

Montour County – Montour County provides assistance to its communities concerning recycling, composting and solid waste management whenever possible. However, it does not provide any County sponsored special programs or drop-off collections. The County recycling coordinator provides education to schools and community groups through a variety of programs and outreach programs.

Snyder County – Snyder County provides its residents with a number of County-sponsored drop-off recycling locations, as well as providing recycling education and a special event collection for “difficult-to-recycle” materials. There is one materials processing facility in the County (ABC Recycling, which is a scrap dealer), and the Snyder County Solid Waste Management Authority provides assistance to its municipalities to facilitate collection. Through a cooperative effort between Snyder County and its municipalities, Snyder County residents are given various options for the collection of recyclables. The majority of the County is served by the LCRMS, although McClure Borough works with Pheasant Valley Recycling, and Spring Township works with Cocolamus Creek Disposal.

There are 21 municipalities in Snyder County and only Selinsgrove Borough (with a population of 5,432 in 2009) is mandated to recycle. Selinsgrove provides curbside recycling, as well as composting services, to its residents. The majority of the County’s recycling is done through a system of drop-offs at various locations. There is limited recycling available in the western portion of the County, as the population density is sparse. McClure Borough and Spring Township have programs in place; however, many of the residents can drop off recyclables at more centrally located facilities.

There are 4 recycling drop-off locations operated as a cooperative effort between the municipalities and the Snyder County Solid Waste Management Authority (SWMA). These are located in Kreamer (Middlecreek Township), Middleburg/Franklin Township, Penn Township, and Port Treverton (Chapman and Union Townships). They are hauled by the LCRMS at a nominal cost to Snyder County and its municipalities. There are also other drop-off centers located throughout the County which are not operated with SWMA assistance (beyond educational support for residents and municipal officials), including those in; Monroe Twp, Selinsgrove Boro, Spring Twp (in conjunction with Adams, West Beaver, and Beavertown Boro), Shamokin Dam, and at the Selinsgrove Center (a state facility which accepts various paper products for recycling).

There are various composting sites located in Snyder County, including sites operated by Penn Township, which will accept material from any County resident. Selinsgrove operates a composting site for the use of its residents, only. Two private landscapers allow residents to drop off brush and yard waste: Shaffer Landscapes Inc, (Middleburg Borough) and Hawk’s Landscaping and Nursery (Monroe Township). Mahlon Boop on Route 204 offers residents a site to drop-off brush and yard waste. As with recycling

5.21 Recycling Revenues and Fees

From the County perspective, revenue associated with recycling is dependent on how recycling is conducted, and by whom. For instance, within the Region:

- Columbia County has a vital recycling program run by the Town of Bloomsburg, and 1 private companies (Team Green Recycling), but the County was forced to discontinue 13 municipal recycling programs when they experienced revenue shortfalls from the loss of the landfill administrative fee. Revenues in Bloomsburg are reinvested in solid waste management issues for the Town, but the County receives no revenue from recycling.
- Lycoming County has a complex solid waste management program led by the LCRMS, which includes a recycling MRF and a waste disposal landfill. The LCRMS provides recycling services throughout the County, but also services drop-off sites in Union and Snyder Counties. Revenues associated with recycling are combined with revenues generated by the landfill for use in helping offset recycling program operational costs and in supporting expanded general solid waste management services.
- **Montour County** relies primarily on a private, per household recycling system. There are no mandated communities. However there are two communities where curbside pickup is available: Danville Borough and Mahoning Township.
- Snyder County relies primarily on the LCRMS for recycling drop-off collections, although some communities contract with private recycling companies. The County receives no revenue associated with these recycled materials. Due to a lack of revenue and funding, Snyder County was forced to close recycling programs in the western region, discontinued some special collections and educational programs, and cut back on staff time.
- Union County has several curbside collection programs, as well as numerous drop-off locations. All of the drop-off locations are serviced by the LCRMS, and the County receives no revenue from recycling.
- A local hauling company has recently introduced an optional single-stream recycling collection program as part of its subscription contract offering. This new opportunity may increase recycling in some portions of the Region, although the revenue associated with this program will be retained by the private hauler.

Replaced
mention of JAWS
Recycling with
curbside pickup
communities

The value of recycled materials is difficult to estimate, given that: the commodity price changes continuously, some recyclable materials have little or no value, and that (as discussed above) the actual revenue is collected by private, municipal or county entities, depending on location. However, in order to show the magnitude of recycling value in the Region, the individual recycling commodity tonnages for the five-County Region were obtained for 2011, and using average prices per commodity type, a total value was computed. Based on these values, the total recycling tonnage for 2011 was estimated at roughly 11,819 tons of material. The average commodity price for all recycling streams was approximately \$100/ton, resulting in an estimated 2011 recycling value of \$1.18 million. (See Table B.17 in Appendix B.)

As noted above, this revenue was distributed across multiple private and public entities, and the costs associated with the collection and processing of the recycled materials is not readily

The LCRMS provides periodic informational newspaper ads and pamphlets indicating the types of material collected at the recycling facility, as well as information regarding upcoming special collection events. (See items B.10 and B.11 in Appendix B).

A section regarding JAWS recycling was removed. Section 6.2 was moved up on page.

6.2 Solid Waste Disposal Facilities

Detailed discussions of the disposal facilities that have been used in the past 10 years are included in Section 5.1, and these facilities are geographically located on Exhibits 1 and 5.

The facilities that have been designated for inclusion in the Plan for the next 10 years are included in Sections 5.23 (disposal facilities) and 5.24 (transfer stations). Detailed discussions of the designated facilities are included in Appendix D, and the location of the facilities is shown on Exhibit 7.

Mountour County Municipal Recycling

Municipality	Mandated or Not (Yes or No)	Residential Collection Method	Recycling Method	Composting Site (Yes or No)
Anthony Twp	No	Private subscription		No
Cooper Twp	No	Private subscription		No
Danville Boro	No*	Private subscription	Boro contract for curbside collection	Yes
Derry Twp	No	Private subscription		No
Liberty Twp	No	Private subscription		No
Limestone Twp	No	Private subscription		No
Mahoning Twp	No	Private subscription	Twp Contract for curbside collection	Yes
Mayberry Twp	No	Private subscription		No
Valley Twp	No	Private subscription		No
Washingtonville Boro	No	Private subscription		No
West Hemlock Twp	No	Private subscription		No

* Note - Danville was mandated in 1990 but the current population has dropped below 5,000, although it is currently treated as Mandated

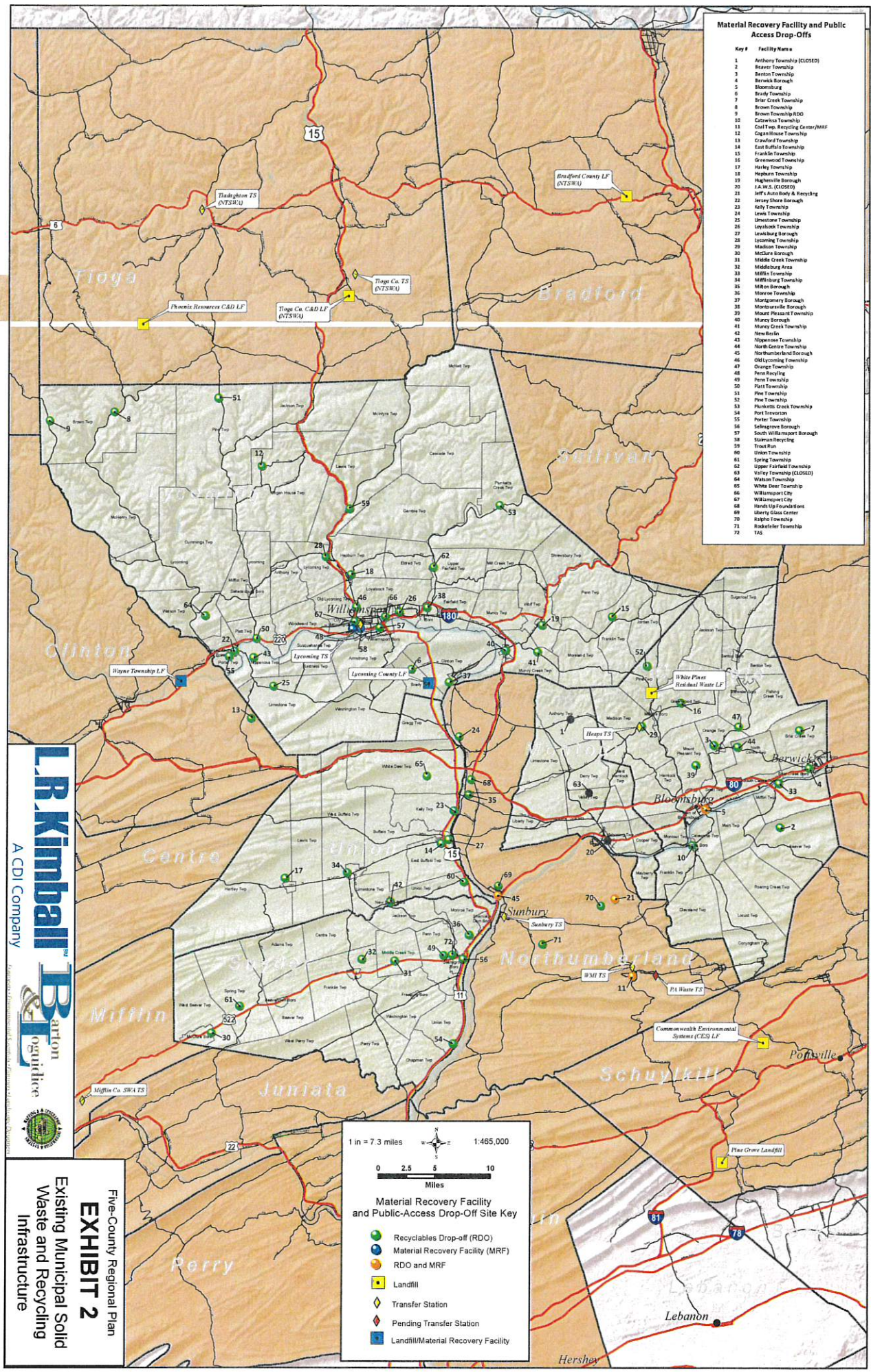
Revisions made to chart:

1. Anthony Twp drop off site removed
2. Removed mention of drop off boxes from Danville Boro and Mahoning Township
3. Valley Township drop off site removed

DROP OFF SITES IN MONTOUR COUNTY LABELED AS CLOSED

Material Recovery Facility and Public Access Drop-Offs

Key #	Facility Name
1	Anthony Township (CLOSED)
2	Beaver Township
3	Benton Township
4	Berwick Borough
5	Boonshurg
6	Brady Township
7	Star Creek Township
8	Brown Township
9	Brown Township RDO
10	Calverton Township
11	Coal Twp. Recycling Center/MRF
12	Cogan House Township
13	Crawford Township
14	East Buffalo Township
15	Franklin Township
16	Greenwood Township
17	Harley Township
18	Hughes Township
19	Hughesville Borough
20	J.A.W.S. (CLOSED)
21	Jeff's Auto Body & Recycling
22	Jersey Shore Borough
23	Kelly Township
24	Lewis Township
25	Limontown Township
26	Loyalsock Township
27	Lehighburg Borough
28	Lycium Township
29	Madison Township
30	McLean Borough
31	Middle Creek Township
32	Middleburg Area
33	Mifflin Township
34	Mifflin Township
35	Milton Borough
36	Misere Township
37	Montgomery Borough
38	Montoursville Borough
39	Mount Pleasant Township
40	Muncy Borough
41	Muncy Creek Township
42	New Britain
43	Nippenreth Township
44	North Centre Township
45	Northumberland Borough
46	Old Lycium Township
47	Orange Township
48	Parke Recycling
49	Perin Township
50	Pitt Township
51	Pine Township
52	Pine Township
53	Porter Township
54	Port Trevorton
55	Porter Township
56	Salisbury Borough
57	South Williamsport Borough
58	Stewart Township
59	Tread Run
60	Union Township
61	Spring Township
62	Upper Fairfield Township
63	Valley Township (CLOSED)
64	Watson Township
65	White Deer Township
66	Williamsport City
67	Williamsport City
68	Handley Hill Farmstead
69	Liberty Glass Center
70	Ralpho Township
71	Rushdaler Township
72	TAS



LR Kimball
A CDI Company
Barton
Logistics

Five-County Regional Plan
EXHIBIT 2
Existing Municipal Solid Waste and Recycling Infrastructure

1 in = 7.3 miles 1:465,000

0 2.5 5 10 Miles

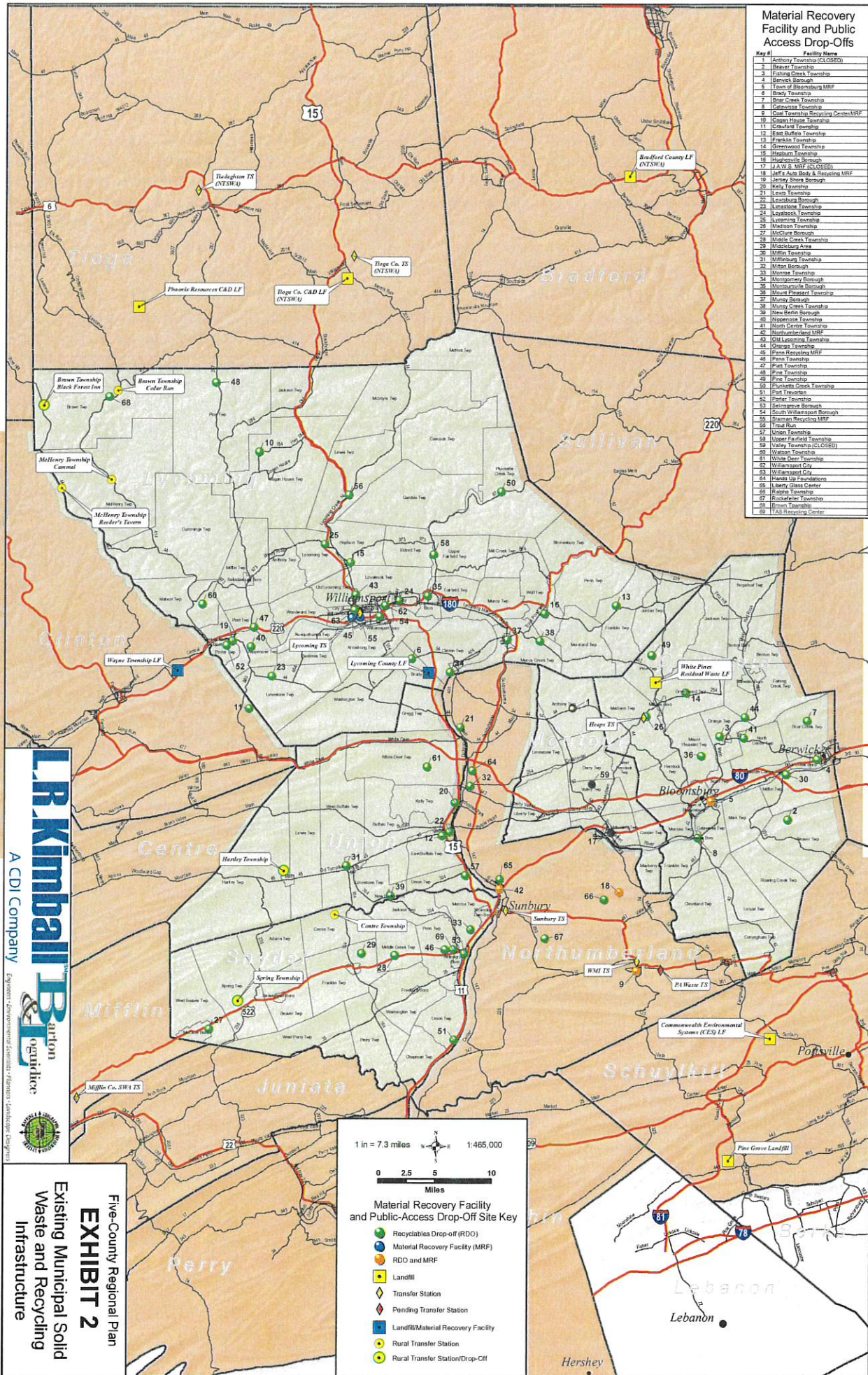
Material Recovery Facility and Public-Access Drop-Off Site Key

- Recyclables Drop-off (RDO)
- Material Recovery Facility (MRF)
- RDO and MRF
- Landfill
- ◆ Transfer Station
- ◆ Pending Transfer Station
- Landfill/Material Recovery Facility

**DROP OFF
SITES IN
MONTGOMERY
COUNTY
LABELED
AS CLOSED**

Material Recovery Facility and Public Access Drop-Offs

Key #	Facility Name
1	Anthony Township (CLOSED)
2	Barnet Township
3	Fishing Creek Township
4	Barnes Borough
5	East of Bloomsburg MRF
6	Bradley Township
7	Bear Creek Township
8	Colfax Township
9	Cole Township Recycling Center/MRF
10	Crook Mountain Township
11	Crawford Township
12	East Buffalo Township
13	Franklin Township
14	Greenwood Township
15	Hudson Township
16	Hughesville Borough
17	JAY'S MRF (CLOSED)
18	Jeff's Auto Body & Recycling MRF
19	Jerry Shore Borough
20	Kelly Township
21	Leola Township
22	Lebanon Borough
23	Limestone Township
24	Loudon Township
25	Lycoming Township
26	Madison Township
27	Madison Township
28	Madison Township
29	Madison Township
30	Madison Township
31	Madison Township
32	Madison Township
33	Madison Township
34	Madison Township
35	Madison Township
36	Madison Township
37	Madison Township
38	Madison Township
39	Madison Township
40	Madison Township
41	Madison Township
42	Madison Township
43	Madison Township
44	Madison Township
45	Madison Township
46	Madison Township
47	Madison Township
48	Madison Township
49	Madison Township
50	Madison Township
51	Madison Township
52	Madison Township
53	Madison Township
54	Madison Township
55	Madison Township
56	Madison Township
57	Madison Township
58	Madison Township
59	Madison Township
60	Madison Township
61	Madison Township
62	Madison Township
63	Madison Township
64	Madison Township
65	Madison Township
66	Madison Township
67	Madison Township
68	Madison Township
69	Madison Township
70	Madison Township



CR Kimball Barton
A CDI Company
Expert • Environmental Scientists • Planners • Landscape Designers

Five-County Regional Plan
EXHIBIT 2
Existing Municipal Solid Waste and Recycling Infrastructure

1 in = 7.3 miles
1:465,000

0 2.5 5 10
Miles

Material Recovery Facility and Public-Access Drop-Off Site Key

- Recyclables Drop-off (RDO)
- Material Recovery Facility (MRF)
- RDO and MRF
- Landfill
- ◆ Transfer Station
- ◆ Pending Transfer Station
- Landfill/Material Recovery Facility
- Rural Transfer Station
- Rural Transfer Station/Drop-Off