

Commissioners:

SCOTT L. METZGER
Chairman

TONY R. MUSSARE
Vice Chairman

RICHARD MIRABITO
Secretary



MATTHEW A. McDERMOTT
*Director of Administration
and Chief Clerk*

J. DAVID SMITH
Solicitor

Telephone (570) 320-2124
Fax (570) 320-2127

COUNTY of LYCOMING
48 WEST THIRD STREET
WILLIAMSPORT, PA 17701

www.lyco.org
county.commissioners@lyco.org

**LYCOMING COUNTY BOARD OF COMMISSIONERS
PUBLIC MEETING MINUTES
THURSDAY, MARCH 24, 2022
10:00 A.M.**

Present In-Person: Commissioner Metzger, Commissioner Mussare, Commissioner Mirabito, Director McDermott. J. David Smith, Solicitor (Via Telephone)

1.0 OPERATIONS

- 1.1 Opening Prayer
 - 1.2 Pledge of Allegiance
 - 1.3 Convene Commissioners' Public Meeting
 - 1.4 Approve the Minutes of the Previous Meeting
- Mr. Mirabito moved to approve. Mr. Mussare 2nd the motion. Approved 3-0.**
- 1.5 Public Comment on Agenda Items Only

2.0 REPORTS

- 2.1 Mya Toon (via telephone)– Acknowledge the list of contracts approved by the Director of Administration for the month of February.
Mr. Mirabito moved to approve. Mr. Mussare 2nd the motion. Approved 3-0.
- 2.2 Brandy Clemens – Vote to ratify accounts payable cash requirement report. For invoices due through 03/30/2022 paid on 03/24/2022 in the amount of \$371,465.51
Mr. Mirabito moved to approve. Mr. Mussare 2nd the motion. Approved 3-0.

3.0 INFORMATION ITEMS

- 3.1 Sydney Moore – Presentation on the Spotted Lantern Fly.
Pennsylvania Department of Agriculture
SEE ATTACHED

4.0 ACTION ITEMS

- 4.1 Matthew McDermott – Vote to appoint member to the following:
Lycoming County Zoning Hearing Board
Dan Clark: Alternate Member to Full Member
Term Start: March 24, 2022 Term End: December 31, 2025

Mr. Mirabito moved to approve. Mr. Mussare 2nd the motion. Approved 3-0.

- 4.2 Mya Toon – (via telephone) Vote to approve Memorandum of Understanding with West Branch Drug & Alcohol Commission (COVID -19 Disaster Relief Funds).

Mr. Mirabito moved to approve. Mr. Mussare 2nd the motion. Approved 3-0.

- 4.3 Mya Toon – (via telephone) Vote to approve Amendment to Memorandum of Understanding with Roads to Freedom Center for Independent Living of North Central PA (COVID -19 Disaster Relief funds).

Mr. Mirabito moved to approve. Mr. Mussare 2nd the motion. Approved 3-0.

- 4.4 Ken George – Vote to approve Amendment to Agreement with Air Management Technologies, Inc. (2022 budgeted item).

Mr. Mirabito moved to approve. Mr. Mussare 2nd the motion. Approved 3-0.

- 4.5 Jerry Kennedy – Vote to approve software and support renewal for the Assessment Office (2022 budgeted item).

Mr. Mirabito moved to approve. Mr. Mussare 2nd the motion. Approved 3-0.

- 4.6 Jason Yorks- Vote to approve the purchase of a 2022 John Deere Backhoe Loader (2022 budgeted item).

Mr. Mirabito moved to approve. Mr. Mussare 2nd the motion. Approved 3-0.

- 4.7 Kristin McLaughlin – (via telephone) Vote to approve FY 2020 CDBG-CV Budget Modification (CDBG-CV funds).

Mr. Mirabito moved to approve. Mr. Mussare 2nd the motion. Approved 3-0.

5.0 COMMISSIONER COMMENT

Mr. Metzger talked about our Job Fair, today. Attending the recent CCAP Conference Announced a Town Hall next week at 6 pm, do discuss ideas for funding and allocations.

Mr. Mussare commented about the recent loss of two state troopers, and all the other areas where they are being murdered. He spoke of a new training tool for the sheriff department that could also benefit all law enforcement departments. Spoke of a visiting the new director of CAC, and would like to discuss funding sources with them. Would like to see more minorities apply for county positions. Spoke of reassessment – there is no easy solution, but something needs to be done.

6.0 GENERAL PUBLIC COMMENT

Speakers who wish to address the Board of Commissioners will be limited for no more than three (3) minutes on any particular item. The speaker must state his/her name and address for the record. Any deviation from this rule must be approved by the Board Chairman.

Mark Sortman, Loyalsock Township

Inquired about funding for Community Arts Center, asking if their roof had been repaired. He hopes they reapply now for additional funding they sought prior to the repairs being made.

John Shireman, Jersey Shore

Wants the public to be vigilant with loved ones and friends who suffer from chronic heartburn or indigestion and urges them to be seen by a specialist and not to stop until someone figures out why – because stomach cancer is very hard to detect and has a low survival rate. He also inquired about the plans for Community Center in Jersey Shore and asked for clarification on the plan.

YouTube Live Public Comment(s):

Thomas Adams Good morning, we as a nation are under attack by global elites. I think we, as a Christian nation are under God's judgment and we must turn our hearts and minds to a repentance from all ungodly

T

Thomas Adams debauchery that we, the Christians have allowed to permeate all areas of our society and government

T

Thomas Adams because of our churches voluntarily stepping out of the political, governing and educational arenas. I am encouraging everyone to be aware of the push by the WHO for a global system of vaccine

J

Joie Dozpat I love the idea of more training for law enforcement of all types. Perhaps if it was a county wide training aide, the cost could be shared by more communities/departments. Thank you for all you do!!

7.0 NEXT SCHEDULED MEETING

The next Commissioners Public Meeting will be held on **Thursday, March 31, 2022**, at 10:00 A.M. in the Commissioner's Board Room, 1st Floor, Executive Plaza, 330 Pine Street, Williamsport, PA 17701.

To view a recording of this Public Meeting please go to:
<https://www.youtube.com/watch?v=gAg70IibgGs>

Agriculture Department Adds Eleven Counties To Spotted Lanternfly Quarantine

Addition Of Adams, Armstrong, Bedford, Centre, Fulton, Indiana, Lycoming, Mercer, Snyder, Union, And Washington Counties Bring Quarantine To 45 PA Counties

03/25/2022

Harrisburg, PA – As the invasive spotted lanternfly's spring hatch approaches, Agriculture Secretary Russell Redding announced today that the department has added 11 counties to Pennsylvania's quarantine zone. Adams, Armstrong, Bedford, Centre, Fulton, Indiana, Lycoming, Mercer, Snyder, Union, and Washington counties bring the total to [45 Pennsylvania counties quarantined](#).

"Spotted lanternflies threaten outdoor businesses and quality of life as well as grapes and other valuable crops Pennsylvania's economy depends on," Redding said. "It's up to every Pennsylvanian to be on the lookout for these bad bugs. Walk your yard, gardens, or land before spring hatch and scrape egg masses. Kill every bug. Check your vehicles before traveling to ensure you're not transporting them to a new area for new opportunities to devastate crops and outdoor quality of life."

Adult lanternflies do not survive the winter months. However last season's insects have laid eggs on any outdoor surface in [masses of 30-60 eggs](#) [Opens In A New Window](#), each covered with a mud- or putty-like protective coating. Finding and destroying egg masses now will prevent their hatch and reduce their spread this season.

In the seven seasons since lanternflies were first discovered in the U.S., research funded by the department, the USDA and private industry, has advanced our understanding of the insect and how to safely control it in our climate and habitat. To learn how to recognize the insect and its eggs, how to [separate common myths from facts](#) [Opens In A New Window](#), and how to safely control it on your property, visit Penn State Extension's website, extension.psu.edu/spotted-lanternfly [Opens In A New Window](#) or contact your local PSU Extension office.

Known lanternfly infestations are not widespread in the newly quarantined counties, but in scattered municipalities shown on the department's [detailed online map](#). When the department receives reports of lanternflies in new areas, inspectors confirm the presence of the insect, then survey the area to determine whether it was an isolated insect or a more extensive population. Working with property owners, inspectors treat areas that pose a high risk of spreading the insect, such as high-traffic businesses, tourist attractions and transport centers.


[The quarantine](#) strictly prohibits the movement of any spotted lanternfly living stage including egg masses, nymphs, and adults, and regulates the movement of articles that may harbor the insect.

Businesses that operate in or travel through quarantined counties are required to obtain a Spotted Lanternfly [permit](#). The permit is designed to educate business travelers -- regardless of their industry and whether or not they transport goods -- to recognize spotted lanternflies and know how to keep from giving them a ride to a new area. More than 20,000 [companies throughout the U.S. and Canada](#) have gotten permits, representing more than 1.2 million of their employees who are doing their part to stop the spread of the invasive insect.

For more information on spotted lanternflies, visit agriculture.pa.gov/spottedlanternfly. For more about how Governor Tom Wolf's historic PA Farm Bill invests in a vibrant, sustainable agriculture industry visit agriculture.pa.gov/pafarmbill.

Editor's note: High quality, public domain photos of spotted lanternflies are available for download through the U.S. Department of Agriculture's [Spotted Lanternfly Flickr albumOpens In A New Window](#).

MEDIA CONTACT: Shannon Powers, 717.603.2056, shpowers@pa.gov




Spotted Lanternfly Permit Training
Part 1: Invasion of the Spotted Lanternfly


1

Spotted Lanternfly

- Discovered in Berks County in September 2014
- Estimated arrival in PA: sometime in 2012
- Native to parts of Asia
- Recently introduced to South Korea



2




3



Feeds on sap from the trunks, stems, or leaves

Does not bite or sting people

4



Feeds in swarms

5



Excretes honeydew

6



Honeydew and Sooty Mold

7

Spotted Lanternfly

Feeds on more than 70 plants, including:

Grape	Apple	Peach	Black Walnut	Maple
Sycamore	Staghorn Sumac	Hops	Vegetables	Blueberry

8

What is at Risk for Pennsylvania?

- 5th largest producer of wine grapes
- 3rd largest producer of juice grapes
- 4th largest producer of apples
- 5th largest producer of peaches

Over 100 million dollars!

9

What is at Risk for Pennsylvania?

- #1 exporter of hardwoods (\$19 billion annually)
- 3rd largest state park system
- hops
- vegetables
- landscaping and nursery stock
- related services


10

Image Credits

Unless otherwise noted, all images are courtesy of Penn State
 1. Image courtesy of Bernard Butler
 2. Ken Coyle / Penn State
 3. © John Deere / Penn State
 4. Ken Coyle / Penn State
 5. © Penn State
 6. © Penn State
 7. "Spotted lanternfly and newly found an 'alien' by Scott Nelson on Flickr.com has been modified (cropped) and is licensed under a CC BY 2.0 license
 8. © Penn State
 9. © Penn State
 10. © Penn State
 11. © Penn State
 12. © Penn State
 13. © Penn State
 14. © Penn State
 15. © Penn State
 16. © Penn State
 17. © Penn State
 18. © Penn State
 19. © Penn State
 20. © Penn State
 21. © Penn State
 22. © Penn State
 23. © Penn State
 24. © Penn State
 25. © Penn State
 26. © Penn State
 27. © Penn State
 28. © Penn State
 29. © Penn State
 30. © Penn State
 31. © Penn State
 32. © Penn State
 33. © Penn State
 34. © Penn State
 35. © Penn State
 36. © Penn State
 37. © Penn State
 38. © Penn State
 39. © Penn State
 40. © Penn State
 41. © Penn State
 42. © Penn State
 43. © Penn State
 44. © Penn State
 45. © Penn State
 46. © Penn State
 47. © Penn State
 48. © Penn State
 49. © Penn State
 50. © Penn State
 51. © Penn State
 52. © Penn State
 53. © Penn State
 54. © Penn State
 55. © Penn State
 56. © Penn State
 57. © Penn State
 58. © Penn State
 59. © Penn State
 60. © Penn State
 61. © Penn State
 62. © Penn State
 63. © Penn State
 64. © Penn State
 65. © Penn State
 66. © Penn State
 67. © Penn State
 68. © Penn State
 69. © Penn State
 70. © Penn State
 71. © Penn State
 72. © Penn State
 73. © Penn State
 74. © Penn State
 75. © Penn State
 76. © Penn State
 77. © Penn State
 78. © Penn State
 79. © Penn State
 80. © Penn State
 81. © Penn State
 82. © Penn State
 83. © Penn State
 84. © Penn State
 85. © Penn State
 86. © Penn State
 87. © Penn State
 88. © Penn State
 89. © Penn State
 90. © Penn State
 91. © Penn State
 92. © Penn State
 93. © Penn State
 94. © Penn State
 95. © Penn State
 96. © Penn State
 97. © Penn State
 98. © Penn State
 99. © Penn State
 100. © Penn State

11

Spotted Lanternfly Permit Training Part 2: Quarantine Zones and the Lifecycle

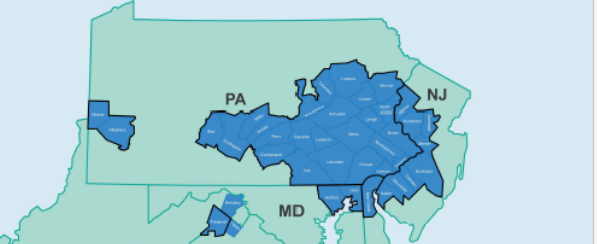


12

Spotted Lanternfly Quarantine

- Slow the spread of spotted lanternfly
- Assure trading partners
- Give science and technology time to advance

13



Spotted Lanternfly Infestations and Quarantine Areas (March 2020)

For the latest quarantine information for a state, check the state's department of agriculture website

14

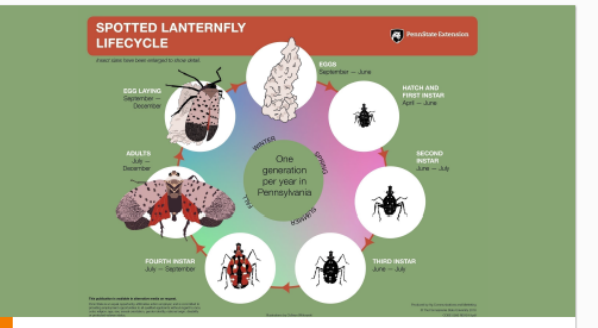
What does the quarantine mean?

No one may intentionally move viable life stages of spotted lanternfly.

Residents and workers should inspect any items that may have the insects or egg masses before moving the items.

15

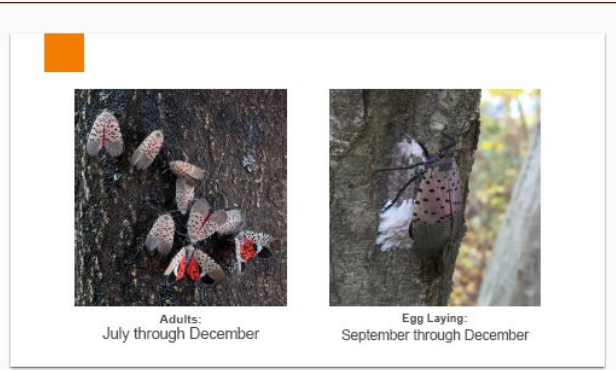
SPOTTED LANTERNFLY LIFECYCLE



16



17



18



19

Quarantine restrictions apply to:

- Brush, debris, bark, or yard waste
- Landscaping, remodeling, and construction waste
- Logs, stumps or any tree parts
- Firewood
- Packing materials like wood crates
- All plants and plant parts
- Outdoor items like grills, chairs, and tables
- Vehicles, trailers, and equipment not stored indoors
- Hardgoods (stone, tile, and decorative materials)
- ...and more!

20

Checklist for Residents Living in Spotted Lanternfly Quarantine Areas

IMPORTANT! Before you move outdoor items from the quarantine area, check for spotted lanternfly eggs, nymphs, adults, and exuviae. Please use all items you pull out before you move them. Help keep this pest from spreading.

Check before you move:

<input type="checkbox"/> Sawdust	<input type="checkbox"/> Sawdust	<input type="checkbox"/> Saw
<input type="checkbox"/> Spotted lanternfly	<input type="checkbox"/> Spotted lanternfly	<input type="checkbox"/> Saw
<input type="checkbox"/> Nymphs	<input type="checkbox"/> Spotted lanternfly	<input type="checkbox"/> Spotted lanternfly
<input type="checkbox"/> Exuviae	<input type="checkbox"/> Spotted lanternfly	<input type="checkbox"/> Spotted lanternfly

Other quarantine items:

<input type="checkbox"/> Debris	<input type="checkbox"/> Firewood or stumps	<input type="checkbox"/> Spotted lanternfly
<input type="checkbox"/> Landscaping, remodeling, and construction waste	<input type="checkbox"/> Logs, stumps or any tree parts	<input type="checkbox"/> Spotted lanternfly
<input type="checkbox"/> Packing materials like wood crates	<input type="checkbox"/> All plants and plant parts	<input type="checkbox"/> Spotted lanternfly
<input type="checkbox"/> Outdoor items like grills, chairs, and tables	<input type="checkbox"/> Vehicles, trailers, and equipment not stored indoors	<input type="checkbox"/> Spotted lanternfly
<input type="checkbox"/> Hardgoods (stone, tile, and decorative materials)	<input type="checkbox"/> ...and more!	<input type="checkbox"/> Spotted lanternfly

Other items:

<input type="checkbox"/> Spotted lanternfly	<input type="checkbox"/> Spotted lanternfly	<input type="checkbox"/> Spotted lanternfly
<input type="checkbox"/> Spotted lanternfly	<input type="checkbox"/> Spotted lanternfly	<input type="checkbox"/> Spotted lanternfly
<input type="checkbox"/> Spotted lanternfly	<input type="checkbox"/> Spotted lanternfly	<input type="checkbox"/> Spotted lanternfly
<input type="checkbox"/> Spotted lanternfly	<input type="checkbox"/> Spotted lanternfly	<input type="checkbox"/> Spotted lanternfly
<input type="checkbox"/> Spotted lanternfly	<input type="checkbox"/> Spotted lanternfly	<input type="checkbox"/> Spotted lanternfly
<input type="checkbox"/> Spotted lanternfly	<input type="checkbox"/> Spotted lanternfly	<input type="checkbox"/> Spotted lanternfly
<input type="checkbox"/> Spotted lanternfly	<input type="checkbox"/> Spotted lanternfly	<input type="checkbox"/> Spotted lanternfly
<input type="checkbox"/> Spotted lanternfly	<input type="checkbox"/> Spotted lanternfly	<input type="checkbox"/> Spotted lanternfly
<input type="checkbox"/> Spotted lanternfly	<input type="checkbox"/> Spotted lanternfly	<input type="checkbox"/> Spotted lanternfly
<input type="checkbox"/> Spotted lanternfly	<input type="checkbox"/> Spotted lanternfly	<input type="checkbox"/> Spotted lanternfly

Checklist for Residents Living in Spotted Lanternfly Quarantine Areas

IMPORTANT! Before you move outdoor items from the quarantine area, check for spotted lanternfly eggs, nymphs, adults, and exuviae. Please use all items you pull out before you move them. Help keep this pest from spreading.

Check before you move:

• Sawdust

• Spotted lanternfly

• Nymphs

• Exuviae

• Firewood or stumps

• Logs, stumps or any tree parts

• Landscaping, remodeling, and construction waste

• Packing materials like wood crates

• All plants and plant parts

• Outdoor items like grills, chairs, and tables

• Vehicles, trailers, and equipment not stored indoors

• Hardgoods (stone, tile, and decorative materials)

• ...and more!

21

Spotted Lanternfly Permits

For businesses that move items within and out of a quarantine zone

22

Image Credits

Unless otherwise noted, all images are courtesy of Penn State.

1. Karl Gerber / Penn State
2. "CORVIDA" by J. S. Dyer / Penn State
3. "The Spotted Lanternfly" by Karl Gerber / Penn State
4. "The Spotted Lanternfly" by Karl Gerber / Penn State
5. "The Spotted Lanternfly" by Karl Gerber / Penn State
6. "The Spotted Lanternfly" by Karl Gerber / Penn State
7. "The Spotted Lanternfly" by Karl Gerber / Penn State
8. "The Spotted Lanternfly" by Karl Gerber / Penn State
9. "The Spotted Lanternfly" by Karl Gerber / Penn State
10. "The Spotted Lanternfly" by Karl Gerber / Penn State
11. "The Spotted Lanternfly" by Karl Gerber / Penn State

23

Spotted Lanternfly Permit Training Part 3: What You Can Do

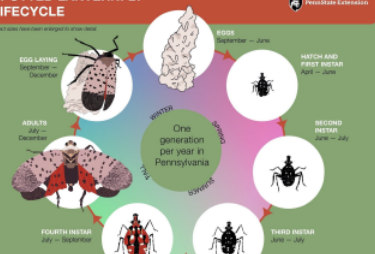
24

Help stop the spread of spotted lanternfly by following biosecurity best practices.



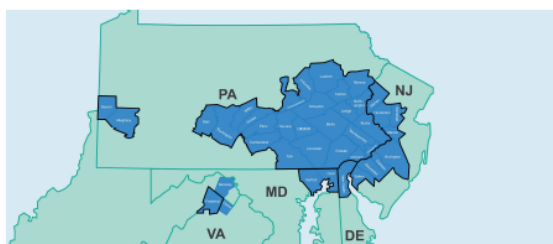
25

SPOTTED LANTERNFLY LIFECYCLE



Be aware of the life stages present at a given time of the year.

26



Know when you are in an infested area.

27

Biosecurity Best Practices



Do not park under trees or tree lines.



Do not leave vehicles open.

If possible, store vehicles and equipment inside.

28

Biosecurity Best Practices



In heavily infested areas, tuck pant legs into socks.



Make sure none are resting on your person.

29



Swat or smash as many as you can!

30



Chip woody debris (1-inch chips)

31



Before moving equipment and supplies, inspect for insects and egg masses.

32



Scrape and destroy egg masses.

33



Report Sightings of Spotted Lanternfly

1. Take a photograph of it. If you can, use a smartphone or a camera with the GPS turned on so that we know the exact location.
2. If you can, capture it and put it in a container filled with alcohol to kill and preserve it, so that the sighting can be verified.
3. Refer to the following state websites for reporting instructions:

Pennsylvania: <https://extension.psu.edu/have-you-seen-a-spotted-lanternfly>
New Jersey: <https://www.nj.gov/agriculture/divisions/10100/spotted-lanternfly.html>
Maryland: <https://mda.maryland.gov/plants-pests/Pages/spotted-lantern-fly.aspx>
Delaware: <https://agriculture.delaware.gov/plant-industries/spotted-lanternfly/>
Virginia: <https://www.vdacs.virginia.gov/offices/spotted-lantern-fly-pest-alert.pdf>
New York: <https://www.agriculture.ny.gov/ADirelease.asp?ReleaseID=1821>



34

Image Credits

Unless otherwise noted, all images are courtesy of Penn State.

4 - S. Kael Griffin / Penn State

6. m9_353 / iStockphoto.com

6.2. Bianca Robertson / Penn State

7. "20180320-APHIS-LSC-11927" by United States Department of Agriculture / usdagov on Flickr.com has been modified (cropped) and is in the public domain.

8.1. "20180320-APHIS-TE-0178" by United States Department of Agriculture on Flickr.com has been modified (cropped) and is licensed under a CC0 Public Domain license.

8.2. "20180320-APHIS-TE-0222" by United States Department of Agriculture on Flickr.com has been modified (cropped) and is licensed under a CC0 Public Domain license.

9. "20180301-APHIS-LSC-0273" by United States Department of Agriculture / usdagov on Flickr.com has been modified (cropped) and is in the public domain.

11. Lawrence Bartinger, Pennsylvania Department of Agriculture, Bugwood.org has been modified (cropped, edited) and is licensed under a CC BY 3.0 license.