

WILLIAMSPORT
AREA
TRANSPORTATION
STUDY
METROPOLITAN
PLANNING
ORGANIZATION

PUBLIC
PARTICIPATION
PLAN



2019



**Adopted by Williamsport MPO
December 19, 2013
Amended
January 27, 2020**

The Williamsport Area Transportation Study (WATS) Metropolitan Planning Organization (MPO) fully complies with Title VI of the Civil Rights Act of 1964, Executive Order 12898 on Environmental Justice, and related nondiscrimination statutes and regulations in all programs and activities. WATS' website, <http://www.lyco.org/WATS-MPO>, may be translated into multiple languages. Publications and other public documents can be made available in alternative languages and formats, as requested.

WATS' public meetings are always held in ADA-accessible facilities and in transit-accessible locations when possible. Auxiliary services can be provided to individuals who submit a request at least seven (7) days prior to a meeting. Requests made within seven (7) days will be accommodated to the greatest extent possible.

Any person who believes they have been aggrieved by an unlawful discriminatory practice by WATS under Title VI has a right to file a formal complaint. Any such complaint may be in writing and filed with the WATS's Title VI Compliance Officer and/or the appropriate state or federal agency within 180 days of the alleged discriminatory occurrence. For more information on WATS's Title VI program, or to obtain copies of WATS' Title VI Policies, Complaint Procedures, or Complaint Form, please call (570) 320-2130, email jlavelle@lyco.org, or visit the WATS MPO website at <http://www.lyco.org/Departments/Planning-and-Community-Development/Transportation-Planning/Transportation-Planning-Calendar>.

Documents will be made available in alternative languages or formats if requested. Persons requiring additional accommodations or those with questions should call 570-320-2130.

Table of Contents

Chapter 1 - Introduction.....	6
WATS core functions include:.....	7
WATS Committee Structure.....	7
Technical Committee.....	7
Coordinating Committee.....	8
Current Advisory Committees, Ad-hoc Work Groups, and Task Forces.....	9
Committee Vacancies and Member Removal.....	9
Revisions to WATS MPO Products/Projects.....	10
Amendments and Administrative Actions.....	10
Additional Opportunity for Public Comment.....	12
How Can You Participate.....	13
Chapter 2 - Why have Public Participation.....	14
Who is “the Public”.....	14
Federal Requirements - Public Participation Plan.....	14
Americans with Disabilities Act (ADA).....	14
Title VI of the Civil Rights Act.....	14
Environmental Justice (EJ).....	15
Limited English Proficiency (LEP).....	16
State Requirements – Public Participation Plan.....	16
Commonwealth of Pennsylvania, Sunshine Law.....	16
Chapter 3 - Overview of the WATS Transportation Planning Process.....	17
MPO Public Participation Plans.....	17
WATS MPO Approach toward Fulfillment of Public Participation Process.....	18
Interested Parties.....	18
WATS MPO Products/Reports.....	19
Unified Planning Work Program (UPWP).....	19
Long Range Transportation Plan (LRTP).....	20
Transportation Improvement Plan (TIP).....	22
Public Participation Plan (PPP).....	22
Title VI Policy and Procedures.....	23
Limited English Proficiency Plan (LEP Plan).....	23
Coordinated Public Transit Plan.....	23

Local Technical Assistance Program (LTAP) Annual Report	24
Annual List of Federally Obligated Projects	24
WATS MPO Annual Report.....	25
Chapter 4 – Compliance with State and Federal Requirements	25
WATS Public Outreach Techniques	25
WATS MPO General Public Participation Procedures	26
Public Meetings	26
Unplanned/Short Notice Meeting Procedure	27
Public Comment.....	27
Outreach and Visualization Techniques	28
Public Participation Plan Requirements	28
Compliance with PA Sunshine Law	28
Compliance with Federal Government Requirements.....	28
Population by Age Group	30
Environmental Justice Plan.....	33
Identification of Environmental Justice Populations	33
Identification of traditionally underserved and underrepresented populations.....	33
Identification of Minority Populations.....	35
Disparities in Minority Populations Public Participation Process	36
Minority Populations Public Participation Techniques/Procedures	36
Identification of Low-income Population.....	37
Disparities in Low-Income Population Public Participation Process	38
Low-Income Population Public Participation Techniques/Procedures.....	38
Environmental Justice Analysis.....	39
Title VI Plan.....	39
Identification of Title VI Populations	40
National Origin	40
Foreign Born Population.....	42
Disparities in Title VI Populations Public Participation Process.....	42
Title VI Populations Public Participation Techniques/Procedures.....	43
WATS MPO Title VI Complaint Procedure.....	43
Americans with Disabilities Act Plan.....	43
Identification of Disabled Population	44

Disparities in Disabled Populations Public Participation Process	45
Disabled Population Techniques/Procedures.....	45
Limited English Proficiency, (LEP) Plan	46
Lycoming County Limited English Proficiency (LEP) Profile	46
2013-2017 American Community Survey 5 Year Estimates.....	46
Identification of Limited English Proficiency Population	48
Disparities in LEP Population Public Participation Process.....	48
Limited English Proficiency Population Techniques/Procedures.....	49
Future Public Participation Plan Efforts and Evaluation Procedures	49
Appendix A: Glossary of Acronyms.....	51
Appendix B: Interested Party Organizations	55
Appendix C: WATS MPO Title VI Complaint Form.....	64
Appendix D: Glossary.....	65
Appendix E: WATS Bylaws.....	66
Appendix F: Summary of Public Comments	67

Chapter 1 - Introduction

A Metropolitan Planning Organization (MPO) is a planning body composed of elected and appointed officials representing local, state and federal governments or other agencies having an interest or responsibility in the local transportation system. The MPO is responsible for creating a Long Range Transportation Plan (LRTP), a Transportation Improvement Program (TIP), and a Unified Planning Work Program (UPWP). An MPO can be a regional, multicounty organization or a single county.

The Williamsport Area Transportation Study Metropolitan Planning Organization (WATS MPO) is the single county MPO covering Lycoming County. The role of the WATS MPO is to develop transportation policies, programs and projects, which move people and goods in a safe, efficient manner, promote economic development, protect the environment, and preserve Lycoming County's outstanding quality of life amenities.

The Lycoming County Planning & Community Development (PCD) staff assumes lead responsibility for undertaking Federal Highway Administration (FHWA) funded planning tasks while River Valley Transit (RVT) is responsible for undertaking the FTA transit planning tasks contained in this work program. WATS MPO public meetings are now held at least quarterly throughout the year. All WATS MPO Technical and Coordinating Committee meetings are publicly advertised in compliance with the PA Open Meetings Law and WATS MPO Public Participation Plan.

The WATS MPO is the transportation planning and program partner for Pennsylvania Department of Transportation (PennDOT) Engineering District 3-0.

The contents of this Plan contain references to Federal Regulations or State Guidelines for public participation in the transportation process, including, but not limited to the following:

- Code of Federal Regulations Title 23 § 450.316
- Presidential Executive Order 12898, Environmental Justice
- Title VI of the Civil Rights Act of 1964
- The Americans with Disabilities Act (ADA) of 1990
- Executive Order 13166, Improving Access to Services for Persons with Limited-English Proficiency
- Commonwealth's Sunshine Law (65 PA C.S. § 701-716)

Federal law, (SAFETEA-LU and MAP-21) requires that *“the MPO shall develop and use a documented participation plan that defines the process for providing citizens, affected public agencies, representatives of public transportation employees, freight shippers, providers of freight transportation services, private providers of transportation, representatives of users of public transportation, representatives of users of pedestrian walkways and bicycle transportation facilities, representatives of the disabled, and other interested parties with reasonable opportunities to be involved in the metropolitan transportation planning process.”*

Federal law and regulations require the establishment of a Metropolitan Planning Organization, (MPO) to oversee the transportation planning process in all urbanized areas

of the nation having a population of 50,000 or more persons as documented by the U.S. Bureau of the Census as part of the decennial census. The Williamsport Area Transportation Study, (WATS) serves as the designated Metropolitan Planning Organization (MPO) for the Williamsport Urbanized area established under a legal Agreement with PennDOT approved in 1968. The WATS MPO jurisdictional boundary was further extended in 1991 to encompass the entire geographic area of Lycoming County. WATS MPO undertakes the federal transportation planning and programming process within Lycoming County, including the development and approval of the WATS Long Range Transportation Plan (LRTP), WATS Transportation Improvement Program (TIP) and WATS Public Participation Plan (PPP).

WATS core functions include:

- ❖ *Establish and manage a fair and impartial setting for effective regional decision-making in the planning area (Lycoming County).*
- ❖ *Identify and evaluate alternative transportation improvement options: Use data and planning methods to generate and evaluate alternatives. Planning studies and evaluations are included in the MPO Unified Planning Work Program, (UPWP).*
- ❖ *Develop a Transportation Improvement Program (TIP): Develop a short-range (four-year) program of transportation improvements based on the long-range transportation plan. The TIP should be designed to achieve the area's goals, using spending, regulation, operating, management and financial tools.*
- ❖ *Involve the public: Continually involve the general public and other affected constituencies in the essential functions listed above.*

WATS Committee Structure

The WATS MPO is organizationally structured with two Committees, a Technical Committee and a Coordinating Committee with defined functions and membership composition as follows:

Technical Committee

The purpose of the Technical Committee is to oversee the development of detailed transportation planning documents, special studies and other technical analysis that documents multi-modal transportation issues and needs and provide advice and recommendations to the Coordinating Committee. The Technical Committee consists of seven (7) voting members, as follows:

- PennDOT Center for Program Development and Management Representative

- PennDOT Engineering District 3-0 Representative
- Lycoming County Planning and Community Development Director
- Lycoming County Planning Commission Member
- River Valley Transit General Manager
- Williamsport Regional Airport Executive Director
- City of Williamsport Engineer/Community Development Director

The PennDOT Center for Program Development and Management Representative serves as Chairman of the Technical Committee.

The Technical Committee voting members are designated by their respective member organizations and serve without term limits at the discretion of their member organizations. Each member organization designates the individual(s) serving on the Technical Committee as their voting member(s) at the beginning of each calendar year and provides written documentation to the WATS MPO Chairman for WATS MPO files maintained by the Lycoming County Planning and Community Development Department. Member organizations designate an alternate voting member that may vote on behalf of the designated member in the case where the designated voting member is unable to attend a specific meeting.

In addition to the seven voting members, the Technical Committee includes three (3) non-voting members, as follows:

- Federal Highway Administration
- Federal Transit Administration
- Fullington Trailways

Non-voting members of the Technical Committee receive WATS reports, meeting notices, agendas, and participate in WATS discussions, but serve without a vote.

Coordinating Committee

The purpose of the Coordinating Committee is to review and act upon the recommendations of the Technical Committee and serve as the official policy decision-making body of the WATS MPO.

The Coordinating Committee consists of eleven (11) voting members, comprising elected and appointed officials as follows:

- PennDOT Engineering District 3-0 Executive
- PennDOT Deputy Secretary for Planning
- Lycoming County Commissioner
- Lycoming County Commissioner
- Mayor, City of Williamsport
- Council Member, City of Williamsport
- River Valley Transit General Manager
- SEDA-COG Joint Rail Authority Executive Director
- Williamsport Regional Airport Executive Director
- Lycoming County Association of Township Officials Representative

- Lycoming-Sullivan Boroughs Association Representative

The PennDOT Engineering District 3-0 Executive serves as Chairman of the Coordinating Committee.

Again, the Coordinating Committee voting members shall be designated by their respective member organizations and serve without term limits at the discretion of their member organizations. Each member organization designates the individual(s) serving on the Coordinating Committee as their voting member(s) at the beginning of each calendar year and provides written documentation to the WATS MPO Chairman for WATS MPO files maintained by the Lycoming County Planning and Community Development Department. Member organizations also designate an alternate voting member that may vote on behalf of the designated voting member in the case where the designated voting member is unable to attend a specific meeting.

In addition to the 11 voting members, the Coordinating Committee includes two (2) non-voting members, as follows:

- Federal Highway Administration
- Federal Transit Administration

Non-voting members of the Coordinating Committee receive WATS MPO reports, meeting notices, agendas, and participate in WATS MPO discussions, but serve without a vote.

Current Advisory Committees, Ad-hoc Work Groups, and Task Forces

The WATS MPO Coordinating Committee may establish advisory committees, ad hoc work groups, special purpose task forces or steering committees to gather specialized experience, technical advice and input that may be needed to help carry forth transportation planning related activities under the jurisdiction of the WATS MPO transportation planning process. The WATS MPO has established a Transit Advisory Committee and a Bicycle / Pedestrian Advisory Committee. Both committees are comprised of WATS members, transit providers, and various social service and community organizations to provide input and recommendations to the WATS MPO on public transit, bicycle, and pedestrian issues and needs in Lycoming County.

Committee Vacancies and Member Removal

Article IV of the WATS MPO Bylaws outline the process for filling vacancies, or removing members on the Technical and Coordinating Committees. Vacancies on the WATS MPO Coordinating or Technical Committee shall be filled by an appointment by the responsible organization. Removal of any member, or their representative, of the WATS MPO Coordinating or Technical Committee, due to failure to attend meetings, or for other reasons, shall be at the discretion of the appointing authority.

Revisions to WATS MPO Products/Projects

Amendments and Administrative Actions

During development and updates of WATS MPO products/projects, it may be necessary to revise the product/project. These revisions occur in two groups: *Amendments and Administrative Actions*. The PennDOT / WATS Memorandum of Understanding (MOU) defines what is considered an amendment or administrative modification.

An **Amendment** is a revision that adds a new project, deletes an existing project, or involves a major change to an existing project included in a STIP/WATS TIP that:

- Affects air quality conformity regardless of the cost of the project or the funding source;
- Adds a new project, deletes a project that utilizes federal funds, or federalizes a project that previously was 100% state and/or locally funded. A new project is a project that is not programmed in the current STIP/WATS TIP, and does not have previous obligations from a prior STIP/WATS TIP. Federally-funded Statewide Program projects are excluded from this provision;
- Adds a new phase(s) to an existing project, deletes a project phase(s), increases or decreases a project phase(s) that utilizes federal funds where the revision exceeds the following thresholds:
 - \$7.5 million for the Interstate Management (IM) Program
 - \$2 million for WATS
 - \$1 million for other federally-funded Statewide Programs
- Involves a change in the scope of work to a project(s) that would:
 - Result in an air quality conformity reevaluation
 - Result in a revised total project estimate that exceeds the thresholds established between PennDOT and WATS (not to exceed any federally-funded threshold contained in this MOU)
 - Results in a change in the scope of work on any federally-funded project that is significant enough to essentially constitute a new project
- During a WATS LRTP lapse, all STIP/WATS TIP revisions will be treated as amendments and the below administrative modifications will not be utilized (or be in effect).

Approval by the WATS MPO is required for **Amendments**. The WATS MPO must then request PennDOT Central Office approval using the e-STIP process. A Fiscal Constraint Chart (FCC) must be provided that depicts the transfer of funds from one source to another, demonstrating fiscal constraint. The FCC summarizes the before, requested adjustments, after changes, and detailed comments explaining the reason for the adjustment(s), and provides any PMC materials that may have been prepared, along with an updated TIP. PennDOT's Central Office will review, approve, and forward to the appropriate federal agency for review and approval, with a courtesy copy to the other federal agency. An eSTIP submission shall include:

- Fiscal Constraint Chart with remarks
- Pdf copy of the TIP

- Supporting materials to explain the reasoning, cause, and/or justification for the amendment revision, as needed, such as PMC items.

The initial submission and approval process of the federally-funded Statewide Program or increases/decreases exceeding the thresholds above will be considered an amendment (subsequent placement of these individual projects or line items on the WATS TIP will be considered an administrative modification). In the case of Statewide Programs, including the IM Program and other federally-funded statewide programs, approval by PennDOT's Program Management Committee (PMC) and FHWA is required.

Administrative Actions are minor revisions to existing products/projects. These can include minor changes to cost or changes to project initiation dates. If an administrative action is needed the administrative actions will be presented at a WATS MPO Technical Committee meeting, but do not require approval by a governing body or public comment.

An **Administrative Modification** is a minor revision to a STIP/WATS TIP that:

- Shifts federally-funded projects, a federally-funded project phase(s), or federal funds to existing federally-funded projects or a federally-funded project phase(s) in the approved STIP/WATS TIP and must maintain year-to-year STIP/TIP fiscal constraint requirements;
- Adds a project from a funding initiative or line item that utilizes 100 percent state or non-federal funding; or WATS TIP placement of the federally-funded Statewide Program;
- Adds a project for emergency repairs to roadways or bridges, except those involving substantial, functional, location, or capacity changes;
- Draws down or returns funding from an existing STIP/WATS TIP reserve line item and does not exceed the threshold established in this MOU. A reserve line item holds funds that are not dedicated to a specific project(s) and may be used to cover cost increases or add an additional project phase(s) to an existing project;
- Adds federal or state capital funds from low-bid savings, de-obligations, release of encumbrances, or savings on programmed phases to another programmed project phase or line item but does not exceed the above thresholds.

Administrative Modifications do not affect air quality conformity nor involve a significant change in the scope of work to a project(s) that would trigger an air quality conformity re-evaluation; does not add a new federally-funded project or delete a federally-funded project; does not exceed the threshold established in this MOU, or the threshold established by this MOU (as detailed in the Amendment Section); and does not result in a change in scope, on any federally-funded project that is significant enough to essentially constitute a new project. A change in scope is a substantial alteration to the original intent or function of a programmed project.

Administrative Modifications do not require federal approval. PennDOT and WATS will work cooperatively to address and respond to any FHWA and/or FTA comment(s). FHWA and FTA reserve the right to question any administrative action that is not consistent with federal regulations or with this MOU where federal funds are being utilized.

All revisions, amendments, and administrative modifications shall be identified, numbered, and grouped as one action on a FCC demonstrating both project and program fiscal constraint. The identified grouping of projects (the entire revision action) will require review and/or approval by the Cooperating Parties. In the case that a project phase is pushed out of the TIP period, WATS will demonstrate, through an FCC, fiscal balance of the subject project phase on the second period of the WATS LRTP.

Additional Opportunity for Public Comment

In the event that major revisions have occurred to a WATS MPO product/project, and the end product/project differs significantly from what was made available for public comment, the WATS MPO will provide an additional opportunity for public comment.

To ensure the full and fair public participation in the transportation decision-making process, the WATS MPO will make the new product/project available during a new public comment period, and follow the procedures outlined in [WATS Public Outreach Techniques](#).

How Can You Participate

HOW TO GET INVOLVED IN TRANSPORTATION PLANNING

CALL US
570-320-2130 during normal business hours
7:30 a.m. to 4:00 p.m. Monday through Friday

WRITE TO US
Williamsport Area Transportation Study
Metropolitan Planning Organization (WATS-MPO)
Lycoming County Planning 48 W. Third Street Williamsport, PA 17701

EMAIL US
General Inquiries/ Title VI/ Limited English Proficiency: jlavelle@lyco.org
Public Involvement/ Media/ Website/ Social Media: svitko@lyco.org

VISIT OUR WEBSITE
www.lyco.org/WATS-MPO
To view and download transportation related information and upcoming public meeting notices

FOLLOW US ON SOCIAL MEDIA
On Twitter @LycoGovt
On Facebook at Lycoming County Government
Instagram at [lycomingcountygovernment](https://www.instagram.com/lycomingcountygovernment)

COME TO AN EVENT
WATS-MPO participates in special events throughout the planning area. Visit the WATS-MPO Public Involvement website to view opportunities

PARTICIPATE IN PERSON
Attend a WATS-MPO Coordinating Committee meeting
Visit WATS-MPO at the Executive Plaza Building
330 Pine Street, 3rd Floor, Williamsport PA, 17701

WILLIAMSPORT AREA TRANSPORTATION STUDY WATS METROPOLITAN PLANNING ORGANIZATION

Fully accessible Public Transportation provided by River Valley Transit. Contact (570) 326-2500 for more information or visit www.ridervt.com.

Chapter 2 - Why have Public Participation

Who is “the Public”

The public is comprised of all the diverse communities living in and around the WATS MPO area. The public includes those individuals who choose not to participate, people who are interested and want their views to be heard but for multiple reasons cannot participate, and individuals who are not comfortable with either of those roles, but are still affected by transportation decisions.

Federal Requirements - Public Participation Plan

According to the Federal Highway Administration (FHWA), current Federal statutes and regulations provide general guidelines for the public involvement processes and procedures. There is great flexibility available to transportation agencies in developing specific public involvement / participation plans. However, while the set of techniques for any given situation may differ, depending upon such factors as demographics and identified potential impacts, the general approach to developing a public involvement / public participation plan contains elements that are relevant and responsive to all communities. Below are brief excerpts from relevant federal statutes, regulations and Executive Orders setting forth key elements of the public involvement process that is to be used during the transportation planning and project development process.

Americans with Disabilities Act (ADA)

The Americans with Disabilities Act of 1990 (ADA) *“prohibits discrimination on the basis of disability by public entities in services, programs, and activities. Public entities are required to make programs accessible to individuals with disabilities including conducting meetings and hearings in ADA-compliant buildings. Special accommodations must be provided to ensure communications are equally effective for persons with disabilities in order to participate in meetings, planning and programming activities.”* With advance notice, special provisions must be made to accommodate hearing-impaired or visually impaired participants.

The WATS MPO addresses the Americans with Disabilities Act (ADA) accommodation procedures further in this plan in the [Americans with Disabilities Act Plan](#).

Title VI of the Civil Rights Act

Title VI of the Civil Rights Act of 1964 is the federal law that protects individuals from discrimination based on an individual’s race, color, or national origin in programs that receive federal financial assistance. Title VI states, **“No person in the United States shall, on the ground of race, color or national origin, be excluded from participation in, be denied the benefits of, or be subjected to discrimination under any program or activity receiving federal financial assistance.”**

There are many forms of illegal discrimination based on race, color, or national origin that can limit the opportunity of individuals to gain equal access to services and programs.

For example, in operating a federally assisted program, a recipient cannot, based on race, color, or national origin, either directly or through contractual means:

- Engage in intentional discrimination because of race, color, or national origin;
- Use criteria or methods of administration which have the effect of subjecting persons to discrimination because of their race, color, or national origin; or,
- Intimidate, threaten, coerce, or discriminate against any individual in retaliation for exercising a right or privilege.

The WATS MPO addresses Title VI complaint procedures further in this plan in the [WATS MPO Title VI Plan](#).

Environmental Justice (EJ)

Public participation must also take into consideration Presidential Executive Order 12898 establishes provisions for *Environmental Justice*. Executive Order 12898 states “*Each Federal agency shall make achieving environmental justice part of its mission by identifying and addressing, as appropriate, disproportionately high and adverse human health or environmental effects of its programs, policies, and activities on minority populations and low-income populations. Each Federal agency, whenever practicable and appropriate, shall collect, maintain, and analyze information assessing and comparing environmental and human health risks borne by populations identified by race, national origin, or income. To the extent practical and appropriate, Federal agencies shall use this information to determine whether their programs, policies, and activities have disproportionately high and adverse human health or environmental effects on minority populations and low-income populations.*”

Further, the Federal Highway Administration establishes three fundamental environmental justice principles:

- To avoid, minimize, or mitigate disproportionately high and adverse human health and environmental effects, including social and economic effects, on minority populations and low-income populations.
- To ensure the full and fair participation by all potentially affected communities in the transportation decision-making process.
- To prevent the denial of, reduction in, or significant delay in the receipt of benefits by minority and low-income populations.

Therefore, all recipients of Federal aid are required to certify nondiscrimination under *Title VI* of the *Civil Rights Act of 1964*. To ensure that the WATS MPO meets the principles laid out by the Federal Highway Administration, US census tract data is gathered and an Environmental Justice mapping analysis is completed in order to determine where minority and low-income populations may exist. Projects are then overlaid onto this map and project specific analysis is completed to determine the “benefits and burdens” on how transportation investments are affecting the WATS MPO minority and low-income populations.

The WATS MPO addresses Environmental Justice compliance procedures further in this plan in the [WATS MPO Environmental Justice Plan](#).

Limited English Proficiency (LEP)

On August 11, 2000, the President signed Executive Order 13166, “Improving Access to Services for Persons with *Limited English Proficiency, (LEP)*.” “LEP” persons are those individuals who do not speak English as their primary language, and who have a limited ability to read, speak, write or understand English. The key commonality among LEP persons is their inability to communicate effectively in the English language, regardless of their native tongue. Persons that are multi-lingual, in that they speak one or more other languages **in addition to being proficient in English**, are not considered Limited English Proficient. The Executive Order is intended to improve access to federally assisted programs and activities for persons who, because of national origin, are limited in their English proficiency.

The Federal Highway Administration has published guidance related to LEP in 2005, which includes methods by which transportation agencies can determine the need for translation of materials or provision of interpreters at public hearings or other events. It states that recipients “are required to take reasonable steps to ensure meaningful access to their programs and activities by LEP persons.”

The WATS MPO addresses Limited English Proficient accommodation procedures further in this plan in the [WATS MPO LEP Plan](#).

State Requirements – Public Participation Plan

Commonwealth of Pennsylvania, Sunshine Law

Act 84 of 1986 as amended June 15, 1993, February 26, 1996 and October 15, 1998 is an act requiring public agencies to hold certain meetings and hearings open to the public; and providing penalties. The PA General Assembly finds that secrecy in public affairs undermines the faith of the public in government. Highlights of this law include:

- ❖ *Official action and deliberation by a quorum of the members of an agency shall take place at a meeting open to the public.*
- ❖ *Written minutes shall be kept of all open meetings of agencies.*
- ❖ *Public notice is not required in the case of an emergency meeting or a conference.*
- ❖ *The board or council has the option to accept all public comment at the beginning of the meeting.*
- ❖ *A person attending a meeting of an agency shall have the right to use recording devices to record all the proceedings.*



Chapter 3 - Overview of the WATS Transportation Planning Process

MPO Public Participation Plans

The Federal SAFETEA-LU Act requires MPO's to develop and document, in consultation with interested parties, a Public Participation Plan that details strategies for incorporating visualization techniques, using electronic media, holding public meetings, and responding to public input, among other things, prior to development of the MPO Long Range Transportation Plan and MPO Transportation Improvement Program. The public involvement process shall include the publication and distribution of draft versions of the proposed plan and provide adequate opportunities for review and comment. The approved plan must also be published or made readily available in other ways for informational purposes. Where possible, this process should include visualization techniques and make use of the internet. Federal regulations require that public officials (elected and appointed) and citizens have adequate opportunity to participate in the development of the Long Range Transportation Plan before it is approved and adopted by the MPO. The regulations explicitly identify several parties who should be engaged and involved throughout the plan development / update process.

The purpose of this section is to describe the public participation process for the WATS MPO. The Public Participation Plan consists of methods that facilitate and encourage citizen participation in the WATS MPO transportation planning process. Public involvement is a **right of all residents** of Lycoming County. Public participation is essential to good planning. Without meaningful public participation, there is a risk of making poor decisions, or decisions that have unintended negative consequences. The fundamental objective of public participation programs is to make certain that everyone with an interest in transportation decisions has an opportunity to provide input in the development of policies, programs and projects that are proposed in Lycoming County.

The Public Participation Plan (PPP) is the tool that the WATS MPO uses to ensure residents and stakeholders have a voice in the project development and planning processes. In 1991, Congress passed the Intermodal Surface Transportation Efficiency Act of 1991 in an effort to increase the amount of public involvement in transportation planning. The emphasis for greater public involvement in transportation planning was continued with the passage of the Transportation Equity Act for the 21st Century (TEA-21), the Safe, Accountable, Feasible, Efficient Transportation Act – A Legacy for Users (SAFETEA-LU), the Moving Ahead for Progress in the 21st Century Act (MAP-21), and the Fixing America's Surface Transportation Act (FAST). The WATS MPO Public Participation Plan is designed to establish a process that provides:

- Timely information to the public
- Timely public notice of meetings, advisory committee appointments, and workshops
- Public access to key decisions
- Early and continuing involvement of the public in developing transportation plans and transportation improvement programs

The WATS MPO Public Participation Plan incorporates the MAP-21 standards by:

- Providing citizens and affected public agencies, and representatives of public transportation employees a forum for public participation in statewide and regional planning processes.
- Develops its Public Participation Plan in consultation with all interested parties
- Employs visualization techniques to describe plans
- Holds public meetings at convenient and ADA accessible locations and times
- Ensures public information is available in electronically accessible format, such as the internet, as appropriate to afford reasonable opportunity for consideration of public information.

WATS MPO Approach toward Fulfillment of Public Participation Process

This section of the Public Participation Plan specifically outlines how the WATS MPO, under the leadership direction of the Lycoming County Board of Commissioners and Planning staff, responds to the previously outlined federal and state requirements regarding public involvement in the development of the LRTP, TIP, and during the transportation project development process and preparation of special studies and related plans.



Lycoming County Board of Commissioners

From Left:
Commissioner Mirabito,
Commissioner McKernan,
Commissioner Mussare

Interested Parties

Interested parties are generally defined under federal SAFETEA-LU legislation. In response, the WATS MPO has further defined interested parties to ensure local public participation among all categories of transportation users and stakeholders defined in the law. The Public Participation Plan identifies a number of organizations as interested parties. The WATS MPO conducts direct mailings, emails, and outreach calls to multiple interested parties / stakeholder organizations during development of the WATS Long Range Plan, the Transportation Improvement Program, and other WATS initiatives as appropriate. A full interested party organization list is found in [Appendix B Interested Party Organizations](#) of the Public Participation Plan.

WATS MPO Products/Reports

There are a number of reasons that public involvement / public participation is important to the WATS MPO product process. As mentioned previously, public participation is essential to good planning. Without meaningful public participation, there is a risk of making poor decisions, or decisions that have unintended negative consequences. Below is a list of the different products the WATS MPO creates/updates, along with the estimated timeline for completion. All of the products/reports are viewable/accessible via the [WATS-MPO website](#) and print versions of all products/reports are available at the Lycoming County Planning and Community Development Department.

Product	Update Cycle	Current	Next	
		Adoption/Completion	Required Adoption	Targeted Completion
Unified Planning Work Program (UPWP)	2 Years	November 18, 2019	January 31, 2022	August, 2021
Long Range Transportation Plan (LRTP)	5 Years	December 17, 2018	December 31, 2023	December, 2023
Transportation Improvement Program (TIP)	2 Years	June 18, 2018	June 30, 2020	April, 2020
Environmental Justice Analysis of Benefits and Burdens	As needed	December 17, 2018	As needed	November 18, 2019
Public Participation Plan (PPP)	As Needed	July 18, 2016	As needed	January, 2020
Title VI Policy & Procedures	As Needed	July 18, 2016	As needed	January, 2020
Limited English Proficiency (LEP) Plan	As Needed	July 18, 2016	As needed	January, 2020
Coordinated Public Transit Plan	As Needed	November 18, 2019	As needed	As needed
Local Technical Assistance Program (LTAP) Annual Report	Annual	July 31, 2019	July 31, 2020	July 31, 2020
Annual List of Federally Obligated Projects	Annual	December 17, 2018	December 31, 2019	November 18, 2019
WATS MPO Annual Report	Annual	June 2019	As needed	April 30, 2020

Unified Planning Work Program (UPWP)

The Unified Planning Work Program describes the transportation-related work activities that the Lycoming County Department of Planning and Community Development (PCD) and River Valley Transit (RVT) (with the aid of planning consultants, as necessary) will perform within Lycoming County.

The UPWP is updated every 2 years. During the update process, the WATS MPO will ensure the full and fair participation by all potentially affected communities in the transportation decision-making process by providing opportunities for public comment/participation throughout the review process and 30-day public comment period. A Summary of Public Comments will be included in the final UPWP showing analysis and disposition of public comments. Examples of public comment/participation opportunities

include Lycoming County Commissioner meetings, Lycoming County Planning Commission meetings, social media notices, WATS MPO meetings, accessing the draft UPWP from the [WATS MPO website](#), accessing the draft UPWP print copies available at the WATS MPO office, and by contacting the WATS MPO staff members directly.

Long Range Transportation Plan (LRTP)

The Long Range Transportation Plan delineates how the available and projected transportation funds will be spent in Lycoming County over a 20-year period. A staged transportation project listing is included along with estimated costs, funding sources and timeframes to undertake each project phase. The plan is fiscally constrained in that project costs do not exceed present and future funding levels reasonably expected to be received during the plan's timeframe. The plan addresses federal requirements to adjust project cost estimates to reflect the Year of Expenditure inflation factors in accordance with PennDOT issued guidance. The Long Range Transportation Plan also outlines the MPO's "vision" of the future transportation system; describes all existing modes of transportation such as highways, bridges, public transit, air service, rail service and bicycle and pedestrian facilities; addresses federal planning factors, and provides public policy statements by transportation mode.

The LRTP also includes a full treatment of how WATS will study and address environmental justice concerns within the transportation planning and programming process. Because the WATS MPO utilizes federal funds to plan and implement transportation projects, the MPO is responsible for undertaking analysis of federally funded projects listed within the LRTP and TIP. WATS MPO conducts environmental justice benefits and burdens analysis as needed. The outcome of this analysis is used to inform the Public Participation process for the WATS MPO.

The LRTP is updated every 5 years. As LRTP updates and the EJ benefits and burdens analyses are performed the WATS MPO will ensure the full and fair participation by all potentially affected communities in the transportation decision-making process and seek public input early and often during LRTP development. This includes multiple opportunities for public comment/participation during the 45-day public comment period. A Summary of Public Comments will be included in the final LRTP showing analysis and disposition of public comments. Examples of public comment/participation opportunities include Lycoming County Commissioner meetings, Lycoming County Planning Commission meetings, social media notices, WATS MPO meetings, accessing the draft LRTP from the [WATS MPO website](#), accessing the draft LRTP print copies available at the WATS MPO office, and by contacting the WATS MPO staff members directly. The next plan update is scheduled by the WATS MPO for adoption by December 31, 2023 (plan development will begin in 2022).

2018-2038 WATS Long Range Plan Development Public Meeting Schedule

This section outlines the 2018-2038 LRTP development and public meeting schedule. There were 15 publicly advertised meetings held or arranged by WATS during the development of this WATS Long Range Transportation Plan Update as follows:

<i>Public Meeting</i>	<i>Date/Time</i>	<i>Place</i>	<i>Topics Discussed</i>
WATS Technical Committee	9/11/17 10:00 AM	Executive Plaza, 330 Pine St, Williamsport PA	Plan Update Kickoff
WATS Coordinating Committee	9/25/17 1:00 PM	Executive Plaza, 330 Pine St, Williamsport PA	Chapter 2
WATS Technical Committee	12/4/17 10:00 AM	Executive Plaza, 330 Pine St, Williamsport PA	Opportunity for Public Input
WATS Coordinating Committee	12/18/17 1:00 PM	Executive Plaza, 330 Pine St, Williamsport PA	Opportunity for Public Input
WATS Technical Committee	1/29/18 10:00 AM	Executive Plaza, 330 Pine St, Williamsport PA	Chapter 3
WATS Coordinating Committee	2/1/18 12:00 AM	Executive Plaza, 330 Pine St, Williamsport PA	Chapter 3
WATS Technical Committee	4/16/18 10:00 AM	Executive Plaza, 330 Pine St, Williamsport PA	Chapter 1
WATS Coordinating Committee	4/30/18 1:00 PM	Executive Plaza, 330 Pine St, Williamsport PA	Chapter 1
WATS Technical Committee	6/1/18 12:00 AM	Executive Plaza, 330 Pine St, Williamsport PA	Chapter 4
WATS Coordinating Committee	6/18/18 1:00 PM	Executive Plaza, 330 Pine St, Williamsport PA	Chapter 4
Lycoming County Board of Commissioners	11/1/2018 10:00 AM	Executive Plaza, 330 Pine St, Williamsport PA	Opportunity for Public Input / Presentation of Draft Plan
Lycoming County Planning Commission (Canceled due to weather)	11/15/2018 6:00 PM	Executive Plaza, 330 Pine St, Williamsport PA	Opportunity for Public Input / Presentation of Draft Plan
WATS Technical Committee	12/3/18 10:00 AM	Executive Plaza, 330 Pine St, Williamsport PA	Opportunity for Public Input / Presentation of Draft Plan
WATS Coordinating Committee	12/17/18 1:00 PM	Executive Plaza, 330 Pine St, Williamsport PA	Summary of Public Comment / Plan Adoption
Lycoming County Planning Commission	12/20/2018 6:00 PM	Executive Plaza, 330 Pine St, Williamsport PA	Rescheduled Presentation of Adopted Plan

The WATS Technical Committee served as the overall WATS Long Range Transportation Plan development steering committee. In addition to the above noted public meeting schedule, an Agency Coordination Meeting, (ACM) consultation was held with ACM participation environmental agencies on **August 22, 2018** fulfilling the federal environmental consultation public involvement requirements. For this draft of the Long Range Transportation Plan, WATS, following the ACM presentation, which began on October 18, 2018 and concluded on December 7, 2018, advertised the federally required 45-day public comment period. A significant snowstorm, which occurred on the day of the second of two public hearings (11/15/18), forced the rescheduling/re-advertising of the hearing for the December 3, 2018 WATS Technical Committee meeting. In doing so, the public comment period was extended for an additional week to December 7, 2018.

All public comments were summarized and addressed prior to the WATS MPO plan adoption date on **December 17, 2018**. The next Long Range Plan Update adoption is scheduled for December 31, 2023.

Transportation Improvement Plan (TIP)

The WATS Transportation Improvement Program, (TIP) is a document identifying all highway, bridge and public transit projects containing Federal, State and local funds being programmed within Lycoming County during the next four Federal Fiscal Years. These types of projects cannot proceed until they are included on the TIP. The WATS MPO develops the TIP cooperatively between PennDOT, the Lycoming County PCD and RVT for review and approval every two years. Again, an extensive MPO public involvement process is employed during development of the TIP. Projects are identified from the WATS Long Range Transportation Plan consistent with financial guidance provided by PennDOT, as the TIP must also be fiscally constrained. Upon approval by the WATS MPO, the TIP is forwarded to PennDOT and FHWA / FTA for final approval. Modifications or formal amendments to the TIP can be considered by the MPO at any time. The MPO has adopted TIP Administrative Procedures to process TIP modifications and formal amendments.

Because the WATS MPO utilizes federal funds to plan and implement transportation projects, the MPO is responsible for undertaking analysis of federally funded projects listed within the LRTP and TIP. The WATS MPO TIP includes a full treatment of how WATS will study and address environmental justice concerns within the transportation planning and programming process. WATS MPO conducts environmental justice benefits and burdens analysis as needed. The outcome of this analysis is used to inform the Public Participation process for the WATS MPO.

The TIP is updated every 2 years. As TIP updates and the EJ benefits and burdens analyses are performed the WATS MPO will ensure the full and fair participation by all potentially affected communities in the transportation decision-making process, and seek public input early and often during TIP development. This includes multiple opportunities for public comment/participation during the 30-day public comment period. In addition, the WATS MPO coordinates with tribal nations that once had a presence in Lycoming County for review of the TIP as part of the 30-day public comment period. A Summary of Public Comments will be included in the final TIP showing analysis and disposition of public comments

Examples of public comment/participation opportunities include Lycoming County Commissioner meetings, Lycoming County Planning Commission meetings, social media notices, WATS MPO meetings, accessing the draft TIP from the [WATS MPO website](#), accessing the draft TIP print copies available at the WATS MPO office, and by contacting the WATS MPO staff members directly.

Public Participation Plan (PPP)

The WATS MPO conducts updates to the Public Participation Plan as needed. As part of the update process the WATS MPO reviews the Environmental Justice Analysis of Benefits and Burdens, the Title VI Policy and Procedures, and the Limited English Proficiency Plan and makes changes as needed using the most current U.S. Census and other data. During the update process the WATS MPO will ensure the full and fair participation by all potentially affected communities in the transportation decision-making process, and seek public input early and often during PPP development. This includes

multiple opportunities for public comment /participation during the 45-day public comment period. A Summary of Public Comments will be included in the final PPP showing analysis and disposition of public comments. Examples of public comment/participation opportunities include WATS MPO meetings, social media notices, accessing the draft PPP from the [WATS MPO website](#), accessing the draft PPP print copies available at the WATS MPO office, and by contacting the WATS MPO staff members directly with any comments.

Title VI Policy and Procedures

The Title VI Policies and Procedures are included in the PPP and are updated, as needed, during the Public Participation Plan update. During this review, the WATS MPO utilizes the most current U.S. Census and other data.

By way of incorporating the Title VI Policy and Procedures into the PPP during the update process, the WATS MPO ensures the full and fair participation by all potentially affected communities in the transportation decision-making process. This includes multiple opportunities for public comment /participation during the 45-day public comment period. Examples of public comment/participation opportunities include WATS MPO meetings, social media notices, targeted public outreach events, accessing the draft PPP from the [WATS MPO website](#), accessing the draft PPP print copies available at the WATS MPO office, and by contacting the WATS MPO staff members directly with any comments.

Limited English Proficiency Plan (LEP Plan)

Because the WATS MPO utilizes federal funds to plan and implement transportation projects, the MPO is responsible for improving meaningful access to the MPO programs, activities, and opportunities for public participation to persons with Limited English Proficiency. The LEP Plan is included in the PPP and is updated, as needed, during the Public Participation Plan update.

By way of incorporating the Limited English Proficiency Plan into the PPP during the update process, the WATS MPO ensures the full and fair participation by all potentially affected communities in the transportation decision-making process. This includes multiple opportunities for public comment /participation during the 45-day public comment period. Examples of public comment/participation opportunities include WATS MPO meetings, social media notices, targeted public outreach events, by posting the draft PPP on the [WATS MPO website](#), accessing the draft PPP print copies available at the WATS MPO office, and by contacting the WATS MPO staff members directly with any comments.

Coordinated Public Transit Plan

Federal transit law requires that projects selected for funding under the Enhanced Mobility for Individuals and Individuals with Disabilities (Section 5310) Program be *"included in a locally developed, coordinated public transit-human services transportation plan,"* and that the plan be *"developed and approved through a process that included participation by seniors, individuals with disabilities, representatives of public, private, and nonprofit transportation and human services providers and other members of the public"* utilizing

transportation services. The WATS MPO collaborates with the Susquehanna Economic Development Association (SEDA) Council of Governments (COG) for the Coordinated Public Transit Plan. These coordinated plans identify the transportation needs of individuals with disabilities, older adults, and people with low incomes, provide strategies for meeting these needs, and prioritize transportation services for funding and implementation.

Updates to the Coordinated Public Transit Plan are performed as needed. As updates occur, the WATS MPO and SEDA COG will ensure the full and fair participation by all potentially affected communities in the transportation decision-making process by providing opportunities for public comment/participation throughout the development process. Examples of public comment/participation opportunities include SEDA-COG meetings, WATS MPO meetings, social media notices, targeted public outreach events (Listening Sessions, etc.), accessing the draft Coordinated Public Transit Plan from the [WATS MPO website](#) and the [SEDA-COG website](#), accessing the draft Coordinated Public Transit Plan print copies available at the WATS MPO office and SEDA-COG office, and by contacting the WATS MPO staff members directly with any comments. On November 18 2019, the WATS MPO adopted the 2019 update to the joint Coordinated Public Transit-Human Services Transportation Plan.

Local Technical Assistance Program (LTAP) Annual Report

The WATS MPO has collaborated with PennDOT since 2005 to assist in delivery of the LTAP program. The contracting mechanism for the MPO involvement is by inclusion of a task in the WATS Unified Planning Work Program. As a part of the delivery of the LTAP program, WATS MPO produces an annual report of LTAP activity in the prior year.

The WATS MPO will ensure the full and fair participation by all potentially affected communities in the transportation decision-making process. This includes opportunities for public comment. Examples of public comment opportunities include the ability for the public to comment/ask questions regarding the report by presenting the LTAP Annual Report at WATS MPO meetings, posting the Annual Report on the [WATS MPO LTAP website](#), accessing the Annual Report print copies available at the WATS MPO office, or by contacting MPO staff members directly with any comments.

Annual List of Federally Obligated Projects

As a requirement of the Fixing America's Surface Transportation (FAST Act) legislation, MPOs are required to prepare an annual report that lists and summarizes all projects for which funding has been obligated during the prior Federal Fiscal Year (ending September 30). This report must be completed within 90-days of the end of the Federal Fiscal Year and is made available to the public.

The Federal Highways Administration (FHWA) defines "obligated" as "the Federal government's promise to pay a State for the Federal share of a project's eligible cost." Funding can also be "de-obligated" in response to lower than expected costs, project cancellation, or other factors, and these released funds are frequently redirected to other projects.

The WATS MPO will ensure the full and fair participation by all potentially affected communities in the transportation decision-making process. This includes opportunities for public comment. Examples of public comment opportunities include the ability for the public to comment/ask questions regarding the report by presenting the Annual List at WATS MPO meetings, posting the Annual List on the [WATS-MPO website](#), accessing the Annual List print copies available at the WATS MPO office, or by contacting MPO staff members directly with any comments.

WATS MPO Annual Report

Each year in the spring, the WATS MPO produces an annual report of activity in the previous calendar year. The annual report includes involvement in major projects, milestones reached in major planning deliverables, any staffing changes, and financial information related to the work program. Also included are summaries of status, trends, and progress related to performance measures on the WATS MPO transportation system.

The WATS MPO will ensure the full and fair participation by all potentially affected communities in the transportation decision-making process. This includes opportunities for public comment. Examples of public comment opportunities include the ability for the public to comment/ask questions regarding the annual report by presenting the WATS MPO Annual Report at WATS MPO meetings, posting the Annual Report on the [WATS-MPO website](#), accessing the Annual Report print copies available at the WATS MPO office, or by contacting MPO staff members directly with any comments.

Chapter 4 – Compliance with State and Federal Requirements

WATS Public Outreach Techniques

The Lycoming County Planning Commission utilizes a variety of public outreach techniques to encourage public participation in the development of WATS programs, including the Long Range Transportation Plan and Transportation Improvement Program, and other products previously stated. These outreach techniques are summarized below.

Public Participation Element	Outreach Technique
WATS Documents Availability	LCPC Office, Interested Party mailings, WATS-MPO website
Comment Opportunities	Public meetings, written comments (email or hardcopy)
Public Meeting	Hold minimum of 1 public meeting during public comment period and 1 public meeting at plan adoption stage
Public Comment Period Notice	Publish legal notice at least 30 calendar days prior to TIP public comment period ending and 45 calendar days for Long Range Transportation Plan ending (appearing in the Williamsport Sun Gazette minimum of 3 times)
Public Meeting Notice	Publish legal notice at least 7 calendar days prior to public meeting (appearing in Williamsport Sun Gazette)
Public Comment Summary	Prepare a summary of comments received (during public comment period) and incorporate public comments into products.
Visualization Techniques	Where appropriate, make use of Geographic Information System (GIS) to develop maps, charts, figures, presentations, public displays, and annual reports for outreach
Social Media	Public announcements and updates on major activities will be posted to WATS MPO Facebook, YouTube, Linked In, Twitter, and Instagram accounts. The WATS MPO utilizes the Facebook, Twitter, and Instagram accounts to profile local transportation projects and updates on ongoing projects, inform public of WATS MPO Technical and Coordinating Committee meeting dates/times/locations, and inform the public of emergency alerts authored by PennDOT and other sources. The MPO utilizes the Linked In account to connect with potential engineering/contracting firms for projects.

WATS MPO General Public Participation Procedures

To ensure the full and fair public participation in the transportation decision-making process the WATS MPO implements the following general procedures for public comment/participation.

Public Meetings

- All WATS MPO meetings are publicly advertised in the Williamsport Sun Gazette at least 7 days prior to the meeting and are open to the public. Agendas for the meetings are available at the meetings, and are posted on the [WATS MPO website](#) prior to all meetings.
- Minutes of all WATS public meetings are prepared by LCPC staff and are posted on the [WATS MPO website](#), after WATS approval at their public meeting and copies are publicly available from the LCPC office upon request.

- All WATS public meetings are typically held at the Lycoming County Executive Plaza Building, 330 Pine St., Williamsport, PA 17701. In instances where the Executive Plaza Building is unavailable, the secondary meeting location is the Michael Ross Event Center in the Trade and Transit Centre II Building, located at 144 W 3rd. St. Williamsport, PA 17701. Both facilities are ADA compliant and accessible to public transportation provided by River Valley Transit, which operates a fully accessible fixed route transit fleet as well as ADA paratransit services subcontracted through a shared ride provider, STEP, Inc.

Unplanned/Short Notice Meeting Procedure

To ensure the full and fair public participation in the transportation decision-making process the WATS MPO implements the following procedure in the event of an unplanned or short notice meeting:

- In accordance with Section 3 of the WATS MPO Bylaws when formal actions need to be expedited without the opportunity to convene a public meeting, an electronic mail ballot and/or phone ballot may be conducted in accordance with the WATS MPO approved Public Participation Plan.
 - The Lycoming County Planning and Community Development Department staff will determine the appropriateness of the voting technique used to poll WATS voting members.
 - The result of the vote will not be considered valid until a voting majority has been obtained.
 - All WATS voting members will be afforded five business days to review information provided and cast their vote.
 - The Lycoming County Planning and Community Department Staff will notify all WATS voting members of the result.
 - The voting action will be re-affirmed by vote at the next regularly scheduled WATS MPO public meeting.

Public Comment

- WATS MPO publishes a Public Comment Period Notice at least 30 calendar days prior to the TIP public comment period ending and 45 calendar days prior to the Long Range Transportation Plan ending (the notices appear in the Williamsport Sun Gazette a minimum of 3 times). All public comment period notices are posted on the [WATS MPO website](#), WATS MPO social media accounts, and along with a draft of the product for review
- WATS MPO will hold a minimum of one public meeting during the public comment period and one public meeting at the plan adoption stage.
- The WATS MPO accepts public comment on draft products at Lycoming County Commissioner meetings, Lycoming County Planning Commission meetings, social media notices, WATS MPO meetings, accessing the draft product from the [WATS MPO website](#), accessing the draft print copies available at the WATS MPO office, and by contacting the WATS MPO staff members directly.

- After the public comment period has ended, the WATS MPO staff will prepare a summary of all comments received, how those comments were addressed, and incorporate the public comments into products.

Outreach and Visualization Techniques

- The WATS MPO, where appropriate, makes use of Geographic Information System (GIS) to develop maps, charts, figures, presentations, public displays, and annual reports for outreach.
- The WATS MPO posts public announcements to profile local transportation projects, updates to ongoing projects, inform the public of MPO Technical and Coordinating Committee meetings, dates, times, locations, public comment period notices, and updates on other major activities to the [WATS MPO website](#), and the MPO Facebook, Twitter, and Instagram accounts.
- The WATS MPO utilizes targeted public outreach events/activities as needed when for projects/products
- All public information requests for WATS MPO produced documents are handled directly either by the Lycoming County Planning Department Staff or by the Lycoming County Director of Administration, who is the Lycoming County Right to Know Public Information Officer. All requests are handled in a manner that complies with state law.

Public Participation Plan Requirements

Compliance with PA Sunshine Law

In order to ensure the full and fair participation by all potentially affected communities in the transportation decision-making process and comply with the [Commonwealth of Pennsylvania Sunshine Law](#), the WATS MPO utilizes the [general procedures](#) previously outlined. Whereby all WATS MPO public meetings are publicly advertised in the Williamsport Sun Gazette at least 7 days prior to the meeting and are open to the general public, agendas for the meetings are available at the meeting and are posted on the [WATS MPO website](#) prior to all meetings. Public information requests for WATS produced documents are handled directly either by the Lycoming County Planning Department Staff or by the Lycoming County Director of Administration, who is the Lycoming County Right to Know Public Information Officer. All requests are handled in a manner that complies with state law. Minutes of all WATS public meetings are prepared by LCPC staff and are posted on the [WATS MPO website](#), after WATS approval at their public meeting and copies are publicly available from the LCPC office upon request.

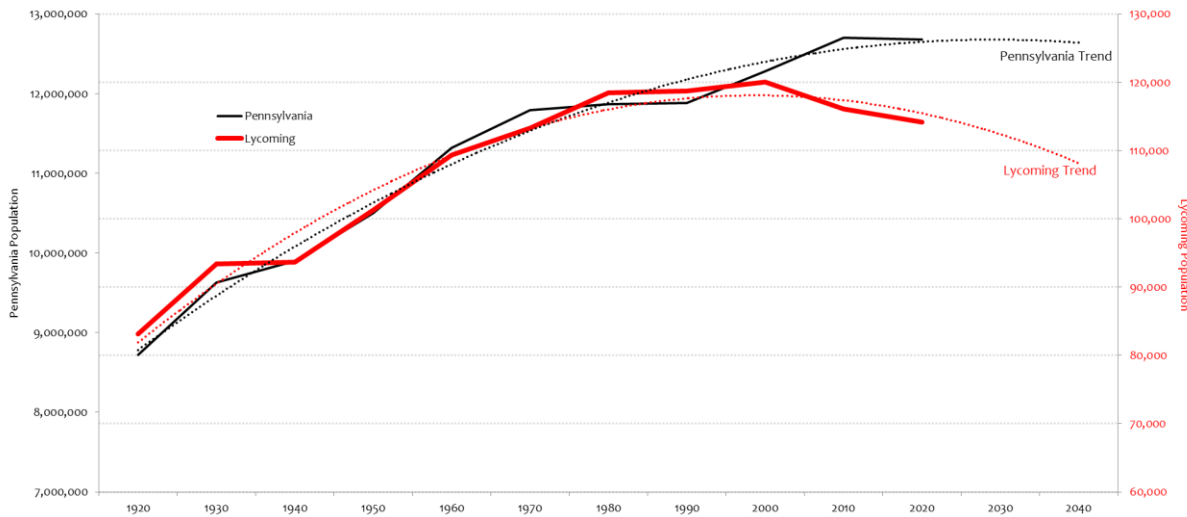
Compliance with Federal Government Requirements

The WATS MPO initially developed a Public Participation Plan in 1994 with subsequent plan updates since that time to ensure compliance with [Federal Public Participation Requirements](#) and to respond to changing demographics and emerging new technologies that have become available to the WATS MPO to improve public outreach techniques. The WATS MPO Public Participation Plan update provides a demographic overview of

Lycoming County based on U.S. Bureau of Census American Community Survey information.

Population Trends

According to the U.S. Bureau of Census American Community Survey Population Estimate figures, there is an estimate of 115,398 persons residing in Lycoming County. Up to and including the 2000 Census, the population of Lycoming County was steadily growing. From 1970 to 2000, Lycoming County’s population grew by 6,748 persons (a 6% overall gain) which was higher than Pennsylvania’s overall population growth at 4.1%. However, based on the 2010 Census count of population and annual American Community Survey (ACS) estimates for the county’s population, the population of Lycoming County peaked sometime in the late 1990s and has begun to decline. Projecting the 100-year population trend forward for Lycoming County suggests that within the 20-year planning horizon of this long-range plan the population of Lycoming County will be at a similar level to what it was in the late 1960s.



Population change trends for Lycoming County and Pennsylvania

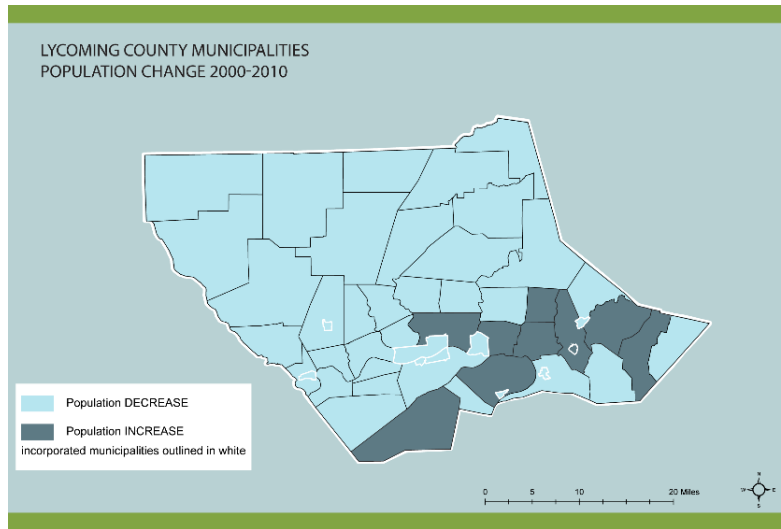
Similar to statewide trends, Lycoming County population has been shifting outward from the City and Boroughs (incorporated municipalities) into the suburban and rural Townships. Municipalities that have seen population growth are mostly rural Townships located generally along the I-180 corridor between Williamsport and the Borough of Muncy. Within this general area of the county, the Townships of Wolf, Mill Creek, Fairfield and Penn each realized population growth over 5%. Muncy Township and Loyalsock Township each grew by 3% and 1.5% respectively. Meanwhile, the incorporated municipalities within this same area saw large population declines:

Picture Rocks: -2%
 Montoursville: -3.4%
 Hughesville: -4%
 Williamsport: -4.3%
 Muncy: -7%

Collectively, these 5 municipalities lost 1,780 people between the 2000 and 2010 census, 1.5% of the total county population in 2000.

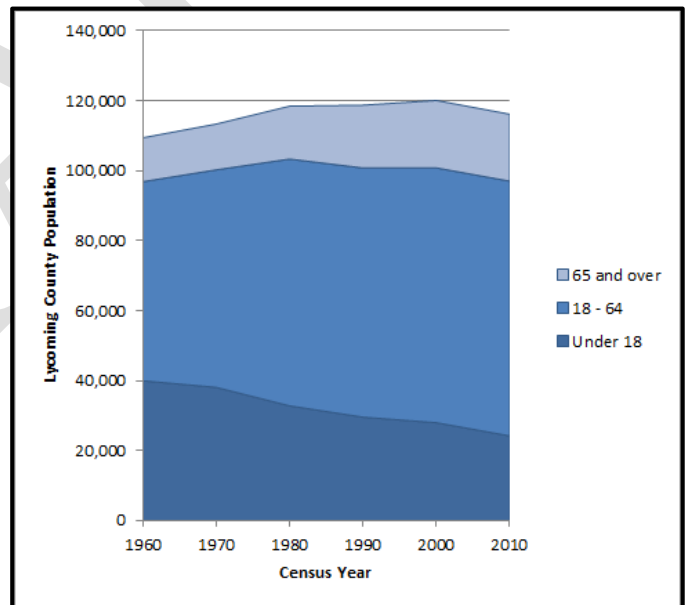
Meanwhile, even larger percentage decreases in population occurred in the central and northern parts of the county. The Townships of Old Lycoming, Pine, Plunketts Creek, Gamble, Lewis, Brown, McNett

and Cummings each saw population decrease by over 10% from the 2000 to the 2010 census.

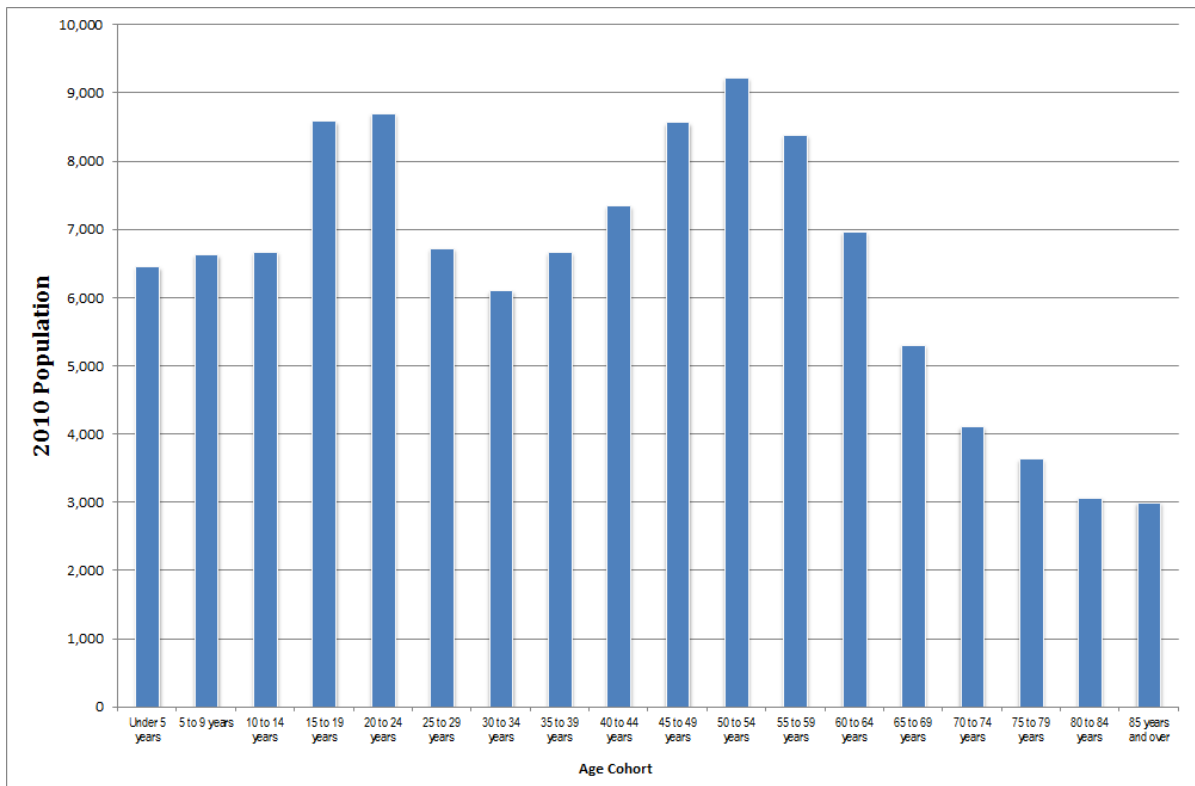


Population by Age Group

The population of Lycoming County is also becoming older on average. However, the largest driver of this trend is not an increase of people over the age of 65 but instead a diminishing proportion of the population under the age of 18. The youth population of the county has seen a steady linear decrease over the 50 year period from 1960-2010. From 1960 to 2010, the proportion of the population in Lycoming County under the age of 18 decreased from 37% to 21%. This was a numerical decrease of nearly 16,000 from a high of nearly 40,000 in 1960 to just 24,000 in 2010. Meanwhile, the proportion of the population aged 65 or over has increased from 11% to 16%. This was a numerical increase of less than 7,000 from about 12,500 in 1960 to just over 19,000 in 2010.



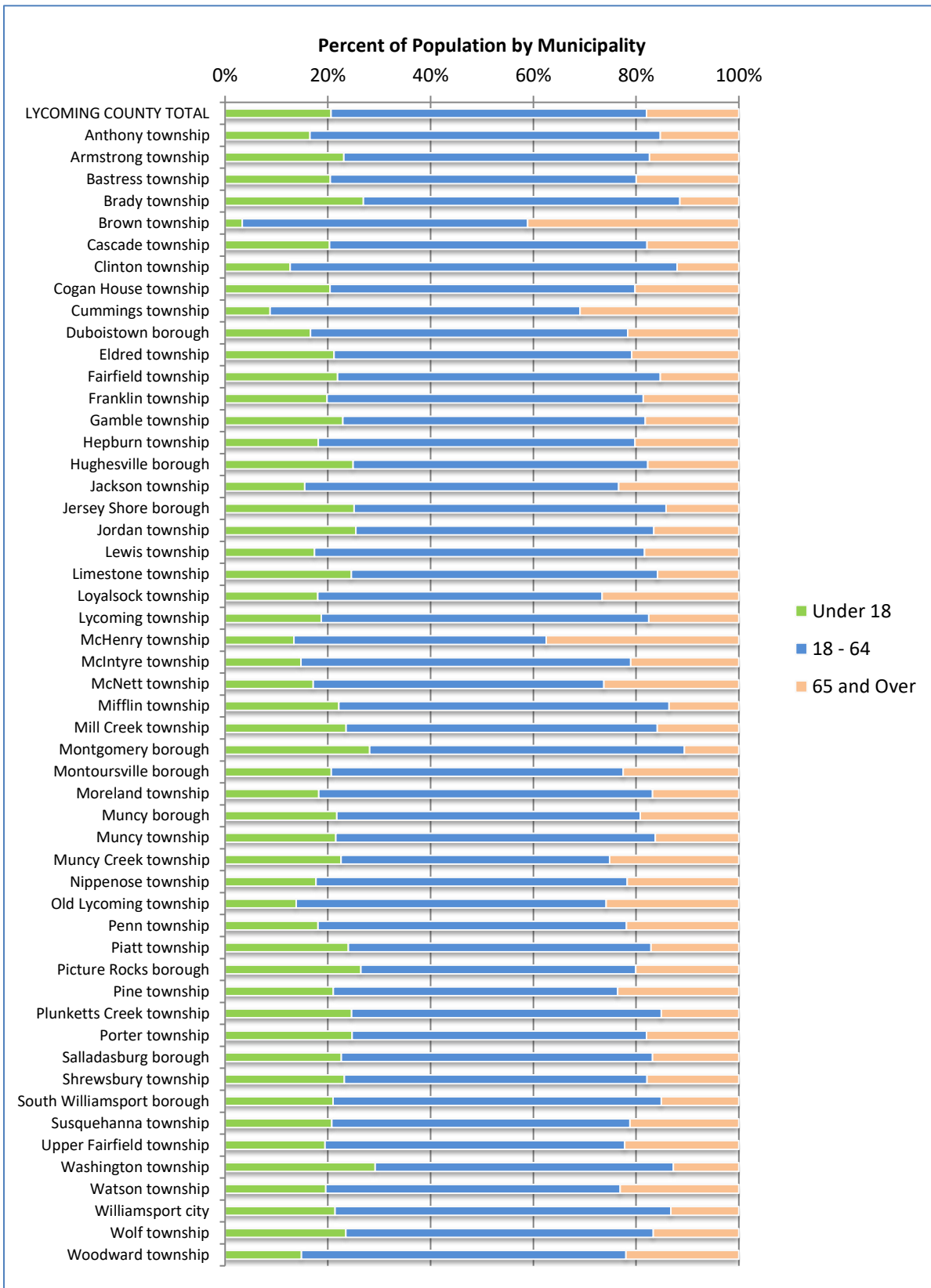
Looking at the breakdown of the population in 2010 based on age reveals another trend greatly influencing the current population composition and future demographics of Lycoming County. Currently, the largest age cohort in Lycoming County is individuals aged 50-54.



In addition, individuals aged 45-49 and aged 55-59 make up a large proportion of the population. Our large (2,211 in the 2010 census) college student population buoys the numbers of those aged 15-24 in the county. Over the lifespan of this plan, with a 20-year planning horizon, the largest age group within the county (those aged 45-59 in 2010, 22% of the total population) will enter their retirement years and then begin to decline in numbers due to mortality. Without an influx of population from outside of the county or a drastic increase in birth rates, Lycoming County is likely to see a dramatic decline in population between the years 2018 and 2038.

The chart below shows the percent of population by age group breakdown for the Lycoming County total and per municipality for the *under 18*, *18-64*, and *65 and over* age groups.

Williamsport Area Transportation Study Metropolitan Planning Organization
Public Participation Plan



In terms of a future countywide total population forecast, the Lycoming County Comprehensive Plan Update anticipates total population to decrease to 112,000 persons by 2020 with a further decrease to 106,000 persons by 2030, which is the new County Comprehensive Plan Update horizon year. A hypothesized reason for this decrease is attributed to “brain drain” trends where younger people going to colleges and universities elsewhere do not return to Lycoming County for employment once students graduate.

Environmental Justice Plan

Identification of Environmental Justice Populations

Presidential Executive Order 12898 states that “each Federal agency shall make achieving environmental justice part of its mission by identifying and addressing, as appropriate, disproportionately high and adverse human health or environmental effects of its programs, policies, and activities on minority populations and low-income populations.” Because the WATS MPO is responsible for allocating federal funds, the MPO is required to consider Environmental Justice (EJ). Within the transportation field, environmental justice is guided by three core principles:

- To avoid, minimize, or mitigate disproportionately high and adverse human health and environmental effects, including social and economic effects, on minority populations and low-income populations.
- To ensure the full and fair participation by all potentially affected communities in the transportation decision-making process.
- To prevent the denial of, reduction in, or significant delay in the receipt of benefits by minority and low-income populations.

The WATS MPO meets these requirements by providing data and mapping of Lycoming County environmental justice population areas utilizing U.S Bureau of Census information, along with analysis of proposed transportation project impacts related to environmental justice populations in the LRTP. The WATS MPO uses the FHWA and FTA joint guidance issued to the MPOs and RPOs of Pennsylvania, when performing equity analysis by incorporating the following “core elements”:

1. Identify environmental justice populations
2. Assess conditions and identify needs
3. Evaluate burdens and benefits
4. Identify and address disproportionate and adverse impacts and inform future planning efforts

Identification of traditionally underserved and underrepresented populations

Executive Order 12898 specifies that *minority* and *low-income* populations must be considered in Environmental Justice analysis and these populations were identified using data from the U.S. Bureau of Census 2010 Decennial Census and the American Community Survey, (ACS). The following definitions are used for the purposes of this analysis:

- **Minority:** Individuals who are:
 - Black or African American,
 - Hispanic or Latino,
 - Asian American,
 - American Indian/ Native American or Alaskan Native
 - Native Hawaiian and Other Pacific Islander
 - Two or more races

- **Low-income:** Person whose median household income is at or below the U.S. Department of Health and Human Services poverty guidelines.

A complete list of definitions for these categories is found in [Appendix D Glossary](#) at the end of this document.

To ensure the full and fair participation by all potentially affected communities in the transportation decision making process, the WATS MPO, as part of the preliminary design phase of proposed projects, coordinates with PennDOT and consultant teams to avoid, minimize, and mitigate adverse impacts environmental justice populations. These efforts are documented in the environmental clearance documents for each project.

For other transportation projects, which are advancing from the WATS Long Range Transportation Plan for programming on the WATS Transportation Improvement Program preliminary design phase, WATS will work with PennDOT and other project sponsors to identify the environmental justice populations and evaluate direct and indirect impacts of the projects on these populations. For projects that have advanced beyond preliminary design phase, WATS, PennDOT and other project sponsors will work to avoid, minimize and mitigate adverse impacts to environmental justice populations. Again, these efforts are documented in the appropriate environmental clearance documents for the projects.

In terms of transit, it should be recognized that WATS, River Valley Transit and STEP, Inc. actively solicit input from environmental justice populations through the WATS Transit Advisory Committee that includes numerous social service organizations providing programs and services supporting the transportation needs of such populations. RVT and STEP continually attempt to improve public transit service to key growth areas, which include subject populations.

On November 18, 2019, the WATS MPO adopted an update to its Coordinated Public Transit-Human Services Transportation Plan in conjunction with the SEDA-COG MPO. This plan helps guide the distribution of federal funds from certain transit programs that serve low-income, minority, persons with disabilities, and the elderly population. A large number of stakeholders provided input about this Coordinated Plan, including many stakeholders that directly or indirectly represent environmental justice populations of concern.

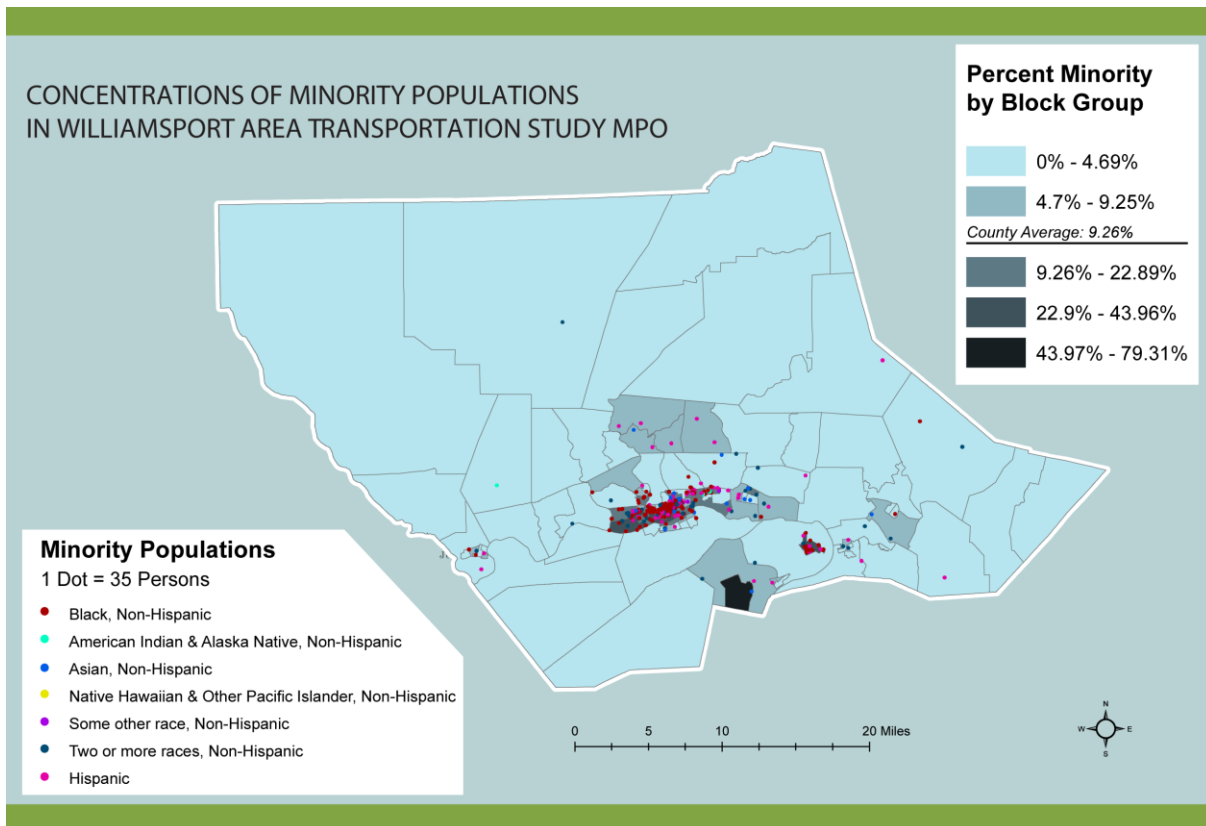
Identification of Minority Populations

According to the ACS, there are 10,686 persons in Lycoming County for whom minority status has been determined. This represents 9.26% of the Lycoming County total population (2013-2017 ACS Demographic Indicator data). The US. Bureau of Census 2017 American Community Survey Population Estimates information on minority composition is provided on the following table (*It should be noted that Hispanic or Latino is an ethnicity, not a racial category contained in Census data since persons of Hispanic origin can be of any race*):

RACE	2017 POPULATION	PERCENT SHARE
White	106,211	92.0%
Black or African American	5,711	4.9%
American Indian and Alaska Native	173	0.2%
Asian	704	0.6%
Native Hawaiian and other Pacific Islander	12	0.0%
Some other Race	523	0.5%
Two or More Races	2,062	1.8%
Totals	115,398	100.0%

There are 2,204 persons of Hispanic or Latino minority ethnicity, which represent 1.9% of Lycoming County's population according to the 2017 American Community Survey Population Estimates data, which is considerably lower than the Statewide 6.8% Hispanic, or Latino minority population figure. As shown in the above statistics, the County's population racial composition is predominantly white, however 8.0% of the population is non-white, which is substantially lower than the 18.2 % statewide non-white population figure ([2013-2017 ACS Demographic Characteristics](#)).

The following map illustrates the minority population in Lycoming County by Census Block Group. It is noteworthy that minority populations in Lycoming County are not geographically distributed evenly and they are primarily concentrated in the Williamsport Urbanized Area.

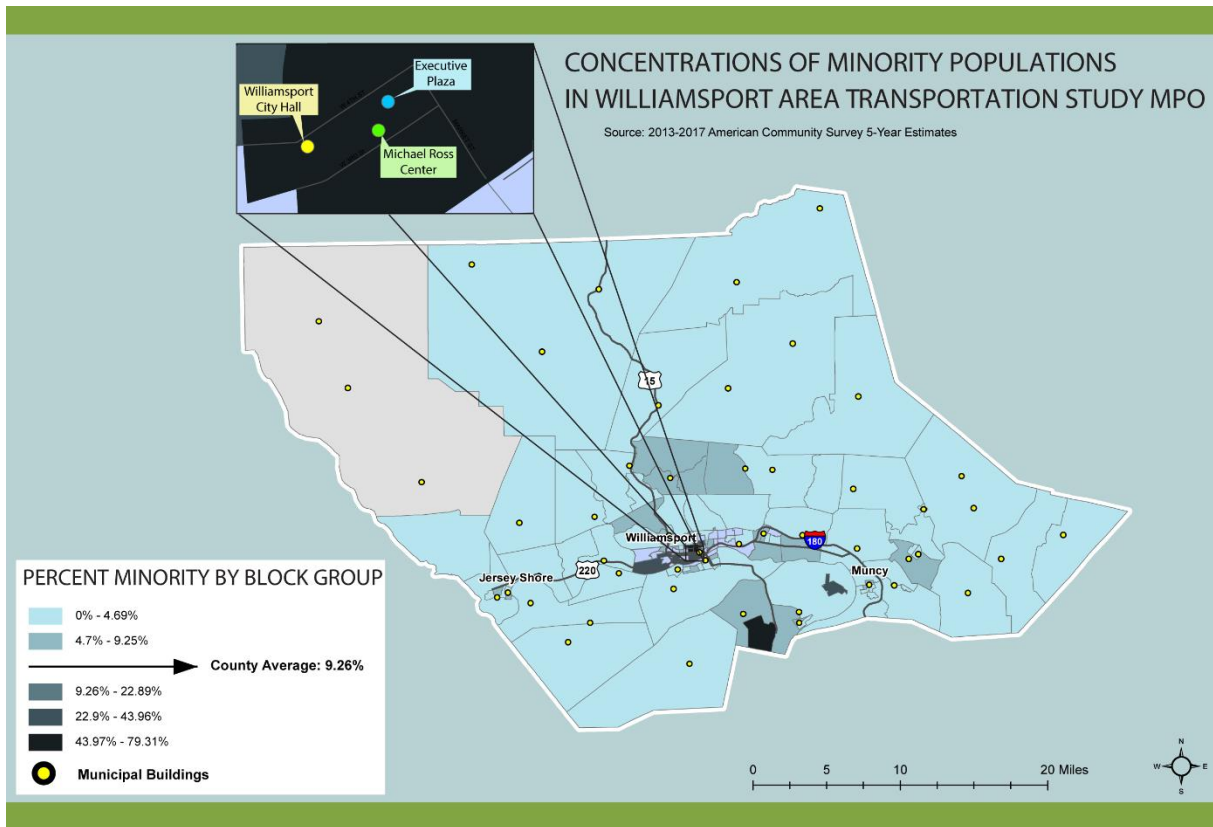


Disparities in Minority Populations Public Participation Process

During this Public Participation Plan update, the WATS MPO has not discovered any disparities for minority populations in the public participation process. However, the WATS MPO recognizes the need to continuously enhance public participation efforts. A more detailed description of future public participation efforts is found in the [Future Public Participation Plan Efforts and Evaluation Procedures](#) section. The WATS MPO will address any minority population special accommodation needs for public participation as requested and during product development.

Minority Populations Public Participation Techniques/Procedures

To ensure the full and fair participation by all potentially affected communities in the transportation decision-making process, the WATS MPO utilizes the public participation techniques and procedures outlined in the [WATS MPO General Public Participation Procedures](#). The WATS MPO meetings are typically held in Lycoming County Executive Plaza (see inset map below). In an effort to provide more opportunities for minority populations to participate in transportation decision-making processes, the WATS MPO may utilize other locations throughout the County such as the Michael Ross Event Center in Trade & Transit II and municipal offices. Furthermore, as projects are developed, additional public meeting locations may be utilized such as civic centers, non-profit centers, or religious facilities in order to increase access for the County's minority populations.

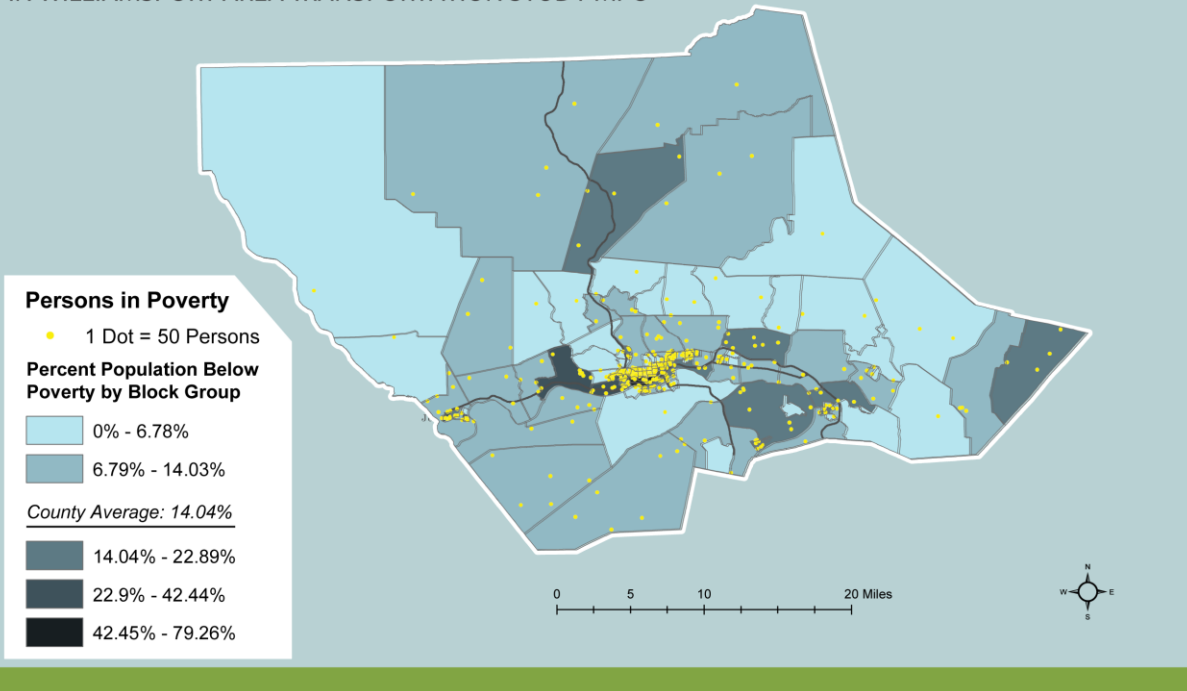


Identification of Low-income Population

- ❖ There are 109,487 persons in Lycoming County for whom low-income status can be determined. Of this number, 15,375 persons (14.0%) were determined to be falling below the poverty level, which is slightly higher than the Pennsylvania 12.5% poverty level figure ([2013-2017 ACS Poverty Status](#) and [Census Poverty data](#)).

The following map illustrates the low-income population in Lycoming County by Census Block Group. The low-income population in Lycoming County are not geographically distributed evenly. The largest portion of low-income population are primarily concentrated in the Williamsport Urbanized Area.

CONCENTRATIONS OF POVERTY
IN WILLIAMSPORT AREA TRANSPORTATION STUDY MPO

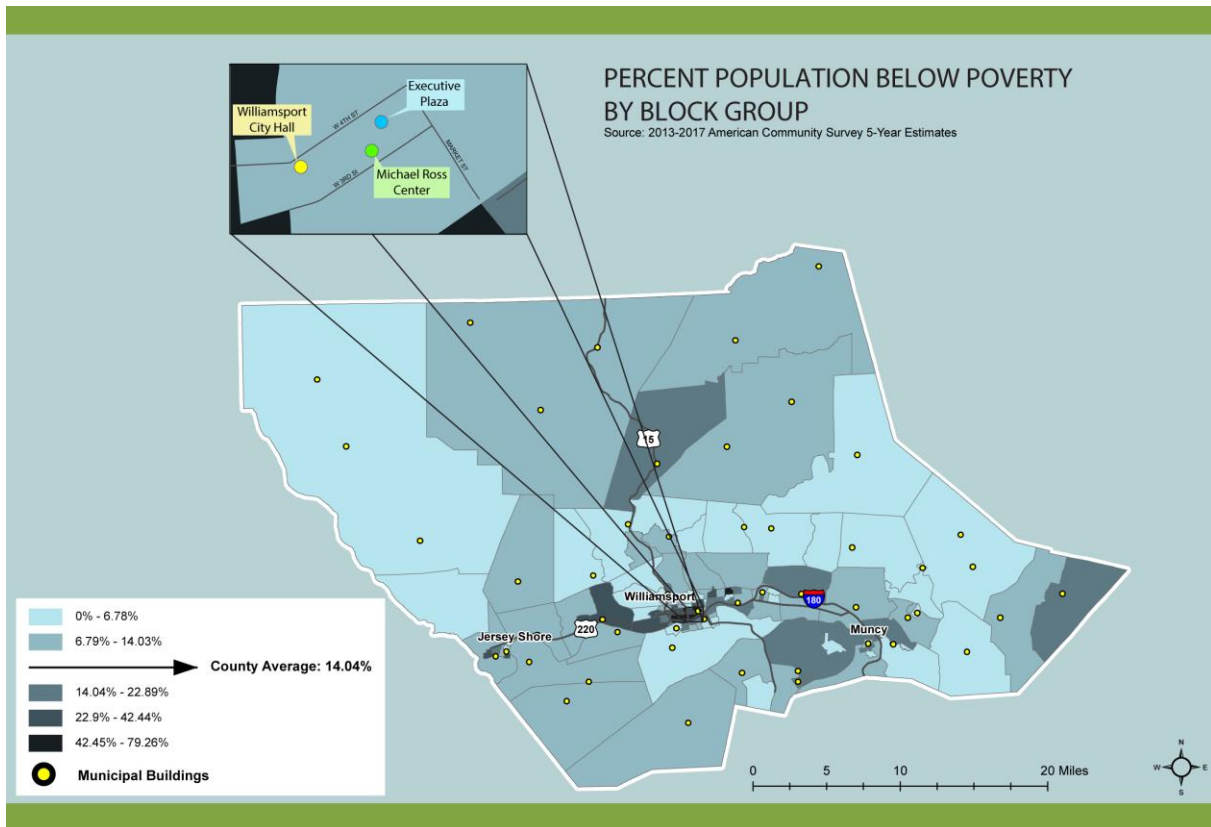


Disparities in Low-Income Population Public Participation Process

During this Public Participation Plan update, the WATS MPO has not discovered any disparities for low-income populations in the public participation process. However, the WATS MPO recognizes the need to continuously enhance public participation efforts. A more detailed description of future public participation efforts is found in the [Future Public Participation Plan Efforts and Evaluation Procedures](#) section. The WATS MPO will address any low-income population special accommodation needs for public participation as requested and during product development.

Low-Income Population Public Participation Techniques/Procedures

To ensure the full and fair participation by all potentially affected communities in the transportation decision-making process, the WATS MPO utilizes the public participation techniques and procedures outlined in the [WATS MPO General Public Participation Procedures](#). The WATS MPO meetings are typically held in Lycoming County Executive Plaza (see inset map below). In an effort to provide more opportunities for low-income populations to participate in transportation decision-making processes, the WATS MPO may utilize other locations throughout the County such as the Michael Ross Event Center in Trade & Transit II and municipal offices. Furthermore, as projects are developed, additional public meeting locations may be utilized such as civic centers, non-profit centers, or religious facilities in order to increase access for the County's low-income populations.



Environmental Justice Analysis

The WATS MPO will continue its targeted outreach efforts to ensure many opportunities for the full and fair participation by all potentially affected communities in the transportation decision-making process. The WATS MPO will seek input from environmental justice populations on all WATS proposed projects, especially regarding those projects situated within environmental justice population centers, which are primarily concentrated within the Williamsport Urbanized Area. The MPO will also continue to refine the locations of populations of concern (as additional ACS and Census information becomes available), to expand methods of analysis for determining benefits and burdens, and to implement techniques for informing and gathering public input from all citizens about future transportation projects.

Title VI Plan

To ensure the full and fair participation by all potentially affected communities in the transportation decision-making process, the WATS MPO is fully committed to ensuring compliance with [Title VI of the Civil Rights Act](#). As such, the WATS MPO does not discriminate on the grounds of race, color, or national origin in its programs or activities. Furthermore, the WATS MPO will not, directly or through contractual arrangements:

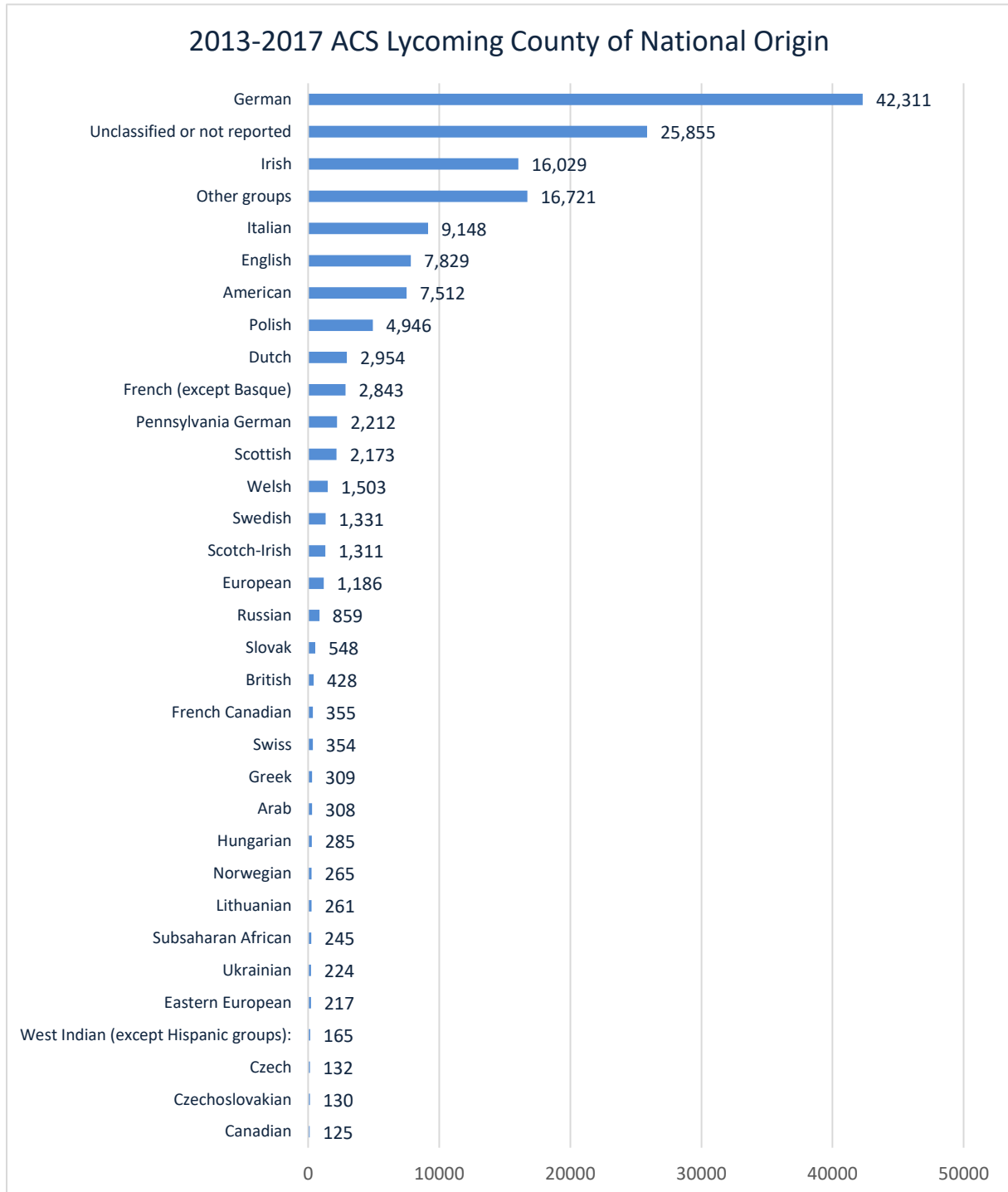
- Engage in intentional discrimination because of race, color, or national origin;

- Use criteria or methods of administration which have the effect of subjecting persons to discrimination because of their race, color, or national origin; or,
- Intimidate, threaten, coerce, or discriminate against any individual in retaliation for exercising a right or privilege.
- WATS MPO will include language in its public notices and advertisements relating to nondiscrimination and avenues of redress if an individual feels they have been discriminated against. All public meeting notices and advertisements shall state the following, ***“Under Title VI of the Civil Rights Act of 1964. If you feel you have been denied participation in, denied benefits of, been subject to discrimination in regard to this project development, or otherwise discriminated against because of race, ethnic or socioeconomic status you may contact John Lavelle, Transportation Supervisor, WATS MPO.”***

Identification of Title VI Populations

National Origin

The graph below shows the Lycoming County national origin breakdown for those who reported

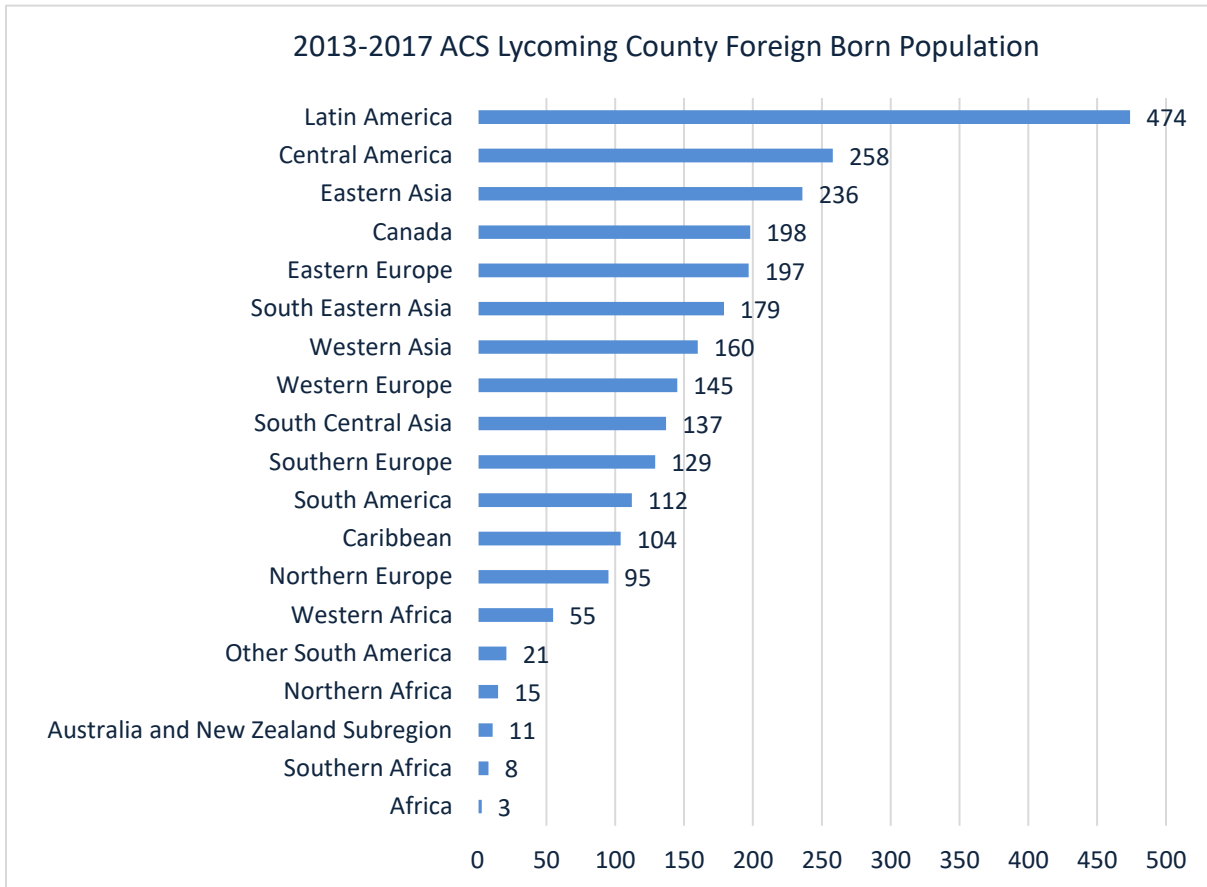


Due to 25,855 persons either not reporting ancestry or being labeled as unclassified, the US. Bureau of Census 2017 American Community Survey Population Estimates were only able to determine ancestry information for 89,543 persons in Lycoming County. From

those identified, German ranks as the highest ancestry in Lycoming County with 42,311 persons of German ancestry.

Foreign Born Population

The graph below shows US. Bureau of Census 2017 American Community Survey Population Estimates for Lycoming County. Latin America is the highest foreign-born place of birth in Lycoming County with 474 persons being born in Latin America.



Disparities in Title VI Populations Public Participation Process

During this Public Participation Plan update, the WATS MPO has not discovered any disparities for Title VI populations in the public participation process. However, the WATS MPO recognizes the need to continuously enhance public participation efforts. A more detailed description of future public participation efforts is found in the [Future Public Participation Plan Efforts and Evaluation Procedures](#) section. The WATS MPO will address any Title VI population special accommodation needs for public participation as requested and during product development.

Title VI Populations Public Participation Techniques/Procedures

To ensure the full and fair participation by all potentially affected communities in the transportation decision-making process, the WATS MPO utilizes the public participation techniques and procedures outlined in the [WATS MPO General Public Participation Procedures](#). The WATS MPO meetings are typically held in Lycoming County Executive Plaza (see inset map below). In an effort to provide more opportunities for Title VI populations to participate in transportation decision-making processes, the WATS MPO may utilize other locations throughout the County such as the Michael Ross Event Center in Trade & Transit II and municipal offices. Furthermore, as projects are developed, additional public meeting locations may be utilized such as civic centers, non-profit centers, or religious facilities in order to increase access for the County's Title VI populations.

WATS MPO Title VI Complaint Procedure

All complaints that allege exclusion from participation in, denial of benefits, or discrimination on the grounds of race, color, national origin from a program, service, or activity administered by the WATS MPO shall be forwarded to the WATS MPO Title VI Coordinator for intake and disposition. These complaints will be reviewed and acted upon consistent with the WATS MPO Title VI complaint procedure, which was adopted at the WATS MPO July 23, 2012 public meeting. Any Title VI Complaints should be directed to:

John Lavelle
Transportation Supervisor
Lycoming County Planning & Community Development
48 West Third Street
Williamsport, PA 17701
Phone: (570) 320-2138
Email: jlavelle@lyco.org

An example of the *WATS MPO Title VI Complaint Form* can be found in [Appendix C WATS MPO Title VI Complaint Form](#) of the Public Participation Plan. All WATS public meeting notices indicate the procedures for filing a Title VI complaint. To date, the WATS MPO has not received any complaints under Title VI associated with development of this plan or other WATS MPO functions.

Americans with Disabilities Act Plan

The Americans with Disabilities Act of 1990 (ADA) “*prohibits discrimination on the basis of disability by public entities in services, programs, and activities. Public entities are required to make programs accessible to individuals with disabilities including conducting meetings and hearings in ADA-compliant buildings. Special accommodations must be provided to ensure communications are equally effective for persons with disabilities in order to participate in meetings, planning and programming activities.*” With advance notice, special provisions must be made to accommodate hearing-impaired or visually impaired participants.

To ensure the full and fair participation by all potentially affected communities in the transportation decision-making process, the WATS MPO is fully committed to ensuring compliance with the [Americans with Disabilities Act of 1990 \(ADA\)](#). The WATS MPO complies with Title II of the American with Disabilities Act of 1990 (ADA), Section 504 of the Rehabilitation Act of 1973, and the Pennsylvania Human Relations Act of 199 by:

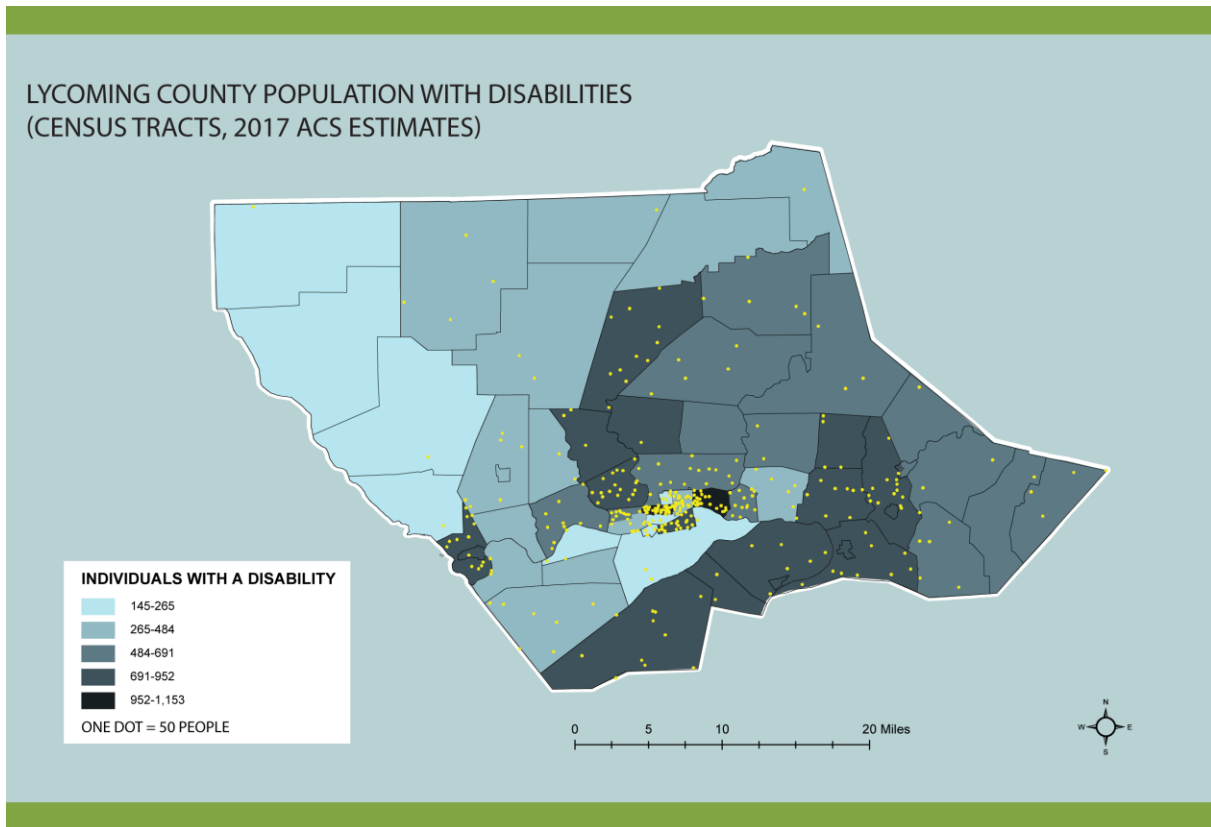
- WATS MPO Technical Committee and Coordinating Committee meetings are typically held at the Lycoming County Executive Plaza Building, 330 Pine St., Williamsport, PA 17701. In instances where the Executive Plaza Building is unavailable, the secondary meeting location is the Michael Ross Event Center in the Trade and Transit Centre II Building, located at 144 W 3rd. St. Williamsport, PA 17701. Both facilities are ADA compliant and accessible to public transportation provided by River Valley Transit, which operates a fully accessible fixed route transit fleet as well as ADA paratransit services subcontracted through a shared ride provider, STEP, Inc.
- All public notices published by WATS indicate that special ADA accommodations can be provided with advance notification to the Lycoming County Planning Commission. All public meeting notices and advertisements shall state the following, ***“If you require special assistance to attend or participate in this meeting or need additional information please contact the WATS MPO representative noted below, five days prior to the meeting event so that the special assistance can be accommodated.”***
- The WATS Transit Advisory Committee includes representation by community organizations that serve persons with disabilities, transit consumers, and public transportation providers.
- Identify alternative ADA compliant meeting sites, such as churches, schools, public libraries, and senior centers to reach traditionally underserved populations.

All public meetings associated with development of the 2018-2038 Long Range Transportation Plan were held at the ADA accessible Lycoming County Executive Plaza meeting location.

Identification of Disabled Population

In terms of the total Civilian Non-institutionalized population of Lycoming County, there are 112,226 persons residing in the County, where 17,314 persons (15.4%) have a physical or mental disability. The 65 years and over age group of this population grouping total 19,697 persons with 7,428 persons (37.7%) having a physical or mental disability. Lycoming County population disability percentages are slightly higher than the statewide disability percentages at 13.7% total disability and 34.3% over age 65 with disability figures ([2013-2017 ACS Social Characteristics data](#)). The map below shows the concentration of disability populations within the WATS MPO.

The following map illustrates the disabled populations in Lycoming County by Census Block Group. The disabled populations in Lycoming County are distributed fairly evenly throughout the County.



Disparities in Disabled Populations Public Participation Process

During this Public Participation Plan update, the WATS MPO has not discovered any disparities for the disabled populations in the public participation process. However, the WATS MPO recognizes the need to continuously enhance public participation efforts. A more detailed description of future public participation efforts is found in the [Future Public Participation Plan Efforts and Evaluation Procedures](#) section. The WATS MPO will address any disabled population special accommodation needs for public participation as requested and during product development.

Disabled Population Techniques/Procedures

To ensure the full and fair participation by all potentially affected communities in the transportation decision-making process. The WATS MPO utilizes the public participation techniques and procedures outlined in the [WATS MPO General Public Participation Procedures](#). The WATS MPO meetings are typically held in Lycoming County Executive Plaza. In instances where the Executive Plaza Building is unavailable, the secondary meeting location is the Michael Ross Event Center in the Trade and Transit Centre II Building, located at 144 W 3rd. St. Williamsport, PA 17701. Both facilities are ADA

compliant and accessible to public transportation provided by River Valley Transit, which operates a fully accessible fixed route transit fleet as well as ADA paratransit services subcontracted through a shared ride provider, STEP, Inc.

In an effort to provide more opportunities for disabled populations to participate in transportation decision-making processes, the WATS MPO may utilize other locations throughout the County such as the Michael Ross Event Center in Trade & Transit II and municipal offices. Furthermore, as projects are developed, additional public meeting locations may be utilized such as civic centers, non-profit centers, or religious facilities in order to increase access for the County’s disabled populations. The WATS MPO will not place a surcharge on an individual with a disability to cover the costs of providing auxiliary aids/services or reasonable modifications of policy.

Limited English Proficiency, (LEP) Plan

The WATS MPO is fully committed to ensuring compliance with [Executive Order 13166](#) “Improving Access to Services for Persons with Limited English Proficiency, (LEP)” allowing for the full and fair participation by all potentially affected communities in the transportation decision-making process,

WATS MPO is committed to improving services to LEP individuals throughout Lycoming County. Review of the LEP and related outreach activities are conducted as needed during the Public Participation Plan update. Any improvements/changes to the LEP will be made based upon that review. Analysis of the languages spoken throughout Lycoming County’s census block groups can be seen in the charts/map below.

Lycoming County Limited English Proficiency (LEP) Profile

2013-2017 American Community Survey 5 Year Estimates

Estimated Total Population 5 Years Old And Over	108,962		
Estimated Population Speaking Only English Language	105,218		
	Total Number of People Speaking Language At Home	Number of People Speaking This Language At Home Who Speak English "Very Well"	Number of People Speaking This Language At Home Who Speak English "Less Than Very Well"
Spanish	1,408	1,037	371
French, Haitian, or Cajun	240	226	14
German or other West Germanic languages	882	645	237

Williamsport Area Transportation Study Metropolitan Planning Organization
Public Participation Plan

Russian, Polish, or other Slavic languages	184	121	63
Other Indo-European languages	324	267	57
Korean	25	23	2
Chinese (incl. Mandarin, Cantonese)	150	94	56
Vietnamese	43	3	40
Tagalog (incl. Filipino)	48	25	23
Other Asian and Pacific Island languages	154	90	64
Arabic	202	74	128
Other and unspecified languages	84	76	8
TOTAL	3,744	2,681	1,063

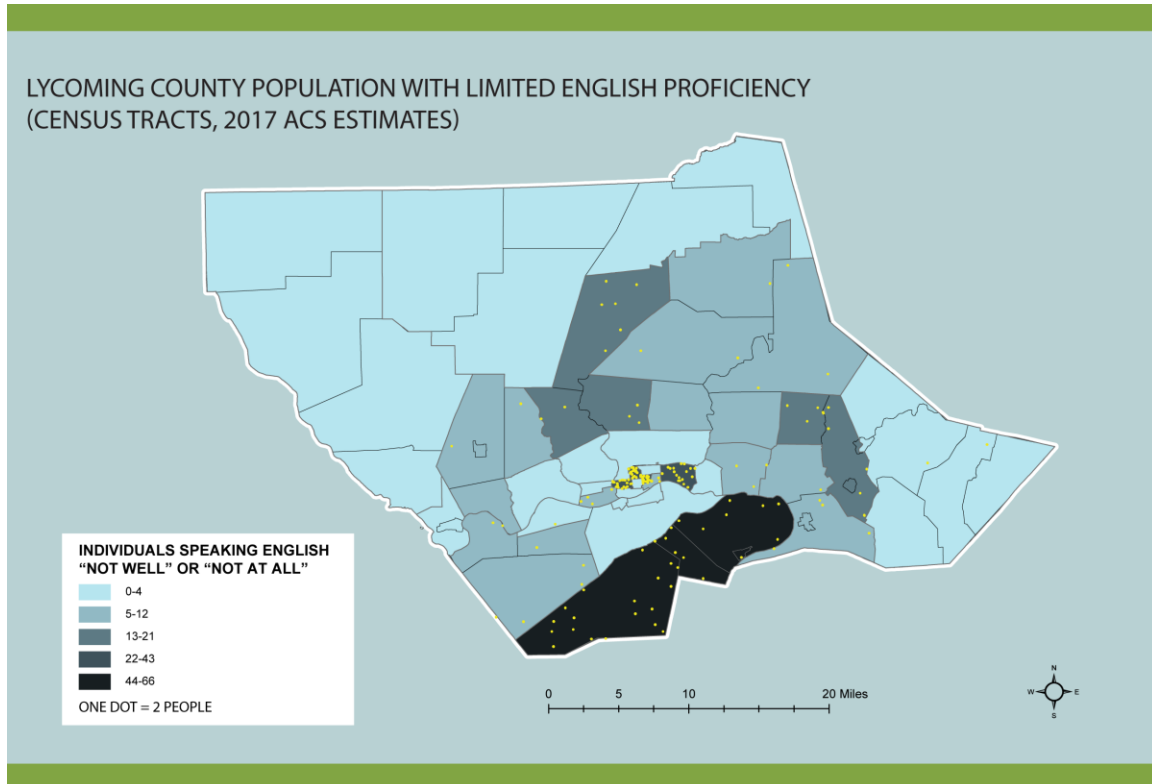
Source: [US Census American Community Survey 2013-2017 5-Year Estimates](#)

	Estimate	Margin of Error	Percent of Population
Number of Households	45,991	+/- 667	100%
Estimated Households Speaking Only English	43,995	+/- 687	95.6%
Estimated Households Speaking Spanish at Home:	658	+/- 157	1.4%
Limited English speaking household	48	+/- 53	0.1%
Not a limited English speaking household	610	+/- 141	1.3%
Estimated Households Speaking Other Indo-European languages at Home:	970	+/- 270	2.1%
Limited English speaking household	71	+/- 44	0.15%
Not a limited English speaking household	899	+/- 204	1.9%
Estimated Households Speaking Asian & Pacific Island languages at Home:	254	+/- 61	0.5%
Limited English speaking household	40	+/- 40	0.08%
Not a limited English speaking household	205	+/- 52	0.44%
Estimated Households Speaking Other Languages at Home:	114	+/- 80	0.2%
Limited English speaking household	58	+/- 74	0.1%
Not a limited English speaking household	56	+/- 33	0.1%

Source: [US Census American Community Survey 2013-2017 5-Year Estimates](#)

Identification of Limited English Proficiency Population

According to the American Community Survey 2013-2017 estimates, there are a total of 108,962 persons in Lycoming County aged five years and older. Of these, 1,063 persons (1%) speak a primary language at home other than English and Speak English less than very well. Lycoming County is lower than the statewide percent of 4.2% primary non-English speaking population and the national estimate of 8.5%. This LEP population breakdown for Lycoming County is illustrated below.



Disparities in LEP Population Public Participation Process

During this Public Participation Plan update, the WATS MPO has not discovered any disparities for Limited English Proficiency populations in the public participation process. However, the WATS MPO recognizes the need to continuously enhance public participation efforts. A more detailed description of future public participation efforts is found in the [Future Public Participation Plan Efforts and Evaluation Procedures](#) section. The WATS MPO will address any Limited English Proficiency population special accommodation needs for public participation as requested and during product development.

Limited English Proficiency Population Techniques/Procedures

To ensure the full and fair participation by all potentially affected communities in the transportation decision-making process, the WATS MPO utilizes the public participation techniques and procedures outlined in the [WATS MPO General Public Participation Procedures](#). The WATS MPO meetings are typically held in Lycoming County Executive Plaza (see inset map below). In an effort to provide more opportunities for Limited English Proficiency populations to participate in transportation decision-making processes, the WATS MPO may utilize other locations throughout the County such as the Michael Ross Event Center in Trade & Transit II and municipal offices. Furthermore, as projects are developed, additional public meeting locations may be utilized such as civic centers, non-profit centers, or religious facilities in order to increase access for the County's LEP populations. The WATS MPO complies with the Executive Order 13166, "Improving Access to Services for Persons with *Limited English Proficiency, (LEP)*" requirements by:

- Include in the WATS public meeting notices the availability of LEP language translation services upon advance notification (the WATS MPO has LEP translation service availability through a PennDOT partnership). Limited English Proficiency individuals, upon request, may have any publically available document that WATS MPO produces translated into other languages to facilitate public review.
- Include on all WATS MPO webpages a language translation option where LEP Individuals can select their most proficient language.
- Targeted public outreach events to venues frequented by LEP individuals (ex. Thrive International Programs).

Future Public Participation Plan Efforts and Evaluation Procedures

In order to ensure full and fair public participation in the transportation decision-making process the WATS MPO recognizes the need to continuously enhance public outreach efforts. To achieve these goals the WATS MPO will pursue the following activities:

- Review and evaluate the Public Participation Plan on a 2-year cycle prior to updating the Transportation Improvement Plan (TIP)
- As a component of the Public Participation Plan review/update the WATS MPO will also review/update the following plans:
 - Americans with Disabilities Act Plan
 - Environmental Justice Plan
 - Limited English Proficiency Plan
 - Title VI Plan
- Identify and consult with interested parties and stakeholders (continuing)
- Seek out Environmental Justice and Limited English Proficiency organizations, resources, and advocates throughout Lycoming County (continuing)

- Conduct review of ADA accessibility of meeting locations and website (continuing)
- Partner with disability advocates to ensure online products/documents are easier to access for the disabled population (continuing)
- Investigate the formation of a Citizens Advisory Committee to assist in public outreach and public participation (continuing)
- Periodically evaluate the opportunities and procedures for public participation including:
 - Review of public meeting attendance
 - The frequency and nature of public comments received on WATS planning documents, website and social media interaction
 - Any other comments or suggestions.

The findings will be incorporated as part of subsequent WATS Public Participation Plan updates and public involvement activities.

For questions regarding the WATS MPO Public Participation Plan, public participation opportunities, or accommodations please contact:

John Lavelle
Transportation Supervisor
Lycoming County Planning & Community Development
48 West Third Street
Williamsport, PA 17701
Phone: (570) 320-2138
Email: jlavelle@lyco.org

Appendix A: Glossary of Acronyms

Abbreviations of terms used in the Public Participation Plan are as follows:

A	AADT:	Annual Average Daily Traffic
	AASHTO:	American Association of State Highway & Transportation Officials
	ACM:	Agency Coordination Meeting
	ADA:	Americans with Disabilities Act of 1990
	ADT:	Average Daily Traffic
	ACS:	American Community Survey
	AIP:	Airport Improvement Program
	ALP:	Airport Layout Plan
	APA:	American Planning Association
	ARFF:	Aircraft Rescue and Firefighting
	ARLE:	Automated Red Light Enforcement
	ATCT:	Air Traffic Control Tower
B	BMP:	Best Management Practice
	BMS:	Bridge Management System
C	CBD:	Central Business District
	CCAP:	County Commissioners Association of Pennsylvania
	CFMP:	Comprehensive Freight Management Plan
	CMA:	Congestion Management Agency
	CMAQ:	Congestion Mitigation and Air Quality
	CMP:	Congestion Management Process
	CNG:	Compressed Natural Gas
	COFC:	Container on Flat Car
	CSVT:	Central Susquehanna Valley Transportation Project
D	DCED:	Department of Community and Economic Development
	DCNR:	Department of Conservation and Natural Resources
	DEP:	Department of Environmental Protection
	DOI:	Decade of Investment
	DVMT:	Daily Vehicle Miles Traveled
E	ECMS:	Engineering and Construction Management System
	EJ:	Environmental Justice
	EMC:	Emergency Management Coordinator
	ENS:	Emergency Notification System
	EOC:	Emergency Operations Center
	EOP:	Emergency Operations Plan
	EPA:	Environmental Protection Agency
F	FAA:	Federal Aviation Administration

Appendix A: Glossary of Acronyms

Abbreviations, continued

	FAST:	Fixing America's Surface Transportation Act
	FBO:	Fixed Base Operator
	FD:	Final Design
	FEMA:	Federal Emergency Management Agency
	FFY:	Federal Fiscal Year
	FHWA:	Federal Highways Administration
	FRA:	Federal Railroad Administration
	FTA:	Federal Transit Administration
G	GIS:	Geographic Information Systems
	GWA:	Greater Williamsport Alliance Planning Area
H	HAT:	Height Above Terrain
	HOP:	Highway Occupancy Permit
	HPMS:	Highway Performance Monitoring System
	HSIP:	Highway Safety Improvement Program
I	ILS:	Instrument Landing System
	ISTEA:	Intermodal Surface Transportation Efficiency Act
	IRI:	International Roughness Index
	ITE:	Institute of Transportation Engineers
	ITS:	Intelligent Transportation System
J	JACIP:	Joint Automated Capital Improvement Program
	JRA:	Joint Rail Authority (SEDA-COG)
L	LCPC:	Lycoming County Planning Commission
	LEP:	Limited English Proficiency
	LOLD:	Letter of Local Determination
	LOS:	Level of Service
	LPN:	Linking Planning & NEPA
	L RTP:	Long Range Transportation Plan
	LTAP:	Local Technical Assistance Program
	LUTED:	Land Use, Transportation, and Economic Development
	LVRR:	Lycoming Valley Railroad
M	MALSR:	Medium Intensity Approach Lighting System
	MAP-21:	Moving Ahead for Progress in the 21st Century Act
	MATP:	Medical Assistance Transportation Program
	MLF:	Municipal Liquid Fuels Program
	MOU:	Memorandum of Understanding

Appendix A: Glossary of Acronyms

Abbreviations, continued

	MPC:	Municipalities Planning Code
	MPMS:	Multimodal Project Management System
	MPO:	Metropolitan Planning Organization
	MSA:	Metropolitan Statistical Area
	MTF:	Multimodal Transportation Fund
N	NACTO:	National Association of City Transportation Officials
	NAICS:	North American Industry Classification System
	NBIS:	National Bridge Inspection Program
	NEPA:	National Environmental Policy Act
	NHPP:	National Highway Performance Program
	NHS:	National Highway System
	NIMS:	National Incident Management System
	NPIAS:	National Plan of Integrated Airport Systems
	NPS:	Nonpoint Source
	NWI:	National Wetlands Inventory
O	OPI:	Overall Pavement Index
P	P3:	Public Private Partnership
	PAC:	Program Advisory Committee
	PAPI:	Precision Approach Indicators
	PAT:	Panning Advisory Team
	PCT:	Pennsylvania College of Technology
	PE:	Preliminary Engineering
	PEMA:	Pennsylvania Emergency Management Agency
	PennDOT:	Pennsylvania Department of Transportation
	PHMC:	Pennsylvania Historical & Museum Commission
	PNDI:	Pennsylvania Natural Diversity Inventory
	PPP:	Public Participation Plan
	PSAB:	Pennsylvania State Association of Boroughs
	PSATS:	Pennsylvania State Association of Township Supervisors
	PSP:	Pennsylvania State Police
	PUC:	Pennsylvania Public Utility Commission
R	RLR:	Rail Line Relocation and Improvement
	RMS:	Roadway Management System
	ROP:	Regional Operations Plan
	ROW:	Right of Way

Appendix A: Glossary of Acronyms

Abbreviations, continued

RPO:	Rural Planning Organization
RRIF:	Railroad Rehabilitation & Improvement Financing
RTAP:	RRail Transportation Assistance Program
RVT:	River Valley Transit
S	SAFETEA-LU: Safe, Accountable, Flexible, Efficient, Transportation Equity Act - A Legacy For Users
SD:	Structurally Deficient
SEDA-COG:	Susquehanna Economic Development Association Council of Governments
SHSP:	Strategic Highway Safety Plan
SOV:	Single Occupancy Vehicle
STAMPP:	Systematic Techniques to Analyze and Manage PA Pavements
STC:	State Transportation Commission
STIP:	Statewide Transportation Improvement Program
STP:	Surface Transportation Program
T	TAP: Transportation Alternatives Program
TEA-21:	Transportation Equity Act for the 21st Century
TIA:	Transportation Impact Assessment
TIGER:	Transportation Investment Generating Economic Recovery Discretionary Grants Program
TIS:	Transportation Impact Study
TIP:	Transportation Improvement Program
TMA:	Transportation Management Area
TMDL:	Total Maximum Daily Load
TOFC:	Trailer on Flat Car
TRB:	Transportation Research Board
TSA:	Transportation Security Administration
TSMO:	Transportation System Management & Operations
TYP:	Twelve-Year Program
U	UPWP: Unified Planning Work Program
USDOT:	United States Department of Transportation
V	VASI: Visual Approach Slope Indicators
VMT:	Vehicle Miles Traveled
W	WATS: Williamsport Area Transportation Study

Appendix B: Interested Party Organizations

Interested Parties		
MUNICIPAL GOVERNMENT CONTACTS - TOWNSHIPS		
Anthony Twp. Chair, Board of Supervisors	570-321-6177	402 Dutch Hill Rd Cogan Station PA 17725
Armstrong Twp. Chair, Board of Supervisors	570-326-6905	502 Waterdale Rd Williamsport PA 17702
Bastress Twp. Chair, Board of Supervisors	570-745-3622	518 Cold Water Town Rd Williamsport PA 17701
Brady Twp. Chair, Board of Supervisors	570-547-2220	1986 Elimsport Rd Montgomery PA 17752
Brown Twp. Chair, Board of Supervisors	570-353-2938	18254 Rt 414 Cedar Run PA 17727
Cascade Twp. Chair, Board of Supervisors	570-995-5099	1456 Kellyburg Rd Trout Run PA 17771
Clinton Twp. Chair, Board of Supervisors	570-547-1466	2016 SR 54 Montgomery PA 17752
Cogan House Twp. Chair, Board of Supervisors	570-634-3185	4609 Rt 189 Hwy Trout Run PA 17771
Cummings Twp. Chair, Board of Supervisors	570-753-4665	PO Box 117 Waterville PA 17776
Eldred Twp. Chair, Board of Supervisors	570-435-2606	5558 Warrensville Rd Montoursville PA 17754
Fairfield Twp. Chair, Board of Supervisors	570-433-4212	834 Fairfield Church Rd Montoursville PA 17754
Franklin Twp. Chair, Board of Supervisors	570-584-3240	PO Box 85 Lairdsville PA 17742
Gamble Twp. Chair, Board of Supervisors	570-998-2445	17 Beech Valley Rd Trout Run PA 17771
Hepburn Twp. Chair, Board of Supervisors	570-494-1907	1936 Rt 973 East Cogan Station PA 17728
Jackson Twp. Chair, Board of Supervisors	570-324-6802	3809 Williamson Trail Liberty PA 16930
Jordan Twp. Chair, Board of Supervisors	570-458-5450	PO Box 85 Unityville PA 17774
Lewis Twp. Chair, Board of Supervisors	570-998-2779	69 Main St PO Box 118 Trout Run PA 17771
Limestone Twp. Chair, Board of Supervisors	570-745-3478	6235 S Rt 44 Hwy Jersey Shore PA 17740
Loyalsock Twp. Chair, Board of Supervisors	570-745-3478	2501 East Third Street Williamsport PA 17701

Appendix B: Interested Party Organizations

Interested Parties, cont.		
MUNICIPAL GOVERNMENT CONTACTS - TOWNSHIPS		
Lycoming Twp. Chair, Board of Supervisors	570-998-2988	328 Dauber Rd Cogan Station PA 17728
McHenry Twp. Chair, Board of Supervisors	570-753-2679	145 Railroad Street Cammal PA 17723
McIntyre Twp. Chair, Board of Supervisors	570-995-5141	PO Box 171 Ralston PA 17763
McNett Twp. Chair, Board of Supervisors	570-673-3968	1785 Yorktown Rd Roaring Branch PA 17765
Mifflin Twp. Chair, Board of Supervisors	570-398-7123	106 First Fork Rd Jersey Shore PA 17740
Mill Creek Twp. Chair, Board of Supervisors	570-435-0255	206 Woodley Hollow Rd Montoursville PA 17754
Moreland Twp. Chair, Board of Supervisors	570-546-5857	1220 Moreland Twp Rd Muncy PA 17756
Muncy Creek Twp. Chair, Board of Supervisors	570-546-6067	575 Rt 442 Hwy Muncy PA 17756
Muncy Twp. Chair, Board of Supervisors	570-546-6845	1922 Pond Rd Pennsdale PA 17756
Nippenose Twp. Chair, Board of Supervisors	570-398-1281	Box 201 Antes Fort PA 17720
Old Lycoming Twp. Manager	570-322-6906	1951 Green Ave Williamsport PA 17701
Penn Twp. Chair, Board of Supervisors	570-584-3365	4600 Beaver Lake Rd Hughesville PA 17737
Piatt Twp. Chair, Board of Supervisors	570-398-0600	9687 North Rt 220 Hwy Jersey Shore PA 17740
Pine Twp. Chair, Board of Supervisors	570-353-2263	925 Oregon Hill Rd Morris PA 16938
Plunketts Creek Twp. Chair, Board of Supervisors	570-478-2231	179 Dunwoody Rd Williamsport PA 17701
Porter Twp. Chair, Board of Supervisors	570-398-4526	5 Shaffer Ln Jersey Shore PA 17740
Shrewsbury Twp. Chair, Board of Supervisors	570-584-3079	143 Point Bethel Rd Hughesville PA 17737
Susquehanna Twp. Chair, Board of Supervisors	570-322-6827	91 E Village Dr Williamsport PA 17701
Upper Fairfield Twp. Chair, Board of Supervisors	570-435-0488	4090 Rt 87 Hwy Montoursville PA 17754

Appendix B: Interested Party Organizations

Interested Parties, cont.		
MUNICIPAL GOVERNMENT CONTACTS - TOWNSHIPS		
Washington Twp. Chair, Board of Supervisors	570-547-6893	15973 S Rt 44 Hwy Cogan Station PA 17728
Watson Twp. Chair, Board of Supervisors	570-398-7829	5172 N SR 44 Cammal PA 17723
Wolf Twp. Chair, Board of Supervisors	570-584-2672	695 Rt 405 Hwy Ralston PA 17763
Woodward Twp. Chair, Board of Supervisors	570-323-9631	4910 S Rt 220 Hwy, Suite 1 Roaring Branch PA 17765
MUNICIPAL GOVERNMENT CONTACTS - BOROUGHES		
Duboistown Boro. President, Boro. Council	570-323-3646	2651 Euclid Ave DuBoistown PA 17702
Hughesville Boro. President, Boro. Council	570-584-2041	147 S 5th Street Hughesville 17737
Jersey Shore Boro. Manager	570-398-0104	232 Smith Street Jersey Shore PA 17740
Montgomery Boro. President, Boro. Council	570-547-1671	35 S Main Street Montgomery PA 17752
Montoursville Boro. President, Boro. Council	570-368-2486	617 N Loyalsock Ave Antes Fort PA 17754
Muncy Boro. President, Boro. Council	570-546-3952	14 North Washington Street Muncy PA 17756
Picture Rocks Boro. President, Boro. Council	570-584-6362	13 Main Street Picture Rocks PA 17762
Salladasburg Boro. President, Boro. Council	570-865-6641	145 Blackhorse Alley Salladasburg PA 17740
South Williamsport Boro. Manager	570-322-0158	329 W Southern Ave South Williamsport PA 17702
PA State Assoc. of Boroughs Executive Director	717-236-9526 ext. 1043	2941 North Front Street Harrisburg PA 17110
MUNICIPAL GOVERNMENT CONTACTS - MUNICIPAL MISC		
PA State Assoc. of Twp. Supervisors Executive Director	717-763-0930 ext. 187	4855 Woodland Dr Jersey Shore PA 17740
City of Williamsport President, City Council	570-327-7504	245 W 4th Street Montoursville PA 17754

Appendix B: Interested Party Organizations

Interested Parties, cont.		
COUNCILS OF GOVERNMENT CONTACTS		
Central Keystone COG Office Manager	570-522-1326	1610 Industrial Blvd Lewisburg PA 17837
Pine Creek Council of Governments Chairman, Pine Creek COG	570-755-5695	PO Box 19 Cammal PA 17723
SEDA-COG Chief of Transportation & Rail	570-524-4491	201 Furnance Road Lewisburg PA 17701
West Branch Council of Government	570-548-3349	74 Center Street Picture Rocks PA 17762
LYCOMING COUNTY GOVERNMENT CONTACTS		
Lycoming/Clinton Bi-County Office for the Aging Director, Office of Aging	570-326-0587	2138 Lincoln Street Williamsport PA 17701
Lycoming /Clinton Joinder Board Director	570-326-7895	200 East Street Williamsport PA 17701
Lycoming County Housing Authority Executive Director	570-327-3755	1941 Lincoln Dr Williamsport PA 17701
Lycoming Co. Public Assistance Office Executive Director	570-327-3300	400 Little League Boulevard Williamsport PA 17701
PENNSYLVANIA STATE AGENCIES		
PA DCED Deputy Executive Director	866-466-3972	400 North Street, 4th Floor Harrisburg PA 17120
PA DEP Environmental Community Relations Specialist	570-327-3636	208 W 3rd Street, Suite 101 Williamsport PA 17701
PennDOT Engineering District 3-0 Transportation Planning Manager	570-368-8686	715 Jordan Ave Montoursville PA 17754
EDUCATION ORGANIZATIONS - LIBRARIES		
Hughesville Public Library Director	570-584-3762	146 South 5th Street Hughesville PA 17737
James V. Brown Library Executive Director	570-326-0536 ext. 102	19 East 4th Street Williamsport PA 17701
Montgomery Area Public Library Director	570-547-6212	1 South Main Street Montgomery PA 17752
Muncy Public Library Director of Operations	570-546-5014	108 South Main Street Muncy PA 17756
WB Konkle Library Director	570-368-1840	384 Borad Street Montoursville PA 17754

Appendix B: Interested Party Organizations

Interested Parties, cont.		
EDUCATION ORGANIZATIONS - LIBRARIES		
East Lycoming SD Business Manager	570-584-2131	349 Cemetery Street Hughesville PA 17737
Jersey Shore SD Asst. Superintendent	570-398-1561	175 A and P Drive Williamsport PA 17701
Loyalsock SD Business Manager	570-326-6508	1605 Four Mile Dr Williamsport PA 17701
Loyalsock SD Transportation Manager	570-326-6508	1605 Four Mile Dr Williamsport PA 17701
Montgomery SD Superintendent	570-547-1608 ext 1122	120 Penn Street Montgomery PA 17752
Montoursville SD Superintendent	570-368-2491	50 N Arch Street Montoursville PA 17754
Muncy SD Superintendent	570-546-3125 ext. 2000	206 Sherman Street Muncy PA 17756
South Williamsport SD Superintendent	570-327-1581 ext. 4466	515 West Central Ave South Williamsport PA 17702
Williamsport SD Superintendent	570-327-5500	2780 West Fourth Street Williamsport PA 17701
EDUCATION ORGANIZATIONS - COLLEGES/ UNIVERSITIES		
Lycoming College Vice President, Finance & Administration	570-321-4031	700 College Place Williamsport PA 17701
PA College of Technology Chief of Staff / Asst. to the President for College Rel.	570-326-2400 ext. 4966	One College Ave. Williamsport PA 17701
PROVIDERS OF PUBLIC TRANSPORTATION		
STEP Inc. Program Manager, STEP Transportation	570-326-0587	2138 Lincoln Street Williamsport PA 17701
River Valley Transit Business and Compliance Manager	570-326-2500	1500 W 3rd Street Williamsport PA 17701
Williamsport Municipal Airport Auth. Director	570-368-2444	724 Airport Rd, Suite A106 Montoursville PA 17754
PROVIDERS OF PRIVATE TRANSPORTATION		
Billtown Cab President	570-322-2222	3575 W 4th Street Williamsport PA 17701
Fullington Trailways Director of Business Development	814-548-7332 ext. 324	11 W Church Street Williamsport PA 17701

Appendix B: Interested Party Organizations

Interested Parties, cont.		
PROVIDERS OF PRIVATE TRANSPORTATION, CONT.		
Lyft	844-331-1215	245 W 17th Street New York City NY 10011
Uber		636 W 28th St New York NY 10001
PROVIDERS OF FREIGHT TRANSPORTATION		
Lycoming Valley Railroad General Manager	570-327-0732	421 Reighard Ave Williamsport PA 17701
PA Motor Truck Association President/CEO	717-761-7122	910 Linda Lane Camp Hill PA 17011
SEDA-COG Joint Rail Authority Chief of Transportation & Rail	570-524-4491	201 Furnance Road Lewisburg PA 17837
Williamsport-Lycoming Chamber of Commerce President/CEO	570-320-4213	102 W 4th Street Williamsport PA 17701
REPRESENTATIVES OF USERS OF PUBLIC TRANSPORTATION		
US Congressman Fred Keller Chief of Staff	202-225-3731	1717 Longworth House Office Building Washington DC 20515
State Senator Eugene Yaw Chief of Staff	570-322-6457	175 Pine Street Suite 105 Williamsport PA 17701
State Representative Garth Everett Chief of Staff	570-546-2084	21 Kristi Rd, Suite 1 Muncy PA 17756
State Representative Jeff Wheeland Office Manager	570-321-1270	349 Pine Street, Suite 1 Williamsport PA 17701
REPS. OF USERS OF PEDESTRIAN WALKWAYS AND BICYCLE TRANSPORTATION FACILITIES		
Bicycle Recycle Manager	570-971-7263	1307 Park Ave, Building 10 Williamsport PA 17701
Williamsport Bicycle Club President, Williamsport Bicycle Club	570-279-1089	PO Box 187 Monrgomery, PA 17752
Susquehanna Valley Velo Club President	570-419-8039	PO Box 51 Williamsport PA 17703
REPRESENTATIVES OF PUBLIC TRANSPORTATION EMPLOYEES		
Amalgamated Transit Union, AFL-CIO/CLC President	301-431-7100	10000 New Hampshire Ave Silver Spring MD 20903
PA AFSCME Director	800-523-7263	250 Commerce Park Dr New Columbia PA 17856

Appendix B: Interested Party Organizations

Interested Parties, cont.		
REPRESENTATIVES OF THE DISABLED		
Center for Independent Living / Roads to Freedom of Northcentral PA - CEO	570-327-9070	24 East Third Street Williamsport PA 17701
Clearvision Residential Office Manager	570-547-2810	456 Saegers Station Rd Montgomery PA 17752
Hope Enterprises Office Manager	570-326-3745	2401 Reach Road Williamsport PA 17701
Office of Vocational Rehabilitation District Administrator	570-327-3600	208 W 3rd Street, Suite 102 Williamsport PA 17701
Northcentral Sight Services President/CEO	570-323-9401 ext. 126	2121 Reach Road Williamsport PA 17701
HEALTH CARE & ASSISTED LIVING FACILITIES		
Arista Care Loyalsock Loyalsock Administrator	570-601-8100	1445 Sycamore Rd Montoursville PA 17754
Elmcroft of Loyalsock Loyalsock Executive Director	570-360-9903	2985 4 Mile Drive Montoursville PA 17754
Hillside Senior Living Community Administrator	570-478-1017	2725 Four Mile Drive Montoursville PA 17754
Insingers Personal Care Administrator	570-327-1140	6 E Central Ave Williamsport PA 17702
ManorCare- Jersey Shore Building Administrator	570-398-4747	1008 Thompson Street Jersey Shore PA 17740
Manor Care Health Services -North Business Manager	570-323-8627	300 Leader Dr Williamsport PA 17701
Manor Care Health Services - South Building Administrator	570-323-3758	101 Leader Dr Williamsport PA 17701
Muncy Valley Skilled Nursing & Rehabilitation Center President Muncy Hosptial	570-546-4242	215 E Water Street Muncy PA 17756
Presbyterian Home At Williamsport Person Care Home Administrator	570-601-8351	810 Loisa Street Williamsport PA 17701
Rose View Nursing and Rehab Asst. Administrator and Admissions	570-323-4340	1201 Rural Ave Williamsport PA 17701
The Williamsport Home Executive Director	570-323-8781	1900 Ravine Rd Williamsport PA 17701
UPMC Susquehanna Public Relations Director	570-321-1000	700 High Street Williamsport PA 17701
West House Personal Care Inc Administrator	570-321-9378	616 W Edwin Street Williamsport PA 17701

Appendix B: Interested Party Organizations

Interested Parties, cont.		
FAITH BASED ORGANIZATIONS		
Antioch Baptist Church Administrator	570-323-2425	514 High Street Williamsport PA 17701
Elimsport Area Amish Church Elder	570-546-9709	105 Private Road Montgomery PA 17752
United Churches of Lycoming County Director	570-322-1110	202 East Third Street Williamsport PA 17701
OTHER INTERESTED PARTIES		
Career Link Williamsport Site Administrator	570-601-5465	329 Pine Street Williamsport PA 17701
Easter Seal Society Director, West Central Easter Seals	814-238-4434	383 Rolling Ridge Dr State College PA 16801
Firetree Place Executive Director	570-360-9946	600 Campbell Street Williamsport PA 17701
First Communities Foundation Partnership of PA President/CEO FCFP	570-321-1500	201 W 4th Street Williamsport PA 17701
Lycoming County United Way President/CEO	570-323-9448	One West Third Street, Suite 208 Williamsport PA 17701
Lycoming County Visitors Bureau	570-327-7700	102 West 4th Street Williamsport PA 17701
Lycoming Economic Development Foundation President	570-326-9081	1700 Four Mile Dr Williamsport PA 17701
Office of Vocational Rehabilitation President	570-327-3600	208 W 3rd Street, Suite 102 Williamsport PA 17701
PA Highway Information Association Managing Director	717-236-6021	800 N 3rd Street Harrisburg PA 17102
Thrive International Programs Executive Director	570-337-2898	420 Elmira Street Williamsport PA 17701
US Army Corps of Engineers	410-962-4977	2 Hopkins Lane Baltimore MD 21201
US Army Corps of Engineers (State College Office) Silver Jackets Coordinator	814-272-0745	1631 S Atherton Street 102 State College PA 16801
West Branch Susquehanna Builders Assoc.	570-326-4211	999 N Loyalsock Ave, Suite 1 Montoursville PA 17754
Williamsport Parking Authority On-site Manager	570-323-6476	270 W 3rd Street Williamsport PA 17701
Williamsport YMCA Branch Executive Director	570-323-7134	641 Walnut Street Williamsport PA 17701

Appendix B: Interested Party Organizations

Interested Parties, cont.

OTHER INTERESTED PARTIES, CONT.

Williamsport YWCA Communications & Development	570-322-4637	815 W 4th Street Williamsport PA 17701
---	--------------	---

TRIBAL GOVERNMENTS

Shawnee Tribe of Oklahoma Governor	2025 South Gordon Cooper Drive Shawnee OK 74801
---------------------------------------	--

Cayuga Nation	PO Box 169 Seneca Falls NY 13148
---------------	-------------------------------------

Delaware Nation Tribal President	PO Box 825 Anadarko OK 73005
-------------------------------------	---------------------------------

Delaware Tribe Historic Preservation	PO Box 64 Pocono Lake PA 18347
--------------------------------------	-----------------------------------

Eastern Shawnee Tribe of Oklahoma Chief	PO Box 350 Seneca Falls MO 64865
--	-------------------------------------

Oneida Nation of Wisconsin Chairwoman	PO Box 365 Oneida WI 54155
--	-------------------------------

Seneca Nation of Indians President	PO Box 231 Salamanca NY 14779
---------------------------------------	----------------------------------


Seneca-Cayuga Tribe of Oklahoma Chief	PO Box 1283 Miami OK 74355
--	-------------------------------

St. Regis Mohawk Tribe Chief	412 State Route 37 Hogansburg NY 13655
---------------------------------	---

Shawnee Tribe Chairman	29 South 69a Highway Miami OK 74354
---------------------------	--

Tonawanda Seneca Nation Chief	7027 Meadville Road Basom NY 14013
----------------------------------	---------------------------------------

Appendix C: WATS MPO Title VI Complaint Form

		<h3>DISCRIMINATION COMPLAINT FORM</h3>	
Name		Phone	Name of Person(s) That Discriminated Against You
Address (Street No., P.O. Box, Etc.)		Location and Position of Person (If Known)	
City, State, Zip		City, State, Zip	
Discrimination Because of: <input type="checkbox"/> Race/Color* <input type="checkbox"/> Sex <input type="checkbox"/> Disability** <input type="checkbox"/> Age <input type="checkbox"/> National Origin* <input type="checkbox"/> Retaliation <input type="checkbox"/> Religion		Date of Alleged Incident	
Explain as briefly and clearly as possible what happened and how you were discriminated against. Indicate who was involved. Be sure to include how other persons were treated differently than you. Also, attach any written material pertaining to your case.			
Signature		Date	
Please submit this form to one of the following agencies:			
Pennsylvania Department of Transportation <i>Bureau of Equal Opportunity</i> P.O. Box 3251 Harrisburg, PA 17105-3251 Phone: (800) 468-4201 Email: penndotreports@pa.gov	Federal Highway Administration <i>U.S. Department of Transportation Equal Opportunity Specialist</i> Pennsylvania Division Office 228 Walnut Street, Room 508 Harrisburg, PA 17101-1720 Phone: (717) 221-3705	PA Human Relations Commission <i>Equal Opportunity Specialist</i> Harrisburg Regional Office 333 Market Street, 8th Floor Harrisburg, PA 17101 Phone: (717) 787-9780	U.S. Department of Justice <i>Office of Justice Programs</i> Office for Civil Rights 810 7th Street, NW Washington, DC 20531 Phone: (202) 307-0690 Phone (TDD): 202-307-2027
<small>* Indicates is specific to Title VI of the Civil Rights Act of 1964 **Indicates is specific to Americans with Disabilities Act of 1990</small>			

[Click the image to link to Title VI Complaint Form](#)

Appendix D: Glossary

Elderly: Individuals age 65 or older.

Limited English Proficiency (LEP): Individuals who do not speak English as their primary language and have a limited ability to read, write, speak, and/or understand English may be considered limited English proficient.

Low Income: An individual whose median household income is at or below the U.S. Department of Health and Human Services poverty guidelines.

Minority: The U.S. Census identifies minorities as people of African, Hispanic, Asian, American Indian, or Alaskan Native origin. FHWA and USDOT EJ Orders consider minority persons and persons belonging to any of the following groups:

- **Black** – An individual having origins in any of the black racial groups of Africa.
- **Hispanic or Latino** – An individual of Mexican, Puerto Rican, Cuban, Central or South American or other Spanish culture or origin, regardless of race.
- **Asian** – An individual having origins in the Far East, Southeast Asia, or The Indian subcontinent.
- **American Indian and Alaskan Native** – An individual having origins in North America and who maintains cultural identification through tribal affiliation or community recognition.
- **Hawaiian and Other Pacific Islander** – An individual having origins in Hawaii, Guam, Samoa, or other Pacific Islands.

Person with Disabilities: Under the Americans with Disabilities Act of 1990, a qualified individual with a disability is a person that 1) has a physical or mental impairment that substantially limits one or more major activities; 2) has a record of such an impairment; or 3) is regarded as having such an impairment.

Appendix E: WATS Bylaws

HOLD FOR NEW BYLAWS

DRAFT

Appendix F: Summary of Public Comments

HOLD FOR PUBLIC COMMENTS & RESPONSES

DRAFT

