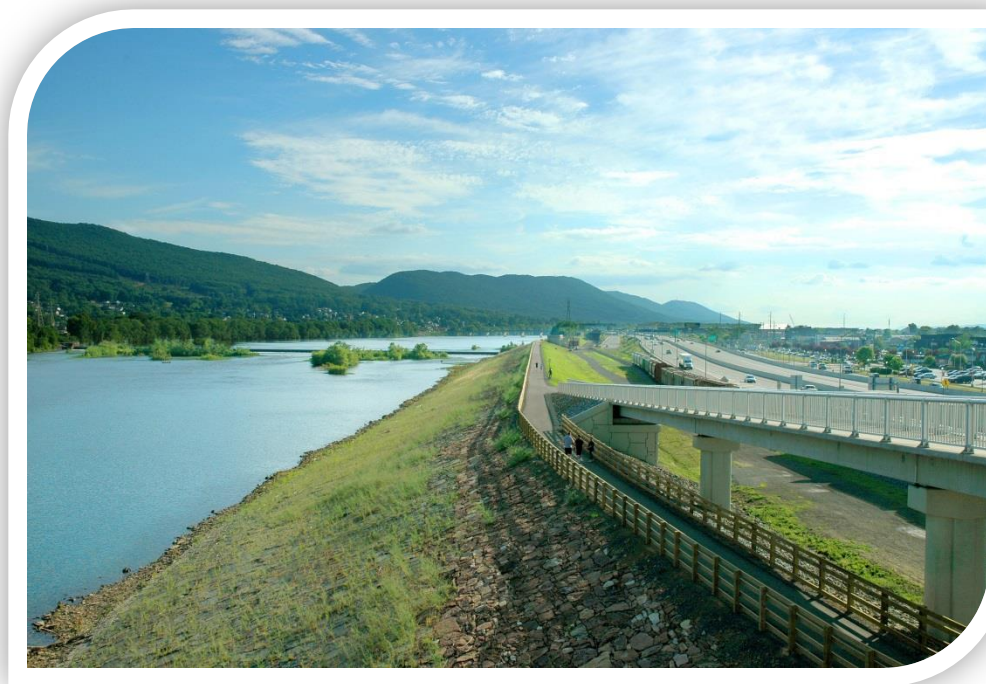


# WATS LONG RANGE TRANSPORTATION PLAN UPDATE, 2018-2038

---

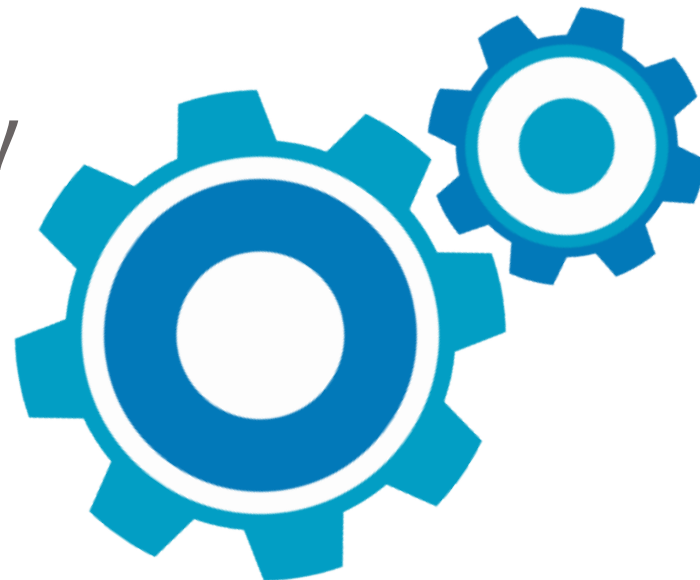
## Public Outreach Presentation

- County Commissioners  
Nov. 1, 2018
- Lycoming Co. Planning Commission  
Nov. 15, 2018



# Presentation Overview

- Plan Highlights
- WATS At A Glance
- Planning Process
- Implementation
- LRTP Web Page



Summer 2015  
Comp Plan kick-off

Summer/Fall 2016  
Public Outreach & Surveys

Summer 2018  
County Plan Adopted

Spring 2016  
Focus Groups

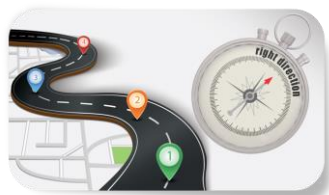
Summer 2017  
Growth Area  
Plans Adopted

Spring 2017  
LRTP Kick-off


Summer/Fall 2018  
State / Federal Agency  
Review

Spring 2017 – Fall  
2018  
Plan Development

December 2018  
LRTP Adoption



# WATS Long Range Transportation Plan 2018-2038

- 20 year planning horizon
  - Updated every 5 years
  - Must be fiscally constrained
  - Utilizes latest demographic data
  - Multi-modal in scope
- 
- An illustration featuring a winding asphalt road with white dashed lines, set against a light gray background with a faint grid. The road is marked with four numbered location pins: a red pin with the number 4 at the top, a blue pin with the number 3 on the left, an orange pin with the number 2 on the right, and a green pin with the number 1 at the bottom. To the right of the road is a silver compass with a white face and a red needle pointing towards the top-right. The words "right direction" are written in black on the compass face.
- **WATS, in partnership with Dist. 3, have taken a "fix it first" plan that is entirely focused on maintenance and safety enhancements of current infrastructure "within the existing footprint"**

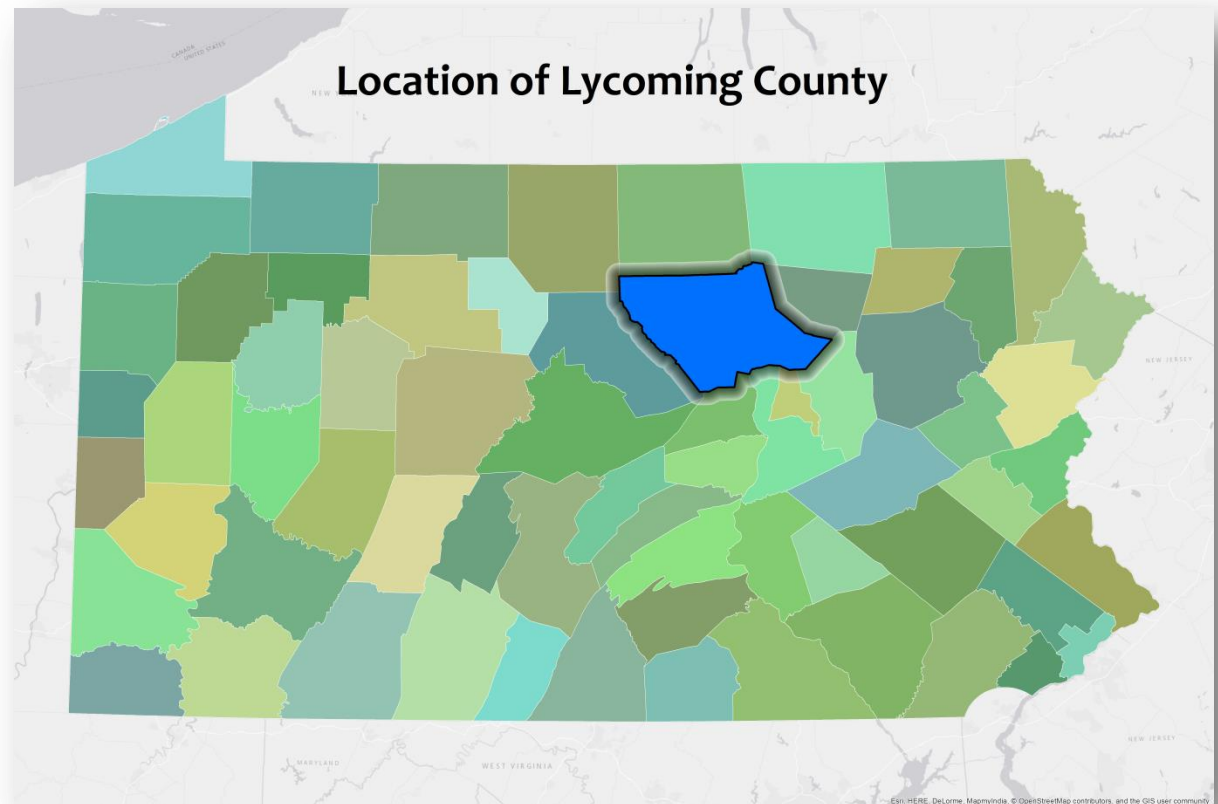
## WATS at a Glance

MPO comprised of:

- 2 Committees
  - Technical Committee
  - Coordinating Committee
- 2 Advisory Committees
  - Transit
  - Bicycle & Ped
- Jurisdiction is the entirety of Lycoming Co.
  - Comprised of 52 municipalities
  - Geographically, largest Co. in PA
  - Pop. 116,111

Administrative Duties:

- Staff Lycoming Co. Planning Dept. & acts as the WATS Secretary



# Planning Process



- Demographics

- Land Use

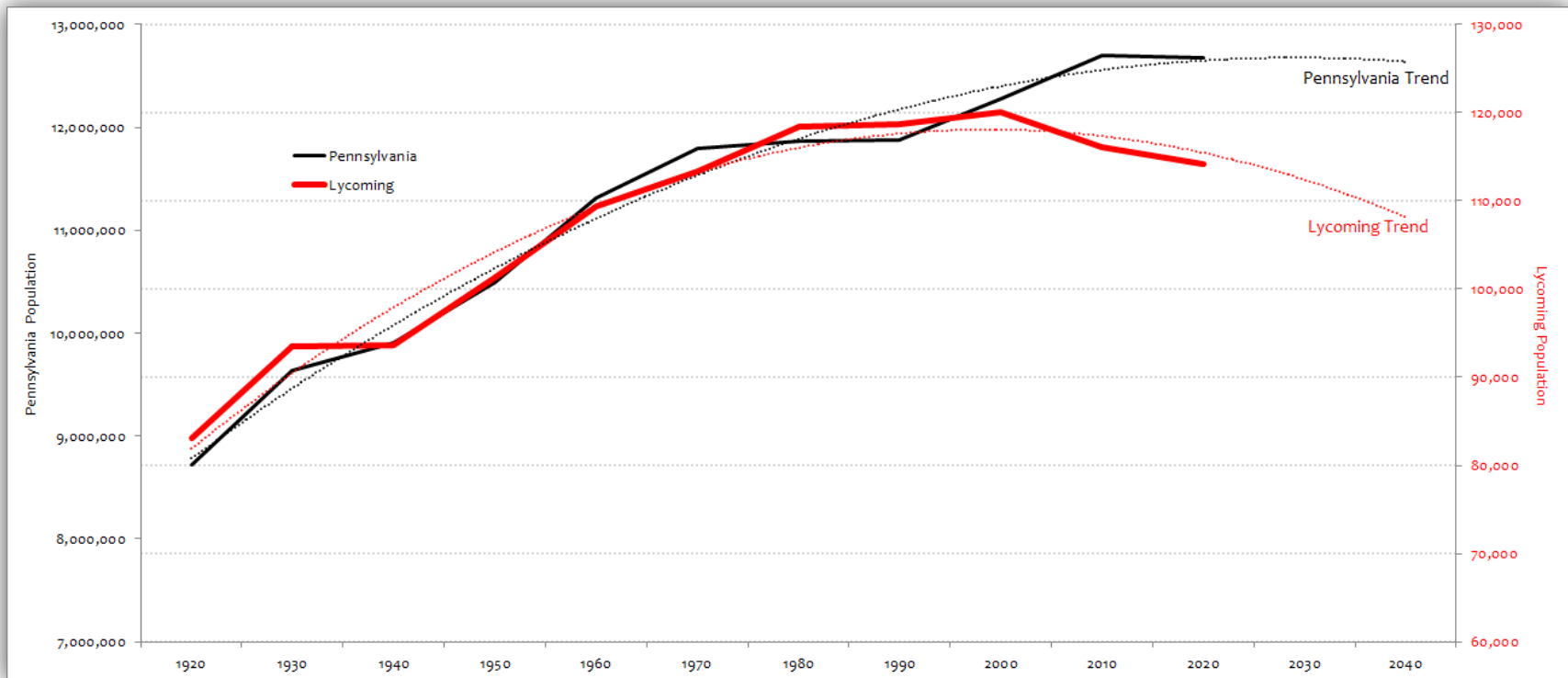
- Transportation Network

- Infrastructure Condition

- LRTP Project Programming

- Environmental Considerations

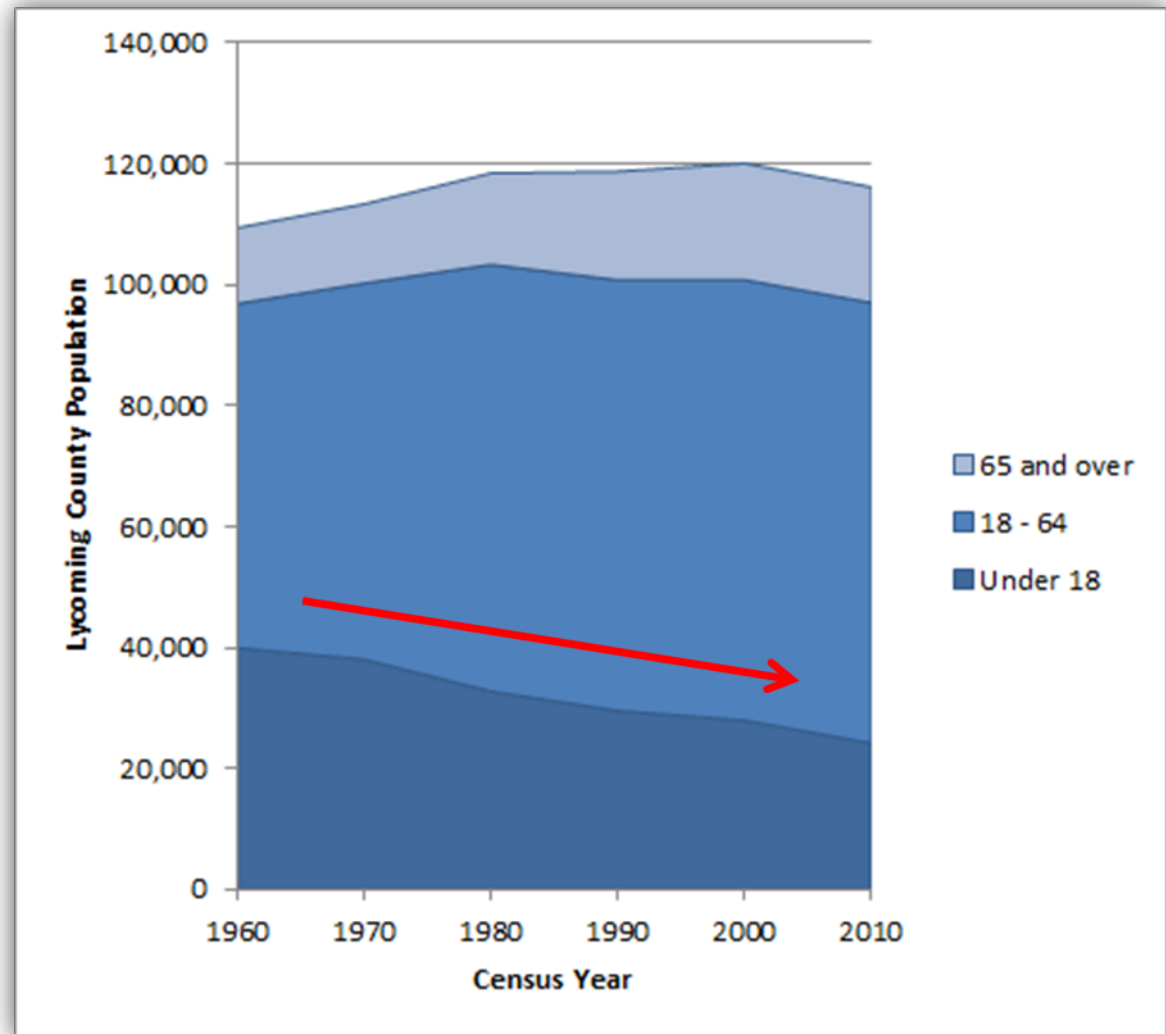
# Demographics: 100 Yr. Population Trend



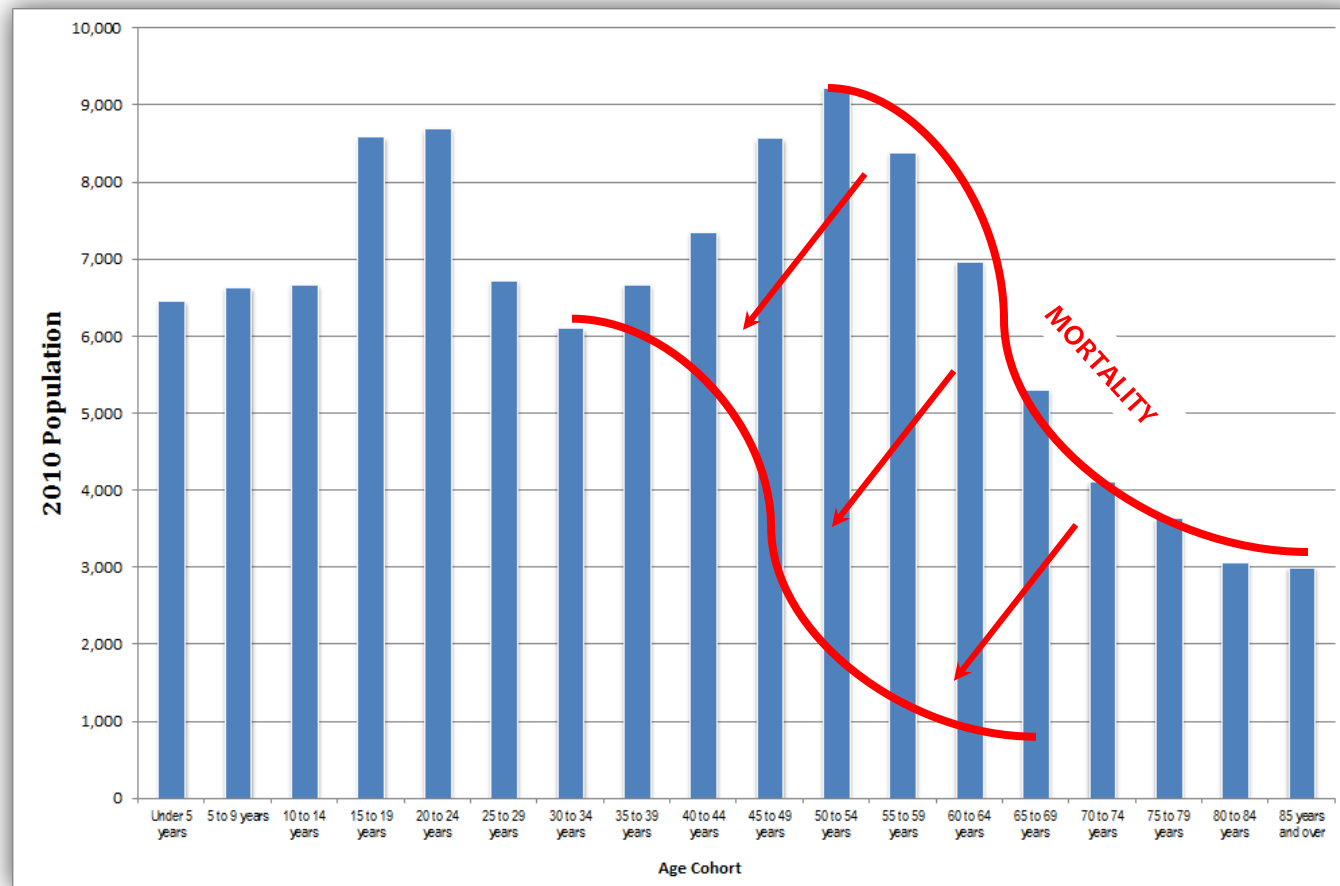
Analysis suggests that Lycoming County will continue to decrease to a size similar to that of the late 1960's by the end of the 20 planning horizon

## Demographics: Age Cohorts

- Largest age group 18-64
- Pop. Under 18 is decreasing
- Given cohort composition, Lycoming Co. pop. will continue to decrease unless:
  - Avg. child per family increases: <1 per 2010 census; or,
  - Influx of new population increases



# Demographics

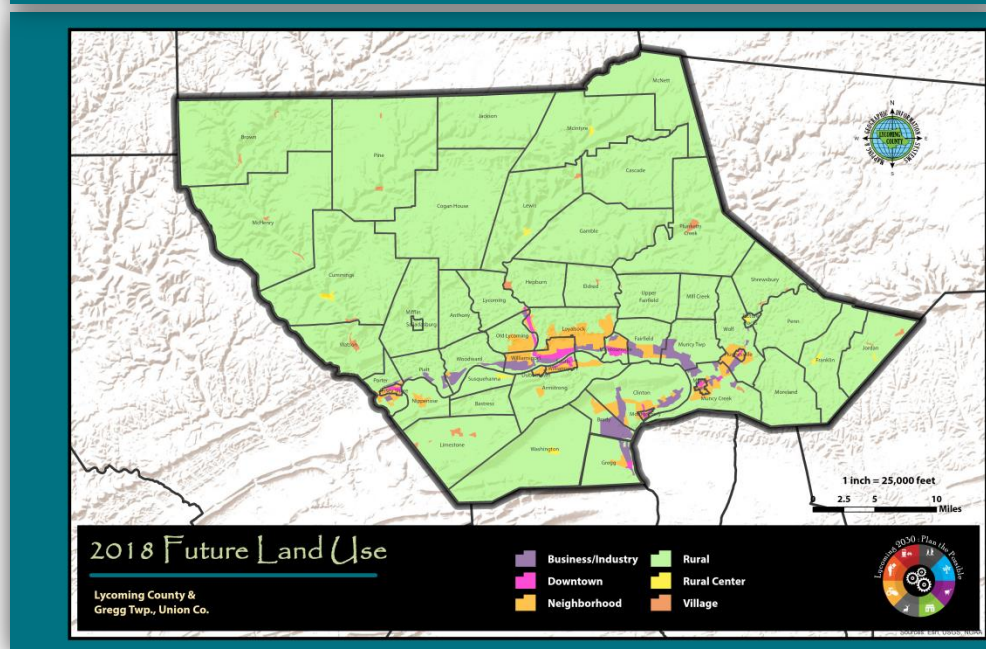
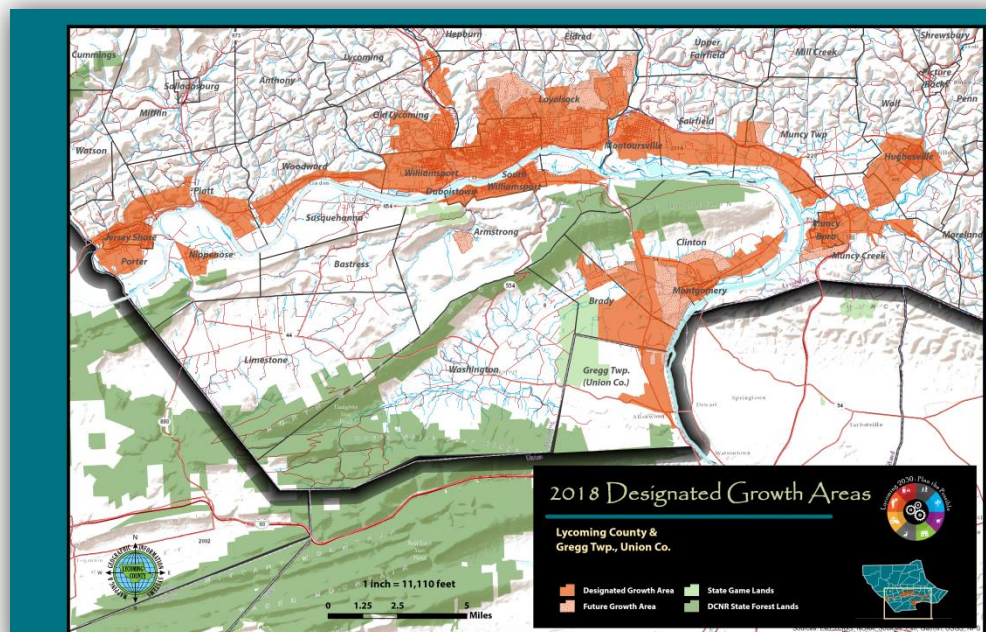




## Land Use

An update to the Lycoming County Comprehensive plan was adopted in 2018

- This maps reflect the current & desired development pattern within the County
- Key factor when determining if an area's classification is the **presence** of infrastructure



# Transportation Network

## Mode Highlights

Loyalsock Creek Railroad Bridge



Trade & Transit Center 2



CNG Bus Fleet Conversion



Williamsport Regional Airport  
New Airport Terminal



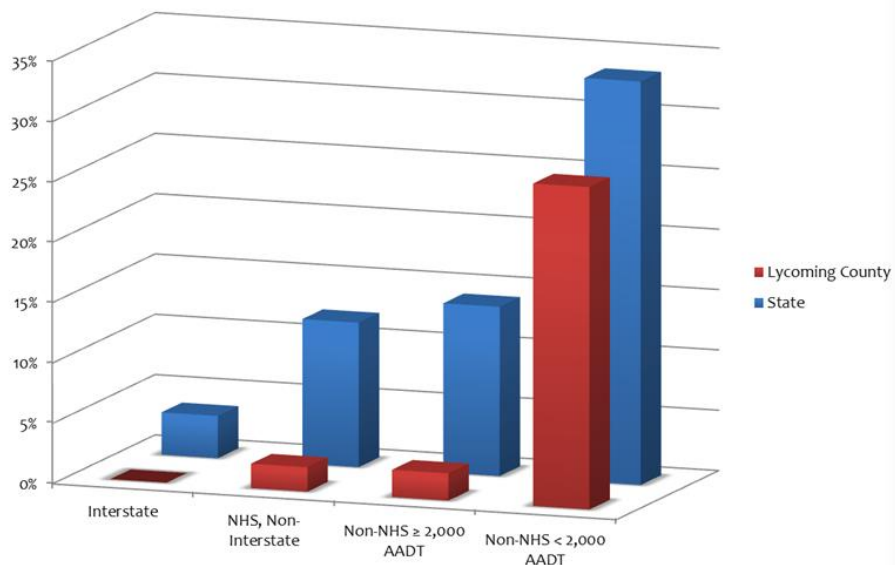
# Infrastructure Condition

- Roads:
  - State-owned highway pavements within Lycoming County are in much better overall condition than statewide pavements on all business plan networks in terms of both OPI and IRI
- Bridges:
  - Lycoming County is significantly better than the state-wide averages for overall condition of state-owned bridges

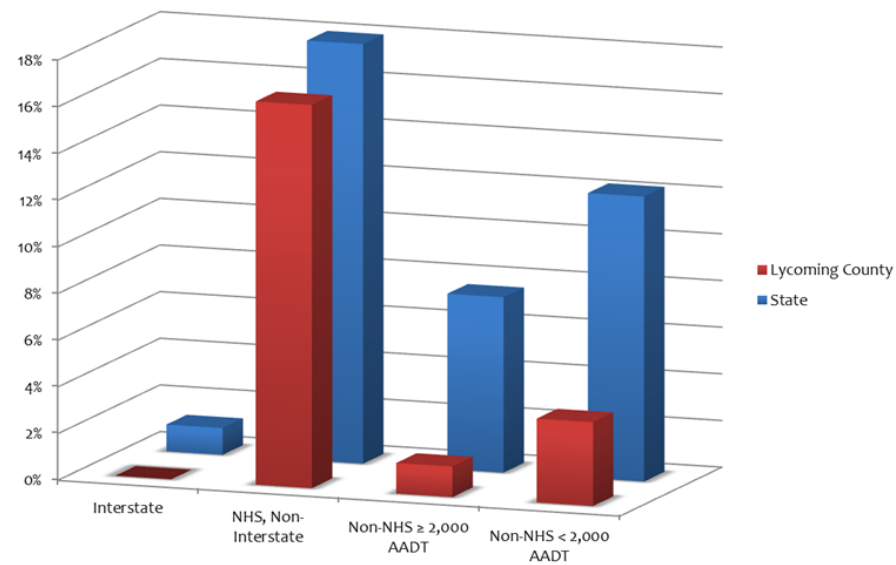
# Multimodal System Inventory

- Highway System - Pavement

Percent of Segment Miles with Poor IRI by Business Plan Network



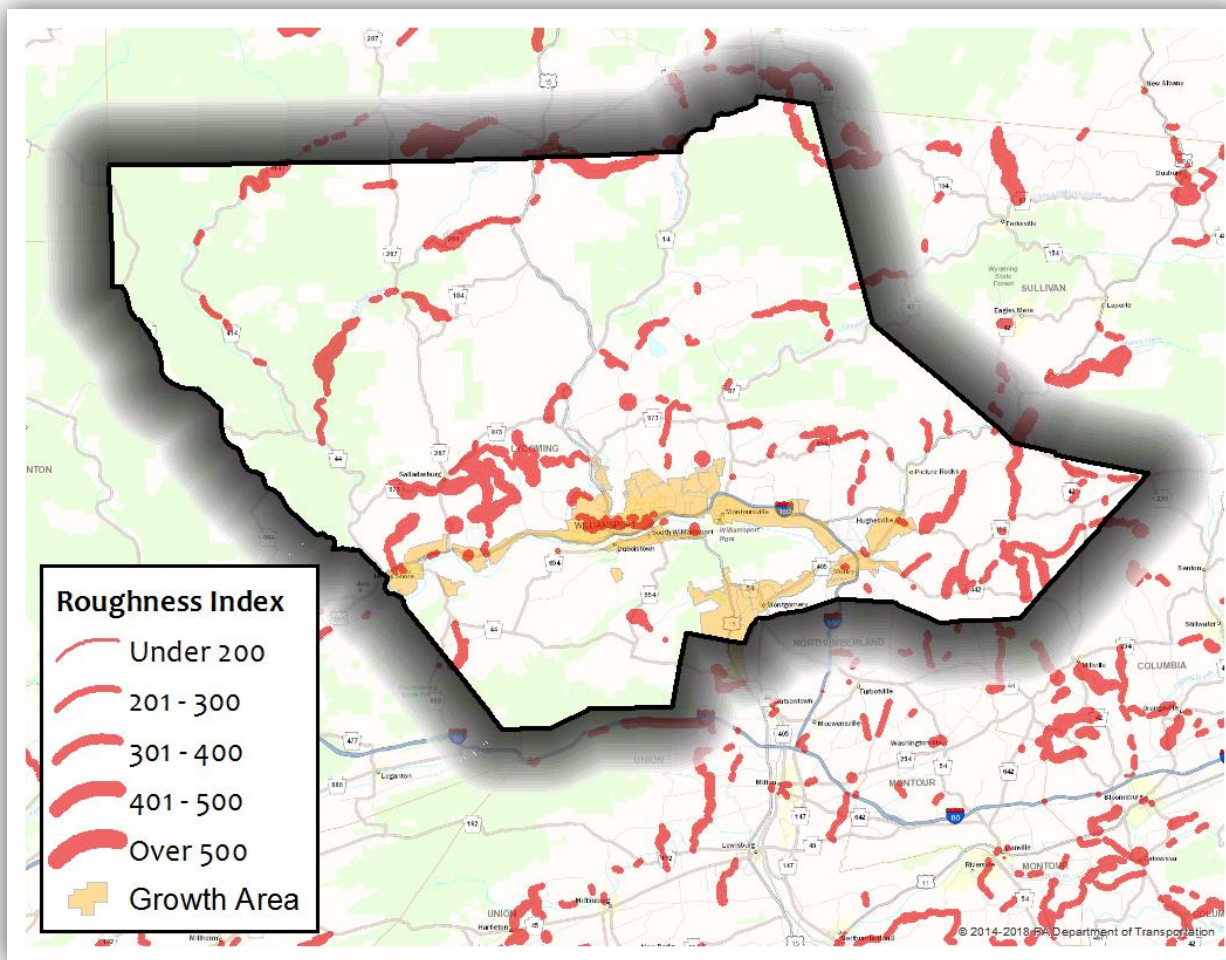
Percent of Segment Miles with Poor OPI by Business Plan Network





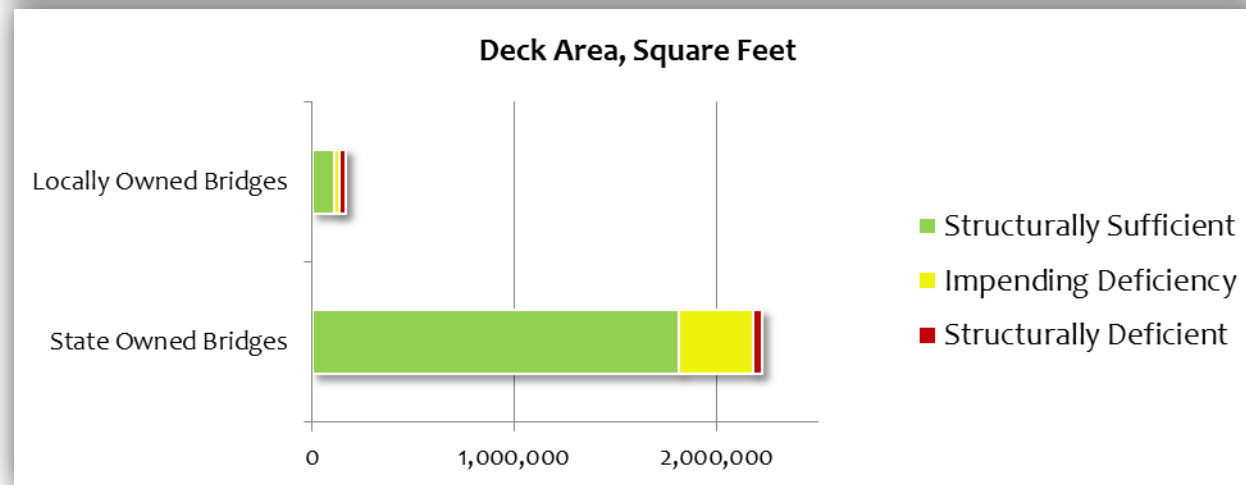
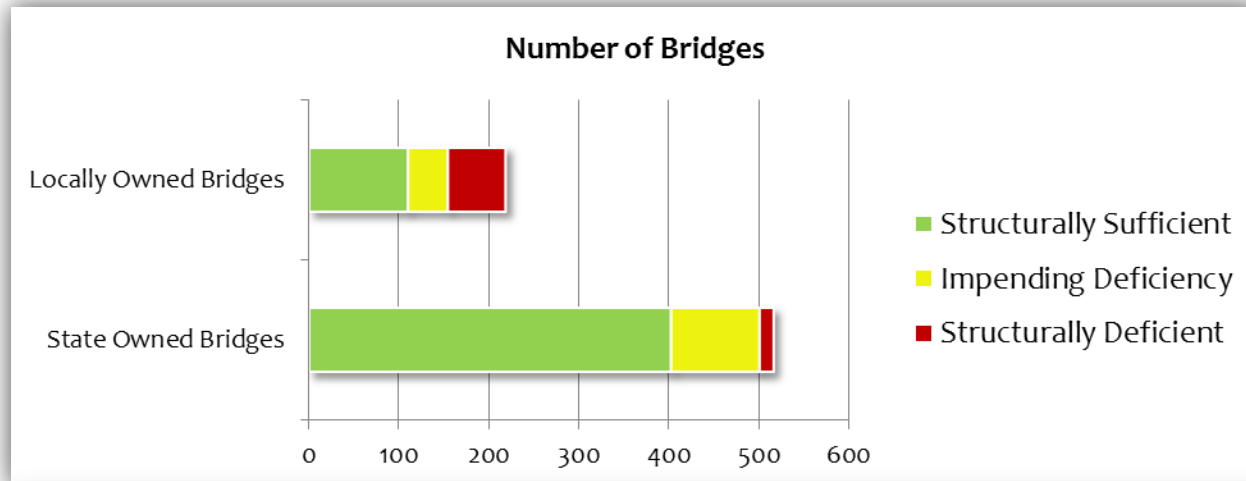
# Multimodal System Inventory

- Highway System - Pavement



# Multimodal System Inventory

- Bridges

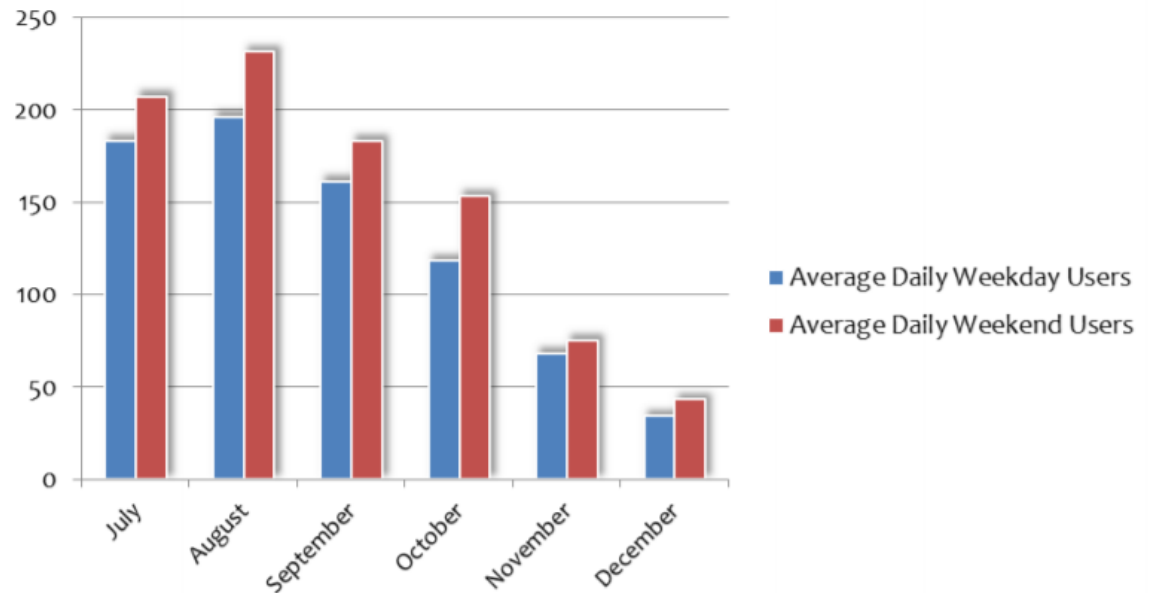


# Active Transportation

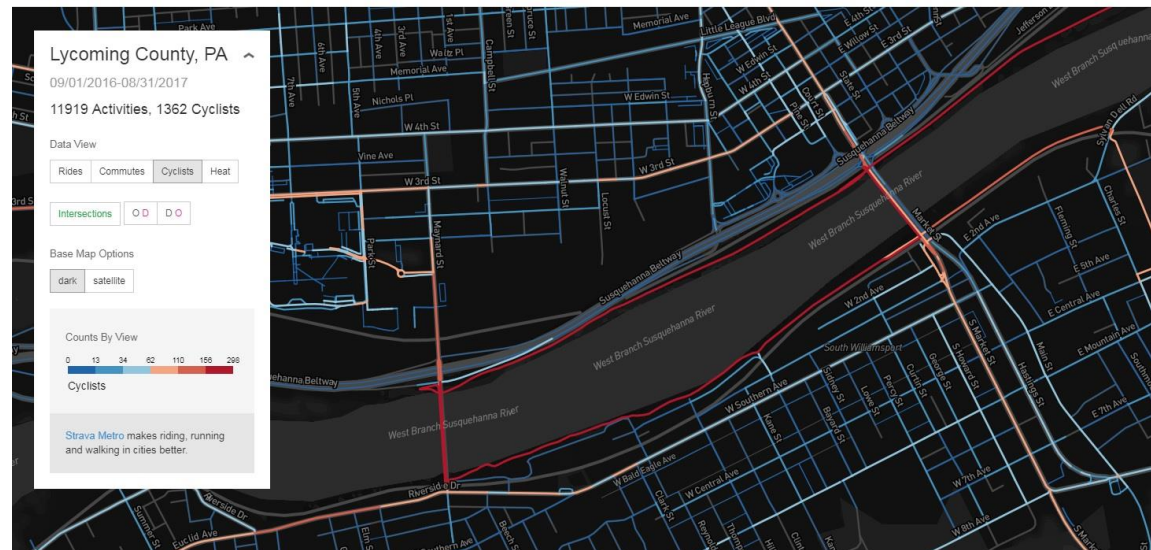
Pedestrian facility improvements aren't just nice to have:

- Increase public safety
- Means of transportation
- Enhance tourism experience and quality of life

Comp Plan feedback indicates that the general public is supportive of these types of improvements.



STRAVA | METRO

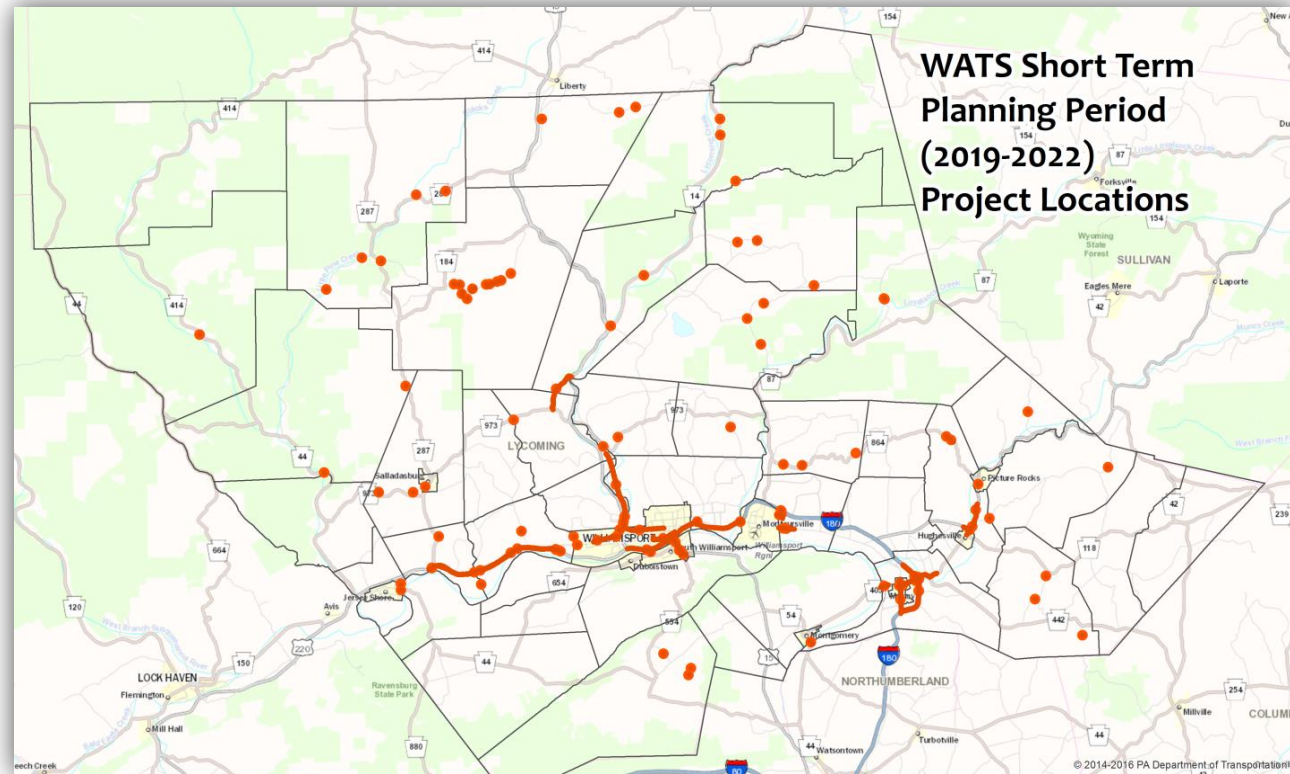






## TIP Short Term: (Years 1-4) Highway & Bridge

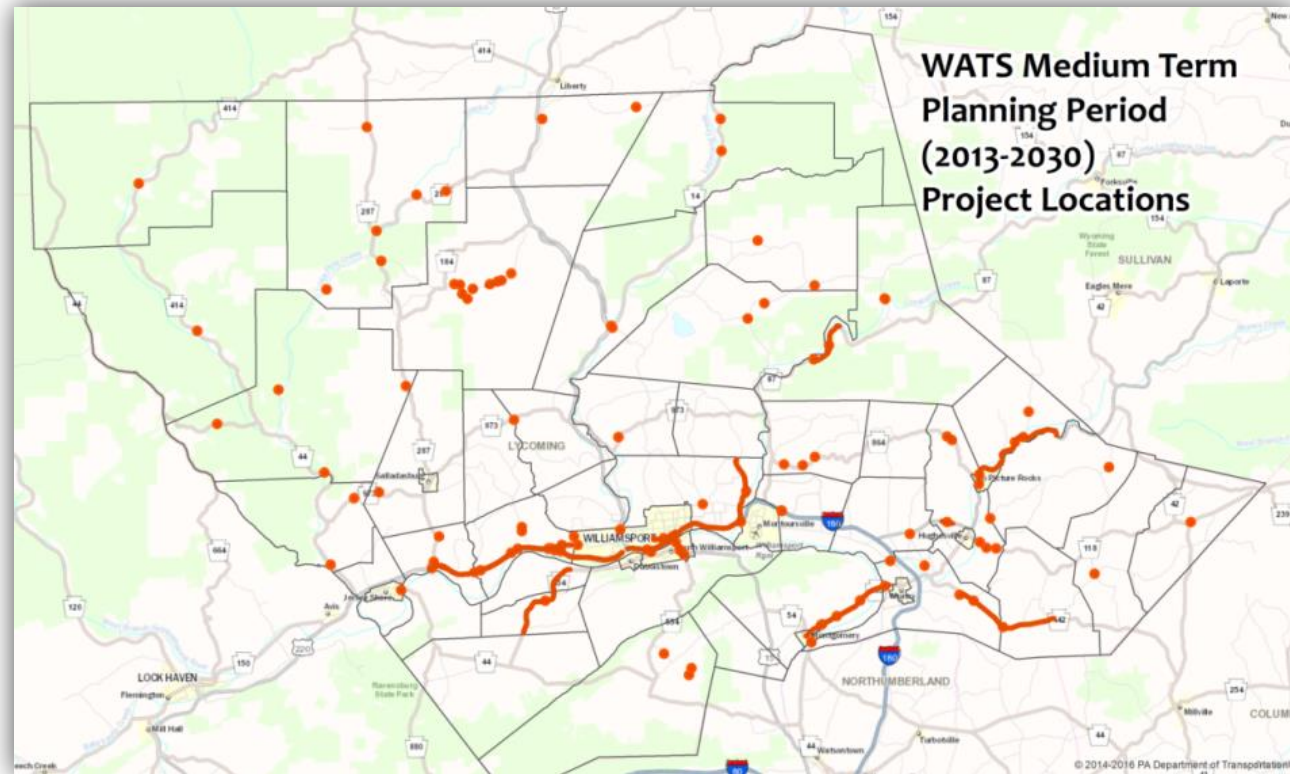
- Highest priority & projects currently underway
- Contains 71 projects
- 26 highway related projects
- 45 Bridge improvement projects
- Has already been deemed fiscally sound



Federal Fiscal Year	NHPP	STP	State Highway (Capital)	State Bridge	Off System Bridges	HSIP	TOTAL
2019	\$3,111,000	\$2,305,000	\$4,648,000	\$2,101,000	\$827,000	\$1,068,000	\$14,060,000
2020	\$3,220,000	\$2,347,000	\$5,128,000	\$2,101,000	\$827,000	\$1,090,000	\$14,713,000
2021	\$3,220,000	\$2,346,000	\$5,457,000	\$2,100,000	\$827,000	\$1,090,000	\$15,040,000
2022	\$3,219,000	\$2,345,000	\$5,995,000	\$2,100,000	\$827,000	\$1,090,000	\$15,576,000
<b>TOTAL</b>	<b>\$12,770,000</b>	<b>\$9,343,000</b>	<b>\$21,228,000</b>	<b>\$8,402,000</b>	<b>\$3,308,000</b>	<b>\$4,338,000</b>	<b>\$59,389,000</b>

# WATS Medium Term

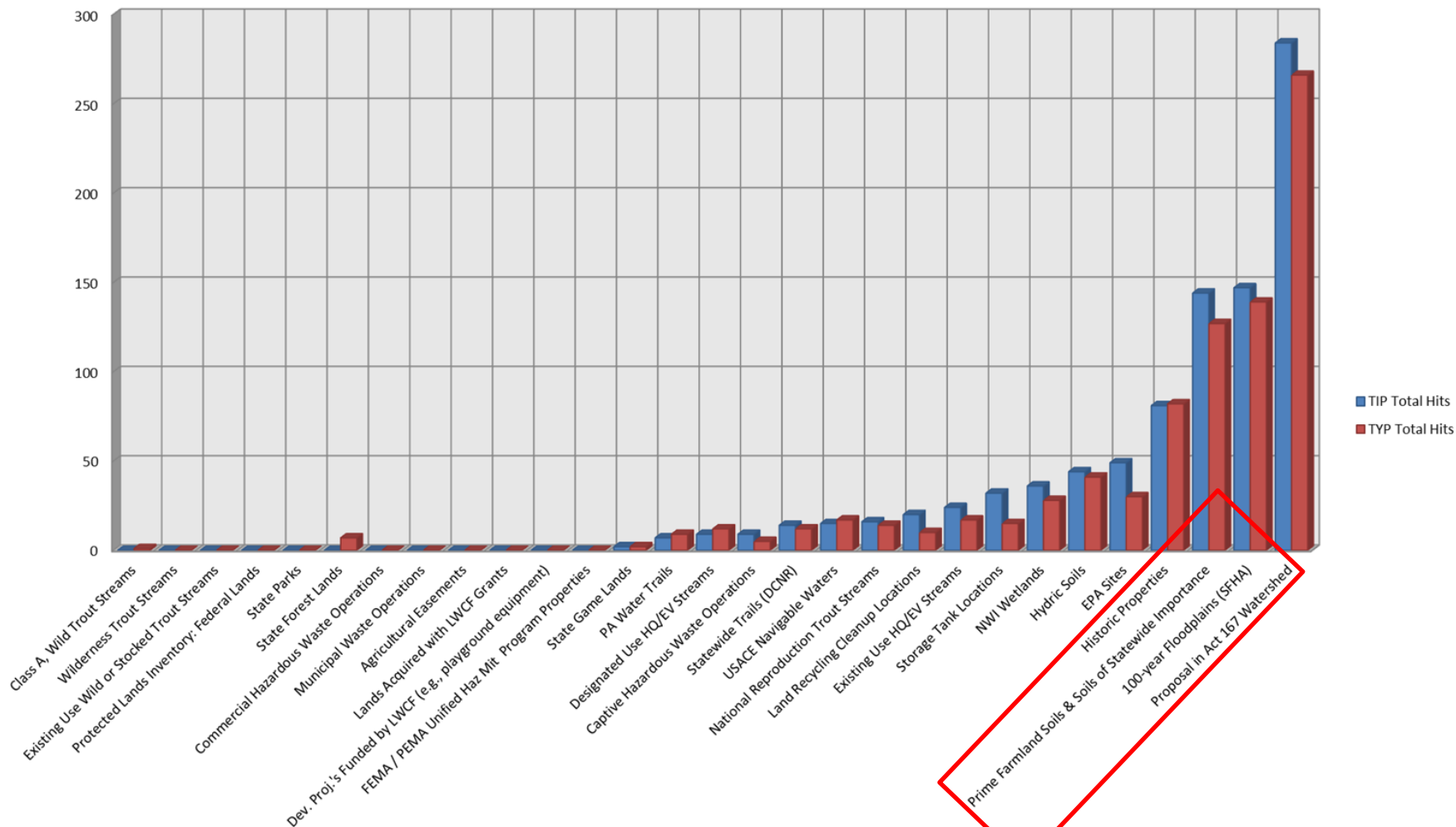
- Includes carry over projects from FFY & items not currently programmed
- Line item reserves are included to fund future asset management and safety projects.
- New projects selected based on PennDOT priorities, PM's, and LRTP guidance
- The WATS medium term projects consist of \$42,029,248 in bridge projects and \$71,454,500 in highway and safety projects.



# Environmental Impact Analysis

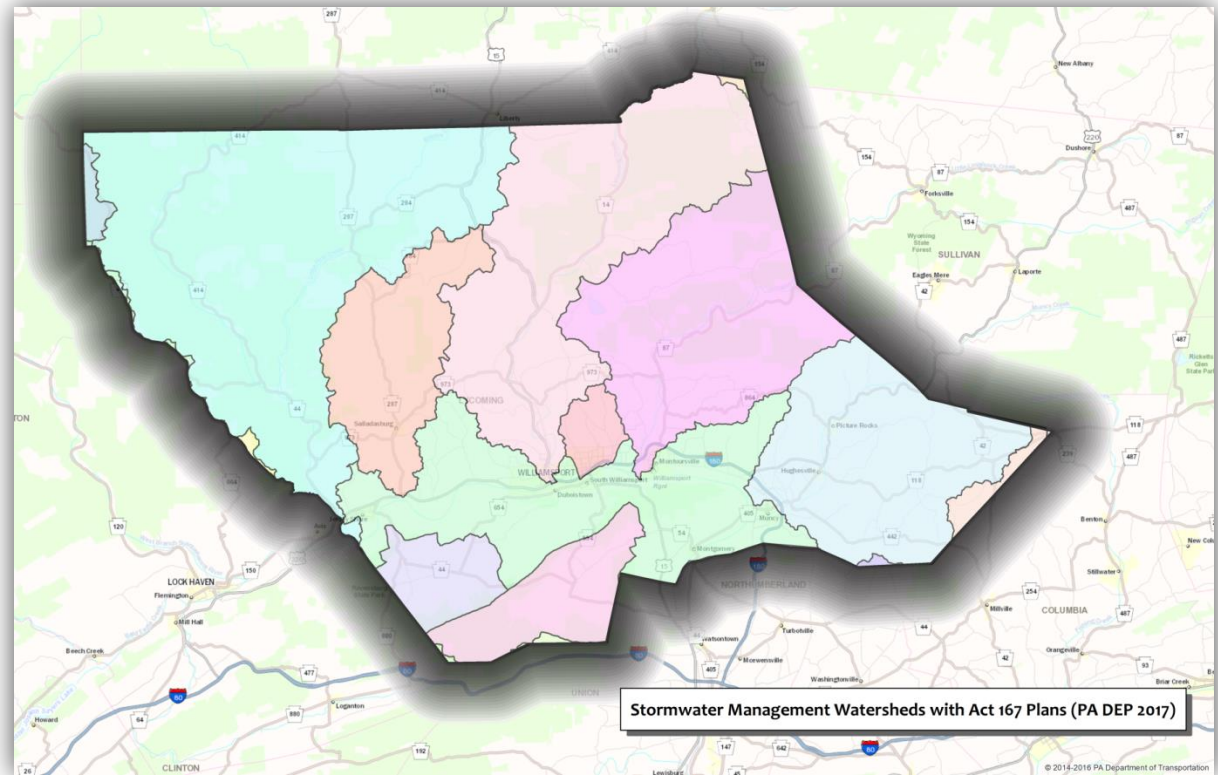
## Performed with PennDOT Guidance

Environmental Impact Analysis



# Stormwater Management

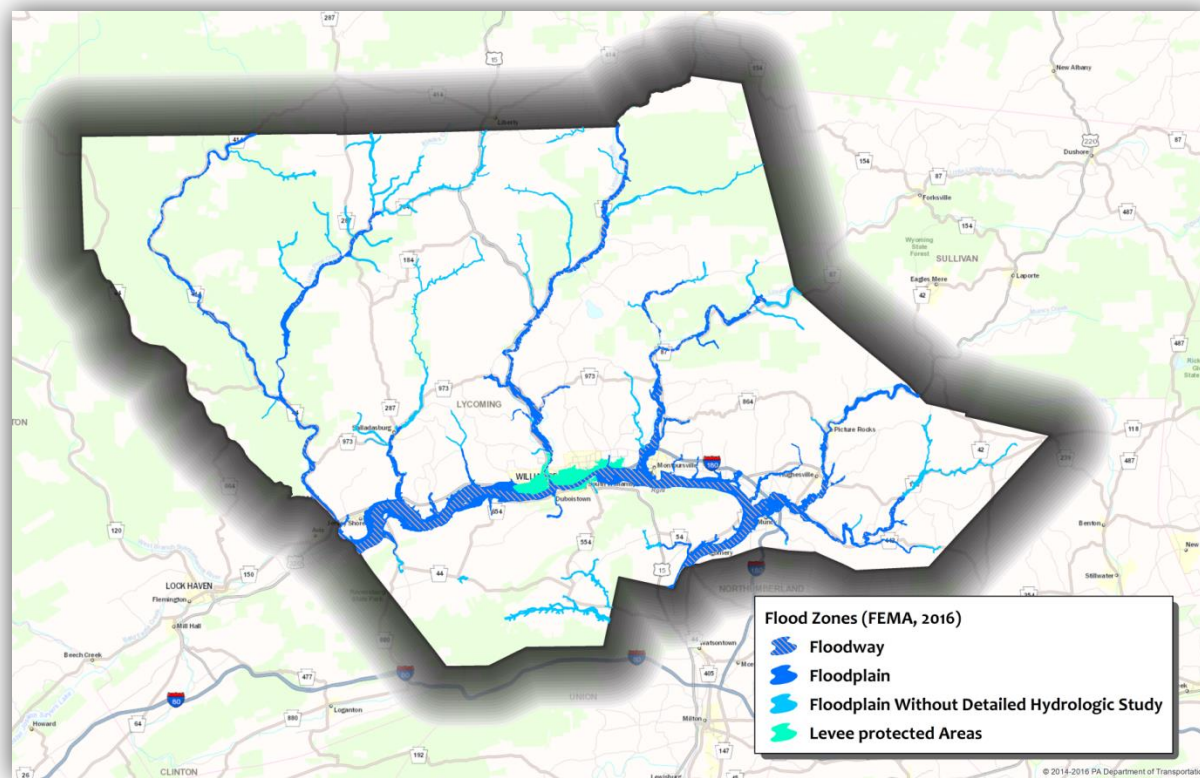
- County-wide Act 167 Stormwater Management Plan was adopted in 2011
- All 52 municipalities have a form of Stormwater regulations
  - Either in a stand alone ordinance or the SLDO





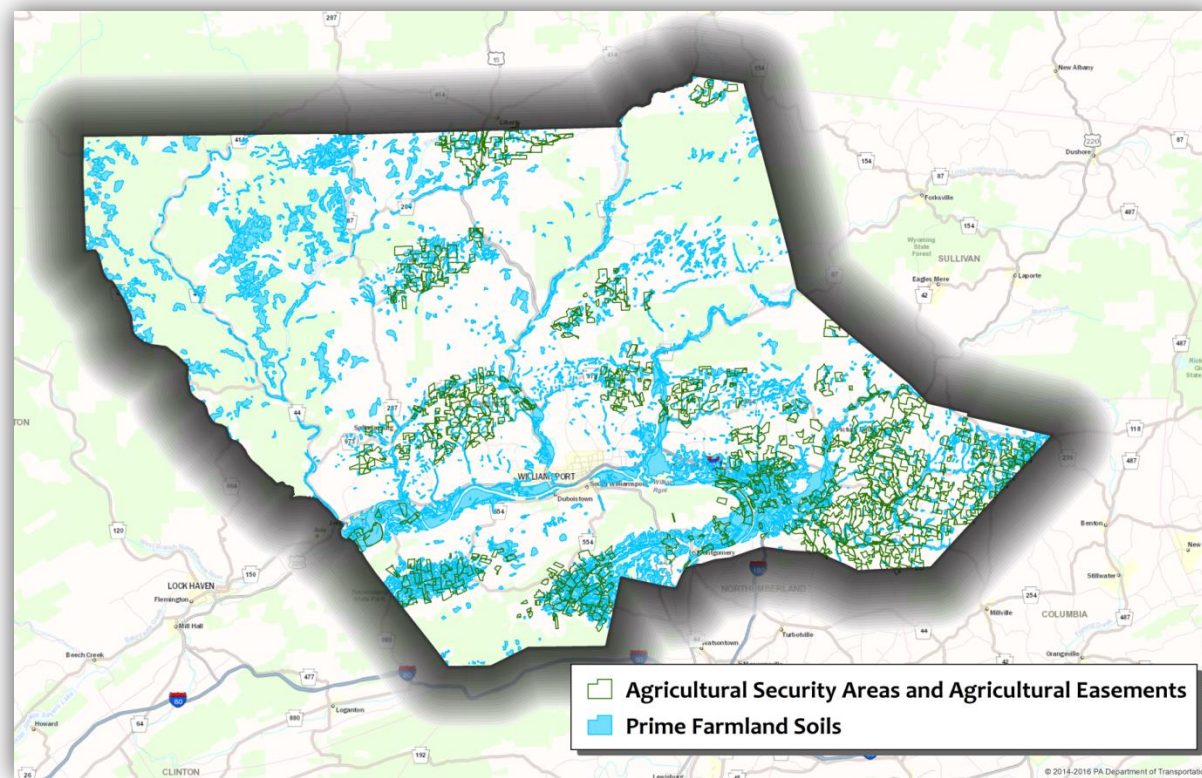
## Floodplains

- With approx. 2,200 miles of stream within the County – regulatory floodplain is a constant concern
- Accurate delineation and floodplain management practices are imperative to reduce hazards
- Lycoming County is active in regulating floodplain development & pursues funding to mitigate flood prone properties



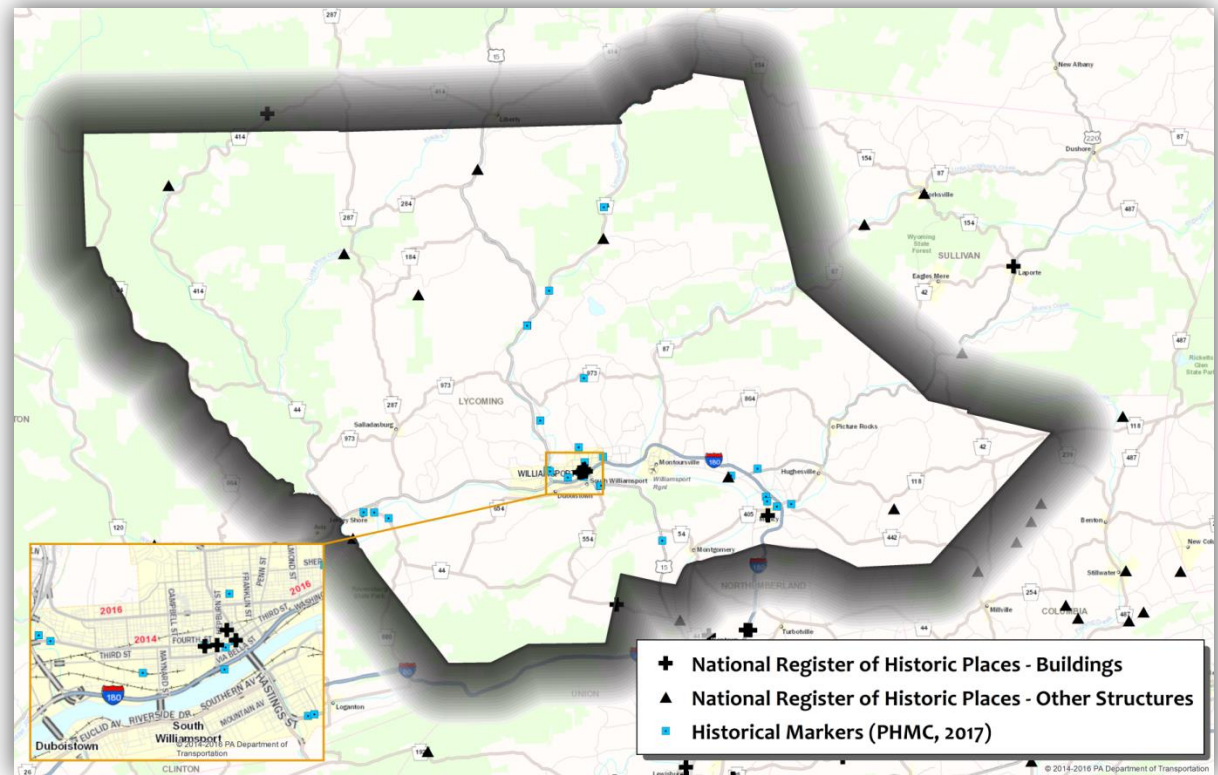
# Agricultural Soils & Preservation Efforts

- The County contains 106,000 ac. of Prime Farmland Soils
  - 13% of total Co. land area
- There are 110,000 ac. classified as Soils of Statewide Importance
  - 14% of total Co. land area
- There are 368,590 ac. currently enrolled the Clean and Green Program
- The County actively tries to identify farmland that should be preserved for agricultural use



# Historic, Archaeological, & Cultural Resources

- 36 properties throughout the County that are either eligible or listed on the National Register of Historic Places
  - 8 of these registered places are architecturally significant bridges
- Muncy Borough and Williamsport have the County's only regulated historic districts
- Notable historic sites include:
  - Ault Site (Native American Village)
  - Original Little League Field



# Environmental Impact

## Mitigation Strategies

- WATS MPO and PennDOT are **primarily focused on asset management and maintenance**
- A vast majority of the projects contained in this LRTP involve **minor or no right-of-way acquisition**
  - Substantial mitigation efforts are not likely to be required
  - Small scale mitigation located at individual project locations as needed



# WATS LRTP Public Review Schedule

<u>Public Meeting</u>	<u>Date/Time</u>	<u>Place</u>	<u>Topics Discussed</u>
Lycoming County Board of Commissioners	11/1/18 – 10:00 AM	1 <sup>st</sup> Floor Briefing Room Executive Plaza, 330 Pine St, Williamsport PA	Presentation of Final Draft of Plan
Lycoming County Planning Commission	11/15/18 – 6:00 PM	1st Floor Briefing Room Executive Plaza, 330 Pine St, Williamsport PA	Presentation of Final Draft of Plan
WATS Technical Committee	12/3/18 - 10:00 AM	1st Floor Briefing Room Executive Plaza, 330 Pine St, Williamsport PA	Discuss Incorporating Public Comments into Final Plan
WATS Coordinating Committee	12/17/18 - 1:00 PM	1st Floor Briefing Room Executive Plaza, 330 Pine St, Williamsport PA	Plan Adoption

# Review the Plan on the Web

- [www.lyco.org/lrtp](http://www.lyco.org/lrtp)
- Full Text of Plan
- Interactive Mapping
- Presentations
- Staff Contact Info

The screenshot shows the Lycoming County Government website. The header includes the Lycoming County seal and the text "LYCOMING COUNTY GOVERNMENT Lyco.org Committed To Our Community". A search bar is in the top right. A navigation menu contains: Top 10 Links, Departments, Elected Officials, Courts, Public Safety, Additional Links, and Re-Entry Coalition. A large blue banner reads "Welcome to Lycoming County, Pennsylvania" with a scenic photo of a green valley. Below the banner is a breadcrumb trail: Departments > Planning and Community Development > Transportation Planning > Long Range Transportation Plan. There are "Register" and "Logi" links. The main content area is titled "Long Range Transportation Plan 2018 Update". On the left is a sidebar for "Planning & Community Development" with contact information: Mail (48 West Third Street, Williamsport, PA 17701), Location (330 Pine Street, Williamsport, PA 17701), Phone (570) 320-2130, Fax (570) 320-2135. Links include Location Map, Staff Contact Page, PCD Annual Reports, Comprehensive Plan, and Municipal Services Division. The main content lists:
 

- [What is a Long Range Transportation Plan \(LRTP\)?](#)
- [What Does the LRTP Do?](#)
- [LRTP Plan Update Overview](#)
- [Mapping](#)
- [Presentations](#)
- [Important Dates](#)
- [Contact](#)

 An image shows a winding road with numbered markers and a compass. Below the list is a paragraph: "Every five years, as required by federal law, the Lycoming County Department of Planning and Community Development updates the Williamsport Area Transportation Study (WATS) Metropolitan Planning Organization (MPO) Long Range Transportation Plan (LRTP). The current LRTP was adopted in 2013. The plan is currently being updated and the new plan will be adopted by the end of 2018." At the bottom is a link: [What is a LRTP?](#)

# Questions?

Mark Murawski  
Transportation Supervisor  
570-320-2138  
[mmurawski@lyco.org](mailto:mmurawski@lyco.org)



John Lavelle  
Transportation Planner  
570-320-2141  
[jlavelle@lyco.org](mailto:jlavelle@lyco.org)

