



LYCOMING 2030: PLAN THE POSSIBLE

Greater Williamsport Alliance PAT Public Hearing

(City of Williamsport, S. Williamsport & Duboistown Boroughs,
Armstrong, Loyalsock and Old Lycoming Townships)

June 14, 2017

6:30 PM

Trade & Transit Center II





AGENDA

- I. Welcome and Introductions
- II. Comprehensive Plan & Plan Process
- III. Plan Review
- IV. Q & A



What is a Comp Plan?

- The GWA Comprehensive Plan is a general policy guide for the physical, social, and economic development based on the desires of the six municipalities within the planning area
 - Informs current/future municipal officials
 - Prioritizes major projects
 - Details desired land use patterns
 - **Not a regulatory document**

- Plan was last updated in 2005
 - Must be reviewed every 10 yrs.

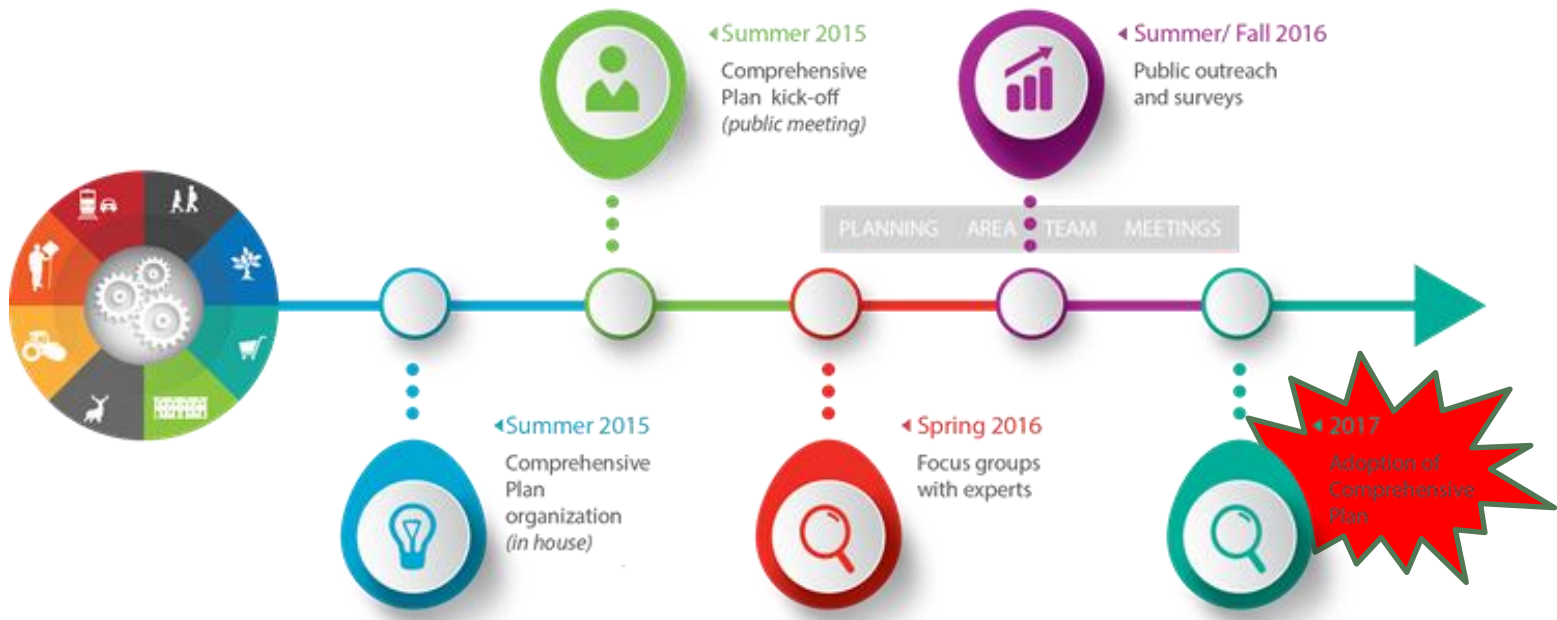


How is this plan different?

- The 2005 Comprehensive Plan will remain in place since most of its information has been determined to still be relevant
- The plan that we are reviewing tonight should be considered as the **Implementation Arm** of the 2005 plan
 - Major emphasis on implementation



PLAN PROCESS

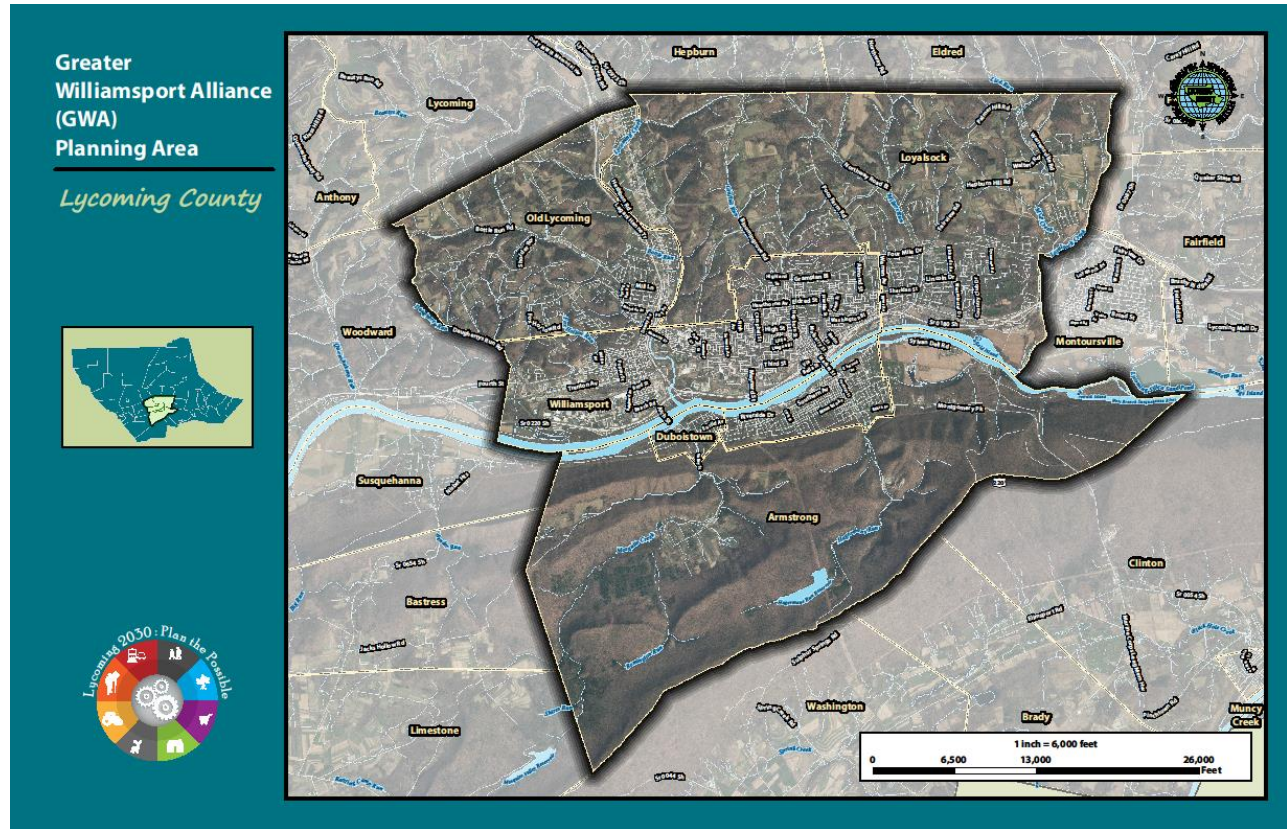




PLAN PROCESS



Planning Area Team – (Municipal Representation)



Comprised of “Growth Communities” along the Susquehanna River:

- City of Williamsport
- Borough of Duboistown
- Borough of S. Williamsport
- Armstrong Township
- Loyalsock Township
- Old Lycoming Township



Planning Area Team (PAT)

- The GWA PAT was organized prior to the 2005 Comp Plan
- PAT members ***put forth great efforts*** over the course of this update process:
 - Met 7 times since 10/15
 - Reviewed documents outside of meetings and gave feedback on working plan drafts



Planning Area Team (Community/Regional Representation)

The following organizations were also represented:

- Industrial Properties Corporation
- Loyalsock Township School District
- Lycoming Arts
- Lycoming College
- Lycoming County Historical Society
- Lycoming County Water and Sewer Authority
- Penn College of Technology
- Preservation Williamsport
- River Valley Transit
- South Williamsport Police Dept
- Susquehanna Regional EMS
- UPMC – Susquehanna
- Williamsport Area School District
- Williamsport Bicycle Committee
- Williamsport Bureau of Fire
- Williamsport Business Association
- Williamsport City Police
- Williamsport Lycoming Chamber of Commerce
- Williamsport Water and Sewer (WMWA-WSA)



The PAT's Role

- Helped to determine what issues in the 2005 plan ***are and are not still relevant*** and what has changed since then.
- Discuss current strengths, weaknesses, opportunities, and threats and most important issues to GWA planning area communities
- Prioritized ***issues*** they believed should be the focus of our efforts over the next 10 years and what ***actions*** would positively impact those issues (project/program/initiative)





Information Gathering:

- In order build a basis of understanding current issues & trends that the County is facing the following efforts were made:
 - Public outreach meetings
 - Facilitated focus groups with subject matter experts
 - Public survey – circulated on-line and in-person



Information Gathering: Public Outreach

- 4 public meetings held starting in September 2015:
 - Jersey Shore
 - Lewis Township
 - Hughesville
 - City of Williamsport
- Goal: to engage the public, collect feedback and inform public of the Comp Plan update process

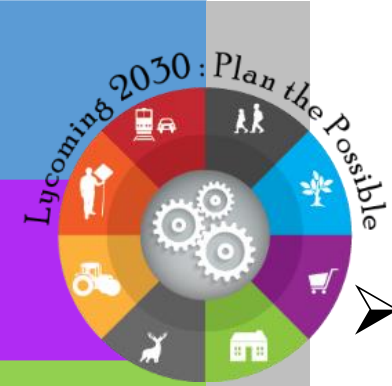




Focus Groups

➤ Focus Groups held in spring 2016

- Community Development
- Economic Development
(manufacturing and developers separately)
- Heritage, Arts, and Culture
- Natural Resources and Agriculture
- Transportation
- Public Safety
- Youth Day



Public Survey

- Over 1,000 responses received from a combination of on-line and in-person intercept surveys
 - The on-line survey received 936 respondents
 - 733 respondents from GWA alone
- Top 5 issues from public survey (in order):
 - Education and Jobs
 - Crime (and Drugs)
 - Roads, Bridges and Sidewalks
 - Parks and Trails
 - Downtowns (the health of)



Public Survey

Results from 17701, 17702, and 17754 zip codes

- Culture, recreation, and scenic beauty were the themes of the top 6 most positively commented on categories by citizens of the GWA planning area. Felt important to the quality of life.





Common Issue Statements

- 20 Thematic Issues derived from surveys and Planning Team work sessions
- 14 selected by one or more Multi- Municipal Planning Areas as a Priority Issue
- 9 identified as priority issues for the GWA Planning Area



2016 Comp Plan Focus

- Focus on priorities, implementable outcomes, projects of regional significance
- Includes specific projects and a recommended path forward to achieve success
- The GWA Plan will be consistent with the countywide Comprehensive Plan currently underway and expected to be adopted by the County Commissioners later this year



GWA Comp Plan

**2016 MULTI-MUNICIPAL
COMPREHENSIVE PLAN REVIEW
AND
IMPLEMENTATION STRATEGY**
Greater Williamsport Alliance Planning Area
Lycoming County, Pennsylvania



Plan Organization

- **Plan Overview:** Brief summary introduction with community profile and background information
- **Implementation Strategy:** Description of Issues, Identification of Projects, Implementation Steps, and Funding Strategies
- **Growth Area and Future Land Use Maps**
- **Appendices**



PAT Priority Issues and Projects

Priority Issue 1: The economy is changing and our communities and workforce are not optimally positioned to realize our untapped economic potential and become more resilient.

Top Viable Project: Certification of the Flood Protection System





PAT Priority Issues and Projects

Priority Issue 2: Fragmentation of local government in Pennsylvania is a barrier to efficient delivery of some public services.

Top Viable Project: Examine Cost Effectiveness and personnel Efficiency of Fire and EMS services in the GWA Planning Area as a Prerequisite to the County EMS Response Plan





PAT Priority Issues and Projects

Priority Issue 3: Outdoor recreation resources are not fully developed, protected, and promoted.

Top Viable Project 1: Susquehanna Riverwalk Extension and Access Improvements

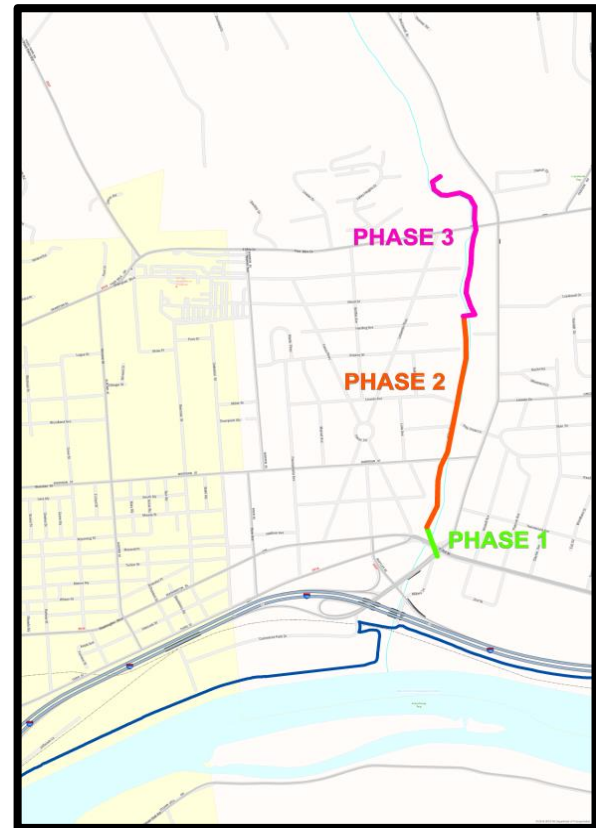




PAT Priority Issues and Projects

Priority Issue 3: Outdoor recreation resources are not fully developed, protected, and promoted.

Top Viable Project 2:
Millers Run Greenway

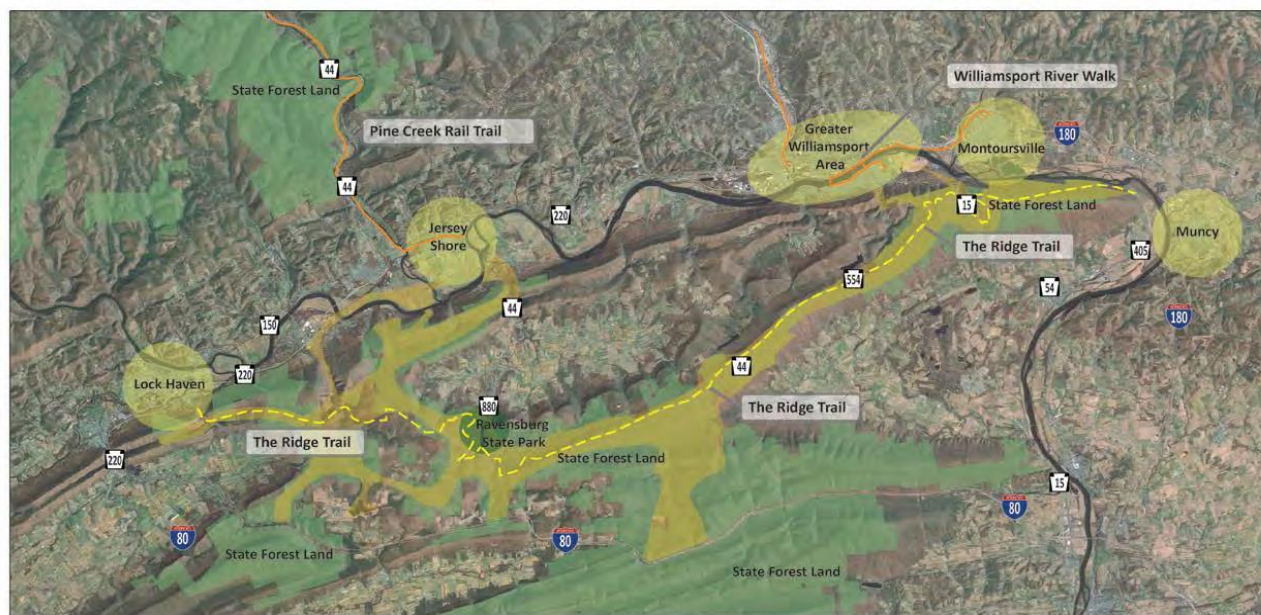




PAT Priority Issues and Projects

Priority Issue 3: Outdoor recreation resources are not fully developed, protected, and promoted.

Top Viable Project 3: Bald Eagle Mountain Ridge Trail





PAT Priority Issues and Projects

Priority Issue 4: Our multi-modal transportation system, particularly the airport, has deficiencies in safety, physical condition, and availability of facilities in some areas of the County.

Top Viable Project 1: Williamsport Regional Airport Terminal





PAT Priority Issues and Projects

Priority Issue 4: Our multi-modal transportation system, particularly the airport, has deficiencies in safety, physical condition, and availability of facilities in some areas of the County.

**Top Viable Project 2: Phase IV
Pathway to Health**



**Williamsport Pathway To Health
Traffic & Streetscape Improvements**





PAT Priority Issues and Projects

Priority Issue 5: Significant cultural and historical resources are not adequately documented, protected, and promoted.

Top Viable Project: Lycoming Arts' Culture, Arts, and Heritage Trails Initiative





PAT Priority Issues and Projects

Priority Issue 6: Drugs, particularly heroin and opioids, are creating significant social, economic, public health, and safety problems across the County.

Top Viable Project: Support existing programs

- Project Bald Eagle
- County Re-entry Programing
- Law Enforcement and Public Education Programs
- Drug & Alcohol Treatment Programs



PAT Priority Issues and Projects

Priority Issue 7: Downtown and village center areas across the County are not thriving or achieving their maximum potential.

Top Viable Project: Implement the Old City/East Third Street Gateway Redevelopment Strategy





PAT Priority Issues and Projects

Priority Issue 8: Water quality is vital but is also vulnerable to a multitude of threats.

Top Viable Project 1: Land Conservation – Sylvan Dell Preserve Land Acquisition





PAT Priority Issues and Projects

Priority Issue 8: Water quality is vital but is also vulnerable to a multitude of threats.

**Top Viable Project 2:
Sourcewater Protection Program**





PAT Priority Issues and Projects

Priority Issue 8: Water quality is vital but is also vulnerable to a multitude of threats.

Top Viable Project 3: Improve the Urban Forest

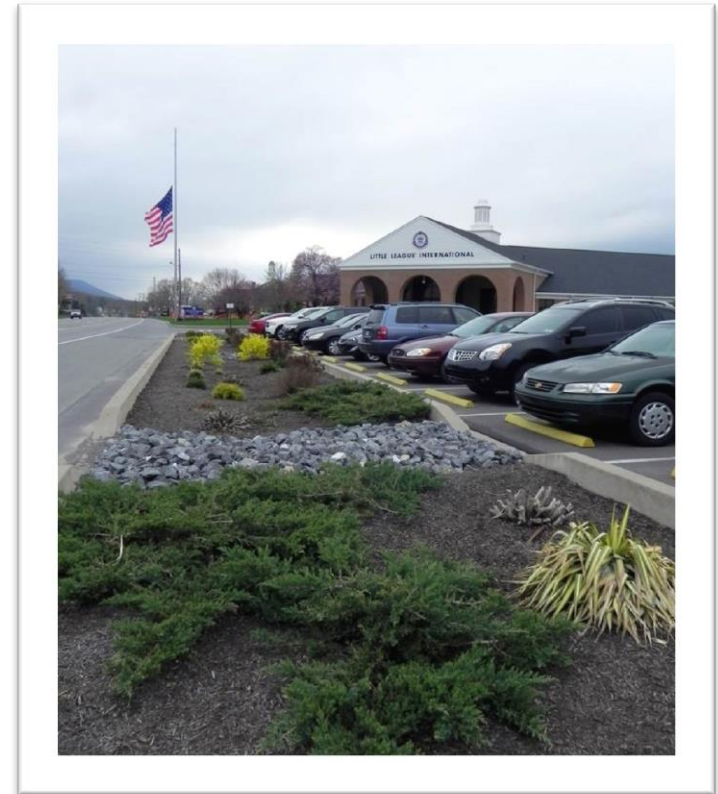




PAT Priority Issues and Projects

Priority Issue 9: Water, sanitary sewer, and storm water infrastructure systems are not sufficient across the County to meet all needs.

Top Viable Project 1:
Implement the MS4
Chesapeake Bay Pollution
Reduction Plan



MS4: Municipal Separate Storm Sewer System



NEXT STEPS

- Public Comment Period
 - 45 days
 - Minor edits by PCD staff
 - Major and questionable edits out to municipalities
 - Concludes on July 31st

- Adoption by each municipality may begin at their regularly scheduled meeting following 7/31/2017



QUESTIONS OR COMMENTS?

Contacts:

Kim Wheeler, Deputy Director
570-320-2134, kwheeler@lyco.org

Website: www.lyco.org/CompPlan

