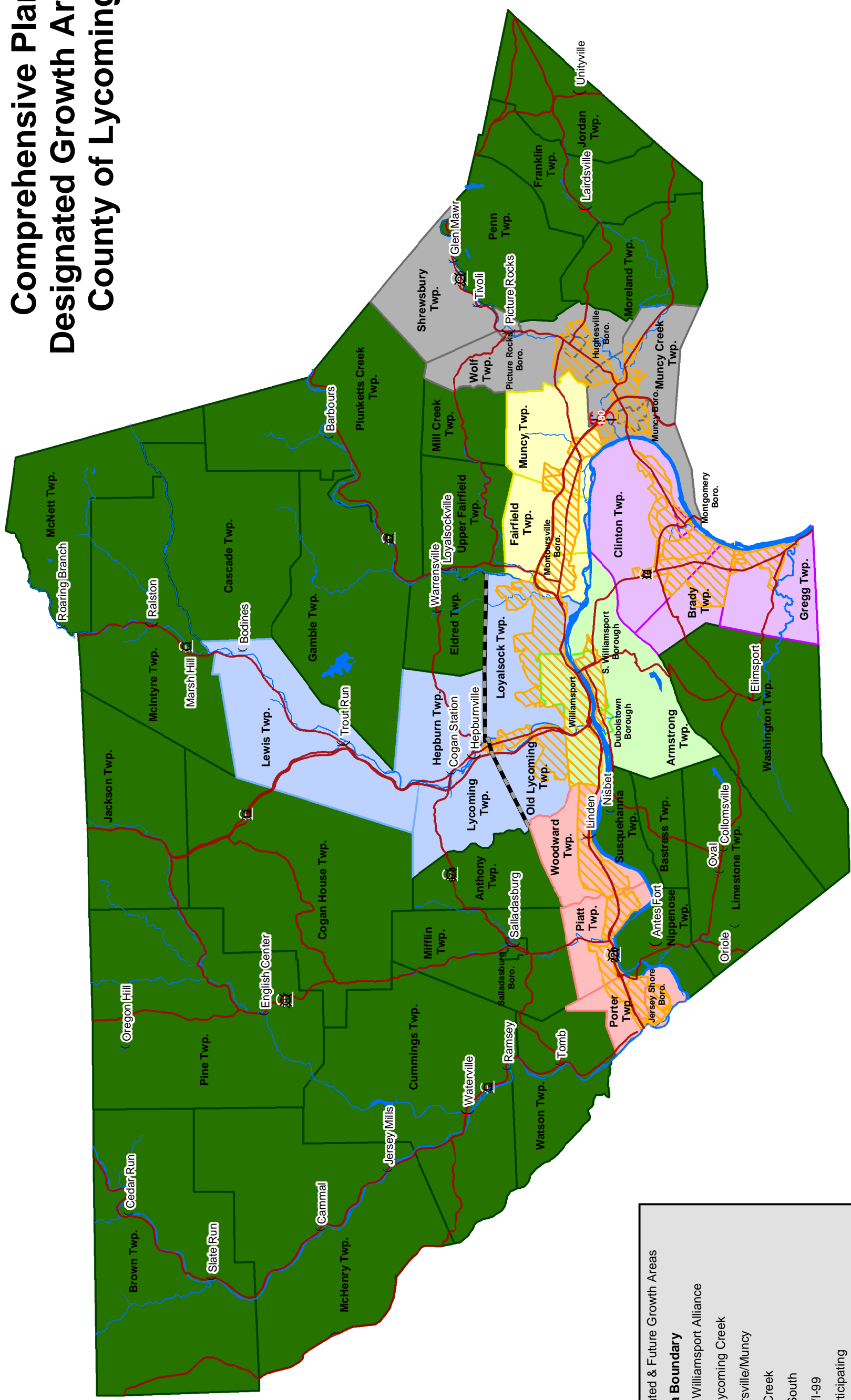


Comprehensive Plan Designated Growth Areas County of Lycoming



	Designated & Future Growth Areas
	Greater Williamsport Alliance
	Lower Lycoming Creek
	Montoursville/Muncy
	Muncy Creek
	US-15 South
	US-220/I-99
	Non-participating
	Northern Boundary for GWA Planning Area
	Major Roads
	Main Streams
	Rural Center
	Village

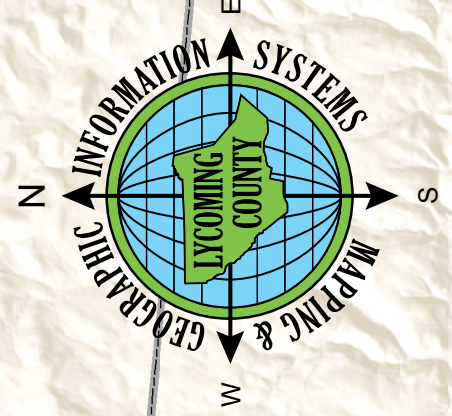
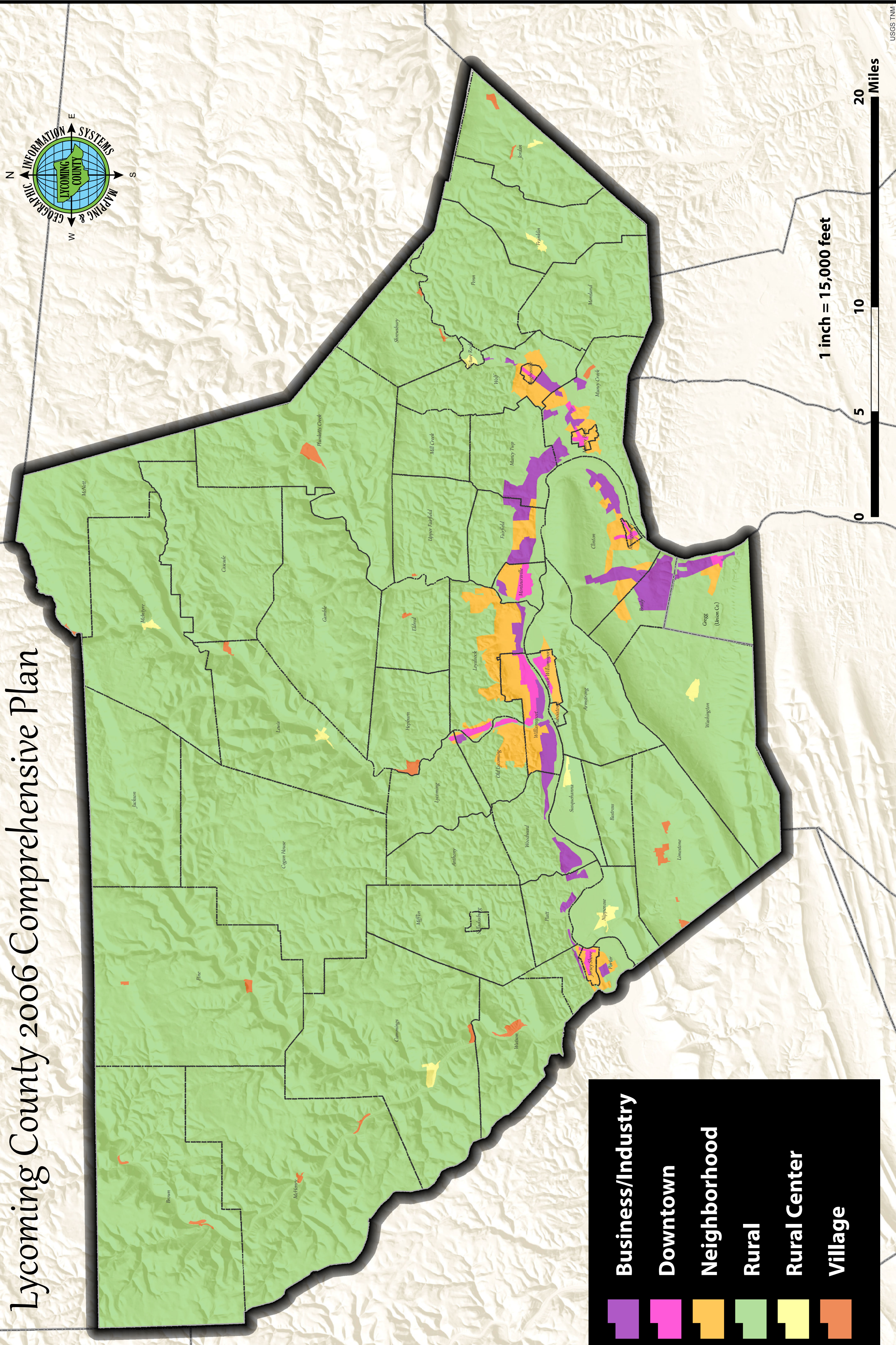
* Map includes Gregg Township, Union County

2004

Miles

Designated Future Land Use

Lycoming County 2006 Comprehensive Plan



Business/Industry

Downtown

Neighborhood

Rural

Rural Center

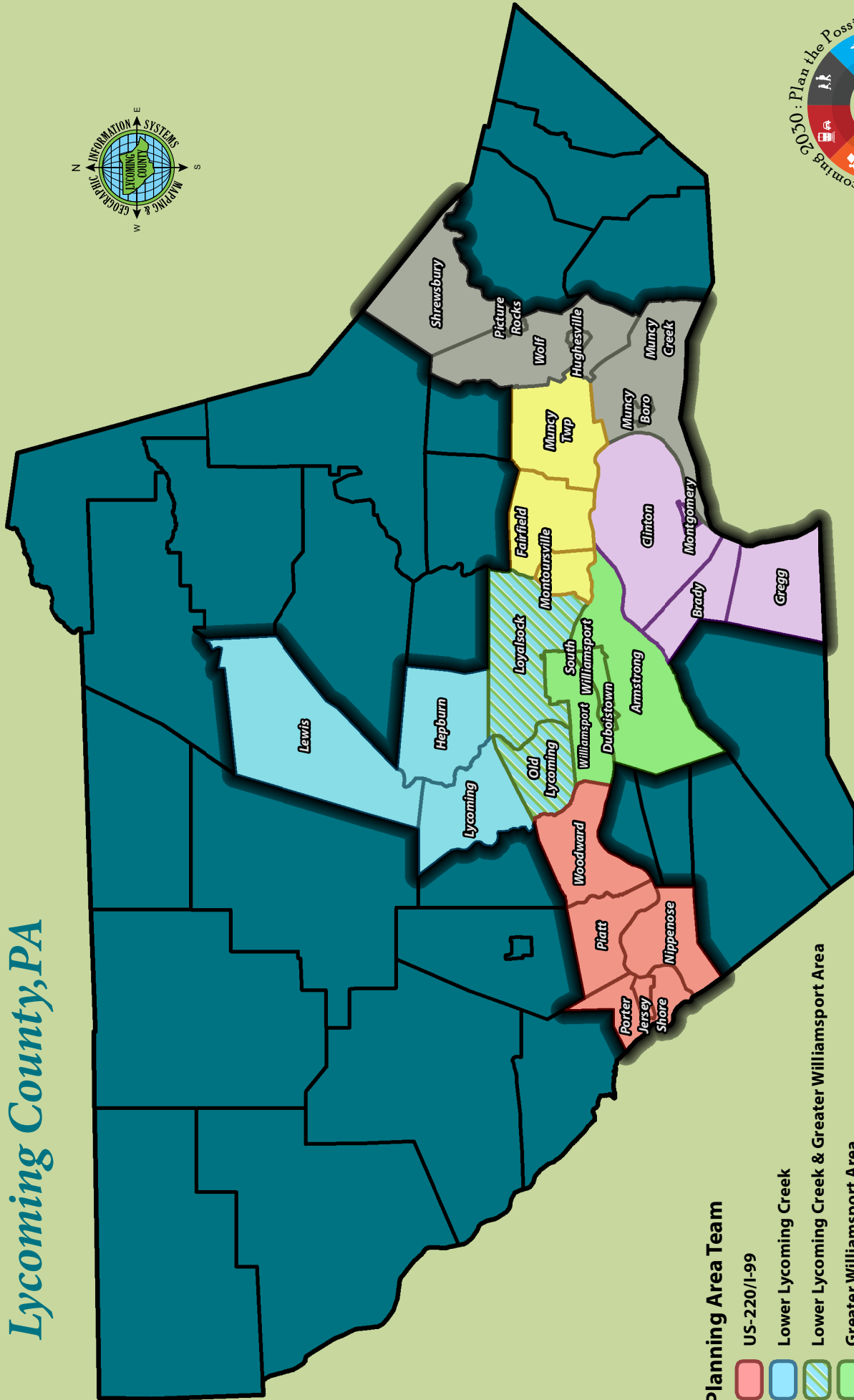
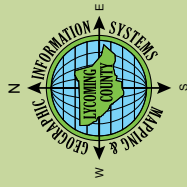
Village

1 inch = 15,000 feet

0 5 10 20 Miles

Growth Planning Areas

Lycoming County, PA



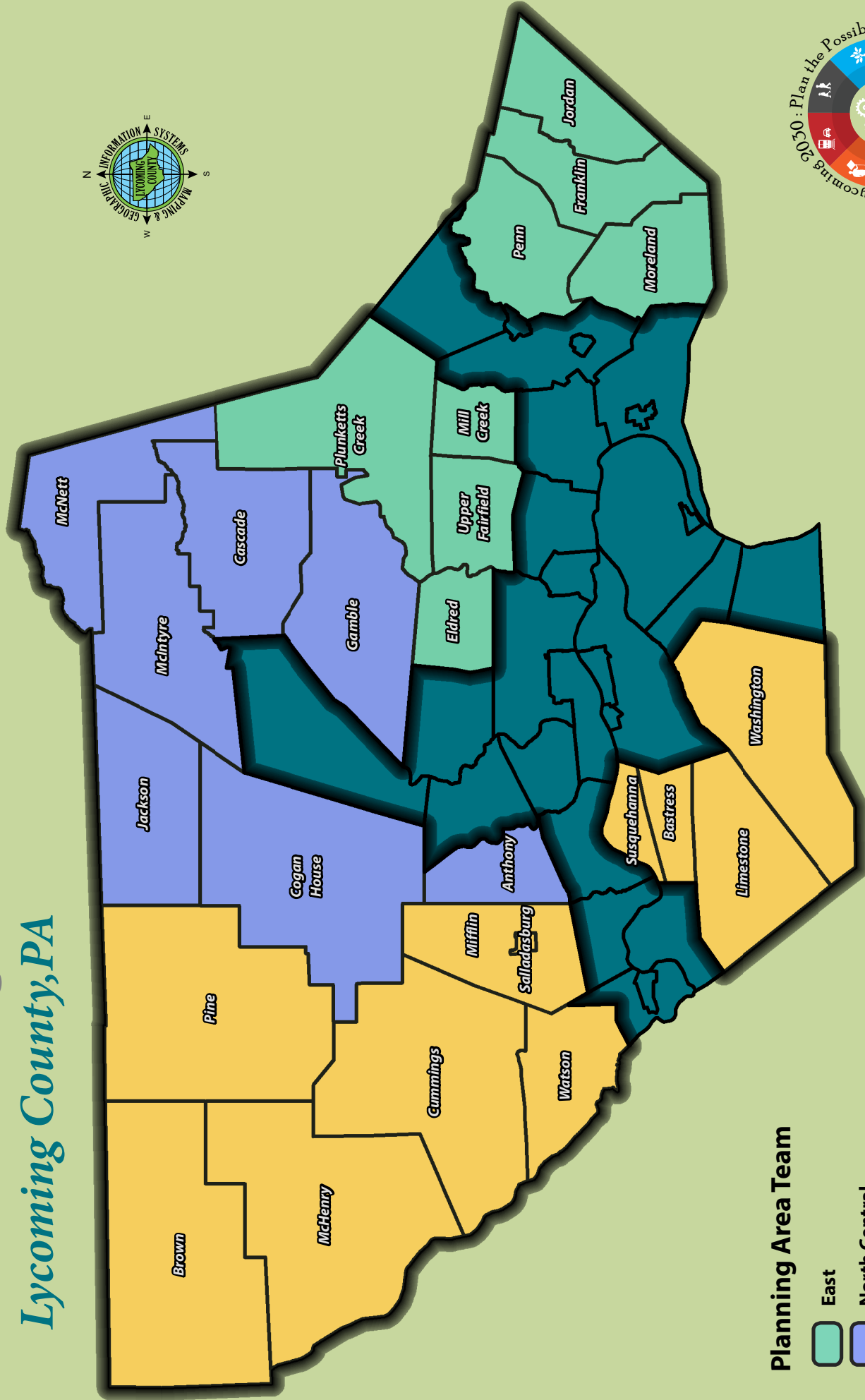
Planning Area Team

- US-220/I-99
- Lower Lycoming Creek
- Lower Lycoming Creek & Greater Williamsport Area
- Greater Williamsport Area
- Montoursville/Muncy
- US-15 South
- Muncy Creek



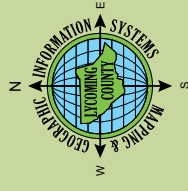
Rural Planning Areas

Lycoming County, PA



Planning Area Team

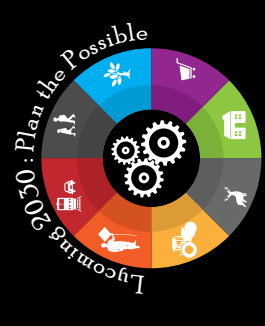
- East
- North Central
- West



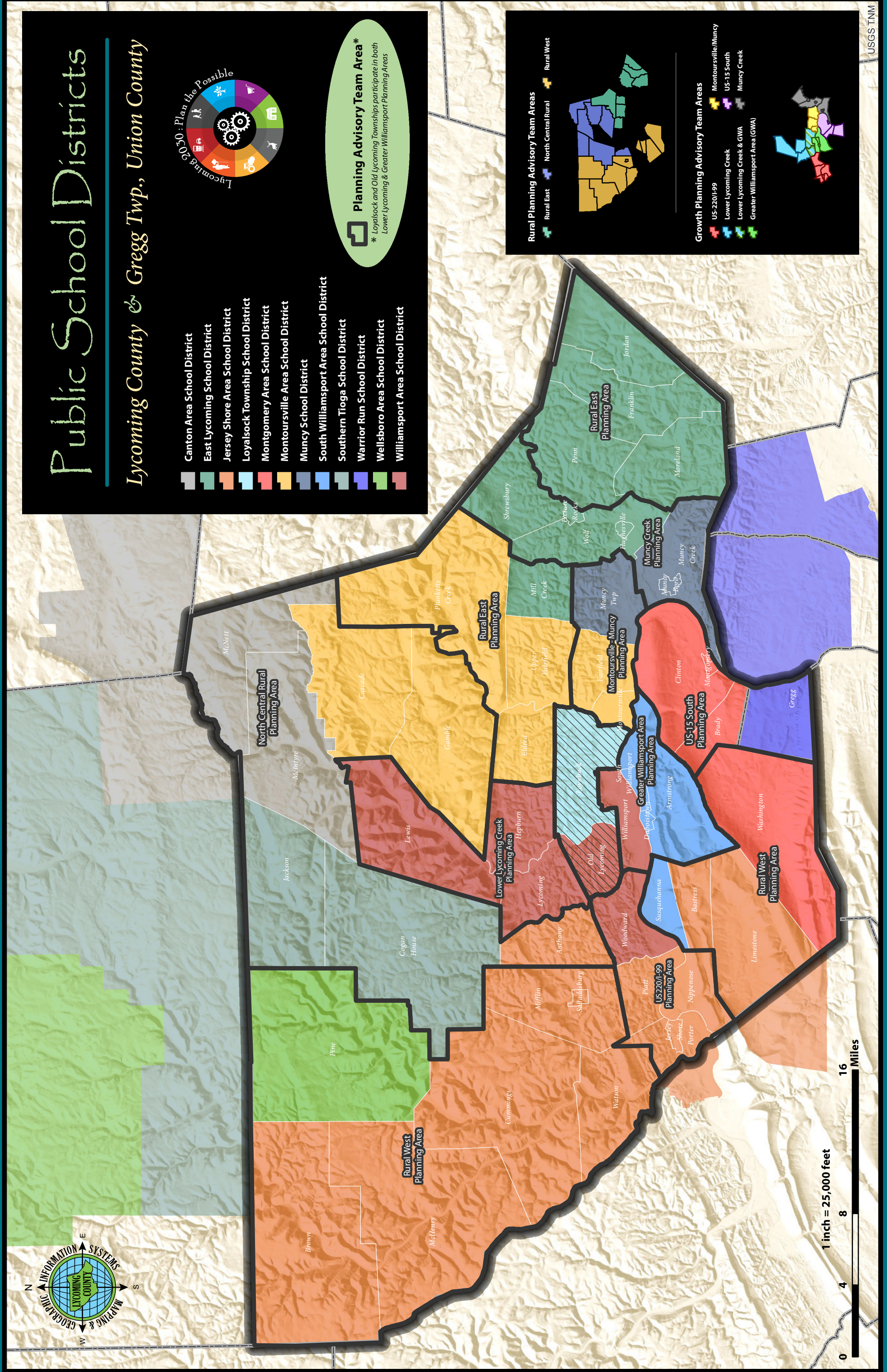
Public School Districts

Lycoming County & Gregg Twp., Union County

- Canton Area School District
- East Lycoming School District
- Jersey Shore Area School District
- Loyalsock Township School District
- Montgomery Area School District
- Montoursville Area School District
- Muncy School District
- South Williamsport Area School District
- Southern Tioga School District
- Warrior Run School District
- Wellsboro Area School District
- Williamsport Area School District



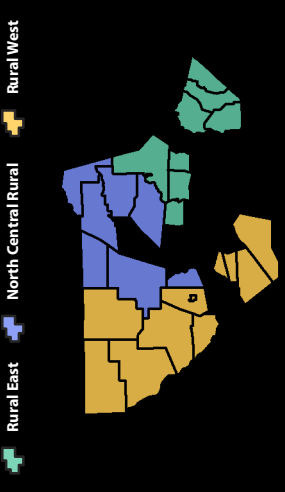
Planning Advisory Team Area *
 * Loyalsock and Old Lycoming Townships participate in both Lower Lycoming & Greater Williamsport Planning Areas



1 inch = 25,000 feet

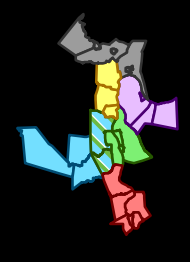


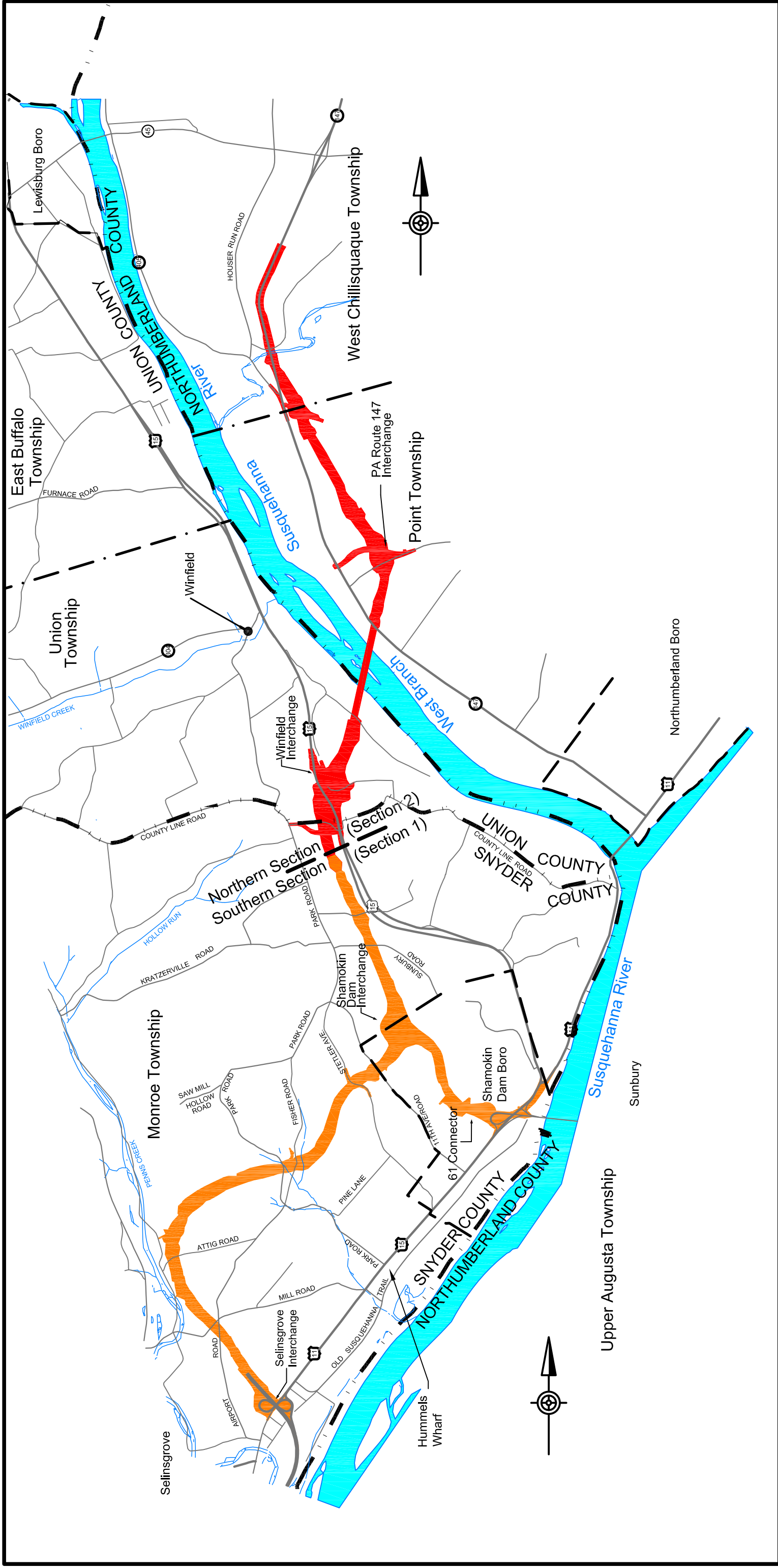
Rural Planning Advisory Team Areas



Growth Planning Advisory Team Areas

- US-220/I-99
- Lower Lycoming Creek
- Lower Lycoming Creek & GWA
- Greater Williamsport Area (GWA)
- Montoursville/Muncy
- US-15 South
- Muncy Creek





Central Susquehanna Valley Transportation Project

Project Overview

Legend

- Southern Section (Section 1)
- Northern Section (Section 2)
- Borough Boundaries

NOTE:
The proposed alignment shown on this map represents the design as of the May, 2006 approval of the re-evaluation of the Final Environmental Impact Statement.

Scale in Feet
0 2000 4000 6000