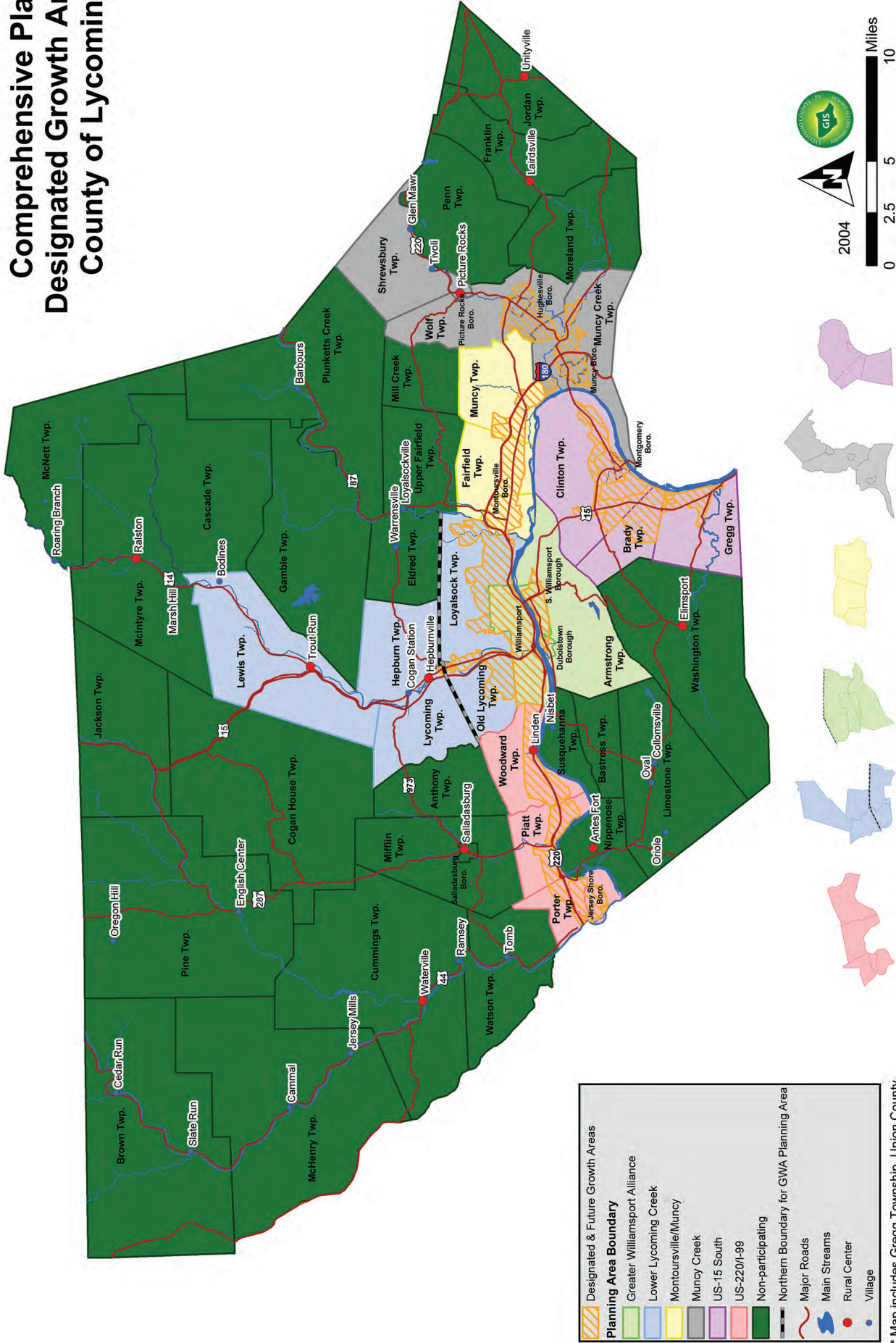


Appendix D

Reference Maps

1. 2006 Designated Growth Area Map
2. 2006 Designated Future Land Use Map
3. 2016 Multi-Municipal Planning Areas Map
4. 2016 Rural Planning Areas Map
5. Lycoming County Public School Districts
6. Major Waterways
7. Known Cell Tower Locations
8. Marcellus Gas Extraction in Lycoming County
9. Lycoming County Housing Affordability
10. Lycoming County Outdoor Recreation Resources
11. Central Susquehanna Valley Transportation Project Map
12. Lycoming County Water Quality
13. Sylvan Dell Conservation Project Area & Natural Resources

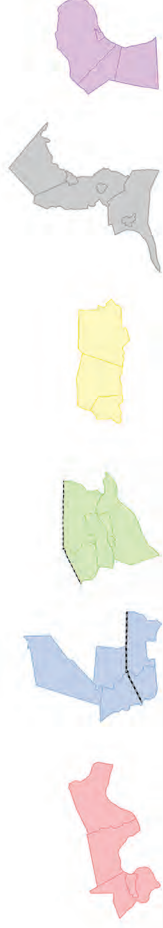
Comprehensive Plan Designated Growth Areas County of Lycoming



	Designated & Future Growth Areas
	Greater Williamsport Alliance
	Lower Lycoming Creek
	Montoursville/Muncy
	Muncy Creek
	US-15 South
	US-220/I-99
	Non-participating
	Northern Boundary for GWA Planning Area
	Major Roads
	Main Streams
	Rural Center
	Village



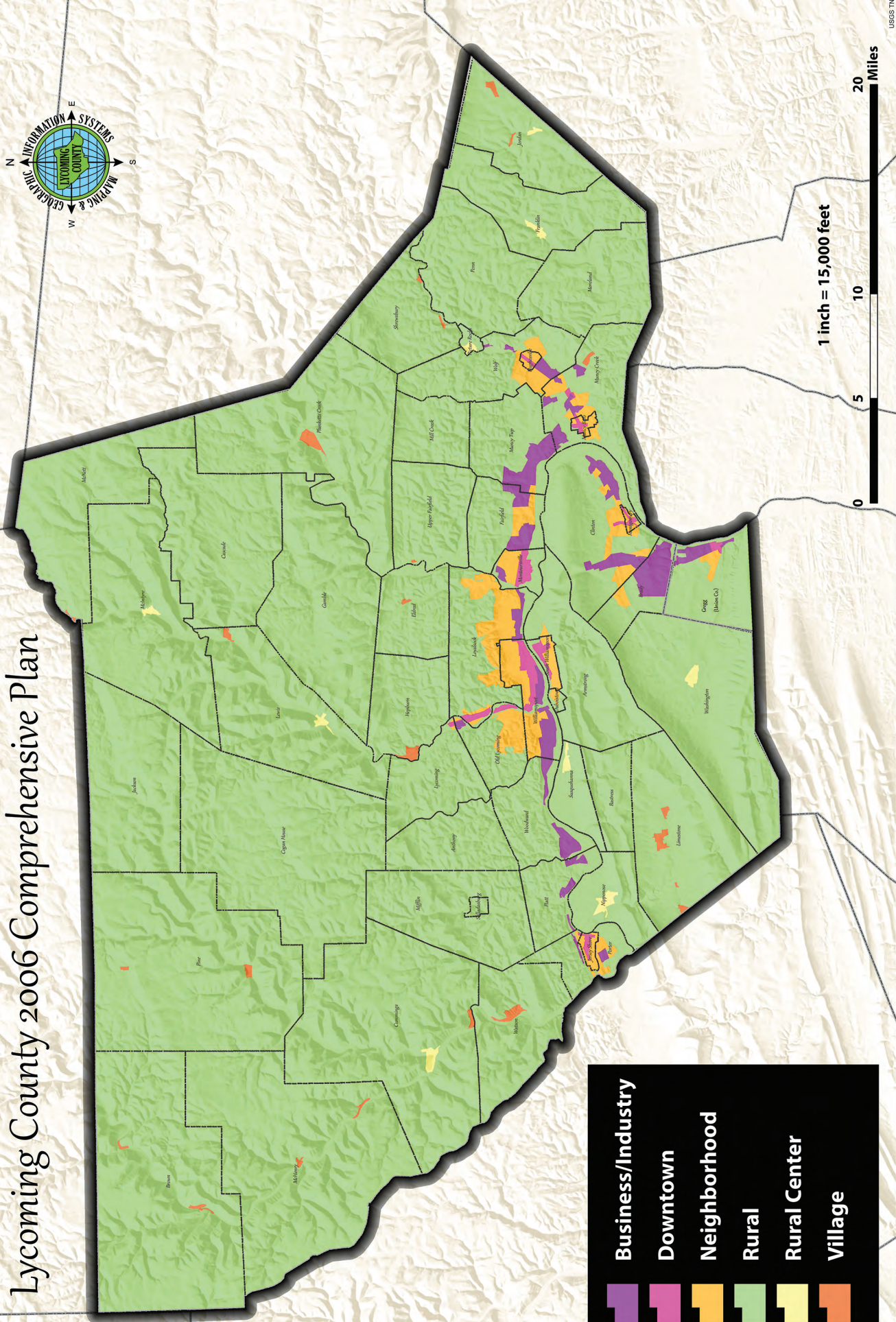
2004



* Map includes Gregg Township, Union County

Designated Future Land Use

Lycoming County 2006 Comprehensive Plan



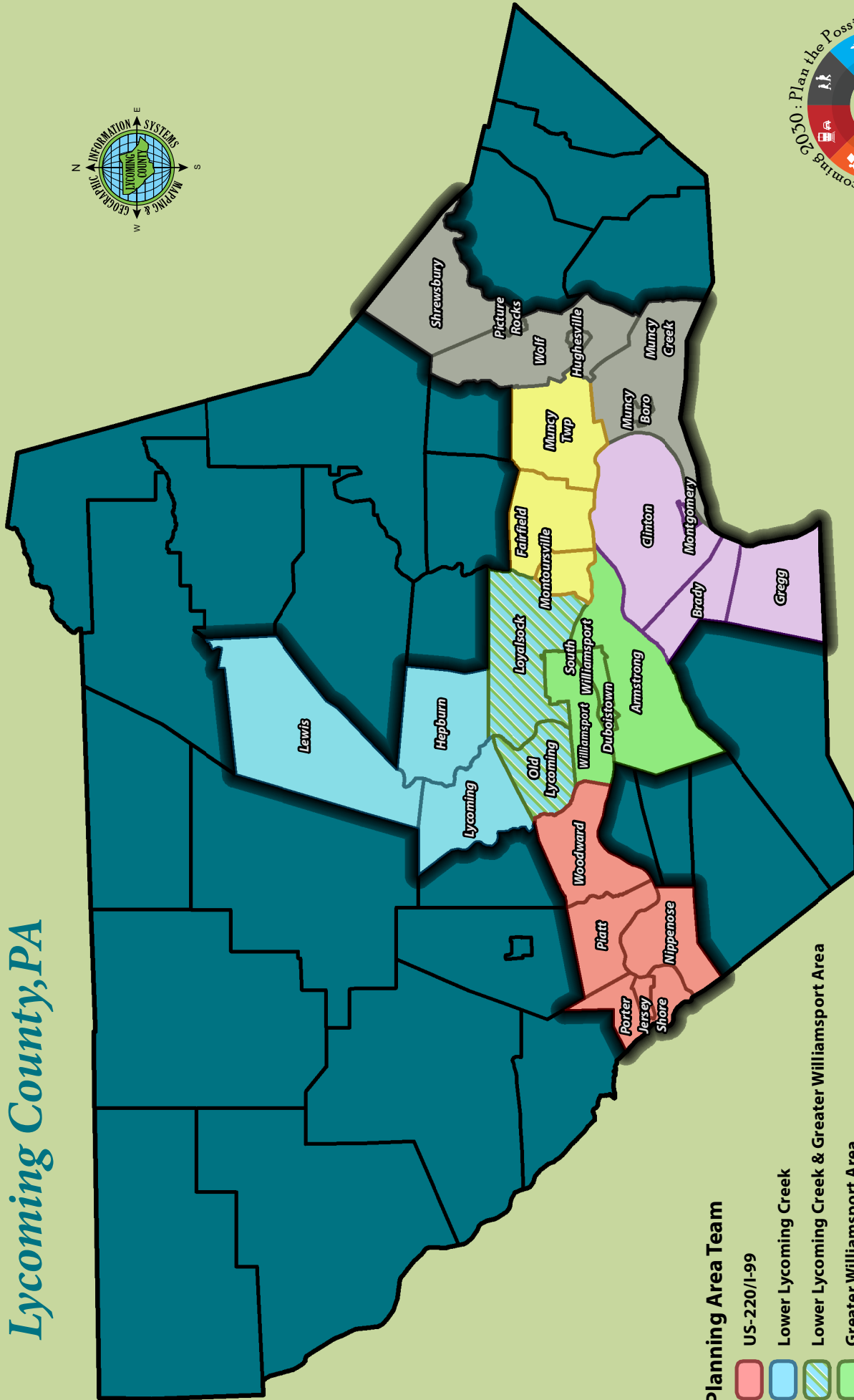
- Business/Industry**
- Downtown**
- Neighborhood**
- Rural**
- Rural Center**
- Village**

1 inch = 15,000 feet



Growth Planning Areas

Lycoming County, PA



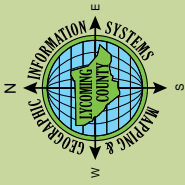
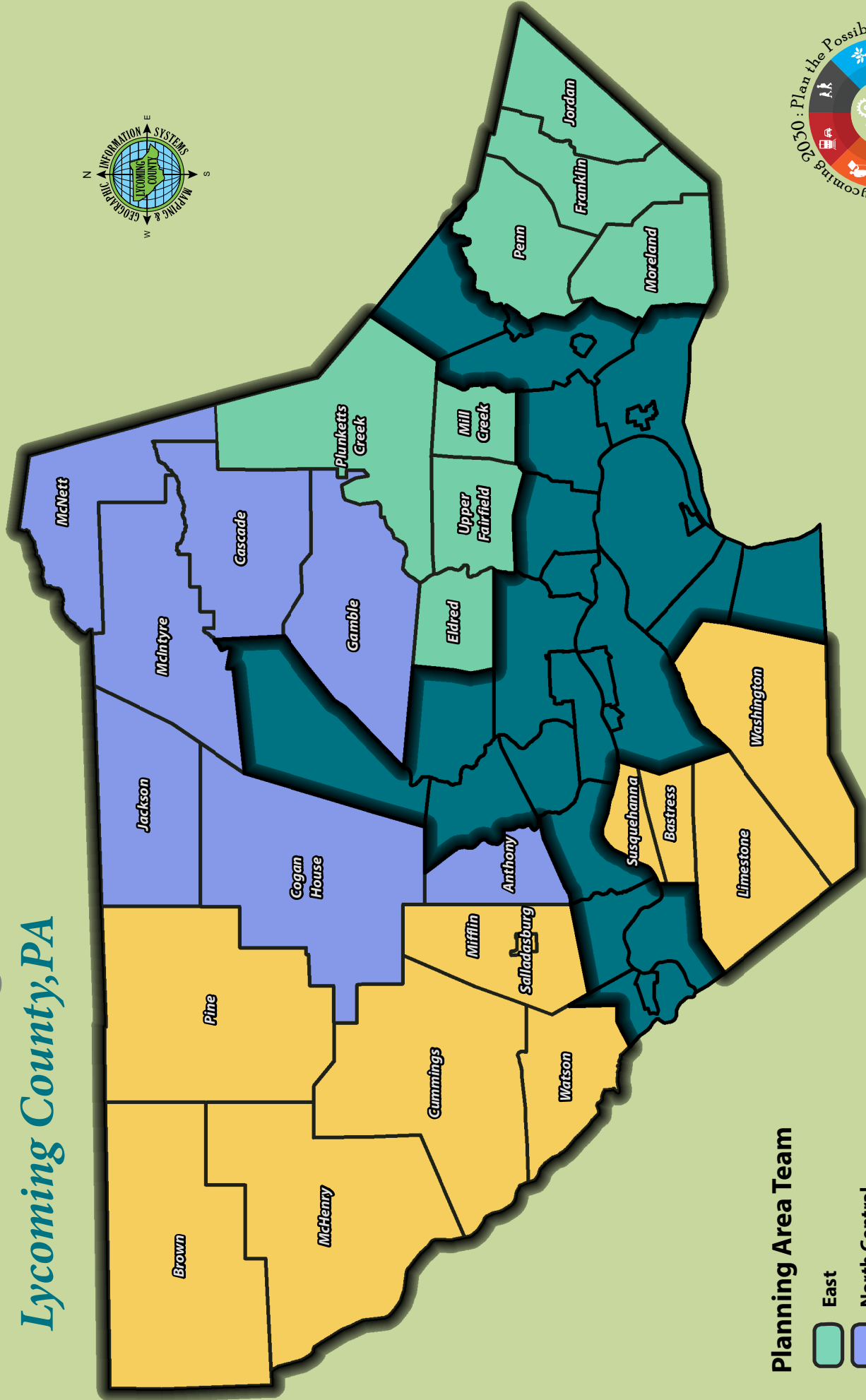
Planning Area Team

- US-220/I-99
- Lower Lycoming Creek
- Lower Lycoming Creek & Greater Williamsport Area
- Greater Williamsport Area
- Montoursville/Muncy
- US-15 South
- Muncy Creek



Rural Planning Areas

Lycoming County, PA



Planning Area Team

- East
- North Central
- West



Public School Districts

Lycoming County & Gregg Twp., Union County

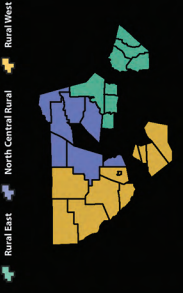
- Canton Area School District
- East Lycoming School District
- Jersey Shore Area School District
- Loyalsock Township School District
- Montgomery Area School District
- Montoursville Area School District
- Muncy School District
- South Williamsport Area School District
- Southern Triega School District
- Warrior Run School District
- Wellsboro Area School District
- Williamsport Area School District

Planning Advisory Team Area*

* Lower Lycoming, Township participants in both Lower Lycoming & Greater Williamsport Planning Areas



Rural Planning Advisory Team Areas



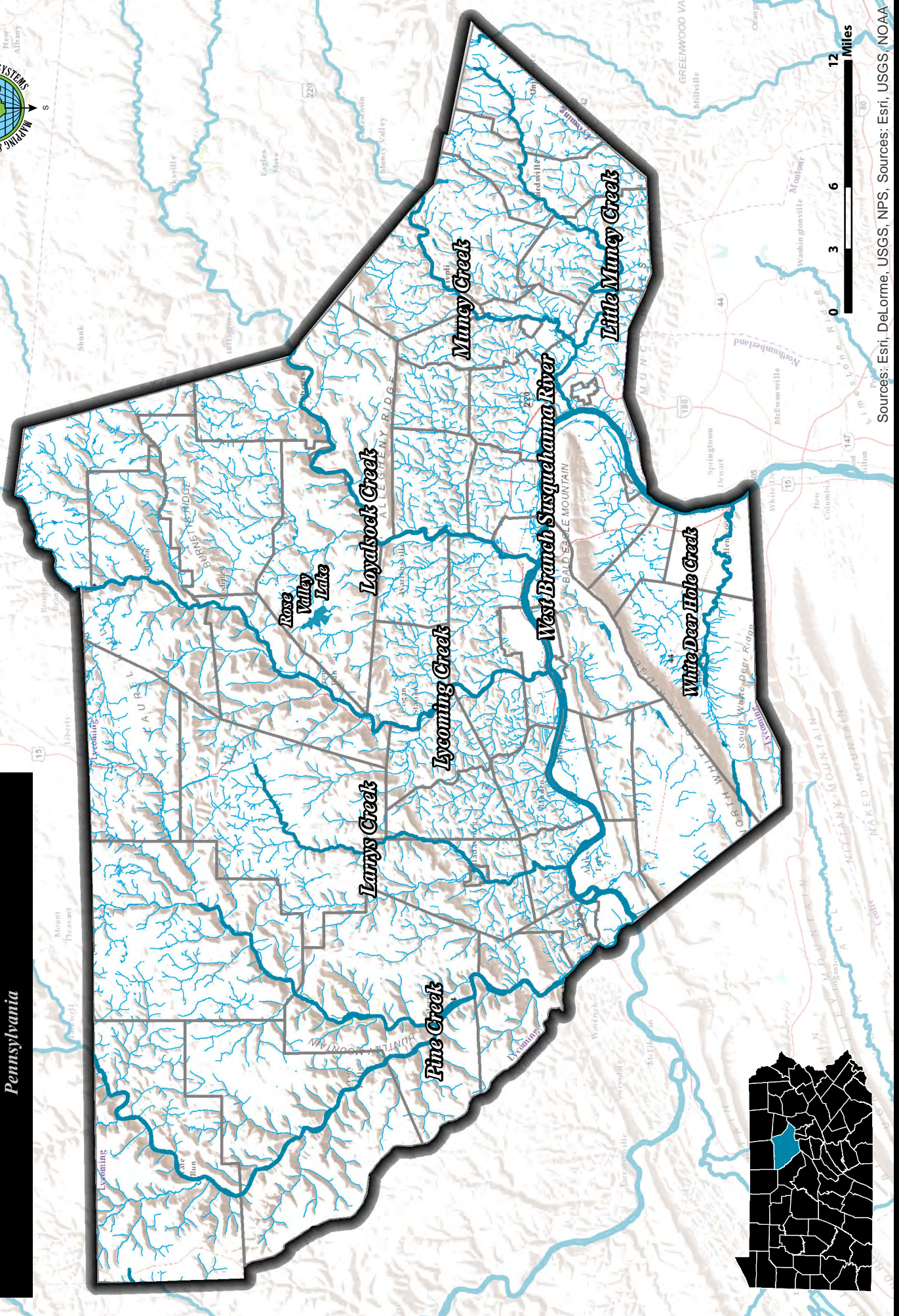
Growth Planning Advisory Team Areas

- US-220/599
- Lower Lycoming Creek
- Lower Lycoming Creek & GVA
- Greater Williamsport Area (GVA)
- Montoursville/Muncy
- US-15 South
- Muncy Creek

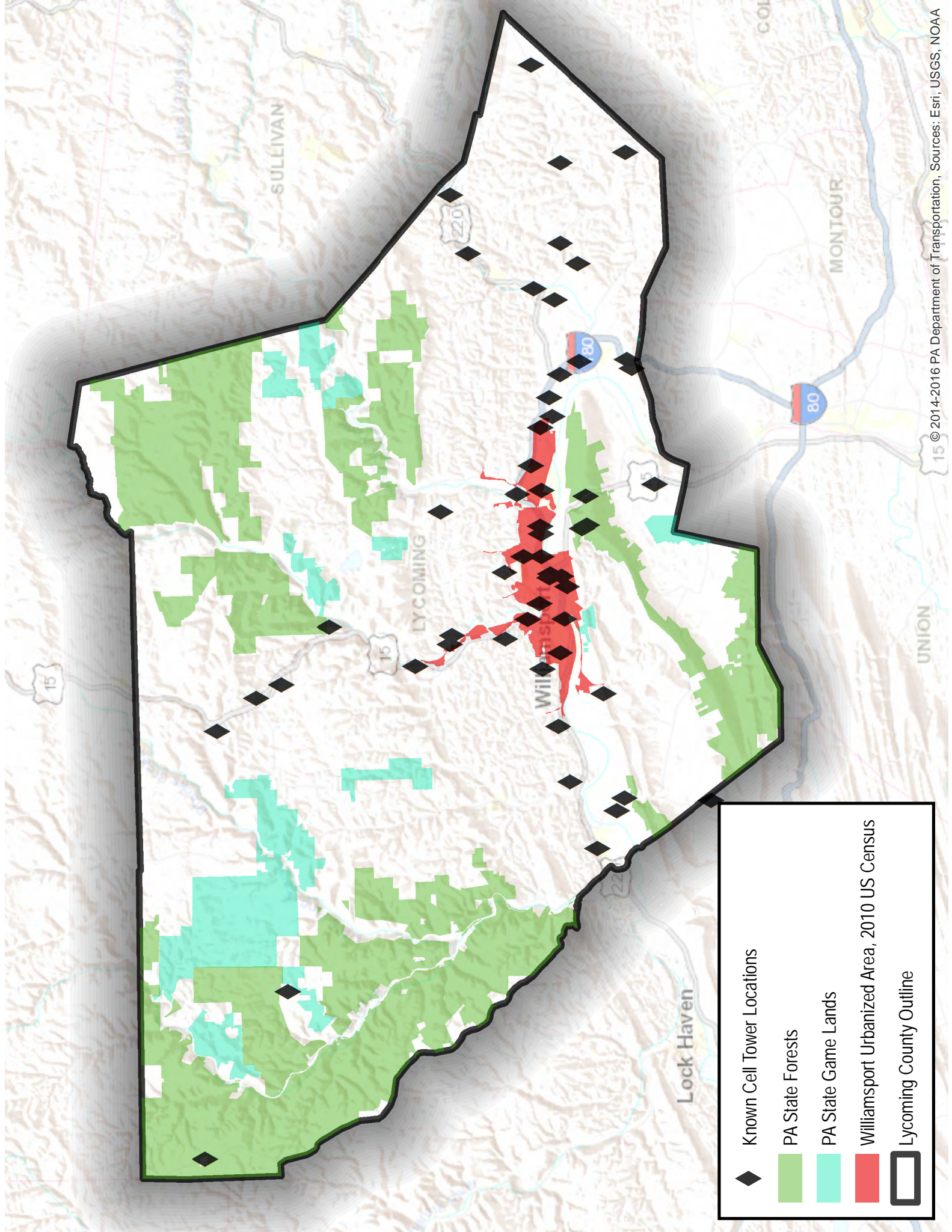


Major Waterways

*Lycoming County & Gregg Twp., Union County
Pennsylvania*



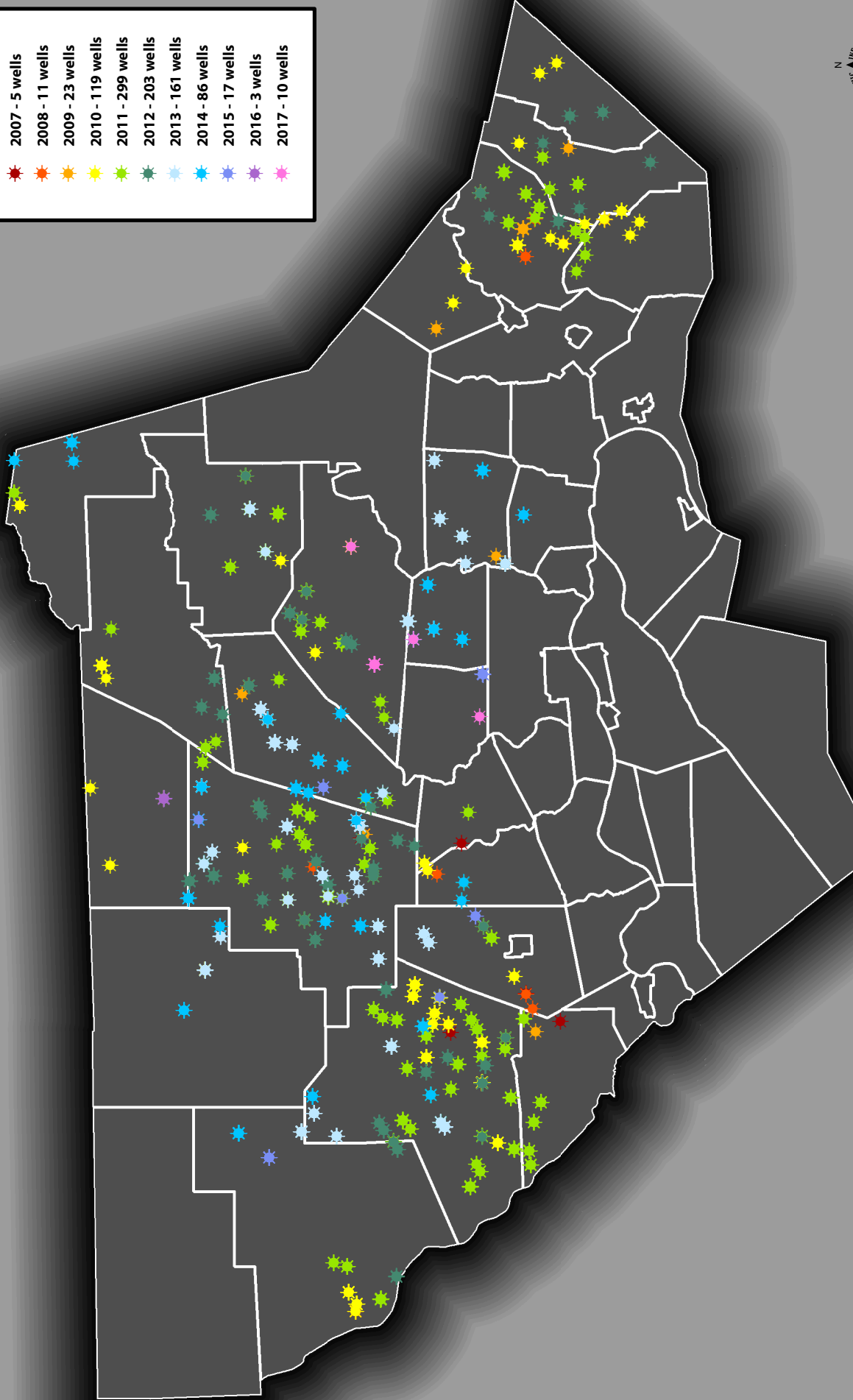
Sources: Esri, Delorme, USGS, NPS, Sources: Esri, USGS, NOAA



◆	Known Cell Tower Locations
■ (Dark Green)	PA State Forests
■ (Light Green)	PA State Game Lands
■ (Red)	Williamsport Urbanized Area, 2010 US Census
▭ (Black Outline)	Lycoming County Outline

Marcellus Gas Extraction

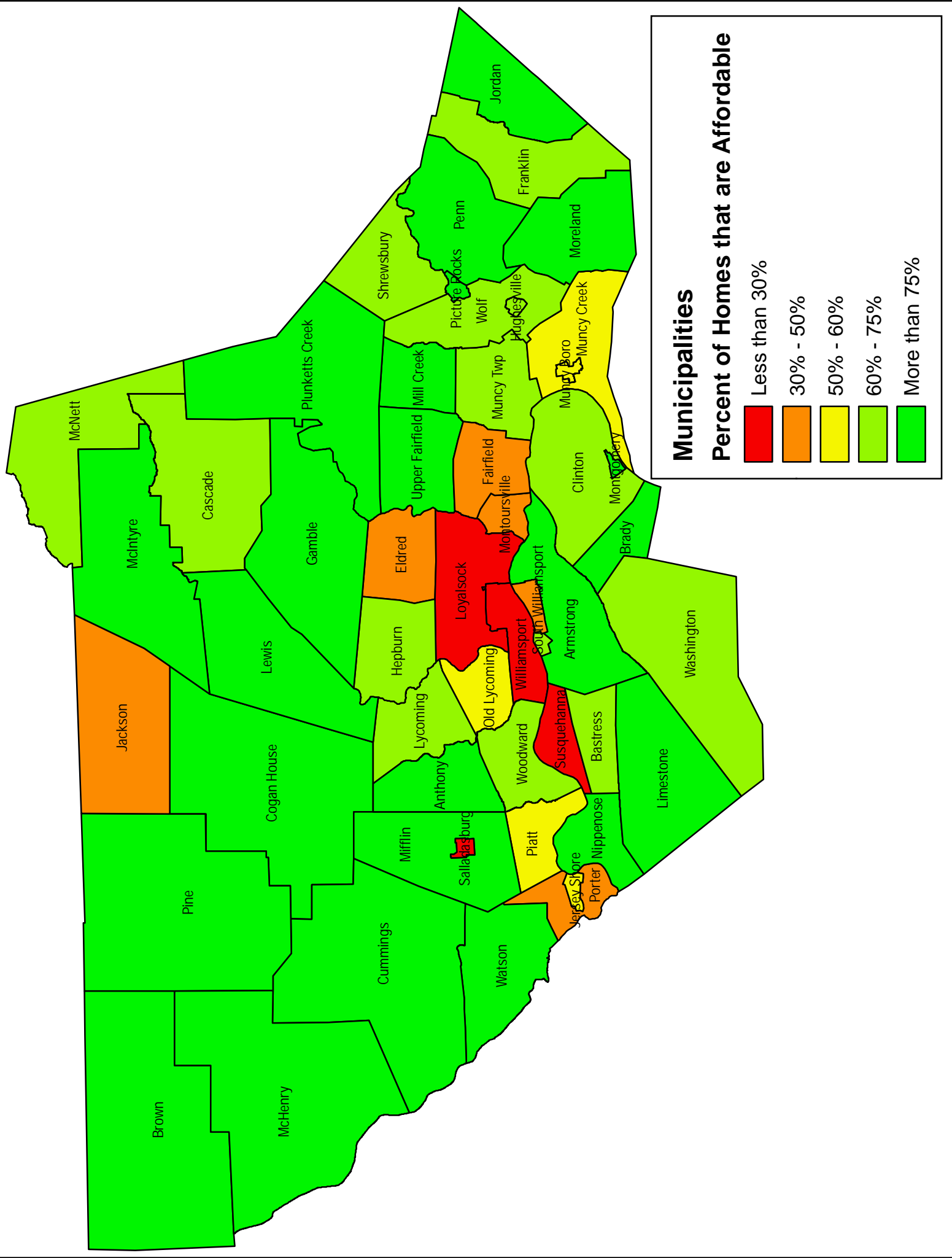
Lycoming County, Pennsylvania



1 inch = 32,000 feet



Date: 7/27/2017



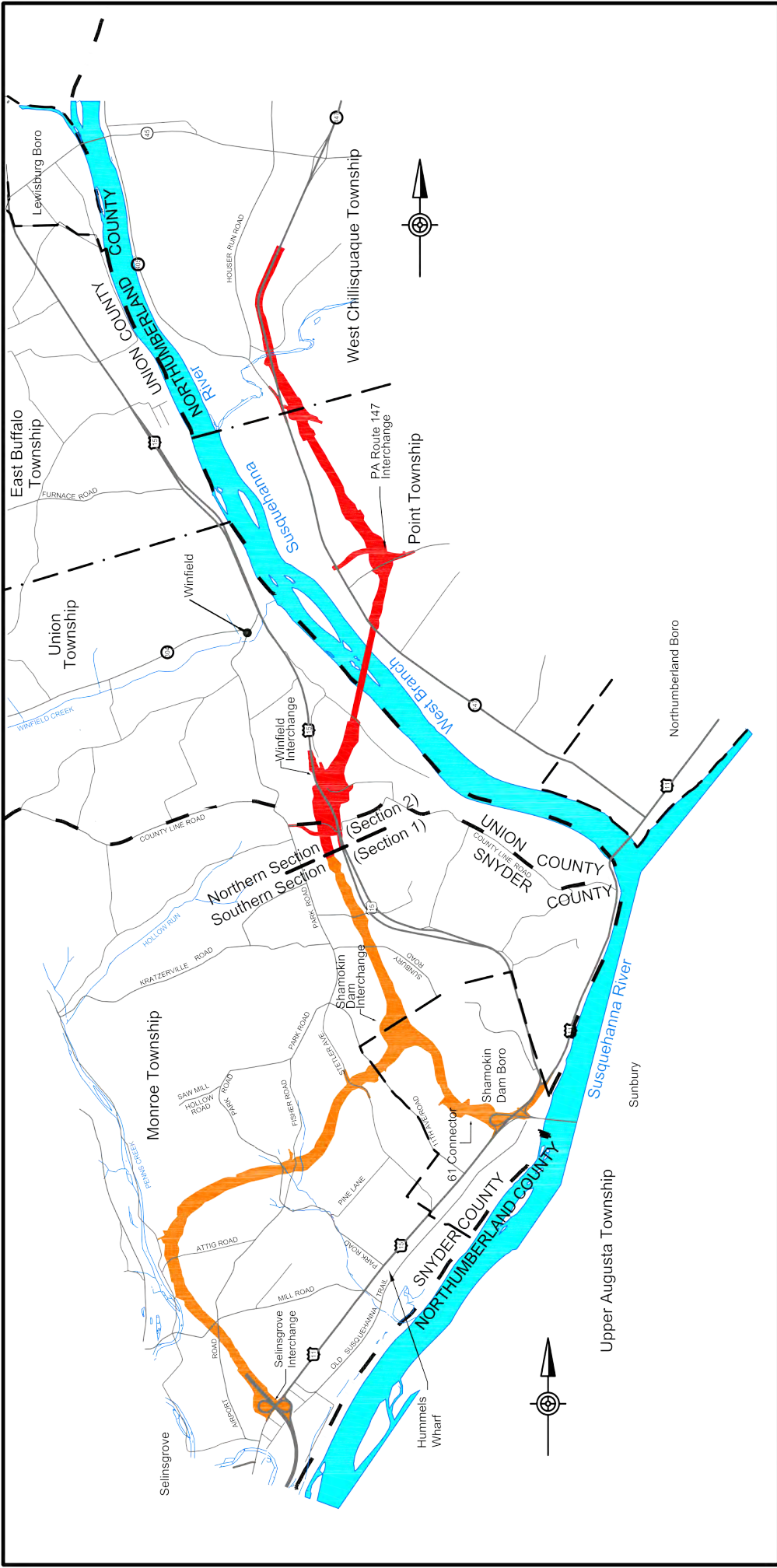


	Public Boat Launch (PA Fish & Boat Commission, 2018)		Explore PA Water Trails (DCNR, 2017)		Bureau of Forestry State Forest (DCNR, 2017)
	Hiking Trails of Pennsylvania (DCNR, 2018)		Parks (Lycoming County, 2016)		State Gameland (Pennsylvania Game Commission, 2017)
	Biking Trails of Pennsylvania (DCNR, 2018)		Bureau of Forestry Wild & Natural Areas (DCNR, 2017)		
	Exceptional Value and High Quality Streams (DEP, 2017)				

1 inch = 35,000 feet

0 17,500 35,000 70,000 Feet

Sources: Esri, USGS, NOAA



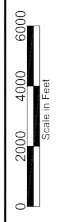
Legend

- Southern Section (Section 1)
- Northern Section (Section 2)
- Borough Boundaries

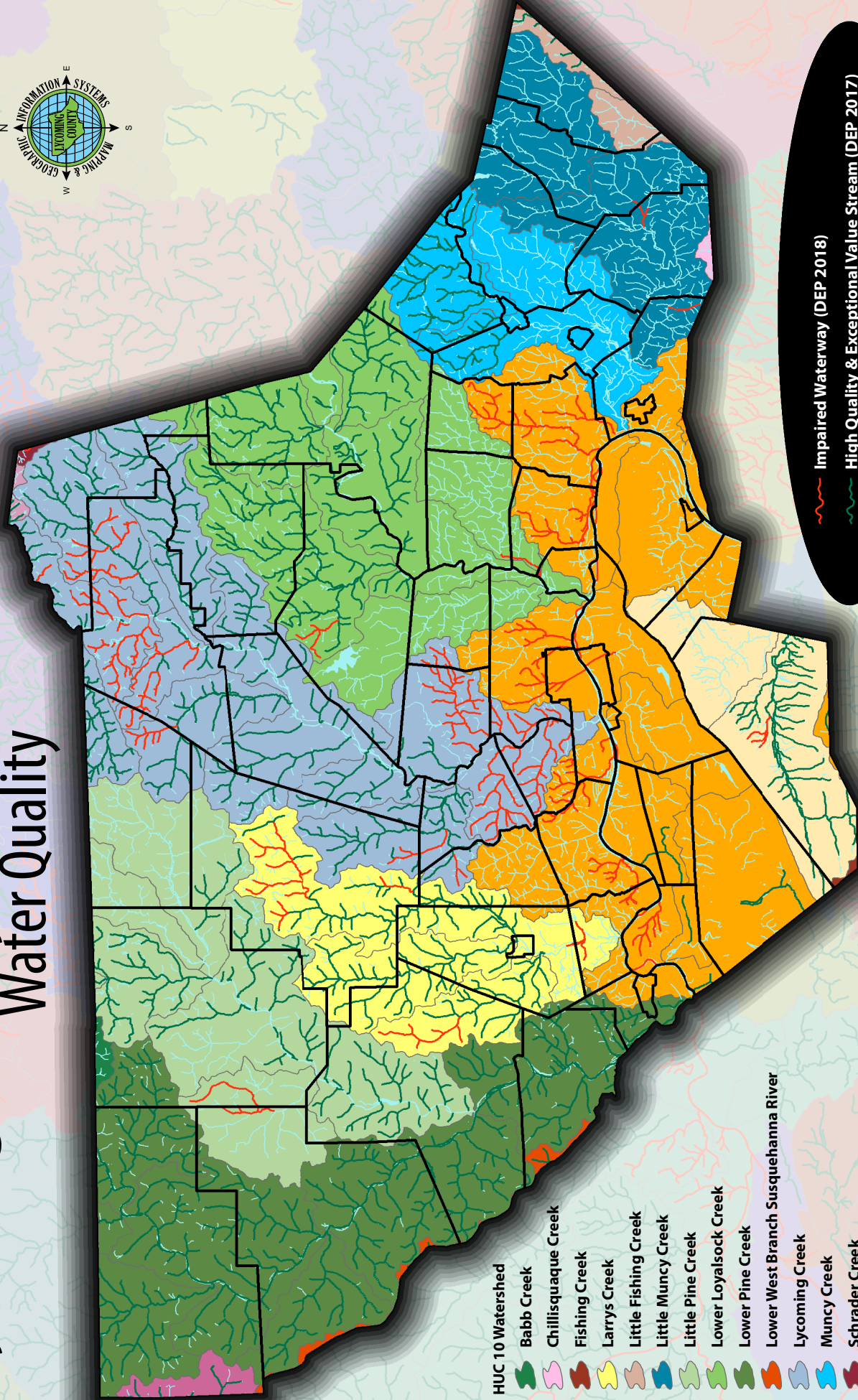
NOTE:
 The proposed alignment shown on this map represents the design as of the May, 2006 approval of the re-evaluation of the Final Environmental Impact Statement.

**Central Susquehanna Valley
 Transportation Project**


















Project Overview


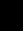



Lycoming County, PA Water Quality



HUC 10 Watershed

-  Babb Creek
-  Chillisquaque Creek
-  Fishing Creek
-  Larrys Creek
-  Little Fishing Creek
-  Little Muncy Creek
-  Little Pine Creek
-  Lower Loyalsock Creek
-  Lower Pine Creek
-  Lower West Branch Susquehanna River
-  Lycoming Creek
-  Muncy Creek
-  Schrader Creek
-  Towanda Creek
-  West Branch Susquehanna River
-  White Deer Hole Creek
-  Young Womans Creek

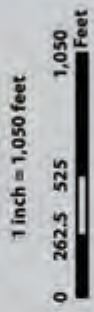
-  Impaired Waterway (DEP 2018)
-  High Quality & Exceptional Value Stream (DEP 2017)
-  Lycoming County Streams

1 inch = 31,250 feet
0 5 10 20 Miles



Project Area & Natural Resources

Sylvan Dell Conservation Project
Armstrong Twp., Lycoming Co., PA



- Project Area (approximately 229 Ac.)
- Nature's Network Impaired Species Core Habitat
- Countywide Soils
- DEP Field/GIS Enhanced Wetlands Habitat Classification
- PEM
- PFO
- POW
- PIS
- 2 Foot LIDAR Elevation Contour