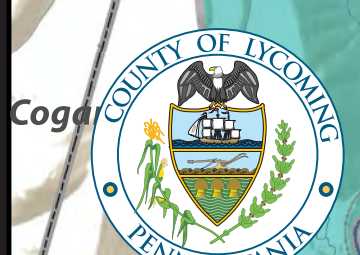


APPENDIX E

MAPS

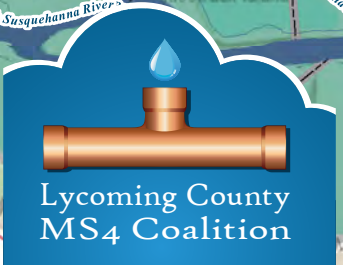
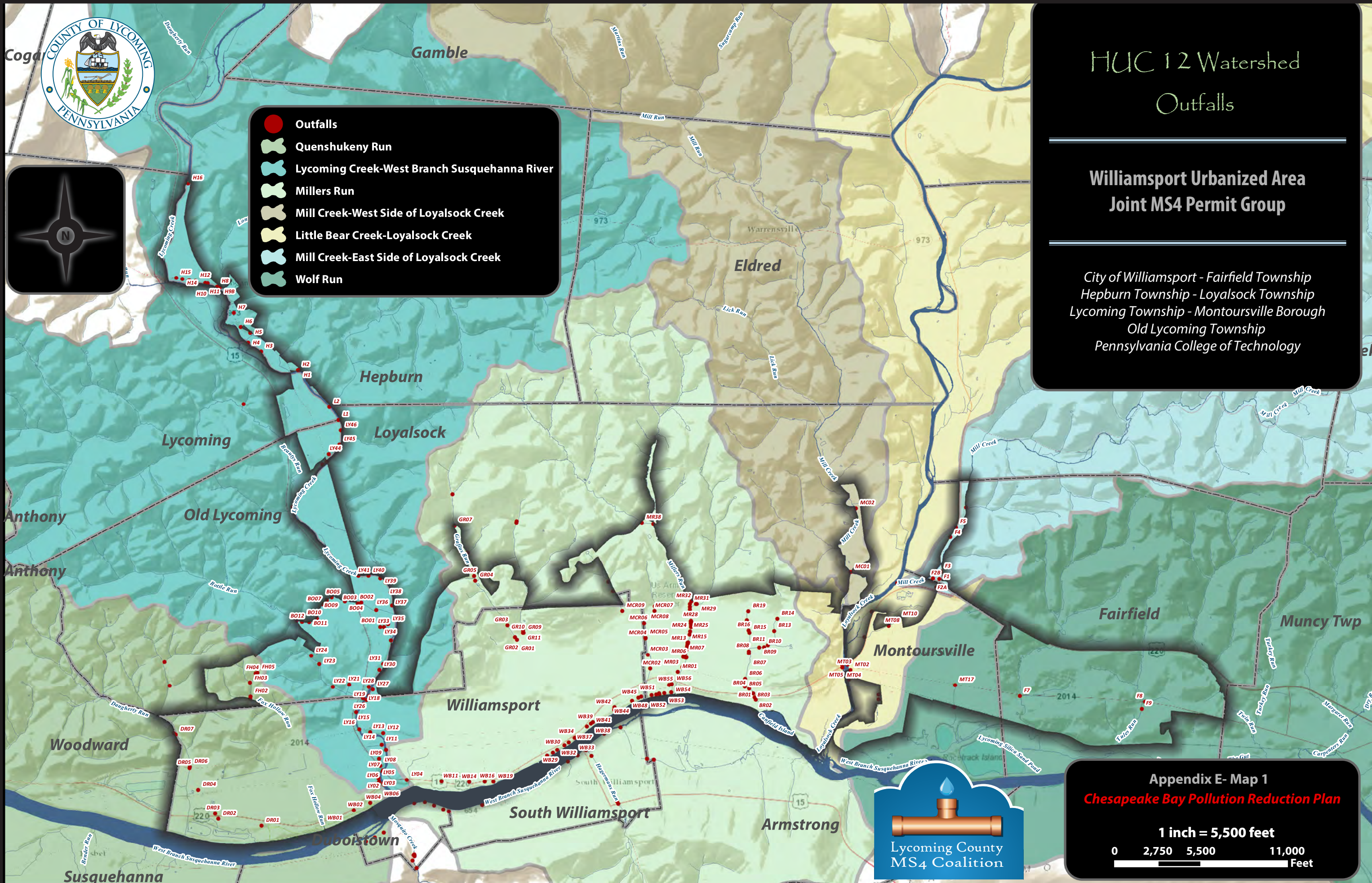


- Outfalls
- Quenshukeny Run
- Lycoming Creek-West Branch Susquehanna River
- Millers Run
- Mill Creek-West Side of Loyalsock Creek
- Little Bear Creek-Loyalsock Creek
- Mill Creek-East Side of Loyalsock Creek
- Wolf Run

HUC 12 Watershed Outfalls

Williamsport Urbanized Area Joint MS4 Permit Group

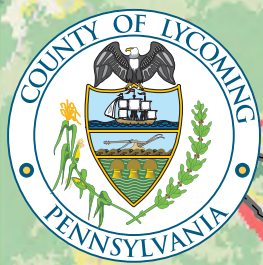
City of Williamsport - Fairfield Township
 Hepburn Township - Loyalsock Township
 Lycoming Township - Montoursville Borough
 Old Lycoming Township
 Pennsylvania College of Technology



Appendix E- Map 1
Chesapeake Bay Pollution Reduction Plan

1 inch = 5,500 feet

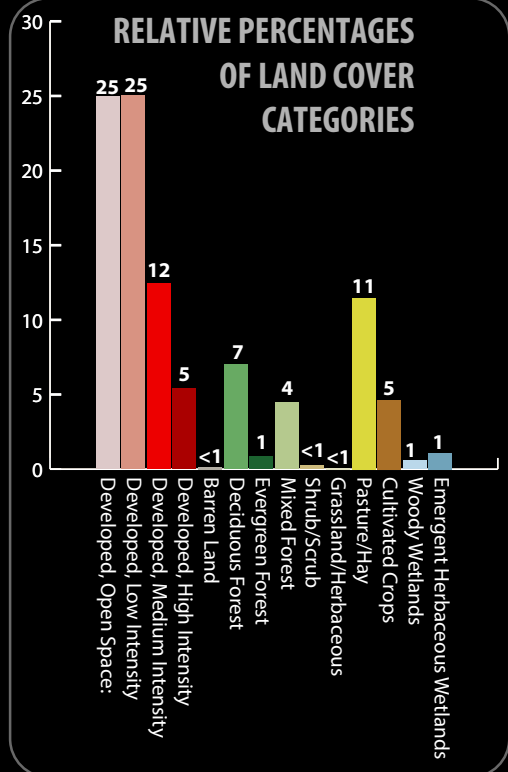
0 2,750 5,500 11,000 Feet



- Open Water
- Developed, Open Space (<20% impervious)
- Developed, Low Intensity (20-49% impervious)
- Developed, Medium Intensity (50-79% impervious)
- Developed, High Intensity (80-100% impervious)
- Barren Land (Rock/ Sand/ Clay)
- Deciduous Land
- Evergreen Forest
- Mixed Forest
- Shrub/Scrub
- Grassland/Herbaceous
- Pasture/Hay
- Cultivate Crops
- Woody Wetlands
- Emergent Herbaceous Wetlands



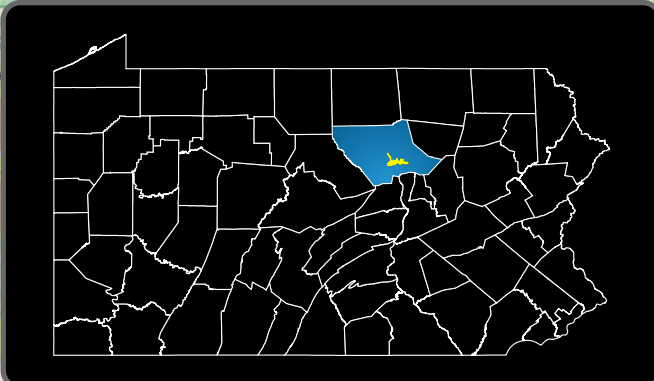
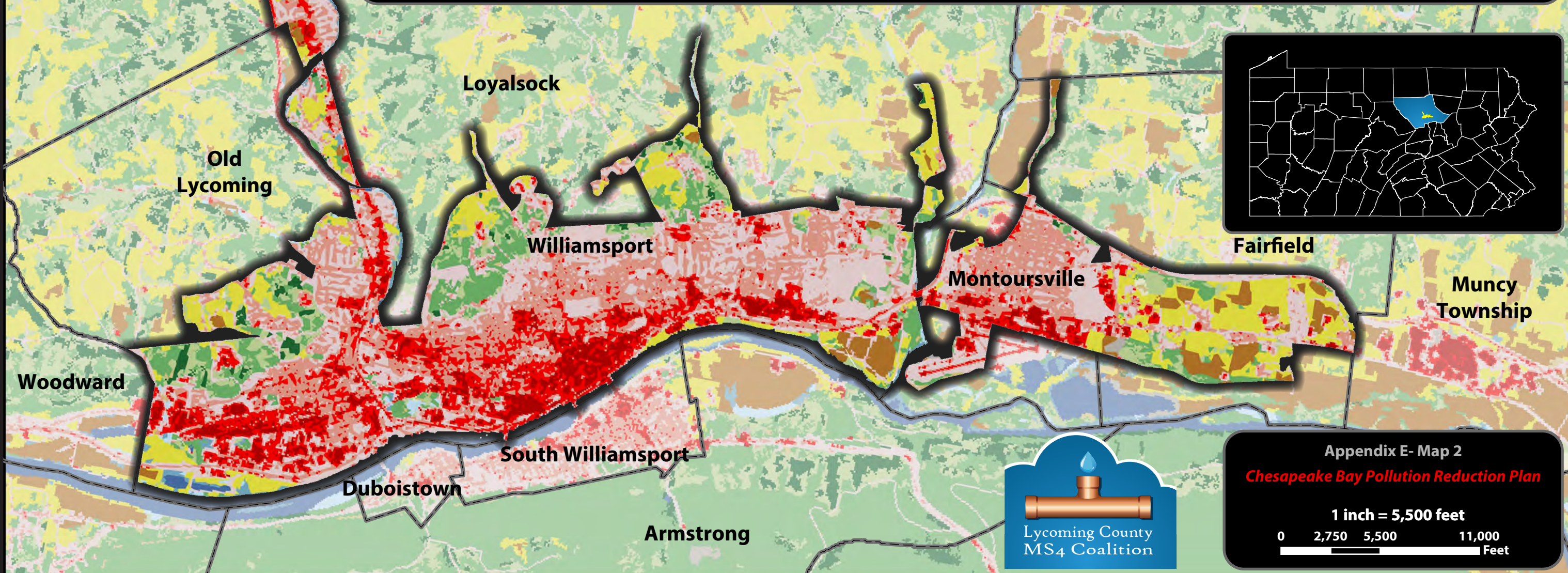
The National Land Cover Database (NLCD) data displayed in this map is a Multi-Resolution Land Characteristics Consortium (MRLC) product.



2011 USGS National Land Cover Database

Williamsport Urbanized Area Joint MS4 Permit Group

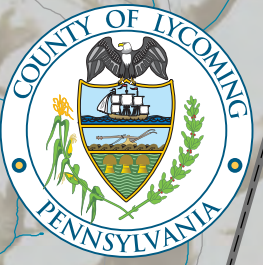
City of Williamsport - Fairfield Township
 Hepburn Township - Loyalsock Township
 Lycoming Township - Montoursville Borough
 Old Lycoming Township
 Pennsylvania College of Technology



Appendix E- Map 2
Chesapeake Bay Pollution Reduction Plan

1 inch = 5,500 feet

0 2,750 5,500 11,000 Feet



Locations for Best Management Practices

Williamsport Urbanized Area Joint MS4 Permit Group

City of Williamsport - Fairfield Township
Hepburn Township - Loyalsock Township
Lycoming Township - Montoursville Borough
Old Lycoming Township
Pennsylvania College of Technology

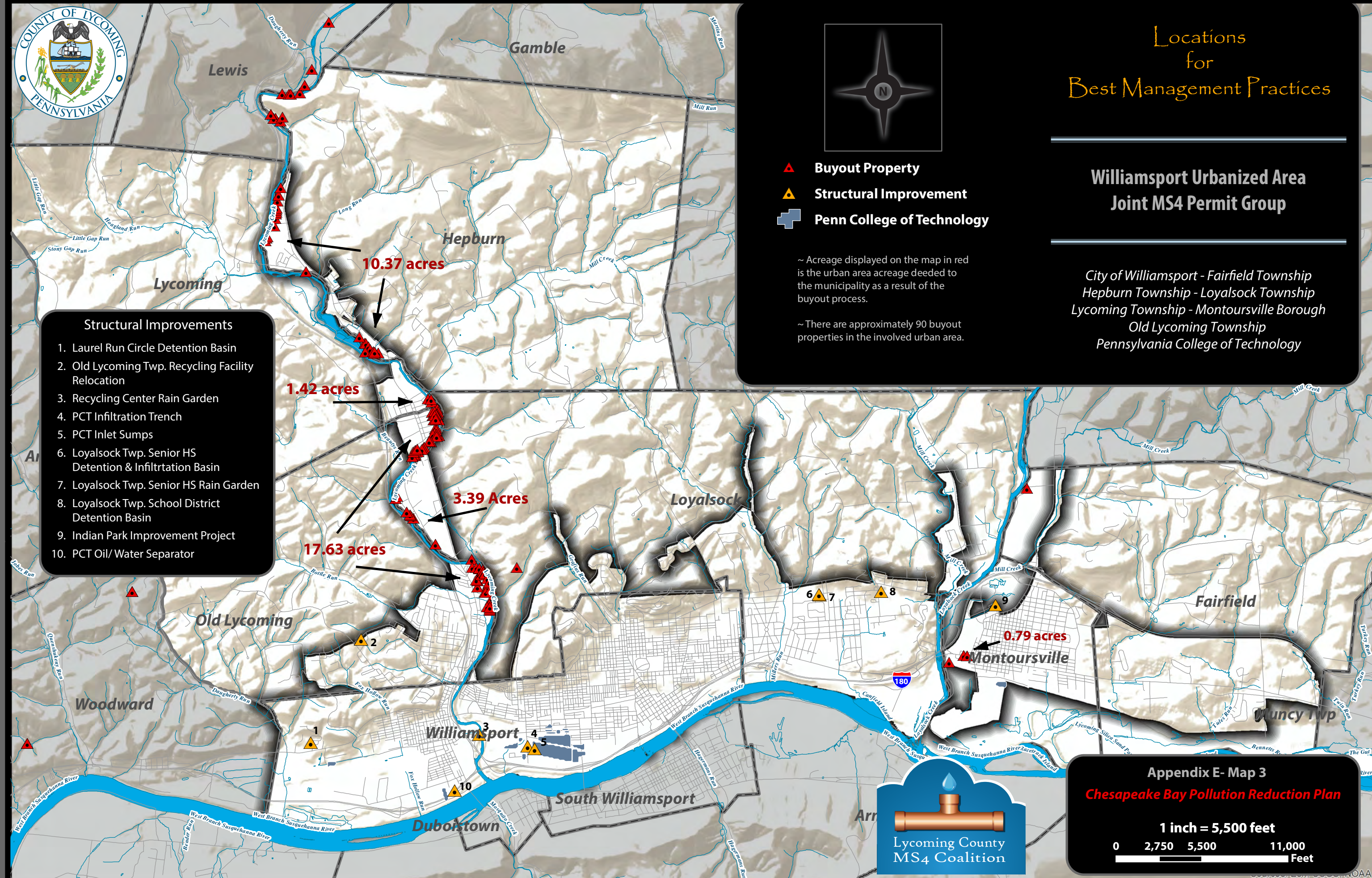


- Buyout Property
- Structural Improvement
- Penn College of Technology

~ Acreage displayed on the map in red is the urban area acreage deeded to the municipality as a result of the buyout process.

~ There are approximately 90 buyout properties in the involved urban area.

- ### Structural Improvements
1. Laurel Run Circle Detention Basin
 2. Old Lycoming Twp. Recycling Facility Relocation
 3. Recycling Center Rain Garden
 4. PCT Infiltration Trench
 5. PCT Inlet Sumps
 6. Loyalsock Twp. Senior HS Detention & Infiltration Basin
 7. Loyalsock Twp. Senior HS Rain Garden
 8. Loyalsock Twp. School District Detention Basin
 9. Indian Park Improvement Project
 10. PCT Oil/Water Separator



Appendix E- Map 3
Chesapeake Bay Pollution Reduction Plan

1 inch = 5,500 feet

0 2,750 5,500 11,000 Feet