

LYCOMING COUNTY  
PLANNING COMMISSION  
**ANNUAL REPORT 2004**



LYCOMING COUNTY PLANNING COMMISSION  
AND  
LYCOMING COUNTY DEPARTMENT OF  
ECONOMIC DEVELOPMENT AND PLANNING SERVICES

## 2004 LCPC/EDPS ANNUAL REPORT

### *MESSAGE FROM THE CHAIRMAN*

Serving on the Lycoming County Planning Commission has been a learning experience as well as interesting and rewarding. When I was asked to serve by County Commissioner, Gene Smith, 14 years ago, the thought never occurred to me that I might eventually be Chairman. I consider it an honor to be elected to this position by my fellow Commission members.

I can remember back before being appointed to the Planning Commission, and if someone had suggested that I would someday serve as a member, I would have said, “no way”! Like many citizens, I was suspect and wary of the Lycoming County Planning Commission and its motives, being influenced perhaps by the occasional negative story of a disgruntled individual and not really knowing the whole story or the work of the Planning Commission.

I was surprised, after becoming a member of the Commission, how often Commission members address the need for Planning Commission Staff to be courteous and helpful in executing their jobs with the public. We often discuss the need for our procedures and paperwork to be user-friendly. I soon became aware of how capable and talented our staff is and realized how blessed this County is to have such dedicated employees.

It never ceases to amaze me the volume and variety of issues your County Planning Commission is required to deal with. Sometimes it is difficult for staff to keep up with the workload, but they always meet the challenge. I often think how fortunate this County is to have a Planning Commission capable of addressing the many issues that must be dealt with at this level of government. The issues the Commission must address are not always easy but the sincere and factual approach by the Commission to resolving these issues is very gratifying.

We look forward to a busy and interesting year ahead with such issues as the Multi-Modal Freight Transfer study, our Comprehensive Plan work, the exciting projects proposed for the area around the Market Street Bridge project, and the Catamount Wind Turbine Farm, to mention only a few. Reading through the Annual Report will make you aware of the many other issues we will be involved with.

I look forward, as your Chairman, to continue working with the special people who make a difference in this great County.

Toner Hollick

**2004 LCPC/EDPS ANNUAL REPORT**

**MESSAGE FROM THE EXECUTIVE DIRECTOR**

Jerry S. Walls, AICP

2004 LCPC/EDPS ANNUAL REPORT



**LYCOMING COUNTY COMMISSIONERS**

Rebecca A. Burke, Chair  
Richard T. Nassberg, Vice-Chairman  
Ernest P. Larson, Secretary

**LYCOMING COUNTY PLANNING COMMISSION**

W.E. Toner Hollick, Chairman  
Charles D. Springman, Vice-Chairman  
Ann S. Pepperman, Esq., Secretary  
George A. Durrwachter, DMD, Treasurer  
Richard C. Haas, Assistant Treasurer  
Robert E. Waltz  
Robert E. Bauder, P.E.  
Roger D. Jarrett  
Joseph H. Neyhart

Charles F. Greevy, III, Solicitor

2004 LCPC/EDPS ANNUAL REPORT

**LYCOMING COUNTY ECONOMIC DEVELOPMENT  
AND PLANNING SERVICES STAFF**

Jerry S. Walls, AICP, Executive Director  
Kurt Hausammann, Jr., AICP, Deputy Director  
Mark R. Murawski, Transportation Planner  
Clifford A. Kanz, AICP, Development Services Supervisor  
Mary Ellen Rodgers, Community Development/Hazard Reduction Planner  
William R. Kelly, Economic Development Specialist  
Fred Pfeiffer, Zoning Administrator  
Kevin L. McJunkin, AICP, Environmental Planner  
Joshua Billings, Subdivision & Land Development Administrator  
Lynn F. Cunningham, Planning Technician/Analyst  
Richard Murphy, Land Records Cartographer  
Allen Kaplan, PG, GIS/Data Systems Planner  
Judson Bower, GIS/Data Systems Analyst  
Ed Feigles, GIS Graphics/ Fieldwork Coordinator  
Mark Bletz, GIS Technician  
Nathaniel Bordy, Land Records Database Coordinator  
Deborah Bennett, Project Administrator  
Jane Magyar, Clerk IV  
Beverly H. Bennett, Clerk II-A

2004 LCPC/EDPS ANNUAL REPORT

*Table of Contents*

**Overview of the Lycoming County Planning Commission.....7**

**Mission Statements ..... 8**

**County Organizational Chart.....9**

**Planning Commission Staffing Chart.....10**

**LCPC 2003 Year in Review ..... 11**

**EDPS Accomplishments:**

**Economic & Strategic Planning..... 14**

**Environmental Planning.....17**

**Transportation Planning ..... 19**

**County Subdivision & Land Development Ordinance Administration .....25**

**County Zoning Partnership.....28**

**Community Development Assistance ..... 30**

**Hazard Mitigation..... 32**

**Geographic Information Systems Update ..... 34**

**Administration & Interagency Coordination..... 36**

**Acronyms ..... 38**

**Subdivision/Zoning Ordinance & Floodplain Management Jurisdiction Map..... 40**

## 2004 LCPC/EDPS ANNUAL REPORT

### *OVERVIEW OF THE LYCOMING COUNTY PLANNING COMMISSION*

The Lycoming County Planning Commission has been concerned with the economic, social, and environmental future of Lycoming County since its formation by the County Commissioners in 1966. The Commission reviews, proposes, and recommends courses of action that will maintain and enhance the high quality of life in our County.

Nine citizen members are appointed to the Planning Commission, serving four-year terms without pay. In appointing members to this Commission, the Commissioners try to ensure that the members come from different regions of the County and have a diverse mix of occupations and perspectives.

The Commission is supported by the County Economic Development & Planning Services staff of ten professional planners and eight technical and clerical support personnel (see attached chart). The staff has a wide range of specialized experience and training including:

- \* Economic Development
- \* Strategic Economic Planning
- \* Comprehensive Growth Management
- \* Demographic Analysis
- \* Transportation Engineering and Planning
- \* Infrastructure Planning
- \* Zoning and Subdivision/Land Development Ordinance Preparation and Administration
- \* Floodplain and Stormwater Management
- \* Hazard Mitigation Planning
- \* Community Planning
- \* Grantsmanship
- \* Information Technology
- \* Global Positioning Systems Technology
- \* Geographic Information Systems
- \* Parks and Recreation Facilities Planning
- \* Environmental Concerns, such as Solid Waste Management, Wastewater Treatment, and Water Supply Systems
- \* Conservation by Design
- \* Geology

The staff prepares the necessary background research and documentation for planning projects and programs being developed by the County Planning Commission and the County Commissioners, assists individual citizens and developers with various land use concerns, and provides planning assistance to municipalities and Chamber of Commerce upon request.

The County Planning Commission is funded from the County General Fund, plus State and Federal Government grants, development processing fees, and municipal service contracts.

## 2004 LCPC/EDPS ANNUAL REPORT

### ***MISSION STATEMENTS***

#### *Lycoming County*

To plan and implement changes which will improve the local economy and make Lycoming County a better place to live, learn, and conduct business.

#### *Lycoming County Planning Commission*

To facilitate and promote the coordinated and harmonious management and/or development and protection of resources within Lycoming County for present and future needs. Intervene through proactive strategic planning initiatives on problems or opportunities and timely response to needs and issues identified by the County, municipalities, local agencies or community organizations and private citizens.

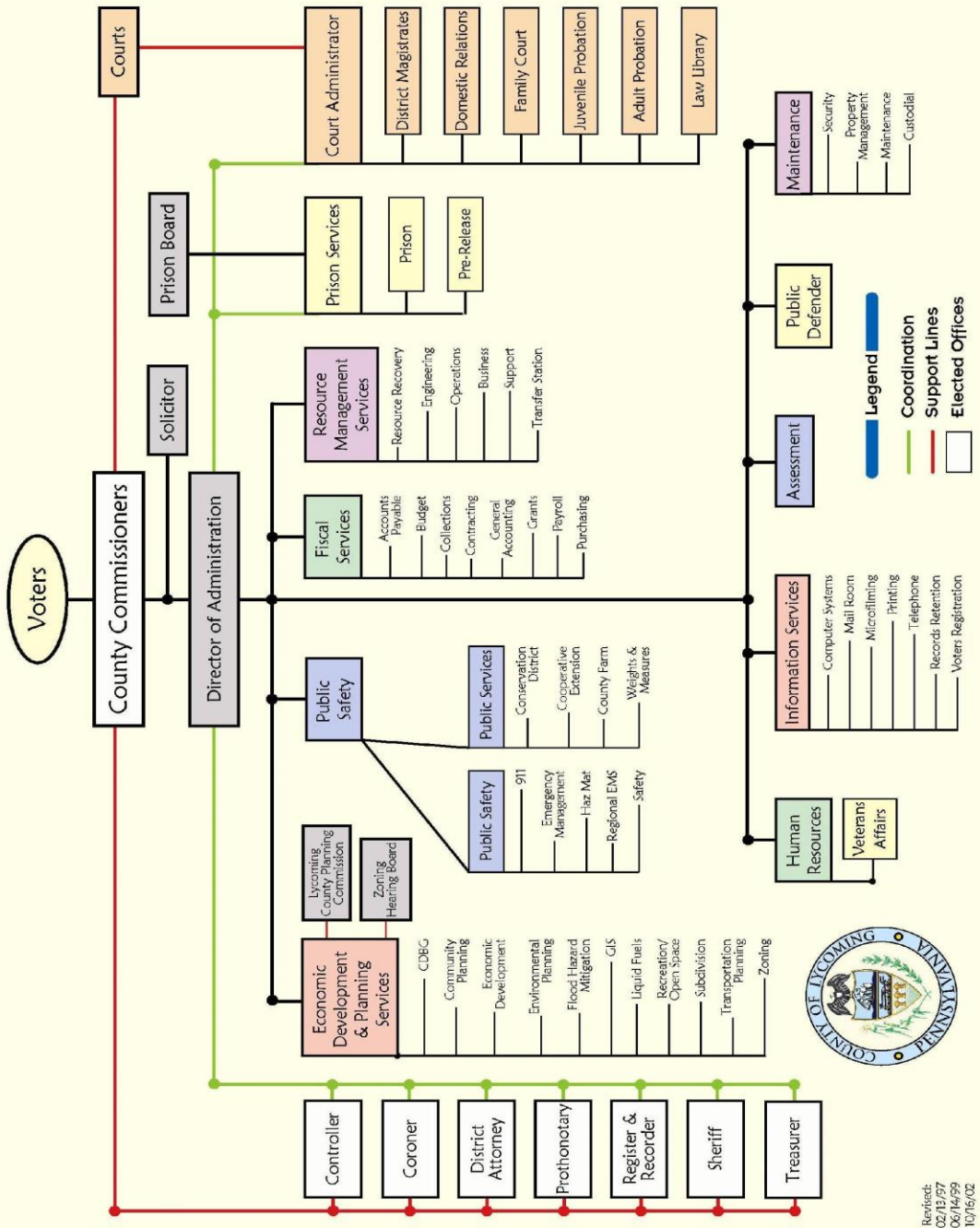
#### *Department of Economic Development & Planning Services*

To promote the orderly **development** of land while preserving/conserving natural resources, **stimulation** of sustainable economic growth, **investment** in technologies, and the **creation** of the infrastructure needed to enhance the quality of life of County residents. To initiate or support projects that foster sustainable communities and promote public welfare and safety throughout the County consistent with the goals set forth in the County's Comprehensive Plan. To advance and support joint or inter-municipal cooperation in planning and project initiatives.



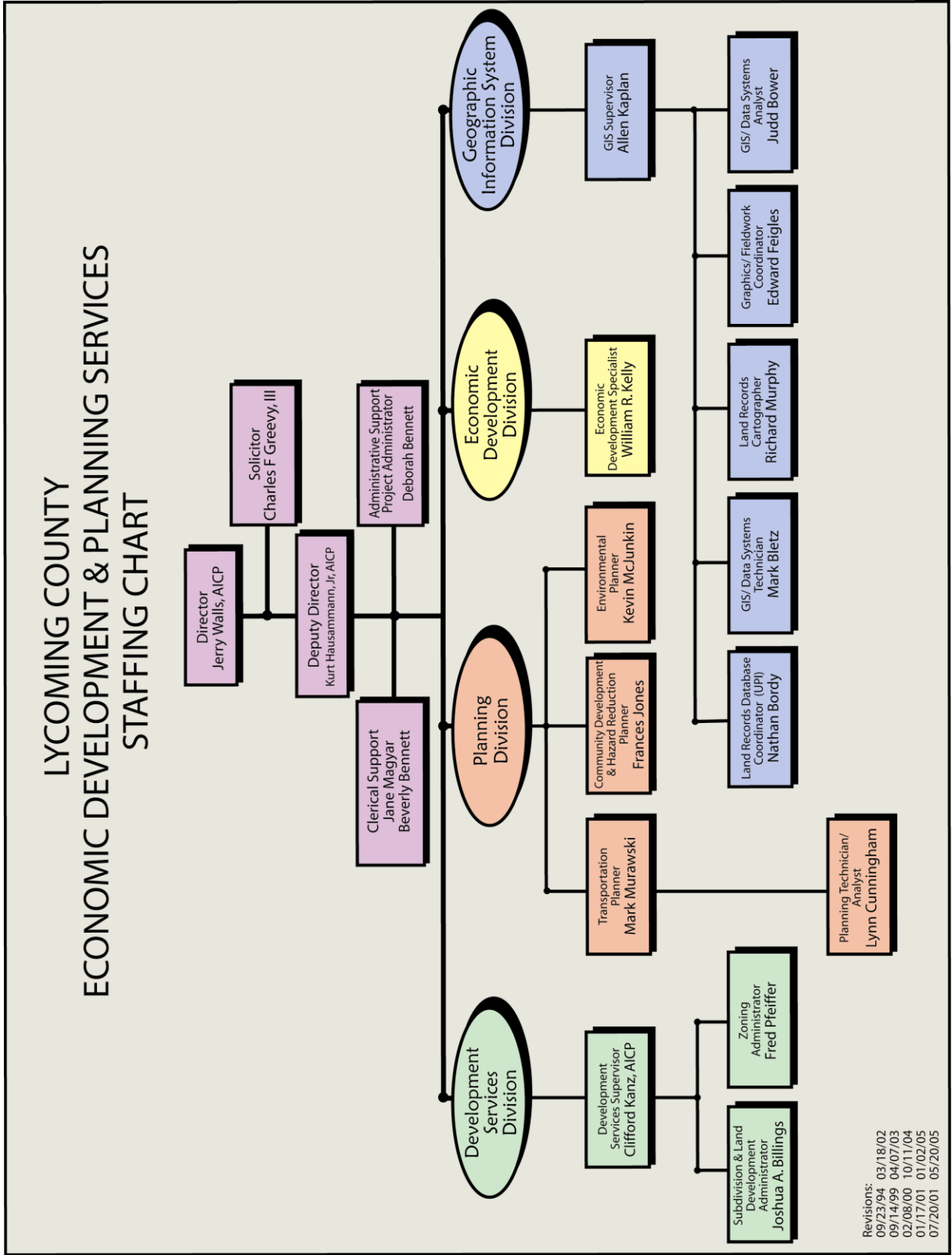
**2004 LCPC/EDPS ANNUAL REPORT**

LYCOMING COUNTY ORGANIZATIONAL CHART



Revised:  
02/13/97  
06/14/99  
10/16/02

LYCOMING COUNTY  
ECONOMIC DEVELOPMENT & PLANNING SERVICES  
STAFFING CHART



Revisions: 09/23/94 03/18/02  
09/14/99 04/07/03  
02/08/00 10/11/04  
01/17/01 01/02/05  
07/20/01 05/20/05

## 2004 LCPC/EDPS ANNUAL REPORT

### *2004 YEAR IN REVIEW*

The Lycoming County Planning Commission meets the third Thursday of every month at 7:30 p.m. There are also additional advertised committee meetings on an as-needed basis. The public is welcome and encouraged to attend all meetings of the Planning Commission. Highlights of the 2004 monthly meetings include the following:

#### January

- Elected Officers
- Created position of Assistant Treasurer
- Approved Floodplain Ordinance Amendments with revisions
- Approved recommendation for Salladasburg Borough to join County Zoning Partnership

#### February

- Committee assignments made
- Approved a multi-lot subdivision plan for property located in Muncy Township
- Approved the FFY 2004-2005 WATS Unified Work Program

#### March

- Reviewed Engineering Proposals for services to LCPC
- Discussion was held concerning the future land use categories in the draft comprehensive plan
- Discussion was held concerning the new statewide building code

#### April

- Approved multi-lot subdivision plan for property located in Penn Township
- Executive Director authorized to execute engineering contract with Cummings and Smith
- Heard a status update on the Recreation, Open Space, and Greenways Plan

#### May

- Approved multi-lot subdivision plan for property located in Limestone Township
- Approved land development plan for East Lycoming School district in Hughesville Borough
- Discussion held on final draft comprehensive plans
- Reviewed RFP for Multi- Modal Freight Transfer Study
- Reviewed RFP for M/B/C Sewage Facilities Plan

#### June

## 2004 LCPC/EDPS ANNUAL REPORT

- Re-Approved a multi-lot subdivision plan for property located in Cogan House Township
- Approved a multi-lot subdivision plan for property located in Pine Township
- Approved two multi-lot subdivision plans for property located in Jordan
- Approved multi-lot subdivision plan for property located in Muncy Township
- Approved multi-lot subdivision plan for property located in Piatt Township
- Approved 2004-2005 Work Program

### July

- Approved a multi-lot subdivision plan for property located in Cogan House Township
- Approved a multi-lot subdivision plan for property located in Piatt Township
- Approved Hughesville Fire Department land development plan
- Approved contract for Multi-Modal Freight Transfer Study
- Approved 2005-2008 Transportation Improvement Program

### August

- Approved Flook land development plan in Mifflin Township
- Approved Alexander Nissan land development plan in Muncy Township
- Approved increase in indirect cost rate
- Reviewed draft Hazard Mitigation plan

### September

- Approved Hazard Mitigation Plan
- Approved contract with Larson Design Group for M/B/C Sewage Facilities Plan
- Heard a presentation on the PA Wilds

### October

- Approved contract with HRG for Lycoming Stormwater Plan
- Approved recommendation to Commissioners of zoning amendment for Lewis Township
- Comprehensive Plan public input sessions were reviewed

### November

- Approved multi-lot subdivision for property located in Watson Township
- Approved contract extension with Gannett Fleming for Comprehensive Plan
- Healthy Streams Presentation by Joan Sattler of DEP

### December

## 2004 LCPC/EDPS ANNUAL REPORT

- Approved new fee schedule for the LCPC
- Set the meeting schedule for 2005
- Appointed nominating committee
- Approved letter of review and comment concerning the Eastern Lycoming YMCA
- Accepted Porter Township under jurisdiction of County Subdivision and Land Development Ordinance
- Heard a report of the public input session for the Catamount Wind Turbine Farm

## 2004 LCPC/EDPS ANNUAL REPORT

### **SUMMARY OF EDPS ACCOMPLISHMENTS**

The following is a summary of the major accomplishments of Lycoming County Economic Development and Planning Services (EDPS) during 2004:

#### **STRATEGIC PLANNING**

- Completed and secured adoption of Muncy Creek and the Montoursville/Muncy Multi-Municipal Comprehensive Plans.
- LCPC Executive Director continued to serve on the Susquehanna Greenway Partnership (SGP) Planning Team and was elected chairman of the Partnership. Extensive public outreach involved hundreds of residents in greenway design.
- Created new and fostered existing Municipal/County/State/Federal partnerships surrounding new projects and initiatives; CSO Planning Grant, Comprehensive Plan Project, GIS Deployment, Market Street Bridge Study, Lower Lycoming Flood Hazard Mitigation Plan, Flood Hazard Mitigation Efforts, and County Recreation Plan.

#### **ECONOMIC DEVELOPMENT ACTIVITIES**

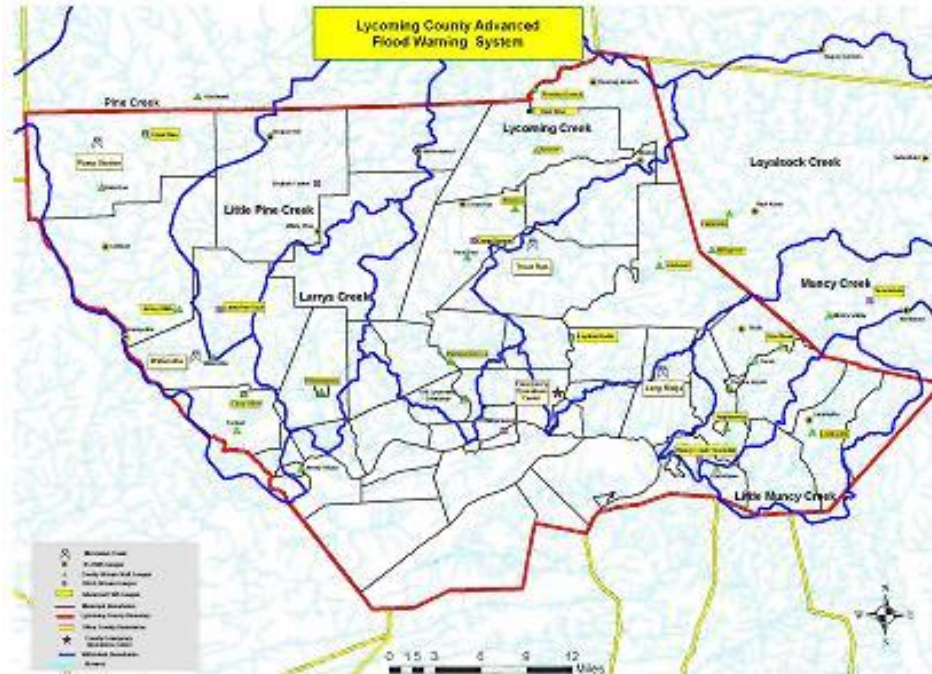
- Combined Sewer Overflow Project Construction Grant - The US EPA awarded a \$4 million grant to Lycoming County with \$3.5 million being directed to assist the WSA plant expansion. The grant was successfully completed and closed out in 2004. Major accomplishments achieved include—completion of the Williamsport Sewer Authority's West Wastewater Treatment Plant, WSA's East End Sewer Improvement Project, WSA's Central Plant Raw Sewage Flow Meter Replacement Project, South Williamsport's Charles Street Pump Station Upgrade and Williamsport City's Storm Water Separation Project for Second and Center Streets.
- Combined Sewer Overflow Study – The Monitoring & Evaluation phase of this 3-year study was completed and the Comprehensive Analysis phase was substantially finished in 2004. Inflow and infiltration studies were completed in Duboistown, South Williamsport, Old Lycoming and Loyalsock. The post construction analysis of the improved flow conditions of the Loyalsock Demonstration project was completed. A "pipe network tool was designed by Malcolm Pirnie and used to evaluate flow analysis for the Central Treatment Plant's influent flows under various river and precipitation. We have completed the Arch Street By Pass Study and the Arch Street Pump Station Study for the West Plant. In 2004 we completed the update to the City's Storm Water Master Plan and the EDPS/GIS task to map the infrastructure of the sanitary sewer system(s) for all municipalities in the CSO study area.

## 2004 LCPC/EDPS ANNUAL REPORT

- Central Business District revitalization project—feasibility study was completed, the Trade and Transit Center Expansion RFP was released—one bid was received and is currently being negotiated. RFPs for the Church Street Transportation Center and the Conference Center were released—six bids received. All major components of the plan authorized in the Pennsylvania Capital Budget legislation. Governor Rendell pledged \$6,000,000 to the package of projects. Federal legislators were strategically approached to gain their support for funding for the elements of the CBD Revitalization.
- Construction was completed on the Halls Station area sewer system which provides public sewer service for the area surrounding the Lycoming Mall including the Muncy Industrial Park Phase II, Keystone Opportunity Zones to the west of the mall and the village of Pennsdale.
- Brownfields for Housing Program—a State DCED initiative: In 2004 the County completed the FY 2002 program which included the construction by Habitat for Humanity of two single family homes at the site of the former Buckeye Pretzel plant on Eldred Street in Williamsport and the design of the infrastructure needed to sustain housing on the former “Penny Commons” site in Newberry. Regarding the FY 2003 Brownfields program Habitat for Humanity completed two homes and STEP Inc completed over 16 home modification projects to benefit elderly, disabled and low-income families throughout the County. For the FY 2004 Brownfields program, Habitat was supported in the construction of another single family home, STEP was supported in the rehabilitation of at least 12-15 more dwellings and LNDC was supported in the rehabilitation of a severely deteriorating home in Picture Rocks. The County also made application for the FY 2005 Brownfields program with an ambitious grant request for a housing impact project.
- Muncy Industrial Park Phase II—Working cooperatively with the Industrial Properties Corporation, the County-prepared a pre-application package for this KOZ site to secure funding to support design and construction of an access road. The County then assisted the IPC to prepare the application package for \$300,000.
- Flood Warning System—First year of operation was completed on the United States Army Corps of Engineers designed and installed system. State-of-the-art, all weather gauges capable of measuring stream depth on all five major creeks have been installed—also installed were nine rain gages which compliment the State’s existing IFLOWs network of gages within the County. Sophisticated software enables the EOC to archive and retrieve the flood or high water data for follow-on analysis. Preparations were begun to display the gage readings on line—live—on the County Web Site.
- Elm Street – This new State level initiative enabled the County to secure a grant for \$250,000 to assist the City of Williamsport to connect or link both visually and relationally the Historic District and the Central Business District. The grant helped to fund the installation of 64 period style streetlights and entrance portals to the District.



## 2004 LCPC/EDPS ANNUAL REPORT



### Flood Warning System Gauge Locations

- Lower Lycoming Creek Flood Damage Reduction Project—Feasibility Study. The County formally launched this Study on behalf of the five participating Townships of the Lower Lycoming Creek on 11 August 2004. This \$3.5 million, multi-year study is intended to identify cost effective and feasible methods to gain the maximum amount of flood mitigation to an area that has been repeatedly flooded for the past 150-175 years. PA DEP is a significant funding and Technical Partner and was formally announced during the visit by PA DEP Secretary Kathleen McGinty.
- The County successfully wrote grants to the US EPA on behalf of sewer projects for the Hughesville Wolf Authority and Muncy Borough Municipal Authority. The County then assisted the Borough of Muncy in the intricate procurement process involving the US EPA, US ACE and PA DEP.
- The County successfully wrote grants to the US EPA on behalf of water project for the Jersey Shore Area Joint Water Authority—a major rehabilitation of the water tank at their Larry’s Creek Filtration Plant. The County then assisted the Authority through the follow on procurement process involving the US EPA, US ACE and PA DEP.
- The county also supported the Lumber Heritage Region—Bill served as Vice President of the Board through 2004—the County also participated in the Interpretative Planning process conducted by Fermatta Inc. County also made application to LHR for a mini grant to support the Timber Trail historic walk along the river levee.

## 2004 LCPC/EDPS ANNUAL REPORT

### **ENVIRONMENTAL PLANNING**

- Lycoming County Recreation, Parks, and Open Space/Greenway Plan work began with input from a 5000 household random survey plus recreation focus groups.
- LCPC staff, with assistance from the Larson Design Group and a Recreation Advisory Committee, has nearly completed a **County Recreation, Parks, and Open Space/Greenway Plan** update:
  1. Completed and compiled a Survey of local needs and demands for recreation programs and park areas;
  2. Convened and interviewed a number of Focus Groups (e.g. Youth, boating, hiking activities) relating to specialized areas of recreation and natural resource management;
  3. Completed an Inventory of existing recreation programs and park facilities and their usage patterns, and;
  4. Developed recommendations for priority in addressing needs for recreation programs and park facilities, and;
  5. Completed a draft Greenways and Trails Concept Plan.

This project will also help address needs identified by local residents at the Our Towns 2010 Workshops, and has been recognized by the Greater Williamsport Area 2000 Alliance as a top priority, which will enhance existing recreation programs and facilities and will foster increased cooperation and resource sharing between our County's local governments. The project is an integral component of the County Comprehensive Plan Update.

Funding from DCNR (\$80,000) and DCED (\$30,000) has been secured. A 60 + member Recreation Advisory Committee has been formed to review recreation and open space inventory information and provide input into project goals and process. The Lycoming County Planning Commission, staff/consultants and Advisory Committee developed and distributed a Comprehensive Recreation Survey to 5,000 randomly selected Lycoming County households. Of these, 1,352 surveys were returned ( $1352/4933 = 27.4\%$ ), a very high percentage for this type of survey. The survey has provided statistically significant information about County recreational needs, and will be helpful in obtaining Grant funding for community recreation projects and programs. A summary of the Survey results is posted on the County Website. A draft of the plan is scheduled for completion by the end of April 2005.

A major focus of Plan implementation will be a Comprehensive Open Space and Greenway Initiative. Staff has compiled many data layers and will apply them through the GIS system to develop a comprehensive Open Space and Greenway network. Greenways are linear corridors of open space that will serve to protect natural, cultural, and scenic resources, provide

## 2004 LCPC/EDPS ANNUAL REPORT

recreational benefits, enhance natural beauty and quality of life in neighborhoods and communities, and stimulate economic development opportunities.

- The LCPC staff continued to participate on various committees including the:
  - Susquehanna River Conservation Plan Steering Committee
  - Pine Creek River Conservation Plan Steering Committee
  - Susquehanna Greenway Partnership Planning Team
  - PA DCNR Growing Greener Advisory Committee
  - PA DCNR Greenways Advisory Group
  - PA DCNR Recreation Advisory Committee
  - PA DEP Regional Roundtable
  - Endless Mountains Resource Conservation and Development (RC & D) Council
  - Pine Creek Rail Trail Advisory Committee (LCPC Members + Executive Director)
  - PA DEP Big Bend and Susquehannock/Gennessee Regional Watershed Association
  - Lycoming County Conservation District
  - DEP Northcentral Regional Citizens Round Table.
  - Lumber Heritage Regional Focus Group
  - The Environmental Planner, in conjunction with the GIS Department, provided professional and technical support to several Lycoming County Watershed Associations
  
- The County recently secured funding for a Phase II Lycoming Creek Stormwater Plan. The watershed study area is about 372 square miles, comprised of 16 municipalities in Lycoming, Tioga, and Sullivan County. An Advisory Committee comprised of municipal and agency officials and the Lycoming Creek Watershed Association has been convened and provided input for the Phase I Scope of Study for the Plan. This project will be coordinated with the Lower Lycoming Creek Hazard Mitigation Project, providing valuable stormwater modeling input and helping to meet local funding match requirements. We will also use stream assessment data being compiled by the Lycoming College Clean Water Institute for the Lycoming Creek Watershed Association. A Model Stormwater Ordinance for the 16 municipalities will also be developed through this Plan, including both stormwater runoff quantity and quality controls. Phase II will start in Spring of 2005, and will take about two years to complete.
  
- EDPS staff are working with the **Williamsport Area MS4** (municipal separate storm sewer system) municipalities to develop a coordinated and efficient program to meet this Federal stormwater quality mandate. First year program requirements, including a comprehensive inventory of stormwater drainage outfalls, have been met and an Annual Report prepared. A model illicit discharge and stormwater quality Ordinance has been developed and the six affected municipalities are in the process of adopting the Ordinance. Other MS4 requirements including Public Education and Outreach efforts are being undertaken in conjunction with the MS4 municipalities.
  
- LCPC representatives and staff are working with the Endless Mountains RC & D and other representatives from Lycoming, Tioga, and Potter Counties to develop a multi-County,

## 2004 LCPC/EDPS ANNUAL REPORT

watershed wide, **Pine Creek River Conservation Plan**. A round of Public Meetings and a Public Opinion Survey have been conducted as a first step. A preliminary Draft Plan has been developed, and is scheduled for completion in the Fall of 2005.

- LCPC staff spent considerable time **reviewing natural resource related developments, particularly the proposed Wind Tower Project.**

### **TRANSPORTATION PLANNING**

#### **Williamsport Area Transportation Study & Transportation Planning Activities**

Within Lycoming County, the transportation planning process is conducted through the Williamsport Area Transportation Study, (WATS). WATS was established in 1968 with the purpose to develop sound transportation policies, programs and projects which move people and goods in a safe, efficient manner, promote economic development, protect the environment and preserve the County's outstanding quality of life amenities. The Lycoming County Planning Commission (LCPC) provides staff support to WATS to carryout transportation planning activities identified in the WATS Unified Planning Work Program. All federally funded highway, bridge and transit projects must receive WATS approval prior to project initiation. The major transportation activities conducted during 2004 are described below:

#### **Rail Service**

The EDPS Director was re-appointed by the Lycoming County Commissioners to serve as a voting member to the SEDA-COG Joint Rail Authority. He has been reelected Vice-Chairman of the Rail Authority. Industries served by the Lycoming Valley Railroad continue to report improved usage and overall service quality in rail services since the Joint Rail Authority purchased the Williamsport Branch Lines between Jersey Shore and Muncy from Conrail in August 1996. Continuing issues in rail service to Lycoming County rail shippers with Norfolk Southern regarding track use rights to the Harrisburg-Buffalo Mainline and competitive access to the Canadian Pacific Interchange at Sunbury have been the focus of Joint Rail Authority concern. The EDPS Director has been asked by the Joint Rail Authority to chair its negotiating team for Norfolk Southern issues. EDPS staff has been working closely with SEDA-COG Joint Rail Authority and PENNDOT to explore funding options for replacement of the Lycoming Valley Railroad Bridge over Loyalsock Creek in conjunction with the airport access road and Montoursville Flood Protection projects. The hydraulic waterway opening contributes to the flooding problem along Loyalsock Creek, especially when flood debris is collected at the bridge. The project is estimated to cost approximately \$ 5 million. The federal, state and local funding package is being finalized. The SEDA-COG Joint Rail Authority has agreed to allow PENNDOT to design and construct the railroad bridge as part of the PENNDOT Airport

## 2004 LCPC/EDPS ANNUAL REPORT

Access Road Project using URS as the consultant. A scope of work has been developed. Design of the railroad bridge has begun and will take about 18 months. The project should be under construction in 2008.

In July 2004, the LCPC contracted with Linare Consulting, Pittsburgh to conduct an Intermodal Freight Distribution Center Feasibility Study in partnership with SEDA-COG. This study will evaluate the overall need for a truck, rail, and air freight transfer center in a 12 county regional study area based upon a thorough market assessment survey of manufacturing and distribution companies. If the transfer facility need is justified, the study will also evaluate potential sites and estimated costs for this type of facility, including public infrastructure needs to support the project. A business plan will be provided that identifies ownership, operation and financing requirements for the transfer facility. A 20-member steering committee has been formed and meets bi-monthly to review study progress and deliverables prepared by the consultant. The study will be completed by December 31, 2005.

### **Interstate 99 Initiatives**

In 2004, the LCPC completed the I-99 Land Use Planning Study in conjunction with the PENNDOT Interstate 99 (Susquehanna Beltway) project along the US 220 Corridor between Jersey Shore and Williamsport. This project was initiated by PENNDOT in response to the TEA-21 legislation authorizing designation of the Appalachian Thruway (US 220 / US 15 between Bedford, PA and Corning NY) as Interstate 99. Official interstate designation cannot occur until the corridor is fully upgraded to meet Interstate design standards. Unfortunately, in March, 2004 PENNDOT Secretary Allen Biehler announced that the project design phase had to be suspended due to funding constraints. It is not known at this time when the project design will be reactivated by PENNDOT. The LCPC continues to support the need for the project as part of the overall I-99 Corridor Upgrades in PA.

The I-99 Land Use Planning Study and Joint Comprehensive Planning process is extremely important to properly plan for anticipated growth impacts in the study area. The plan has been included in the I-99 Corridor Joint Municipal Comprehensive Plan. This plan has been endorsed by the I-99 Planning Advisory Committee and is currently being adopted by Porter, Piatt, Woodward Townships and Jersey Shore Borough.

Progress continues to be made on I-99 projects along the US 15 Corridor north of Williamsport. A major section between Blossburg and Mansfield was opened to traffic in October 2004 and construction will begin on the Tioga – Lawrenceville Section in early 2005. The final design of the Steam Valley Mountain section continues to proceed.

### **Williamsport CBD Revitalization Vision**

## 2004 LCPC/EDPS ANNUAL REPORT

Construction of the long-awaited Market Street Bridge Replacement Project began in May 2004. PENNDOT Secretary Biehler attended the groundbreaking ceremony in May, 2004 and praised local officials in using the bridge project to serve as a new community gateway and in developing a vision to revitalize the Williamsport Central Business District. The major component of the project is the incorporation of a Single Point Urban Interchange, which will provide full directional access between the new bridge and Interstate 180. The improvement will provide a dramatic new gateway to the City of Williamsport and South Williamsport Borough. Numerous context sensitive design elements funded by Congressional federal earmarks secured by the Lycoming County Commissioners have been incorporated into the bridge project, such as modern roundabouts along Via Bella, lighting, railing, bike/pedestrian facilities, and other features. Funding from the bridge project can be leveraged toward redevelopment projects.

The vision has been developed by the lead partners consisting of the County of Lycoming, City of Williamsport, Williamsport-Lycoming Chamber of Commerce, Our Towns 2010 and the Lycoming County Housing Finance, Inc. The study provides an overall vision for revitalizing the downtown area. This vision includes development of several projects over two phases. Phase 1 consists of a conference center with winter garden, Church Street Transportation Center containing a new parking deck, Trade and Transit Center Expansion with multi-plex cinema, Susquehanna Riverwalk and downtown streetscape improvements. The vision has been presented to approximately 100 stakeholder organizations, municipal officials, affected property owners and service clubs with positive feedback. EDPS arranged for development of a professional video that has aired on local cable TV. This vision is also available by visiting the county's website at [www.lyco.org](http://www.lyco.org).

The next step in the study process is to secure Federal, State, local and private funding and initiate design of these projects. The Lead Partners have been successful in obtaining an authorization of \$ 35 million towards the state share for these projects on the approved State Capital Budget. In April, 2004 Governor Rendell announced \$ 6 million in State Redevelopment Capital Assistance Funding for the conference center component. The Lycoming County Commissioners and City of Williamsport have each budgeted \$ 350,000 to advance the CBD Revitalization Vision during CY 2005. The Commissioners also met with our Congressional delegation in February 2004 in an attempt to secure the required federal shares. Unfortunately, federal funding approvals have been delayed due to lack of Congressional passage of the TEA-21 reauthorization legislation; however some federal appropriations have been approved for the Trade and Transit Center Expansion and Church Street Transportation Center and Market Street Bridge context sensitive design elements.

Request for Proposals were also issued in 2004 for design of the Trade and Transit Center and the Conference Center / Church Street Transportation Center Projects. Negotiations are underway with the West Third Street Partners to finalize a design / build contract for the Trade and Transit Center and L Robert Kimball & Associates for design of the Conference Center / Church Street Transportation Center. It is anticipated both projects will be under design in 2005 with possible construction starting in 2006. The Market Street Bridge project should be completed in Fall, 2007.



### **Susquehanna Greenway Development**

Considerable progress was made in 2004 to develop a regional greenway system along the Susquehanna Greenway Corridor. First, the Susquehanna Greenway Partnership continued development of a PA DCNR funded feasibility study of developing a 500 + mile greenway system along the Susquehanna River corridor throughout Pennsylvania. The LCPC Executive Director serves on the Greenway Partnership Planning Team and chairs the Partnership. With regard to the portion of the greenway in Lycoming County, the Lycoming County Commissioners were successful in obtaining approximately \$1 million from PA DCNR and PENNDOT to design and construct the Susquehanna Riverwalk connecting the Loyalsock bikeway with Maynard Street Bridge and new Market Street Bridge using the Williamsport dike-levee system on the Williamsport and South Williamsport sides of the Susquehanna River. In 2004, Larson Design Group began preliminary design with construction scheduled for 2006. When completed, this Riverwalk will tie directly to the Downtown Vision initiatives and will provide an outstanding riverfront recreation experience. The Susquehanna Greenway will eventually tie into the 62-mile Pine Creek Rail Trail between Jersey Shore and Wellsboro Junction. The Phase 3 section between Waterville and the US 220 railroad bridge over US 220 near Jersey Shore was completed in 2003. The trailhead facility with parking in Jersey Shore Borough may be completed by PA DCNR in 2005. The Lycoming County Commissioners secured a \$ 200,000 Congressional earmark for PA DCNR to paint the Pine Creek Rail Trail Bridge over US 220. This project should also be completed in 2005.

### **Other WATS Activities**

- LCPC staff, in partnership with PENNDOT and the Williamsport Bureau of Transportation, jointly developed the FFY 2005-2008 Transportation Improvement Program that has received federal approval. This program contains numerous highway, bridge and transit capital projects approved for \$165 million in Federal, State and local funds.
- LCPC Staff worked with PENNDOT and their consultant Orth Rogers and SEDA-COG to develop a computerized travel demand model that includes all of Lycoming County and seven additional counties in the SEDA-COG region. This model will provide the LCPC with improved transportation planning capabilities to evaluate the need for system-wide transportation network improvements. The Phase 1 existing conditions model is completed and fully calibrated. The Phase 2 future conditions (year 2030) model will be completed in 2006 pending funding availability through PENNDOT.
- In 2004, the LCPC initiated development of a Scenic Byways Program as part of the Lycoming County Comprehensive Plan Update process. The LCPC is developing criteria for identification, evaluation and designation of scenic byways corridors in Lycoming County, including federal, state and county byway designations. This process will be used by PENNDOT as a guide for

## 2004 LCPC/EDPS ANNUAL REPORT

development of an expanded scenic byways initiative for the Commonwealth. The study will be completed by February 2005 using Gannett Fleming as the consultant.

- LCPC Staff prepared funding recommendations to the WATS MPO on the new PENNDOT Hometown Streets / Safe Routes to Schools Program. The City of Williamsport and Hughesville Borough streetscape projects received a total of nearly \$ 1.5 million from this program in 2004. A new funding round will occur sometime in 2005.
- In addition to I-99 and the Market Street Bridge, LCPC Staff provided technical assistance necessary to advance key transportation projects funded on the WATS Transportation Improvement Program, including but not limited to, the Airport Access Road / Loyalsock Creek Railroad Bridge/ Montoursville Dike, US 15 Steam Valley Mountain highway realignment, PA 405 Muncy Creek Bridge and the PA 414 Jersey Mills Bridge.
- LCPC Staff participated on a PENNDOT Regional Advisory Panel overseeing the development of a District 3-0 regional architecture for future development of Intelligent Transportation Systems technologies and projects.
- Due to transit funding shortfalls, an evaluation to further extend transit service to Jersey Shore was deferred in 2004. It is hoped this evaluation can be undertaken in 2005 through the Welfare to Work Transportation Program initiative. For more information on City Bus routes, schedules and services visit their website at [www.citybus.org](http://www.citybus.org).
- In November, 2004, commercial air service was terminated by US Airways between Williamsport and Pittsburgh. However, expanded service was provided to the Philadelphia International Airport. Overall enplanements at the airport are gradually increasing since the 9/11/01 terrorist attacks. The LCPC Transportation Planner continues to serve as a member of the Governor's Pennsylvania Aviation Advisory Committee and was elected Chairman of the Williamsport Municipal Airport Authority. In 2005, the Airport Authority will develop a updated mission statement, goals and objectives and set a course for the overall direction of airport operations for future years in response to the many formidable challenges of posed by the airline industry. In October, 2004 the US Army Corps of Engineers announced their intent to conduct a flood protection feasibility study for the airport. It is anticipated the study will begin by mid-2005. For more information on airport flight schedules and other services, visit their website at [www.flyipt.com](http://www.flyipt.com).
- During 2003, the LCPC Planning Technician / Analyst successfully completed the Highway Performance Monitoring System traffic count data collection and inventory requirements. Approximately 100 traffic counts were compiled and entered into the PENNDOT Roadway Management System and Lyco-GIS databases in support of the WATS transportation planning program. Based upon a recent PENNDOT HPMS Program audit, the Lycoming County Planning Commission had the highest data collection accuracy rate (99.8%) among PENNDOT Engineering Districts and Metropolitan and Rural Planning Agencies in PA.



## 2004 LCPC/EDPS ANNUAL REPORT

- LCPC staff developed the WATS Unified Planning Work Program describing all transportation planning activities undertaken in 2004 and completed all reporting requirements.
- The Lycoming County Planning Commission and Williamsport MPO co-hosted the 2004 Planning Partners Conference held in Williamsport on October 17-20. Tours of area multi-modal transportation facilities and projects were provided and presentations were made on major county planning initiatives. LCPC Staff and PENNDOT received very positive feedback from conference attendees.
- LCPC staff continued active involvement with other state level, regional and local organizations in coordinating key transportation issues by serving on the Williamsport-Lycoming Chamber of Commerce Transportation Committee, SEDA-COG Regional Transportation Planning + Freight Advisory Committees, PENNDOT Financial Guidance Work Group, Transportation Enhancement Work Group, Modal Integration Work Group, Public Transportation Plan Steering Committee, Our Towns 2010, Route 15 Coalition, Appalachian Thruway Association, WBT ADA , Susquehanna Health Systems and STEP Welfare to Work Transportation Committees.

### **COUNTY LIQUID FUELS PROGRAM**

LCPC staff provided considerable assistance to the Lycoming County Commissioners in 2004 to administer County Liquid Fuels funded projects. Program highlights include

- Construction was completed in August 2004 to replace the County-owned bridge over Zimmerman Creek in the Village of Texas, Pine Township. The County Commissioners awarded the construction contract to Nestlerode Contractors of Lock Haven in the amount of their low bid of approximately \$ 712,000. In September, 2004 the aftermath of Hurricane Ivan caused Zimmerman Creek to shift course threatening the new county bridge and an adjacent Township road causing over \$ 100,000 in total damages. FEMA Public Assistance Funding has been approved to slightly re-align and stabilize the creek to prevent further damage to the bridge and roadway from future possible flooding in this area. This project will be undertaken in April, 2005.
- LCPC staff continued to administer the County Bridge Inspection Program. In 2004, county-owned and municipality owned bridges (20 feet or greater in length) that have weight limit postings or other critical structural deficiencies received a bridge inspection as required by Federal law. Inspection reports were issued to bridge owners. Results of these inspections are used by LCPC staff to assess bridge priorities for funding purposes to ensure public safety and unrestricted goods movement important to economic development in Lycoming County. Larson Design Group, County Engineer, performs the actual bridge inspections. In 2005, all 102 County and locally owned bridges will receive an inspection. Also in 2004, the County performed emergency inspections of all 102 bridges under this program to identify damages

## 2004 LCPC/EDPS ANNUAL REPORT

from Hurricane Ivan. Approximately 30 bridges received damages totaling nearly \$ 500,000 in damages which were reported to FEMA.

- In 2004, the Lycoming County Commissioners shared approximately \$ 150,000 in County Liquid Fuels funds with local municipalities to undertake municipal road and bridge improvement projects using a formula that averages each municipality's population and road mileage. Another \$ 150,000 was made available to municipalities under the County Liquid Fuels Grant Program.

### **COUNTY SUBDIVISION & LAND DEVELOPMENT ORDINANCE ADMINISTRATION**

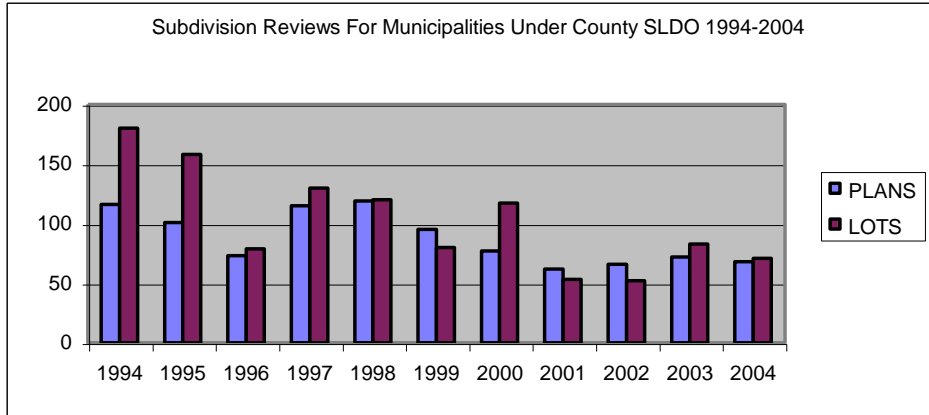
The Lycoming County Subdivision and Land Development Ordinance (SLDO) was enacted on December 26, 1972 and last updated in 1989. One of the principal functions of the Lycoming County Planning Commission, as delegated by the Lycoming County Commissioners, is to review and take official action on subdivision and land development applications for those municipalities under jurisdiction of the County SLDO. The purpose of the County SLDO is to provide for the harmonious development of the municipality and County by ensuring that proposed developments meet the standards of the Ordinance for the protection of the public health, safety, and welfare. Examples of standards include stormwater management, traffic safety, road construction standards, erosion and sediment control, sewage disposal, and adequate water supply.

The Planning Commission also recommends periodic updates to the Ordinance. Staff completed a draft comprehensive update of the County Subdivision and Land Development Ordinance. The review by the LCPC began in 2002 and continues into 2005.

The County provides full-time, professional administration and legal support for the Ordinance. This service is currently being utilized by 23 municipalities as shown by Annex 1 at the end of this report. Following is a summary of subdivision and land development activities in 2004:

- Accepted 83 new applications (plus 12 submissions were carried over from 2003). Processed and granted final approval for 64 subdivisions and 4-land development plans. Four plans were submitted for re-approval. One Subdivision was withdrawn. No subdivision plan was denied. Subdivision Plan approvals increased by 7 from 2003. Land development plan approvals decreased by 2 from 2003; there were 2 institutional and 1 business related land developments and 1 additional Principal Residence on one-lot proposal approved. The Graph below depicts the subdivision approval trends over the last ten years.

# 2004 LCPC/EDPS ANNUAL REPORT



## 2004 LCPC/EDPS ANNUAL REPORT

A total of 71 new lots were created within the municipalities under jurisdiction of the County SLDO, a decrease of 12 from 2003. See the following chart "LCPC Final Subdivision Approvals and Sewage Determination, 2004" for more detailed information.

<b>LCPC Subdivision And Sewage Disposal Report 2004</b>														
MUNICIPALITY	TOTAL # OF PLANS	SINGLE & ADD LOT PLANS	MULTI-LOT PLANS	RE-APPROVAL	NEW LOTS	ADD LOTS	SEW AGE DISPOSAL METHOD FOR NEW LOTS							
							W AIVER	STD TR	ESM*	EXIST	MUNI. OR STP	NFD	HT	SI
Anthony	3	3	0	1	2	3	0	2	0	0	0	0	0	0
Brown	2	2	0	0	0	3	0	0	0	0	0	0	0	0
Cogan House	5	4	1	1	4	2	0	2	1	1	0	0	0	0
Cummings	0	0	0	0	0	0	0	0	0	0	0	0	0	0
Gamble	7	7	0	0	5	3	0	2	3	0	0	0	0	0
Jackson	2	2	0	0	1	2	0	0	0	1	0	0	0	0
Jordan	7	5	2	0	10	0	3	0	6	1	0	0	0	0
Limestone	5	5	0	0	3	3	0	0	1	1	0	1	0	0
McHenry	2	2	0	0	1	2	0	0	0	1	0	0	0	0
McIntyre	0	0	0	0	0	0	0	0	0	0	0	0	0	0
McNett	1	1	0	0	1	1	0	0	0	1	0	0	0	0
Mifflin	3	3	0	0	3	1	1	0	1	1	0	0	0	0
Mill Creek	2	2	0	0	3	0	0	1	1	1	0	0	0	0
Moreland	4	4	0	0	3	1	0	0	1	2	0	0	0	0
Muncy	7	5	2	0	14	3	0	0	11	1	2	0	1	0
Penn	5	4	1	0	7	0	0	3	2	2	0	0	0	0
Platt	4	4	0	0	3	2	0	0	2	1	0	0	0	0
Pine	2	1	0	1	1	0	1	0	0	0	0	0	0	0
Shrewsbury	1	1	0	0	12	0	1	0	1	0	0	0	0	0
Watson	4	3	1	0	7	2	0	1	5	1	0	0	0	0
Hughesville	2	2	0	0	2	2	0	0	0	0	2	0	0	0
Picture Rocks	0	0	0	0	0	0	0	0	0	0	0	0	0	0
Salladasburg	0	0	0	0	0	0	0	0	0	0	0	0	0	0
<b>TOTAL</b>	<b>68</b>	<b>60</b>	<b>7</b>	<b>3</b>	<b>71</b>	<b>30</b>	<b>6</b>	<b>11</b>	<b>35</b>	<b>15</b>	<b>4</b>	<b>1</b>	<b>0</b>	<b>0</b>

- \* ESM - Elevated Sand Mound
- \* STD TR - Standard Trench
- \* WAIVER - Waiver From Sew age Planning "Form B"
- \* EXIST - Existing System
- \* MUNI - Municipal System or Sew age Treatment Plant
- \* NFD - Not For Development
- \* HT - Holding Tank
- \* SI - Spray Irrigation

## 2004 LCPC/EDPS ANNUAL REPORT

Land Development Plans were approved for the following:

<u>Municipality</u>	<u>Applicant</u>	<u>Use/Size (square feet)</u>
Hughesville	East Lyc. School District	School Addition/ 5,813 sq.ft.
Hughesville	Hughesv. Volun. Fire Co.	Fire House Addition/ 9,120 sq.ft.
Mifflin	Steven Flook	2nd Principal Residence/ 1,906 sq.ft.
Muncy	Blaise Alexander	Nissan Auto Dealership/ 21,256 sq.ft.



Great Escape Theatre, Muncy Township

### **COUNTY ZONING ORDINANCE ADMINISTRATION**

The County/Municipal Zoning Partnership was started on December 31, 1991 with preparation of the Lycoming County Zoning Ordinance following numerous meetings with municipal officials, the development community, and other interested parties. The County provides full-time professional zoning administration and legal support at an overall cost savings to the Partner Municipalities. Municipalities provide nominees that the County Commissioners consider for appointment to the County Zoning Hearing Board. The Board is involved with all actions beyond routine Zoning Administrator review such as variances, appeals, special exceptions and zoning amendments.

The County Zoning Ordinance, adopted in 1992, originally applied to 12 townships. Since that time, two additional Townships and Salladasburg Borough have joined the Partnership, bringing the total number of Municipalities to 15. Of the 15 Municipalities, six rescinded their individual floodplain ordinances and have come under the Floodplain regulations contained within the County Zoning Ordinance. Responsibility for administering the flood plain regulations for those six townships now falls on the County. Additionally, as a result of the Federal Emergency Management Agency's requirement for every municipality to update their flood plain regulations, five additional townships and Salladasburg Borough are actively petitioning the County to assume their floodplain regulation responsibilities.

## 2004 LCPC/EDPS ANNUAL REPORT

The following report summarizes County Zoning Activity in 2004, including County Zoning Hearing Board cases.

### 2004 Lycoming County Zoning Activity Summary:

There were 419 Zoning / Development Permits approved for a total of 728,835 square feet with an estimated value of \$17,246,838.00. Included in this permit activity were 19 logging, 14 temporary, 7 sign, and 3 change of use permits. Two permits submitted were withdrawn. Compared to the previous year, the permit activity represents a 32.5% increase in numbers of permits issued and a 55% increase in value. It is theorized that the increase is due to favorable interest rates and that some applicants sought to obtain permits before the Pennsylvania Uniform Construction Code took effect in July, 2004.

There were 42 Certificates of Compliance or Occupancy issued. This number is higher than the previous year because of increased permit activity and delayed completion of 2003 projects due to inclement weather conditions.

There were 43 land development/subdivision applications coordinated with County Zoning.

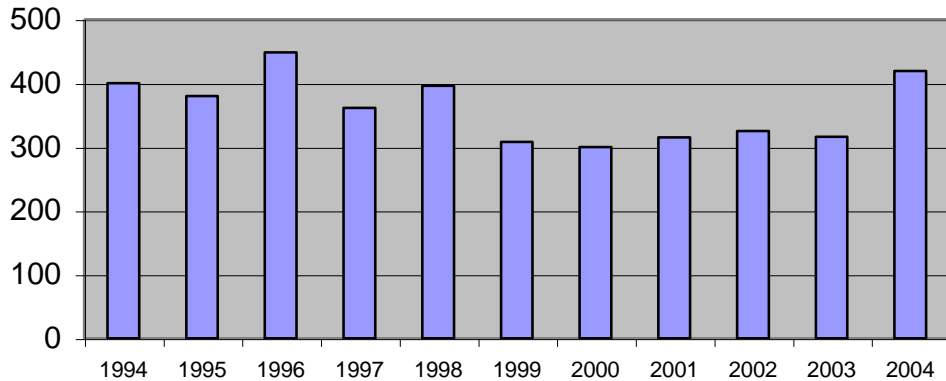
Ten applications requiring Zoning Hearing Board action were processed and all went before the board for determination. There were two Appeals, six Special Exceptions, one Variance, and one request for expansion of a non-conforming use.

There were 10 violations and complaints investigated such as accumulated junk and debris, construction without a permit, and occupancy without certificate. Enforcement actions are ongoing.

<b>Use</b>	<b>New Construction</b>	<b>Building Additions</b>	<b>Accessory Structures</b>	<b>2004 Total</b>
Single-Family Residence	94	56	190	340
Multi-Family	1	0	0	1
Commercial	6	1	4	11
Home Business	3	2	0	5
Agriculture	1	0	14	15
Institutional	0	1	0	1
Industrial	0	1	0	1

## 2004 LCPC/EDPS ANNUAL REPORT

### Permits



**Municipal assistance** was provided on an as-needed basis. The Zoning Administrator assisted in resolving questions concerning the administration of the zoning program. In addition, assistance was provided to several non-partner Townships with reviews of their individual ordinances.

**Continued support** to the Lycoming County Zoning Hearing Board involved staff duties for required public notices and set-up for the public hearings and submission of professional recommendations where appropriate. An annual review of the previously approved family care units was made to assure continued compliance with the conditions of approval by the Board.

**Floodplain management** reviews were completed in the five townships that continue to utilize County Zoning floodplain regulations. There were eight sites reviewed for compliance with floodplain regulations. Services were provided to property owners throughout Lycoming County concerning floodplain mapping interpretation and regulations.

**Administrative actions** for the fiscal management of the County Zoning functions consisted of responsibility for the operating revenues and expenditures, purchasing, and maintaining the fixed assets inventory. County Zoning budget development included preparation of the 2004 capital budget.

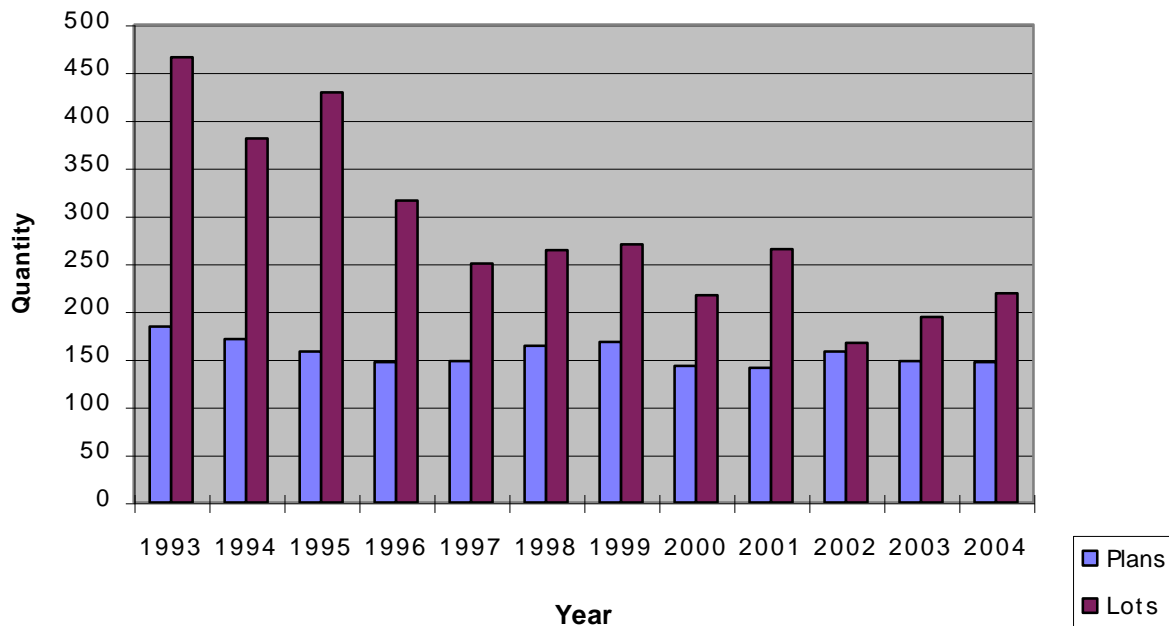
### **COMMUNITY DEVELOPMENT ASSISTANCE**

- Provided advisory review comments for 147 subdivision and land development plans, including 37 land developments under local ordinance jurisdiction. This compares to 148 subdivisions, including 29 land developments in 2003. During 2004, the total number of plans reviewed was about the same as last year. The land developments occurred within the City of Williamsport (10,) Loyalsock (8,) South Williamsport (3,) Jersey Shore Borough (4,) Clinton (4,) Muncy Creek (6,) and Hepburn (2,) Fairfield, Brady Townships; S. Williamsport Borough (1 each.) The total number of lots reviewed throughout the year increased from 194 in 2003 to

## 2004 LCPC/EDPS ANNUAL REPORT

219 in 2004. Some of these lots were for non-residential uses. Subdivisions during the year involved 60 single lots and 30 addition-lots, 17 residential multi-lot plans totaling 124 lots [increase of 30 from last year], and 3 land developments included 99 attached/semi-attached dwellings. Of the 37 land development plans there were 7 for quasi-public/public buildings of municipal, educational, or hospital.

### Subdivision & Land Development Reviews



- Provided general zoning, subdivision, and floodplain assistance on a daily basis to municipal officials, property owners, real estate professionals, bankers, insurance representatives, attorneys, surveyors, engineers, interested citizens, and the general public.
- In accordance with the State Planning Code (Act 247), we provided review comments for 44 proposed municipal Zoning Ordinance amendments during 2004. 20 were ordinance amendments in accordance with the new FEMA Floodplain Mapping Update, with an adoption deadline of March 16, 2004 imposed by the federal rules.
- The drafting and GIS staff provided mapping support to facilitate flood mitigation planning, water and sewer planning, municipal planning assistance contracts, zoning map changes and printing for individual municipalities.

### HAZARD MITIGATION



## 2004 LCPC/EDPS ANNUAL REPORT

### **Flood Mitigation Assistance Program (FMAP):**

Lower Lycoming Flood Hazard Reduction Acquisition Project has been successfully closed. The project is compliant from a regulatory and from a fiscal standpoint. A total of ten flood prone Old Lycoming Township properties were acquired and dedicated to open space for perpetuity through this project

In Lycoming County, a total of 143 properties have been acquired and 167 families have been removed from harm's way through the Hazard Mitigation Grant Program and Flood Mitigation Assistance Program.

### **Digital Flood Insurance Rate Maps (DFIRM) Adoption:**

The new DFIRMs were adopted by all 52 municipalities as of 3/16/04. LCPC staff coordinated with DCED to assist local municipalities to adopt floodplain management ordinances compliant with State and Federal law prior to the March 16, 2004 deadline. The County of Lycoming Floodplain ordinance was also updated to adopt the new maps to be fully compliant with the NFIP.

Assistance was given to McNett Township to successfully complete a Letter of Map Revision to clean up some residual problems with the DFIRM. Revisions are pending in Salladasburg Borough and Limestone Township.

### **Automated Telephone Notification System:**

The Director of Public Safety and the Community Development and Hazard Mitigation Planner met with Lycoming County Information Services staff in order to explore the possibility of bringing this system under County operation. IS has approached the Director of Public Safety to purchase technical equipment in order to further the development of this project.

### **Montoursville Flood Protection Project:**

In 2004, the US Army Corps of Engineers continued development of the feasibility study. Most of the survey and mapping work has now been completed. Work is progressing now to compile interior drainage system data among the Lyco-GIS staff and Borough crews. The ACE has also developed some preliminary levee alignment options for detailed study and is coordinating regularly with PENNDOT to integrate the levee project with the Airport Access Road and Loyalsock Creek Railroad Bridge replacement projects. LCPC intern Mary Kohler also gathered extensive data on affected properties for use in the economic study task. A stakeholder group meets bi-monthly to review study progress. The study is anticipated to be completed by December 31, 2005. Project construction cost estimates have not been developed at this time, however cost estimates along with a benefit-cost analysis will be included in the completed study in order to determine whether the ACE, County and Borough will proceed with levee final design and construction phases. If the benefits exceed costs and the project moves forward, it is anticipated that construction can begin in 2008 and tie to the PENNDOT 2008 construction schedule for the airport access road and railroad bridge.

### **County Hazard Mitigation Plan:**

## 2004 LCPC/EDPS ANNUAL REPORT

The County Hazard Mitigation Plan was developed through coordination and input from numerous local stakeholders. The draft that was developed by Delta Development Group and Yesteryears' Starlight, Inc. Consulting Services was reviewed with staff from EDPS, DPS, Soil Conservation, DEP, PEMA, etc. This revised draft was then forwarded to all 52 municipalities for input. The final draft was adopted by resolutions by the County Commissioners and all 52 municipalities and forwarded to FEMA through PEMA. Formal final approval by FEMA is outstanding. However the draft met PEMA's informal compliance review. As part of the Comprehensive Plan process, the Hazard Plan was reopened for public comment. Comments received in this process will be incorporated before the Plan is presented for adoption as part of the Comprehensive Plan.

### **Ivan Disaster Support:**

EDPS staff supported DPS during and after the Ivan Tropical Storm Flooding Disaster of September 17 and 18, 2004. Staff assisted as field coordinators to seek the Presidential declaration that made local municipalities eligible for Federal Public Assistance Funds.

Efforts have been initiated to begin the application process for Hazard Mitigation Grant Program funds for further local acquisition and demolition programs. The application period officially opens on 1/1/05.

### **Municipal and Public Assistance:**

The Mitigation planner assisted multiple municipalities and property owners with floodplain management, coordinating DEP, DCED, FEMA and municipal officials toward resolution of regulatory matters, and educating the public concerning floodplain management.

## **GEOGRAPHIC INFORMATION SYSTEMS**

### **Land Records Cartography**

Rich Murphy continued with the usual deed and boundary processing. Due to the Fair Tax Review there was also additional work from the assessment office and from citizens asking for review and consultation. Rich Murphy served on the Uniform Parcel Identifier evaluation committee, then designed the UPI process flow, and trained the new Land Records Database Coordinator (Nathan Bordy) and his backups (Judd Bower and Lynn Cunningham). Rich continues to assist with the UPI assignments and also provides backup service.

### **Uniform Parcel Identification (UPI) Program**

Nathan Bordy returned to EDPS as a permanent employee after working with us as a temp on the Recreation Plan Survey and subsequent analysis and presentations. He helped the assessment office with its first ever GIS-based Fair-Tax Review.

Adding our UPI to all deeds began January 1. This puts parcel numbers on all property instruments (deeds, mortgages, & etc) before going to the Register & Recorder. This has already been a great help in database quality improvement and later will assist in record tracking and retrieval.

Nathan Bordy wrote a database application to track and report all UPI requests for ongoing analysis of procedures. This will result in efficiency and customer service improvements.

### **GeoPlan GIS Deployment:**

The GIS division is working directly with the software creator RPT, Inc to upgrade our capabilities and improve our services to County offices and our municipal partners. We are supporting and training County Zoning and municipal staff to track permits, return a digital report of permits to the County assessment office, generate activity reports, print automatic notices and other letters to citizens. Some municipalities have also been using the streets and signs module and the sewer module to assist in infrastructure management. Staff have helped other municipalities to begin using the request for services module and the job schedule and tracking module.

Judd Bower and Mark Bletz distributed and installed two semi-annual updates of GIS data at each of the 20 remote sites. GeoPlan software and GIS data, was distributed to seven new municipalities or agencies in addition to the twelve municipalities that already have GeoPlan installed. Eldred, Wolf, Woodward, Porter, Plunketts Creek, Muncy Borough, and Montoursville Area School District are new members of the Lycoming County GeoPlan family. Staff continues to provide comprehensive services to each municipality to help them develop techniques and procedures to improve their capabilities and efficiency. All 20 municipalities have expressed appreciation for our assistance and for the use of County GIS data and technology.

## 2004 LCPC/EDPS ANNUAL REPORT

### Municipalities/Authorities Using GeoPlan

City Bus	Muncy Boro.
City of Williamsport	Muncy Creek Twp.
Clinton Twp.	Old Lycoming Twp.
Eldred Twp.	Picture Rocks Boro.
Jersey Shore Boro.	Plunketts Creek Twp.
Loyalsock Twp.	Porter Twp.
Mifflin Twp.	South Williamsport Boro
Montgomery Boro.	Williamsport Sanitary Auth.
Montoursville Boro.	Wolf Twp.
Montoursville School District	Woodward Twp.

+ INSERT obtaining Scan of Adrian Newspaper interview praising EDPS – GIS .

#### **Comprehensive Plan Mapping:**

Hannah Ingram worked with all the planners to assist them with the analysis and to produce the maps needed to help them get good discussions and present and publish the final results. Mark Bletz has been continually updating the [www.lyco.org](http://www.lyco.org) county web site with updated plans for review and adoption.

#### **Combined Sewer Overflow:**

Field mapping of manholes and drains ended in Williamsport, Duboistown, South Williamsport, Old Lycoming Township and Loyalsock Township. The connection of these features with pipelines on the map for the stormwater and the sanitary systems was finished in the office by staff. Our field crew developed techniques not published in GPS circles for getting reliable results from GPS. The municipal partners will continue their review and field update of the results. We have begun to develop post-grant maintenance agreements.

#### **Hazard Mitigation:**

GIS staff responded to Hurricane Ivan flooding and provided data, field maps, and field crews. The public use terminal, software, and data for citizen review of their own properties were supported.

## 2004 LCPC/EDPS ANNUAL REPORT



Black Highland Steer surviving Ivan Flood in the Loyalsock Creek

### **Tax Assessment:**

Nathan Bordy, Mark Bletz, and Judd Bower provided assistance for the Fair Tax Review which used GIS as a major key to help provide less subjective valuations. Clean and Green data was calculated using a program written by Judd Bower.

Judd Bower developed a new way to help the assessment office by comparing various files and identifying possible inconsistencies in parcel mapping and other databases. This was very successful in the area where it was applied and will be expanded to cover the remaining part of the county.

### **Support for EDPS**

GIS supported all other EDPS staff with daily computer assistance and for the following projects: County and area Comprehensive Plans, County Recreation Parks and Open Space/Greenway Plan, Pine Creek Conservation Plan, Hazard Mitigation, LOMA assistance, Lower Lycoming Flood Data Reduction Study, Traffic Counting, Transportation Modeling, Zoning assistance, Subdivision mapping, Flood Warning System, and Montoursville Levee project.

## **ADMINISTRATION & INTERAGENCY COORDINATION**

- Had a clean audit without qualifications or management letter, and adjusted our costing rate to more quickly absorb prior years' under billings.
- The Lycoming County Planning Commission adopted a joint LCPC/EDPS FY 2004-2005 work program of \$3,010,463 of which \$1,340,909 (45%) is net County funding support. The remaining funds of \$1,669,555 are from State and Federal Government grants; development processing fees; and municipal service contracts. The FY 2004-2005 Work Program Budget

## 2004 LCPC/EDPS ANNUAL REPORT

includes \$1,864,874 for outside consultants and other direct costs (such as software and computer product acquisition).

- The 2005 budget for EDPS is \$5.7 million.
- Executive Director Jerry S. Walls received the Lycoming County Distinguished Service Award.
- Updated technological hardware and software, including digital cameras, scanner, 25% of department computers, and GIS software and equipment.

## 2004 LCPC/EDPS ANNUAL REPORT

### ACRONYMS

- CAFO – Concentrated Animal Feeding Operation
- CBD – Central Business District
- CCAP – County Commissioners Association of PA
- CP – Canadian Pacific Railroad Corporation
- CSO – Combined Sewer Overflow
- DCED – Department of Community and Economic Development
- DCNR – Department of Conservation and Natural Resources
- DEP – Department of Environmental Protection
- DFIRM – Digital Flood Insurance Rate Map
- DRI – Disaster Resistance Initiative (Lycoming County Project Impact)
- DTN – Digital Terrain Model
- EDPS – Economic Development and Planning Services
- EDA-Economic Development Administration
- EPA – Environmental Protection Agency
- FEMA – Federal Emergency Management Agency
- FMAP- Flood Mitigation Assistance Program
- GIS – Geographic Information System
- GPS – Geographic Positioning System
- HMGP – Hazard Mitigation Grant Program
- KOZ – Keystone Opportunity Zone

## 2004 LCPC/EDPS ANNUAL REPORT

LCC – Lycoming County Commissioners

LCSWA – Lycoming County Water and Sewer Authority

Lead Partners – County, City, Williamsport-Lycoming Chamber of Commerce, Lycoming Housing Finance, Inc., our Towns 2010

LHR – Lumber Heritage Region

LVRR – Lycoming Valley Railroad

NGA – National Governor’s Association

NGS CORS – National Geodetic Survey Continually Operating Reference Station

NS – Norfolk Southern Railway Corporation

PAT – Planning Advisory Team

PDM-Pre-Disaster Mitigation

PEMA – Pennsylvania Emergency Management Agency

RPT – Regional Planning Technologies

SGP – Susquehanna Greenway Partnership

US ACE – United States Army Corp of Engineers

USGS- United States Geological Survey

WSA – Williamsport Sanitary Authority

WTP – Wastewater Treatment Plant



