

2020 Project Highlight: Artley Stormwater Improvements



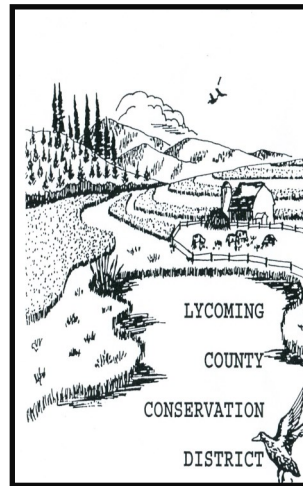
299 Feet of Rock-lined waterway

392 Feet of turf-reinforced waterway

927 Feet of Underground Outlets

Our Partners in Conservation...

USDA Farm Service Agency
USDA Natural Resources Conservation Service
Northcentral Pennsylvania Conservancy
Department of Environmental Protection
State Conservation Commission
DCNR Bureau of Forestry
Pa Department of Transportation
Pa Fish and Boat Commission
Pa Game Commission
Pa Department of Agriculture
Lycoming County Planning and Zoning
Penn State Cooperative Extension
Lycoming Co. Assoc. of Township Supervisors
Watershed Associations
Trout Unlimited



LYCOMING COUNTY CONSERVATION DISTRICT



2020 ANNUAL REPORT



DISTRICT DIRECTORS

Paul Wentzler, Chairman
William Kahler, Vice Chairman
Thomas Hamm, Director
Cameron Koons, Director
William Messersmith, Director
Joseph Radley, Director
Richard Mirabito, Commissioner/Director

ASSOCIATE DIRECTORS

Paul Kremser
Lawrence Fry
Russell Reitz

DISTRICT STAFF

Mark Davidson, District Manager (Jan.-Nov.)
Greg Bonsall, District Manager (December)
Carey Entz-Rine, Watershed Specialist
Tim Heyler, Ag Conservation Technician
Kellen Krape, District Technician
Matt Long, District Technician
Rod Morehart, Chesapeake Bay Technician
Denise Moser, Secretary/ Treasurer

Lycoming County Conservation District
542 County Farm Road, Suite 202
Montoursville, PA 17754
Phone: (570) 433-3003
Fax: (570) 329-1632
Website: www.lyco.org

November 2020 marked the end of an era at the Lycoming County Conservation District. Mark Davidson retired after providing 31 years of excellent service. Mark started at the LCCD in April 1989 and held many positions, most recently District Manager.

He was viewed as being instrumental in transforming the LCCD into an effective organization, capable of serving the local regulated community.

Davidson stepped up to the plate when other agencies felt the pinch of tough economic times, helped create the nutrient trading program, and volunteered on the Pennsylvania State Envirothon Board.

We thank you for your dedication to this organization and wish you the best in your retirement!



NUTRIENT TRADING PROGRAM

With 2020 being a more normal precipitation year than the past two years, our Nutrient Trading Program was able to sell 44% of the credits generated by our participants. By selling 9,595 of our 21,831 available nitrogen credits, we generated \$38,058.37 in sales. Our participating farmers received \$27,336.53. The Lycoming County Nutrient Trading Program's share of the total was \$10,721.84.

CHESAPEAKE BAY PROGRAM

In 2020, the Lycoming Conservation District agricultural staff completed 41 farm inspections.

NO-TILL DRILL RENTAL PROGRAM

- 323.8 acres planted in 2020
- Rental fee is \$10.00 per acre
- Delivery is available for \$1.00 per loaded mile



NUTRIENT MGMT and ACT PROGRAM

- 10 Nutrient management plans reviewed and approved in 2020, including 1 CAFO, 8 CAOs, and 1 Volunteer.
- Awarded \$292,206 Growing Greener Grant for Wolf Run Watershed: Manure Stacking Structures, Heavy Use Area Protection, Waste Storage Closure, Roof Runoff Structures, Rock-Lined Waterway, Access Road.
- Constructed diversion on County Farm to address erosion in cropland.
- Constructed stormwater practices at the Artley Farm with leftover Growing Greener 2016 Funds.



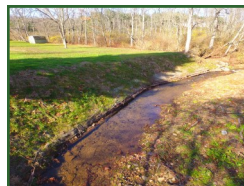
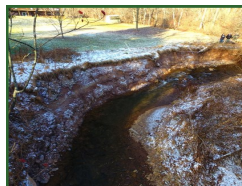
VECTOR BORNE DISEASE CONTROL PROGRAM

- The monitoring program includes trapping, identifying and treating both the mosquitos and their habitats to minimize potential related diseases.
- In the 2020, Lycoming Co. had 1 West Nile positive sample.
- Continue to participate in the spring and fall tick surveys.



WATERSHED MANAGEMENT

- Continue to assist Watershed Associations throughout the County.
- Fish Habitat Enhancement Structures were installed on Mill Creek in Hepburn Twp. Plunketts Creek, Wallis Run and Lycoming Creek.



Mill Creek, Hepburn Twp.

DIRT AND GRAVEL ROADS

In 2020, the Dirt, Gravel & Low-Volume Roads Program provided funding for 11 projects in Lycoming County totaling \$663,000. Approximately 7.09 miles of dirt and gravel roads were repaired by implementing Environmen-



Homes Hollow Penn Township

EROSION AND SEDIMENT CONTROL

Chapter 102 and 92 Delegation

- Reviewed 34 Erosion & Sediment (E&S) Control Plans
- Reviewed & approved 16 General National Pollution Discharge Elimination System (NPDES) permits.
- Reviewed 4 Individual NPDES permits.
- Reviewed & approved 1 Erosion Sediment Control General Permits (ESCGP-3).
- Performed 38 earth disturbance inspections and responded to 38 complaints.

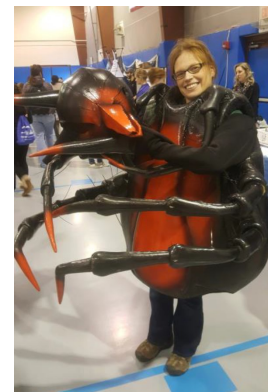
AG LAND PRESERVATION

The Agricultural Land Preservation Program continues to be very popular within Lycoming County. In 2020 we were able to complete 1 additional easement purchase. This easement preserves an additional 50 acres of County farmland. To date, the Lycoming County Ag Land Preservation Board has purchased easements on 85 farms preserving over 10,100 acres for future generations. Although easements restrict future development on the property, owners retain the right to operate, manage, and sell the property at any time. The Lycoming County Agricultural Land preservation board will have approximately \$300,000 available for the purchase of conservation easements in 2020.



EDUCATION AND OUTREACH

- LCCD provided 9 environmental education programs reaching 2,000 participants.
- Held the Conservation Buffers: Guide to Improved Livestock Health Workshop funded by the PACD CREP Mini Grant program.
- LCCD continues to partner with the PA Trout in the Classroom Program. Students raise trout from eggs to fingerlings and learn about cold-water conservation. Many of the schools released early due to the school closures.
- The Annual LCCD Environmental Education Mini Grant Program funded 6 Projects for a total of \$11,930.
 - Lycoming College CWI– Monitoring on Wolf Run
 - Loyalsock WA- Rose Valley Mill Cr. Cane Pole Derby
 - Loyalsock WA– Install canoe/ kayak launch and kiosk
 - Sylvan Dell– Enhance Wildlife Habitat Project
 - C. Sportsmen of Muncy Cr.– Faus Nursery Replacement



Penn College Science Festival, Tick-borne Disease Education